

U.S. PUBLIC LAND SURVEY MONUMENT RECORD

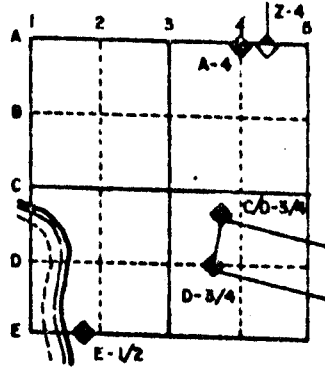
For Public Land Survey Corners in the
T. 4 N., R. 10 E.

CORNER CODE INDEX

	1	2	3	4	5	6	7	8	9	10	11	12	13	14	15	16	17	18	19	20	21	22	23	24	25
A																									
B																									
C	6																								
D		5																							
E			4																						
F				3																					
G					2																				
H																									
I																									
J																									
K																									
L																									
M																									
N																									
O																									
P																									
Q																									
R																									
S																									
T																									
U																									
V																									
W																									
X																									
Y																									
Z																									

PLACE MONUMENT SYMBOL (◆) AT PROPER LOCATION ON ABOVE INDEX

EXAMPLE



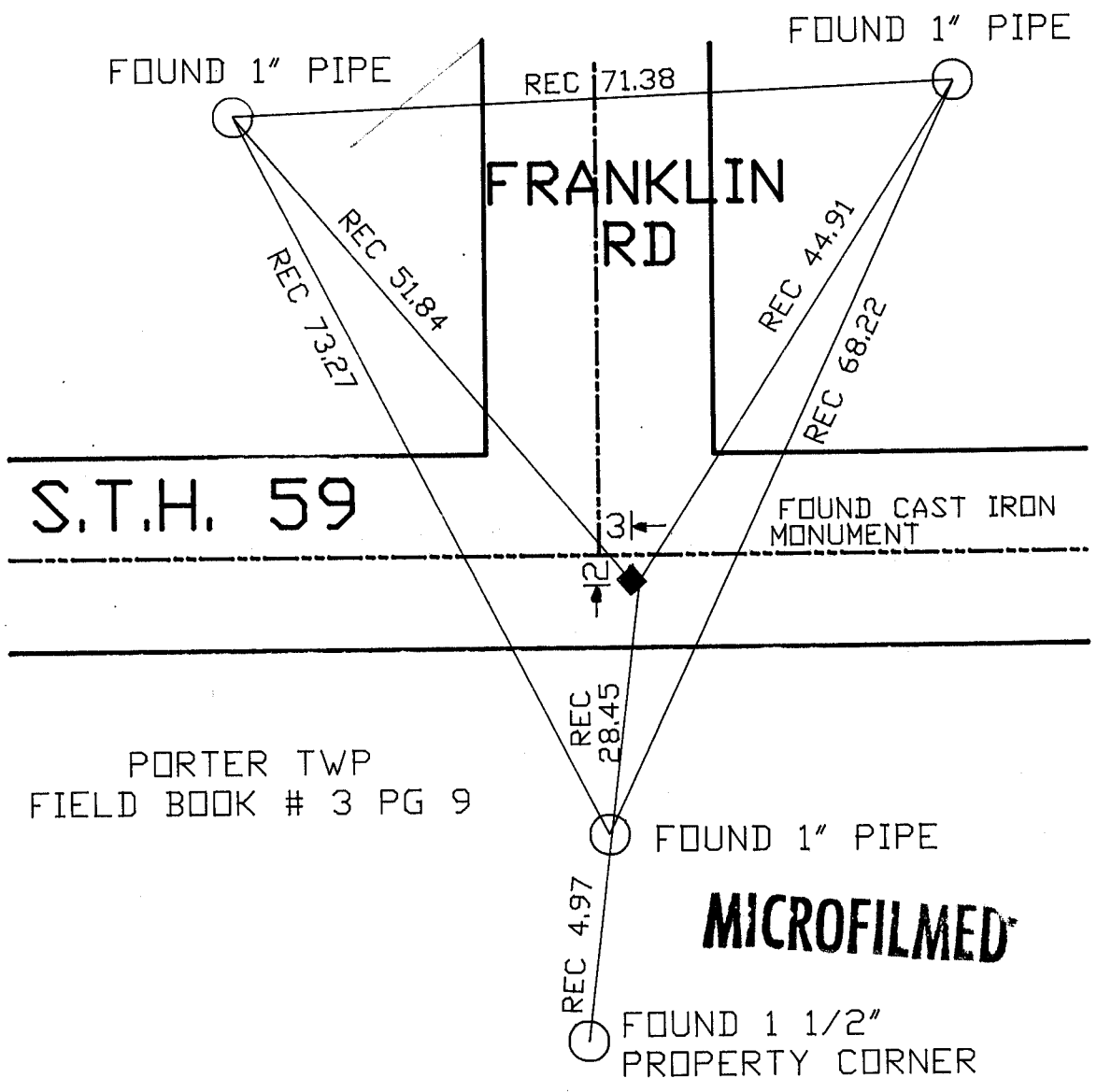
UNION TWP
ROCK COUNTY WI

IF AVAILABLE
STATE PLANE COORDINATES

North (Y) _____ Elevation (Z) _____
 East (X) _____ Zone _____
 Horizontal Datum _____ Vertical Datum _____

◆ CORNER MONUMENT ○ WITNESS MONUMENT

BEARINGS ARE BASED ON:



PORTER TWP
FIELD BOOK # 3 PG 9

MICROFILMED

SHEET ___ OF ___

CORNER CODE: E 21

(B) Describe any record evidence, monument evidence, occupational evidence, testimonial evidence or any other material evidence you considered, and whether the monument was found or placed.

- 1870 RUGER REMONUMENTATION FIELD NOTES FOUND REMAINS OF OLD STAKE AT CORNER. ALSO FOUND BEARING TREE AND REMAINS OF STUMP OF OTHER BEARING TREE.
- 1884 RUGER VOL 2 PG 387 FOUND STONE MONUMENT. SHOWS 2601.06 TO SOUTH QUARTER CORNER AND 2659.80 TO EAST QUARTER CORNER OF SECTION 2.
- 1970 BATTERMAN JR. VOL 4 PG 442 FOUND CUT LIMESTONE 1.5 DEEP. PLACED TIES.
- 1975 KERMIT WILHELM VOL 5 PG 161 FOUND COUNTY MONUMENT. SHOWS 2607.47 TO SOUTH QUARTER CORNER AND 2665.99 TO EAST QUARTER CORNER OF SECTION 2.

FOUND CAST IRON MONUMENT

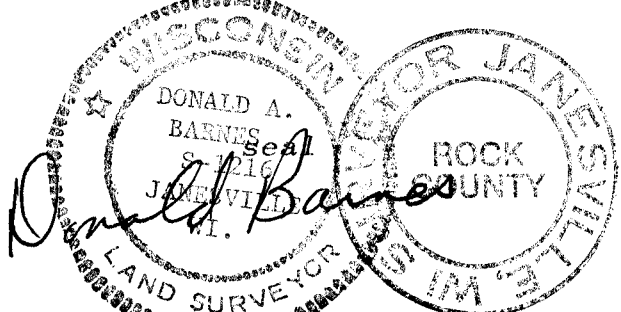
C) Was the corner restored through acceptance of (1) an obliterated evidence location, or, (2) a found perpetuated location?

ACCEPTED FOUND PERPETUATED LOCATION.

D) Describe any material discrepancy between the location of the corner as restored or reestablished and the location of that corner as previously restored or reestablished by distance and direction. Show the discrepancy on the plan view drawing under (a), above. Show the distances between the corner as previously restored or reestablished and (1) the corner as restored or reestablished, and (2) to at least 4 of the witness monuments shown on the drawing in (a), above.

(E) Was the corner reestablished through lost corner proportionate methods? If so, show the method, including the directions and distances to other public land survey corners used as evidence or used for proportioning the corner location.

I, Donald Barnes, hereby certify that the corner points as identified by the corner code index were, in a field survey on, July 22 1988, established, re-established, monumented, re-monumented, recovered or restored as expressed below and in conformance with the regulations and rules as required in the current manual of survey instructions of the United States Department of Interior, Bureau of Land Management.



COUNTY SURVEYOR FILING DATA

Date of computer entry _____

Date microfilmed _____

Number of included sheets _____
CORNER CODE

AFFIX YOUR LAND SURVEYOR SEAL