

Paper weight-110# (minimum)

Black nonfading ink required

# U.S. PUBLIC LAND SURVEY MONUMENT RECORD

For Public Land Survey Corners In:  
T. 4 N. R. 10 E. 4th P.M.  
CORNER CODE INDEX

WI ADMINISTRATIVE CODE A-E 7.08 REQUIREMENT  
REV 10/23/2004 USMONREC.DWG

UNION TWP  
ROCK COUNTY WI

IF AVAILABLE  
ROCK COUNTY COORDINATES PREFERRED

A	1	2	3	4	5	6	7	8	9	10	11	12	13	14	15	16	17	18	19	20	21	22	23	24	25	A
B		6					5					4					3				2				1	B
C																										C
D																										D
E																										E
F																										F
G																										G
H																										H
J																										J
K																										K
L																										L
M																										M
N																										N
O																										O
P																										P
Q																										Q
R																										R
S																										S
T																										T
U																										U
V																										V
W																										W
X																										X
Y																										Y
Z																										Z

North \_\_\_\_\_ Elev. \_\_\_\_\_

East \_\_\_\_\_

Hor. Datum \_\_\_\_\_ Vert. Datum \_\_\_\_\_

LATITUDE \_\_\_\_\_ ELLIPS. HT. \_\_\_\_\_

LONGITUDE \_\_\_\_\_

NAD83(91) \_\_\_\_\_ NETWORK ADJ. YR 2010

GPS (X) \_\_\_\_\_ TRAVERSE (X) X

BASED ON THE FOLLOWING CONTROL:

◆ CORNER MONUMENT

○ WITNESS MONUMENT

BEARINGS ARE BASED ON: --- ROCK COUNTY PROJECTION

FIELD BOOK \_\_\_\_\_ PAGE # \_\_\_\_\_  
OR OBSERVATION SHEET \_\_\_\_\_

SHEET 1 OF 3

SHOW A PLAN VIEW DRAWING DEPICTING THE CORNER MONUMENT AND SURROUNDING PHYSICAL FEATURES, INCLUDING THE EXCAVATION AREA AND DEPTH.

PLANNING & ZONING COMMITTEE ADOPTED THIS FORM ON 12/2/1982

CORNER CODE A-23

UN512 N1/4CORSEC1

(B) Describe any record evidence, monument evidence, occupational evidence, testimonial evidence or any other material evidence you considered, and whether the monument was found or placed.

1833 MULLETT & BRINK T5N R10E VAR 8-10E WEST ON  
SOUTH SIDE SEC 36

1320.00 RAPID STREAM PURE WATER 16.5' WIDE CRS S.E

2640.00 SET QUARTER SEC POST BURR OAK 18 N84E  
52.8'; BURR OAK 14 N48 1/2W 34.98'

3493.38 W OAK 16

5280.00 SET POST CORNER TO SECTIONS 35 & 36 BURR  
OAK 12 N86 1/2E 224.40'; WHITE OAK 18 N12W  
39.60'

LAND ROLLING SECOND RATE. BURR OAK, WHITE  
OAK, RED ROOT CRS

1870 RUGER AUG REMON-107 EAST ON NORTH LINE OF NW  
1/4 SEC 1 ON A VAR 6-40; OFFSET NORTH 3.3'  
INTERSECTED QUARTER LINE OF SECTION 36 T5  
R10 1.32' NORTH OF SOUTH QUARTER CORNER OF  
SAID SECTION. COR VAR 6-42

CONTINUED EAST ON NORTH LINE OF NE 1/4  
SEC 1 ON SAME VARIATION AS ABOVE OFFSET  
SOUTH 2.64' OFFSET SOUTH 1260.6' TO AVOID  
MILL POND. CONTINUED EAST ON SAME  
VARIATION AS ABOVE, AT

5256.24 INTERSECTED EAST BOUNDARY LINE 1260.6'  
SOUTH OF NE CORNER FOUND REMAINS OF OLD  
STAKE AT CORNER. ALSO FOUND REMAINS OF  
STUMPS OF BOTH BEARING TREES. ESTABLISHED  
NORTH QUARTER CORNER OF SECTION 1 ON  
TOWN LINE AND EQUI-DISTANT FROM NE AND  
NORTH WEST CORNER OF SAID SECTION. IT  
BEING 2628.12' DISTANT FROM EACH. THE  
NORTH QUARTER POST OF SEC 1 IS 6.27' WEST  
OF THE SOUTH QUARTER POST OF SECTION 36 T5  
R10. COR VAR 6-43

1972 WEIR CSM VOL 2 PG 270 FD CONG. MON. 5213.97 TO IRON  
STAKE @ S 1/4 COR SEC 1

1976 WEIR #5051 TIE SHEET. S 1/4 COR SEC 36. I SET ABOVE  
COR EQUA-DISTANT AND ON LINE BETWEEN THE SW COR &  
THE SE COR SEC 36. SET 1" I.P. 4' NORTH OF E/W FENCE  
LINE EXTENDED. IN EAST SIDE OF DITCH.

1990 SCHROEDER CSM 14 PG 253 STATES NOTHING ABOUT MON.

1997 GRENLIE CSM VOL 20 PG 309 STATES NOTHING ABOUT MON

SEARCHED & FD NOTHING. IT APPEARS THE DITCH WITH CONG.  
HEADWALLS DESTROYED THE MONUMENTS. POSITION IS ON LINE  
WITH E/W FENCE.

C) Was the corner restored through acceptance of (1) an obliterated evidence location, or, (2) a found  
perpetuated location? **NO** ESTABLISHED THE CORNERS ON LINE & @  
PROPORTIONATE DISTANCE.

D) Describe any material discrepancy between the location of the corner as restored or reestablished  
and the location of that corner as previously restored or reestablished by distance and direction. Show  
the discrepancy on the plan view drawing under (a), above. Show the distances between the corner as  
previously restored or reestablished and (1) the corner as restored or reestablished, and (2) to at least 4  
of the witness monuments shown on the drawing in (a), above.

(E) Was the corner reestablished through lost corner proportionate methods? If so, show the method,  
including the directions and distances to other public land survey corners used as evidence or used for  
proportioning the corner location. **YES**

I, **Donald Barnes**, hereby certify that the corner location as identified by the corner code index  
was determined by me under my direction and control and that this U.S. Public Land Survey  
Monument Record is correct and complete to the best of my knowledge and belief.

DEAL  
Barnes

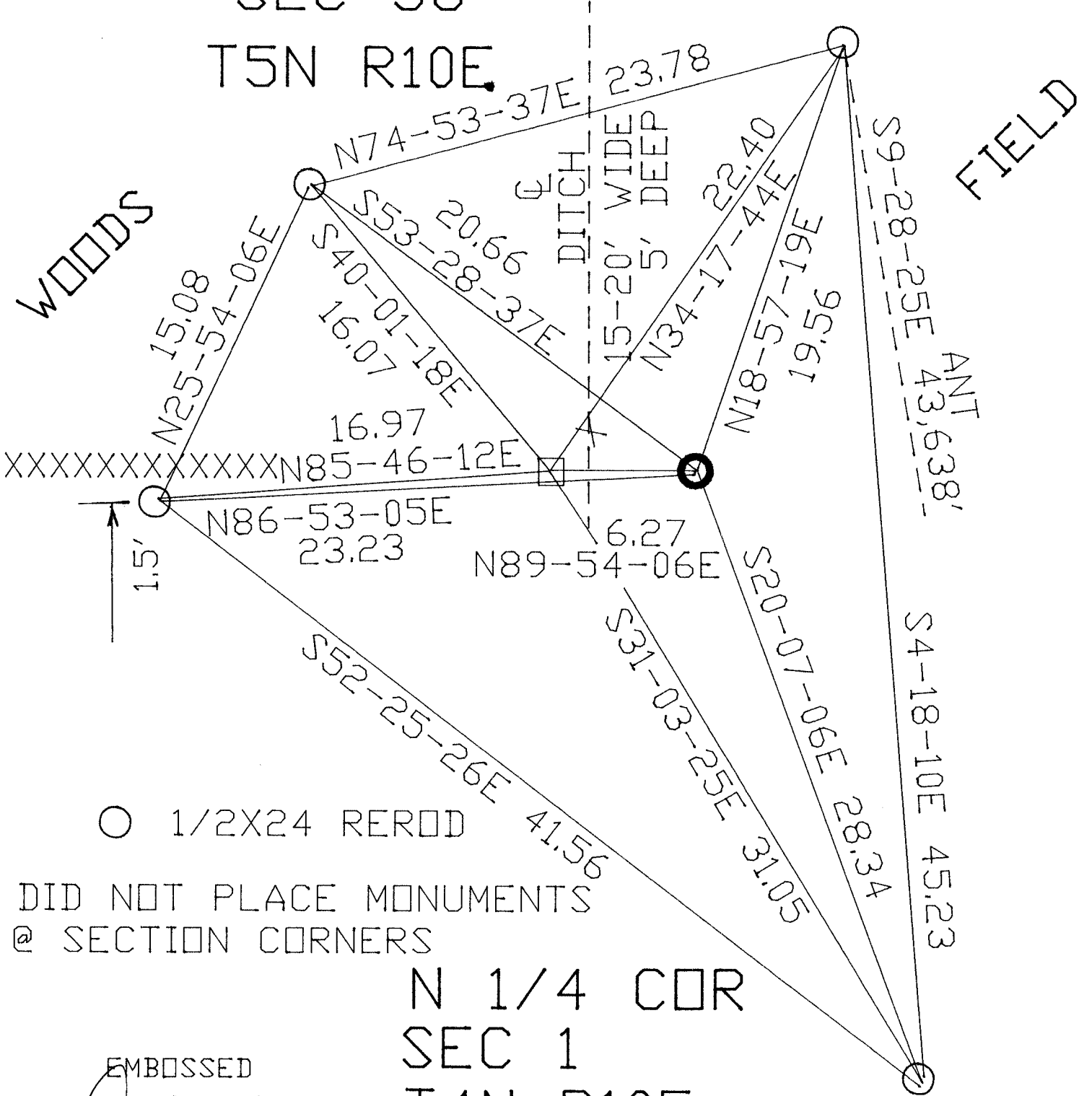
Nov 9, 2011

SHEET 1 OF 3

CORNER CODE **A-23**

A.E. 7.08 REQUIREMENT

SEC 36  
T5N R10E



N 1/4 COR  
SEC 1  
T4N R10E  
UNION TWP

SHEET 2 OF 3

A-23

EMBOSSED  
SEAL  
*Donald Barnes*

Nov 11, 2011

NW CDR 1833 HARRISON 12.54  
 1870 RUGER 12.54  
 1871 GRAVES 15.18  
 1976 WEIR 16.50  
 N89-36-39E 16.67

SW CDR

N89-54-13E 2620.08  
 1870 RUGER 2621.85  
 1833 BRINK 2640.00

N89-54-06E 6.27  
 1870 RUGER 6.27

S 1/4 CDR

SEC 36

N89-54-06E 2624.20  
 1870 RUGER 2621.85  
 1833 BRINK 2640.00

CDR

SF

1870 RUGER VAR6-42 2628.12  
 N89-54-06E 2630.48  
 S 1/4 CDR

S0-00-40E 5221.558

1972 WEIR CSM 2-270 5213.97

1870 RUGER VAR 6-43 2628.12  
 N89-54-06E 2630.48  
 NE CDR

SEC 1

EMBOSSED SEAL  
 James A-23

Nov 11, 2011