

# U.S. PUBLIC LAND SURVEY MONUMENT RECORD

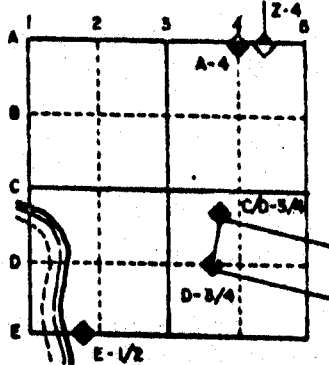
For Public Land Survey Corners in the  
T. 2 N., R. 12 E.

## CORNER CODE INDEX

	1	2	3	4	5	6	7	8	9	10	11	12	13	14	15	16	17	18	19	20	21	22	23	24	25
A																									
B																									
C	6																								
D		5																							
E			4																						
F				3																					
G					2																				
H	7																								
I		8																							
J			9																						
K				10																					
L					11																				
M						12																			
N	13																								
O		14																							
P			15																						
Q				16																					
R					17																				
S						18																			
T							19																		
U								20																	
V									21																
W										22															
X											23														
Y												24													
Z													25												
														26											
															27										
																28									
																	29								
																		30							
																			31						
																				32					
																					33				
																						34			
																							35		
																								36	

PLACE MONUMENT SYMBOL (◆) AT PROPER LOCATION ON ABOVE INDEX

### EXAMPLE



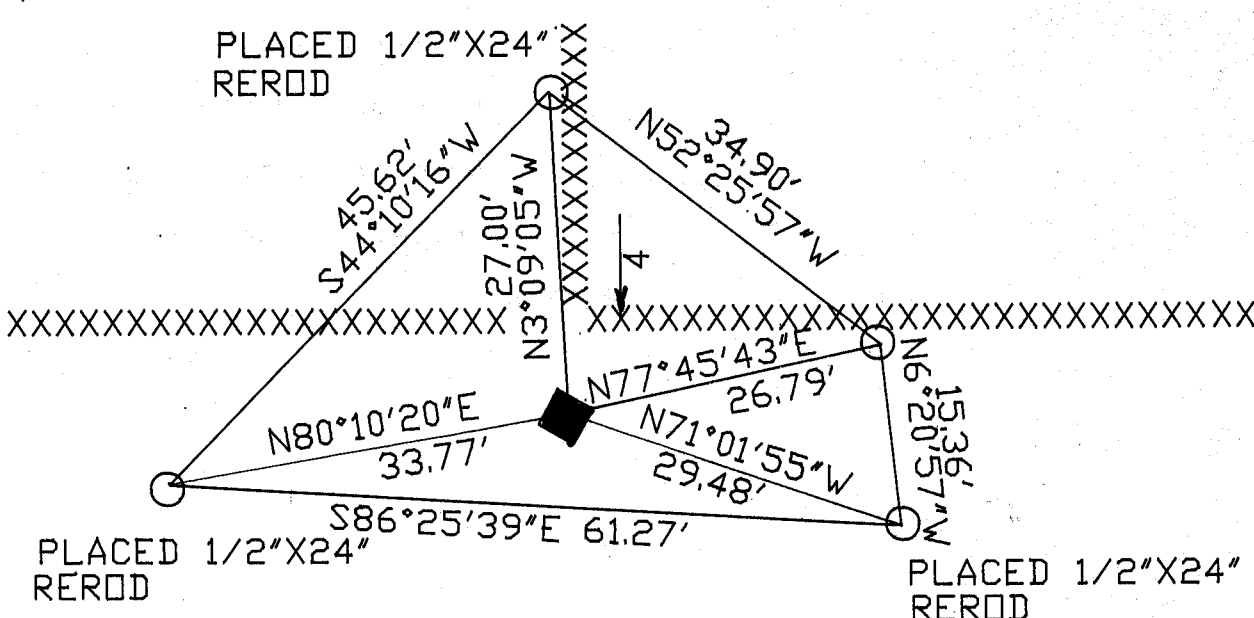
ROCK TWP  
ROCK COUNTY WI

### IF AVAILABLE STATE PLANE COORDINATES

North (Y) \_\_\_\_\_ Eleve. (Z) \_\_\_\_\_  
 East (X) \_\_\_\_\_ Zone \_\_\_\_\_  
 Hor. Datum \_\_\_\_\_ Vert. Datum \_\_\_\_\_

e.) ◆ CORNER MONUMENT ○ WITNESS MONUMENT

BEARINGS ARE BASED ON: ASSUMED



FIELD BOOK # 3 PG ~~63~~  
14

**MICROFILMED**

SHEET \_\_\_ OF \_\_\_

CORNER CODE: 27

(B) Describe any record evidence, monument evidence, occupational evidence, testimonial evidence or any other material evidence you considered, and whether the monument was found or placed.

1971 LEE VOL 4 PG 539 SHOWS 2671 TO THE SE CORNER OF SECTION 32.

1981 BARNES VOL 6 PG 143. SHOWS N89-46-05E 2652.29 TO THE SW CORNER OF SECTION 32, 173.0 TO THE N 1/4 CORNER OF SECTION 5, N89-36-32E 2669.30 TO THE SE CORNER OF SECTION 32.

1981 BARNES VOL 6 PG 167 DUG AND FOUND CORNER POST. REPLACED WITH CAST IRON MONUMENT.

FOUND CAST IRON MONUMENT.

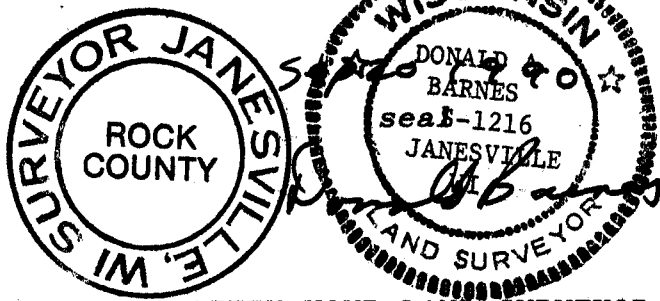
C) Was the corner restored through acceptance of (1) an obliterated evidence location, or, (2) a found perpetuated location?

ACCEPTED MONUMENT.

D) Describe any material discrepancy between the location of the corner as restored or reestablished and the location of that corner as previously restored or reestablished by distance and direction. Show the discrepancy on the plan view drawing under (a), above. Show the distances between the corner as previously restored or reestablished and (1) the corner as restored or reestablished, and (2) to at least 4 of the witness monuments shown on the drawing in (a), above.

(E) Was the corner reestablished through lost corner proportionate methods? If so, show the method, including the directions and distances to other public land survey corners used as evidence or used for proportioning the corner location.

I, Donald Barnes, hereby certify that the corner points as identified by the corner code index were, in a field survey on, July 20, 1990, established, re-established, monumented, re-monumented, recovered or restored as expressed below and in conformance with the regulations and rules as required in the current manual of survey instructions of the United States Department of Interior, Bureau of Land Management.



AFFIX YOUR LAND SURVEYOR SEAL

COUNTY SURVEYOR FILING DATA

Date of computer entry \_\_\_\_\_

Date microfilmed \_\_\_\_\_

Number of included sheets \_\_\_\_\_  
CORNER CODE

27