

# U.S. PUBLIC LAND SURVEY MONUMENT RECORD

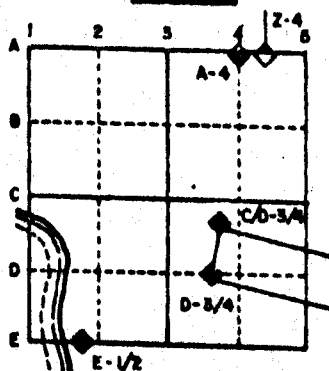
For Public Land Survey Corners in the  
T. 2 N., R. 12 E.

## CORNER CODE INDEX

	1	2	3	4	5	6	7	8	9	10	11	12	13	14	15	16	17	18	19	20	21	22	23	24	25
A																									
B																									
C	6																								
D		5																							
E			4																						
F				3																					
G					2																				
H																									
I	7																								
J		8																							
K			9																						
L				10																					
M					11																				
N						12																			
O							13																		
P								14																	
Q									15																
R										16															
S											17														
T												18													
U													19												
V														20											
W															21										
X																22									
Y																	23								
Z																		24							
																			25						
																				26					
																					27				
																						28			
																							29		
																								30	
																									31
																									32
																									33
																									34
																									35
																									36

PLACE MONUMENT SYMBOL (◆) AT PROPER LOCATION ON ABOVE INDEX

### EXAMPLE



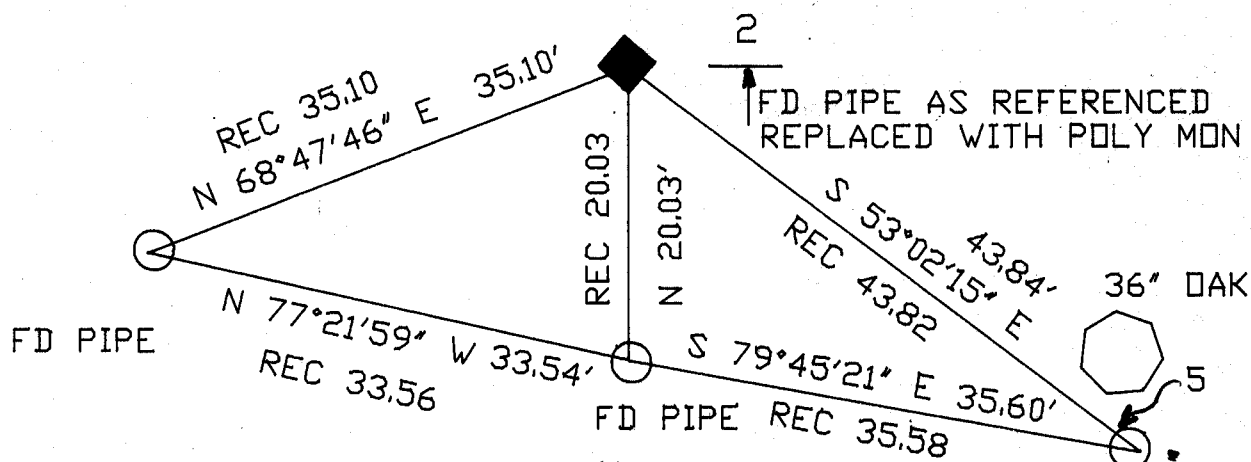
ROCK TWP  
ROCK COUNTY WI

IF AVAILABLE  
STATE PLANE COORDINATES

North (Y) \_\_\_\_\_ Eleve. (Z) \_\_\_\_\_  
 East (X) \_\_\_\_\_ Zone \_\_\_\_\_  
 Hor. Datum \_\_\_\_\_ Vert. Datum \_\_\_\_\_

◆ CORNER MONUMENT      ○ WITNESS MONUMENT

## NOSS RD



FIELD BOOK #2 PG 44,48

1/2X24" REROD

# MICROFILMED

SHEET \_\_\_ OF \_\_\_

CORNER CODE: X7

BEARINGS ARE BASED ON: ASSUMED

(B) Describe any record evidence, monument evidence, occupational evidence, testimonial evidence or any other material evidence you considered, and whether the monument was found or placed.

1855 CHURCH VOL 1 PG 30 SHOWS A BEARING TREE. BLACK OAK 8" S12 1/2 W 75 LINKS. SHOWS A DISTANCE OF 2641.32 TO W 1/4 CORNER, 2650.56 TO E 1/4 CORNER, AND 2641.32' TO N 1/4 CORNER OF SECTION 32.

1966 BATTERMAN JR. VOL 4 PG 257. SHOWS PIPE AT CORNER WITH REFERENCE TIES.

1971 LEE VOL 4 PG 539. FOUND 1" PIPE .13' NORTH OF E/W QUARTER LINE NEAR THE CENTER OF SECTION.

1981 BARNES VOL 6 PG 143 SHOWS COMBS DISTANCE OF 2662.93 TO W 1/4 CORNER OF SECTION 32.

FOUND PIPE AS PREVIOUSLY REFERENCED. REPLACED WITH POLY. MONUMENT.

(C) Was the corner restored through acceptance of (1) an obliterated evidence location, or, (2) a found perpetuated location?

ACCEPTED FOUND PERPETUATED LOCATION.

(D) Describe any material discrepancy between the location of the corner as restored or reestablished and the location of that corner as previously restored or reestablished by distance and direction. Show the discrepancy on the plan view drawing under (a), above. Show the distances between the corner as previously reestablished, and (2) to at least 4 of the witness monuments shows on the drawing in (a), above.

I, Donald Barnes, hereby certify that the corner points as identified by the corner code index were, in a field survey on, June 23, 1989, established, re-established, monumented, remonumented, recovered or restored as expressed below and in conformance with the regulations and rules as required in the current manual of survey instructions of the United States Department of Interior, Bureau of Land Management

