

U.S. PUBLIC LAND SURVEY MONUMENT RECORD

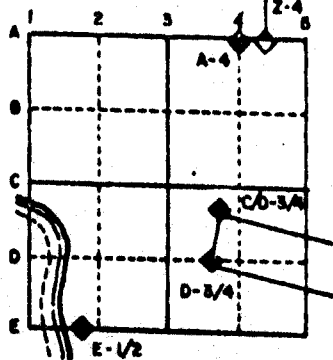
For Public Land Survey Corners in the
T. 2 N., R. 12 E.

CORNER CODE INDEX

	1	2	3	4	5	6	7	8	9	10	11	12	13	14	15	16	17	18	19	20	21	22	23	24	25
A																									
B																									
C	6																								
D		5																							
E			4																						
F				3																					
G					2																				
H																									
I																									
J	7																								
K		6																							
L			5																						
M				4																					
N					3																				
O						2																			
P							1																		
Q																									
R																									
S																									
T	30																								
U		29																							
V			28																						
W				27																					
X					26																				
Y						25																			
Z							24																		
								23																	
									22																
										21															
											20														
												19													
													18												
														17											
															16										
																15									
																	14								
																		13							
																			12						
																				11					
																					10				
																						9			
																							8		
																								7	
																									6
																									5
																									4
																									3
																									2
																									1

PLACE MONUMENT SYMBOL (◆) AT PROPER
LOCATION ON ABOVE INDEX

EXAMPLE



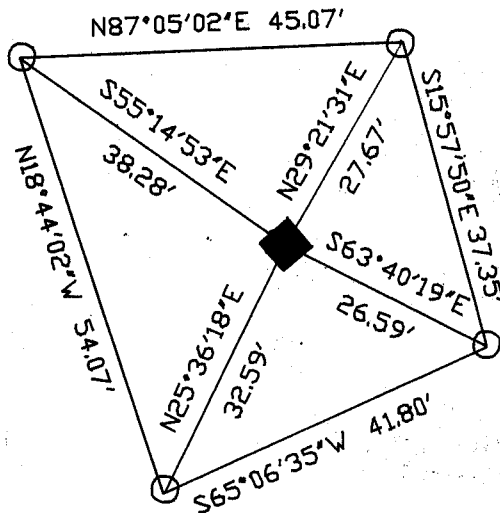
ROCK TWP
ROCK COUNTY WI

IF AVAILABLE
STATE PLANE COORDINATES

North (Y) _____ Eleve. (Z) _____
 East (X) _____ Zone _____
 Hor. Datum _____ Vert. Datum _____

e.) CORNER MONUMENT WITNESS MONUMENT

BEARINGS ARE BASED ON: TWP PROJECT



- 3/4"X24 REROD. 15" DEEP WITH MAGNETS
- FD 2 1/2"X36 IRON PIPE. 8" DEEP REPLACED WITH POLY MON. 12" DEEP PLACED CARSONITE POST ON WEST SIDE TOWNSHIP PROJECT. STATION #1271

MICROFILMED

SHEET 1 OF 2

CORNER CODE: V 17

(B) Describe any record evidence, monument evidence, occupational evidence, testimonial evidence or any other material evidence you considered, and whether the monument was found or placed.

- 1834 HARRISON ORIGINAL GOVERNMENT SURVEYOR. FIELD NOTES - SET CORNER TO SECTIONS 26, 27, 34, 35. BURR OAK 12 N50E 126, BURR OAK 18 S42E 152, BURR OAK 12 N12W 227, BURR OAK 12 S43W 86. NORTH AT 845.46' INTERSECTED BANK OF ROCK RIVER. SET MEANDER POST WHITE OAK 18 S24W 83 AND WHITE OAK 12 S54E 109.
- 1836 LYON ORIGINAL GOVERNMENT SURVEYOR. FIELD NOTES - NORTH BETWEEN SECTIONS 26 & 27. BEGAN AT POST ON RIGHT BANK OF ROCK RIVER (1172.16) TO A DOUBLE MAPLE 33" IN DIAMETER CORNER TREE CORNER TO SECTIONS 26 & 27 ON LEFT BANK OF ROCK RIVER. AT 2640 SET 1/4 SECTION POST.
- 1881 LEE VOL 2 PG 325 FOUND SE BEARING TREE AND STUMP OF NE BEARING TREE AND FENCE POST AT CORNER. SHOWS 2673.66 TO S 1/4 CORNER OF SECTION 27.
- 1887 RUGER VOL 2 PG 413 FOUND REMAINS OF OLD STAKE AND SE BEARING TREE AND STUMP OF NE BEARING TREE. CORNER IS 9" NORTH OF CORNER FENCE POST. SHOWS 1179.75 TO NORTHERLY MEANDER POST 1179.75'
- 1935 VOL 3 PG 275 SET 2"X30" PIPE FOR CORNER. SHOWS 2657.2 TO W 1/4 CORNER OF SECTION 35.
- 1935 SUNNY VOL 3 PG 276 IRON PIPE MONUMENT AT CORNER.

FOUND 2 1/2 X 36" IRON PIPE 8" DEEP. REPLACED WITH POLY MONUMENT. THE TOP OF THE MONUMENT IS 12" DEEP. PLACED CARSONITE POST ON WEST SIDE OF MONUMENT.

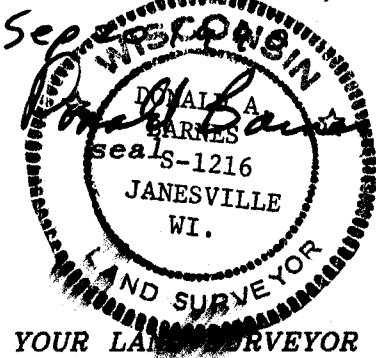
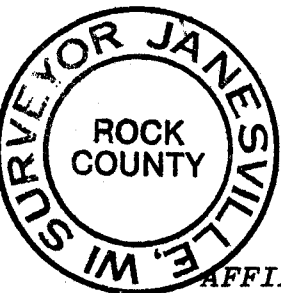
C) Was the corner restored through acceptance of (1) an obliterated evidence location, or, (2) a found perpetuated location?

ACCEPTED FOUND MONUMENT.

D) Describe any material discrepancy between the location of the corner as restored or reestablished and the location of that corner as previously restored or reestablished by distance and direction. Show the discrepancy on the plan view drawing under (a), above. Show the distances between the corner as previously restored or reestablished and (1) the corner as restored or reestablished, and (2) to at least 4 of the witness monuments shown on the drawing in (a), above.

(E) Was the corner reestablished through lost corner proportionate methods? If so, show the method, including the directions and distances to other public land survey corners used as evidence or used for proportioning the corner location.

I, Donald Barnes, hereby certify that the corner points as identified by the corner code index were, in a field survey on, July 20, 1990, established, re-established, monumented, re-monumented, recovered or restored as expressed below and in conformance with the regulations and rules as required in the current manual of survey instructions of the United States Department of Interior, Bureau of Land Management.



AFFIX YOUR LAND SURVEYOR SEAL

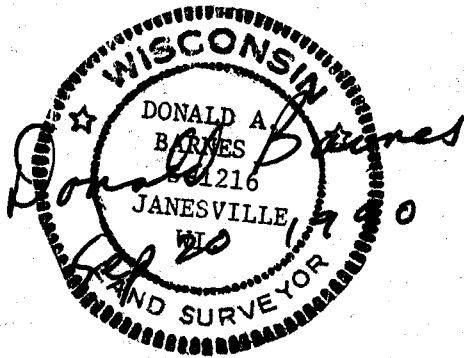
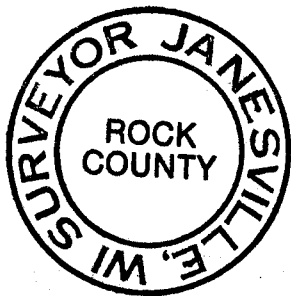
COUNTY SURVEYOR FILING DATA

Date of computer entry _____

Date microfilmed _____

Number of included sheets 1
CORNER CODE

V 17



RAIL ROAD R/W

