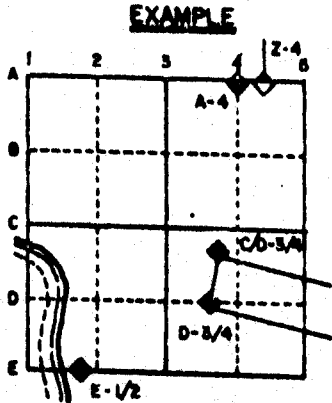


U.S. PUBLIC LAND SURVEY MONUMENT RECORD

For Public Land Survey Corners in the
T. 2 N., R. 12 E.

CORNER CODE INDEX

	1	2	3	4	5	6	7	8	9	10	11	12	13	14	15	16	17	18	19	20	21	22	23	24	25
A																									
B																									
C	6																								
D		5																							
E			4																						
F				3																					
G					2																				
H																									
I																									
J	7																								
K		6																							
L			5																						
M				4																					
N					3																				
O						2																			
P							1																		
Q																									
R																									
S																									
T																									
U																									
V																									
W	30																								
X		29																							
Y			28																						
Z				27																					
					26																				
						25																			
							24																		
								23																	
									22																
										21															
											20														
												19													
													18												
														17											
															16										
																15									
																	14								
																		13							
																			12						
																				11					
																					10				
																						9			
																							8		
																								7	
																									6
																									5
																									4
																									3
																									2
																									1



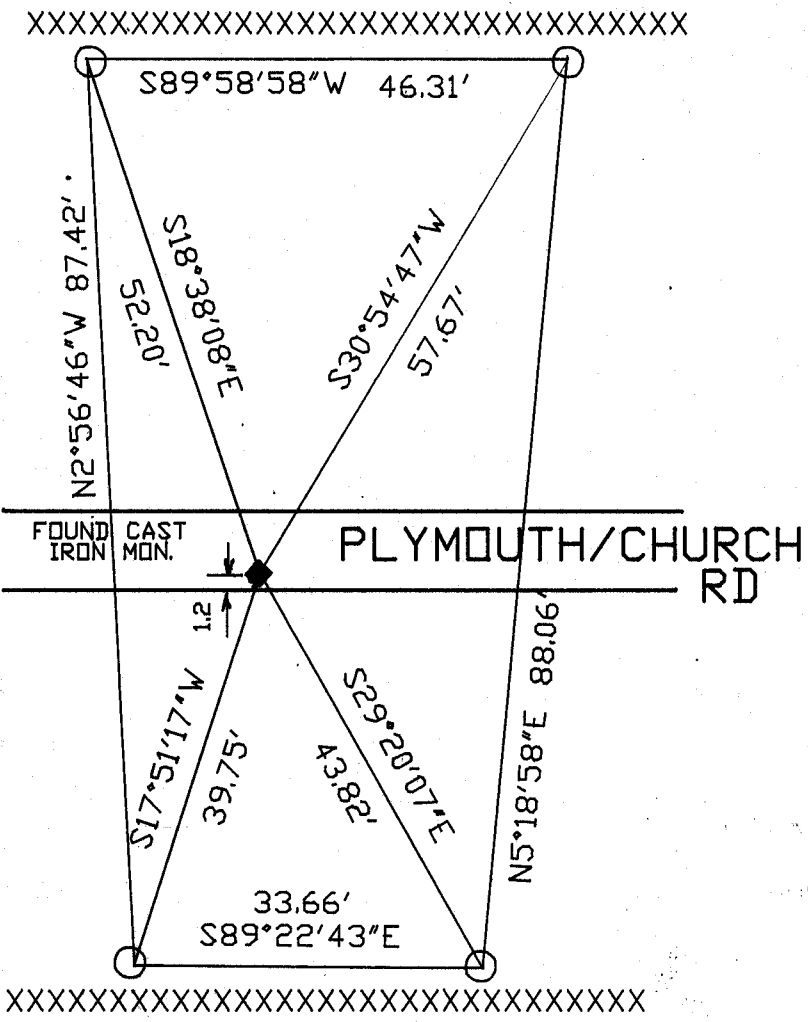
ROCK TWP
ROCK COUNTY WI

IF AVAILABLE
STATE PLANE COORDINATES

NAD North (Y) 219,662.56 Eleve. (Z) _____
 27 East (X) 2,242,428.15 Zone _____
 Hor. Datum _____ Vert. Datum _____
 WPL 219,662.30
2,242,427.39

PLACE MONUMENT SYMBOL (◆) AT PROPER LOCATION ON ABOVE INDEX

e.) ◆ CORNER MONUMENT ○ WITNESS MONUMENT



BEARINGS ARE BASED ON: ASSUMED

FIELD BOOK # 3 PG 29
 ○ 3/4X24 REROD WITH ORANGE PLASTIC CAP

MICROFILMED
 SHEET ___ OF ___

CORNER CODE: V7

(B) Describe any record evidence, monument evidence, occupational evidence, testimonial evidence or any other material evidence you considered, and whether the monument was found or placed.

- 1834 HARRISON ORIGINAL GOVERNMENT SURVEYOR. PLACED QUARTER SECTION CORNER. BURR OAK N74E 135.3' AND BURR OAK 8 S89E 142.56 AND MEASURED 2679.60 TO NW AND NE CORNERS OF SECTION 32.
- 1966 BATTERMAN JR. VOL 4 PG 287. SHOWS TIES AS STATE TIES. LANDMARKS ARE CUT CROSS IN BRASS DISC IN 8" CONCRETE MONUMENTS. SHOWS CORNER AS 6.74' NORTH OF CENTER OF PAVEMENT. SHOWS BEARING OF N89-49E TO S 1/6 CORNER OF SE 1/4 OF SECTION 29 AND S89-56E FROM 1/16TH CORNER TO SE CORNER OF SECTION 29. SHOWS WPL COORDINATES OF 219,662.30; 2,242,427.39
- 1972 LEE VOL 4 PG 578 SHOWS TIES AND MONUMENT 1' NORTH OF SOUTH EDGE OF PAVEMENT. SHOWS N89-26-10W 2673.37 TO SE AND SW CORNERS OF SECTION 29. ALSO SHOWS N0-05-26E TO A 2" PIPE AT CENTER OF SECTION 29.
- 1981 BARNES VOL 6 PG 143 SHOWS WPL COORDINATES WHICH ARE THE SAME AS IN VOL 4 PAGE 287.
- 1981 BARNES VOL 6 PG 144 SHOWS N89-10-09E 2673.22 TO THE NW CORNER OF SECTION 32 AND A COMBS DISTANCE OF 2662.93.

FOUND CAST IRON MONUMENT.

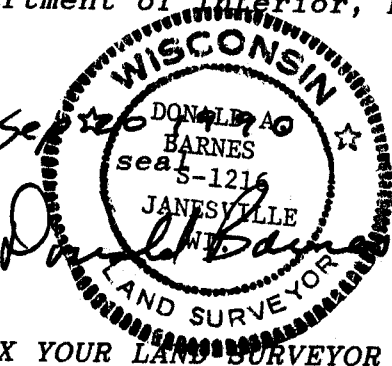
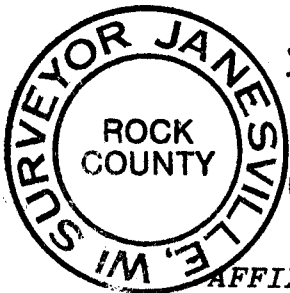
C) Was the corner restored through acceptance of (1) an obliterated evidence location, or, (2) a found perpetuated location?

ACCEPTED FOUND MONUMENT.

D) Describe any material discrepancy between the location of the corner as restored or reestablished and the location of that corner as previously restored or reestablished by distance and direction. Show the discrepancy on the plan view drawing under (a), above. Show the distances between the corner as previously restored or reestablished and (1) the corner as restored or reestablished, and (2) to at least 4 of the witness monuments shown on the drawing in (a), above.

(E) Was the corner reestablished through lost corner proportionate methods? If so, show the method, including the directions and distances to other public land survey corners used as evidence or used for proportioning the corner location.

I, Donald Barnes, hereby certify that the corner points as identified by the corner code index were, in a field survey on, August 17, 1990, established, re-established, monumented, re-monumented, recovered or restored as expressed below and in conformance with the regulations and rules as required in the current manual of survey instructions of the United States Department of Interior, Bureau of Land Management.



AFFIX YOUR LAND SURVEYOR SEAL

COUNTY SURVEYOR FILING DATA

Date of computer entry _____

Date microfilmed _____

Number of included sheets _____
CORNER CODE

V7