

U.S. PUBLIC LAND SURVEY MONUMENT RECORD

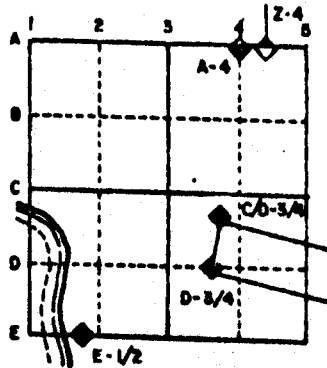
For Public Land Survey Corners in the
T. 2 N., R. 12 E.

CORNER CODE INDEX

	1	2	3	4	5	6	7	8	9	10	11	12	13	14	15	16	17	18	19	20	21	22	23	24	25
A																									
B																									
C	6																								
D		5																							
E			4																						
F				3																					
G					2																				
H																									
I																									
J																									
K																									
L																									
M																									
N																									
O																									
P																									
Q																									
R																									
S																									
T																									
U																									
V																									
W																									
X																									
Y																									
Z																									

PLACE MONUMENT SYMBOL (◆) AT PROPER LOCATION ON ABOVE INDEX

EXAMPLE



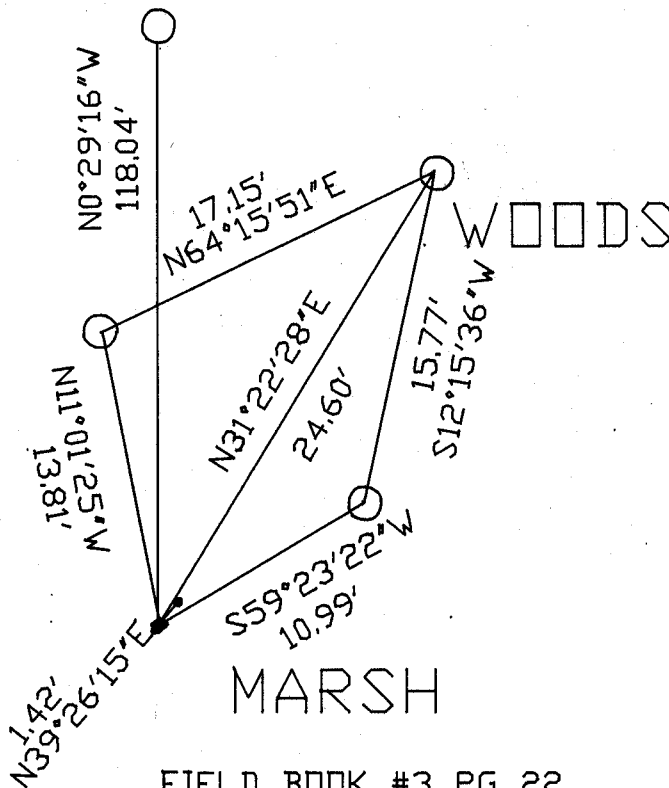
Rock TWP
ROCK COUNTY WI

IF AVAILABLE
STATE PLANE COORDINATES

North (Y) _____ Eleve. (Z) _____
 East (X) _____ Zone _____
 Hor. Datum _____ Vert. Datum _____

◆ CORNER MONUMENT ○ WITNESS MONUMENT

FD 1" PIPE NEXT TO R/W POST ON SOUTH SIDE PVMT



BEARINGS ARE BASED ON: IWP PROJECT

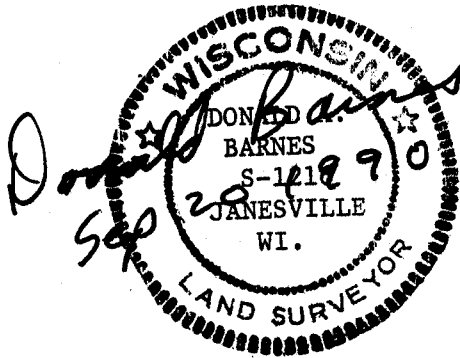
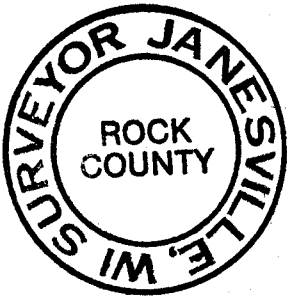
FIELD BOOK #3 PG 22

- 3/4X24 REBAR WITH ORANGE PLASTIC CAP
- ◆ DISK IN CONCRETE MON.
- FD 2 1/2" PIPE

MICROFILMED

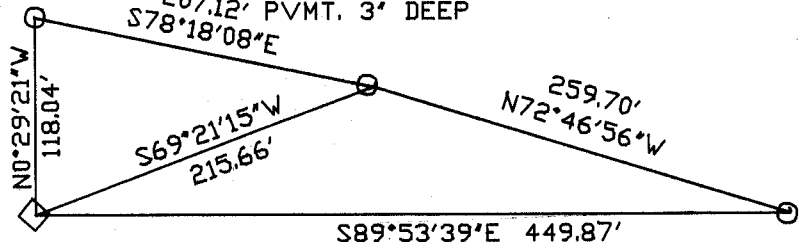
SHEET 1 OF 2

CORNER CODE: T 17



FD 1' PIPE NEXT TO R/W POST

FOUND 1/2' PIN 4' SOUTH OF N. EDGE PVMT. 3' DEEP



FD DISK IN CONCRETE

FD 1' PIPE 2' DEEP 4.2 N. OF N EDGE OF PVMT

T 17

(B) Describe any record evidence, monument evidence, occupational evidence, testimonial evidence or any other material evidence you considered, and whether the monument was found or placed.

- 1834 HARRISON ORIGINAL GOVERNMENT SURVEYOR. FIELD NOTES - NORTH BETWEEN SECTIONS 26 AND 27 AND AT 845.46' INTERSECTED THE RIGHT BANK OF ROCK RIVER. SET MEANDER POST WHITE OAK 18 S24W 83 AND WHITE OAK 12 S54E 109.
- 1836 LYON ORIGINAL GOVERNMENT SURVEYOR. FIELD NOTES - NORTH BETWEEN SECTIONS 26 AND 27. BEGAN AT POST ON RIGHT BANK OF ROCK RIVER AT 1172.16, AT 1525.26' A DOUBLE MAPLE 33" IN DIAMETER CORNER TREE CORNER TO SECTIONS 26 AND 27 ON LEFT BANK OF ROCK RIVER, AND AT 2640 SET QUARTER SECTION POST. WHITE OAK 13 S43E 32 AND WHITE ASH 14 S26W 31.
- 1869 LEE VOL 1 PG 337. FOUND STUMP OF SE BEARING TREE AND REMAINS OF OLD STAKE. SET ASH STAKE WITH SMALL LIMESTONE ON NORTH AND SOUTH AND SMALL HARD HEAD EAST AND WEST ABOUT 2.64' EAST FROM SOUTH SIDE OF OLD ASH STUMP. SHOWS 2646.60 TO NE CORNER OF SECTION 27 AND 1122' SOUTHERLY TO MEANDER POST.
- 1873 RUGER VOL 2 PG W110 FOUND OLD STAKE AND STUMPS OF BOTH BEARING TREES. SW BEARING TREE IS 26 INSTEAD OF 31 LINKS DISTANT; BEARINGS AGREE. DROVE NEW STAKE AND PUT SMALL LIMESTONE BESIDE IT. SHOWS 1120.02 TO SOUTHERLY MEANDER POST AND 2627.13 TO CENTER OF SECTION 26.
- 1889 BLEEDORN VOL 2 PG 423 FOUND STAKE AND LIMESTONE SET BY RUGER. ALSO STUMPS OF BEARING TREES. SET LIMESTONE 15XX5X3 PUT SMALL LIMESTONE ON NORTH AND SOUTH OF SAME. SHOWS 1315.38' TO THE 1/6TH CORNER THAT IS TO THE EAST AND 1120.02' TO THE MEANDER POST THAT IS TO THE SOUTH.
- 1967 LEE VOL 5 PG 519 CONCRETE MONUMENT AT CORNER.
- 1989 BARNES VOL 6 PG 396 SHOWS LEE'S 1964 DISTANCE OF 2644.50 TO THE NW CORNER OF SECTION 26 AND LEE'S 1969 DISTANCE OF 1315.45 TO THE SE CORNER OF THE SW 1/4 OF THE NW 1/4 OF SECTION 26.

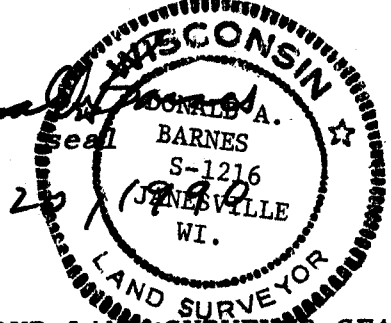
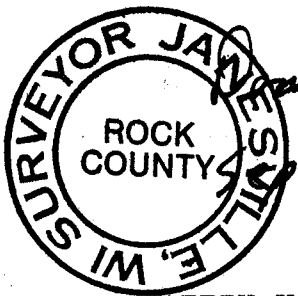
FOUND DISK IN CONCRETE AND N39-26-15E 1.42' A 2 1/2 PIPE WHICH HAD FLAGGING AROUND IT.

C) Was the corner restored through acceptance of (1) an obliterated evidence location, or, (2) a found perpetuated location?

ACCEPTED CONCRETE MONUMENT.

D) Describe any material discrepancy between the location of the corner as restored or reestablished and the location of that corner as previously restored or reestablished by distance and direction. Show the discrepancy on the plan view drawing under (a), above. Show the distances between the corner as previously restored or reestablished and (1) the corner as restored or reestablished, and (2) to at least 4 of the witness monuments shown on the drawing in (a), above.

I, Donald Barnes, hereby certify that the corner points as identified by the corner code index were, in a field survey on, July 20, 1990, established, re-established, monumented, re-monumented, recovered or restored as expressed below and in conformance with the regulations and rules as required in the current manual of survey instructions of the United States Department of Interior, Bureau of Land Management.



AFFIX YOUR LAND SURVEYOR SEAL

COUNTY SURVEYOR FILING DATA

Date of computer entry _____

Date microfilmed _____

Number of included sheets 17
CORNER CODE

T 17