

U.S. PUBLIC LAND SURVEY MONUMENT RECORD

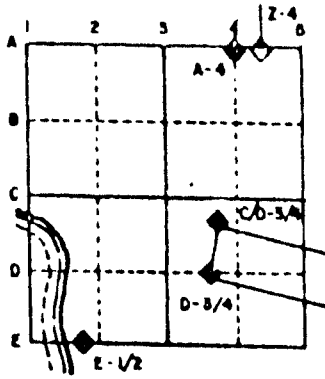
For Public Land Survey Corners in the  
T. 2 N., R. 12 E.

CORNER CODE INDEX

	1	2	3	4	5	6	7	8	9	10	11	12	13	14	15	16	17	18	19	20	21	22	23	24	25
A																									
B																									
C	6																								
D		5																							
E			4																						
F				3																					
G					2																				
H																									
I	7																								
J		8																							
K			9																						
L				10																					
M					11																				
N						12																			
O	7																								
P		8																							
Q			9																						
R				10																					
S					11																				
T						12																			
U							13																		
V								14																	
W									15																
X										16															
Y											17														
Z												18													
													19												
														20											
															21										
																22									
																	23								
																		24							
																			25						
																				26					
																					27				
																						28			
																							29		
																								30	
																									31
																									32
																									33
																									34
																									35
																									36

PLACE MONUMENT SYMBOL (●) AT PROPER LOCATION ON ABOVE INDEX

EXAMPLE



ROCK TWP  
ROCK COUNTY WI

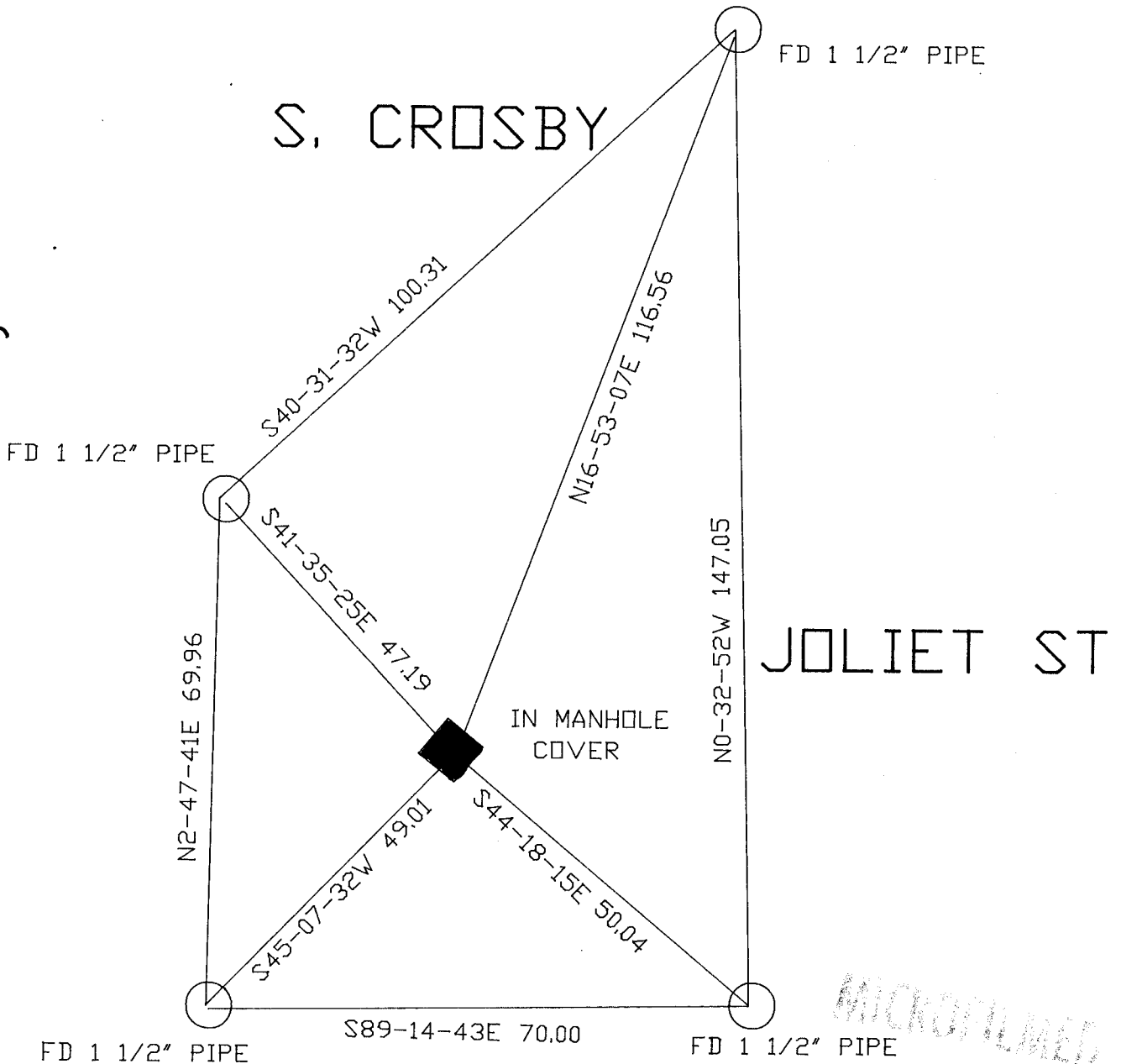
IF AVAILABLE  
STATE PLANE COORDINATES

North (Y) \_\_\_\_\_ Eleve. (Z) \_\_\_\_\_  
 East (X) \_\_\_\_\_ Zone \_\_\_\_\_  
 Hor. Datum \_\_\_\_\_ Vert. Datum \_\_\_\_\_

◆ CORNER MONUMENT

○ WITNESS MONUMENT

BEARINGS ARE BASED ON: Township Project



(B) Describe any record evidence, monument evidence, occupational evidence, testimonial evidence or any other material evidence you considered, and whether the monument was found or placed.

- 1835 LYON ORIGINAL GOVERNMENT SURVEYOR. FIELD NOTES - SET POST CORNER TO SECTIONS 2,3,10,11. BUR OAK 7 N59 3/4E 81,BUR OAK 6 N13W 159.
- 1869 RUGER VOL 2 PG 15 FOUND LIMESTONE AT CORNER. ALSO FOUND STUMPS OF BEARING TREES. MEASURED 2431.44 TO MEANDER CORNER THAT IS TO THE NORTH.
- 1870 RUGER VOL 2 PG 21. MEASURED 2665.74 TO N 1/4 CORNER OF SECTION 11.
- 1871 RUGER VOL 2 PG 61 MEASURED 2665.74 TO S 1/4 CORNER OF SECTION 2.
- 1920 ELY "CRESTLAWN ADD" BK 9 PG 37 CALLS FOR A 35.00 ON THE EAST S. CROSBY AND 35.00 ON THE NORTH SIDE OF JOLIET ST. CALLS FOR AN ANGLE OF 91-1834 AT THE NW CORNER OF SECTION 11. CALLS FOR AN IRON PIPE.
- 1920 ELY "RIVER HEIGHTS ADD" BK 10 PG 18 CALLS FOR A 35.00 R/W ON THE SOUTH SIDE OF JOLIET ST AND 33.00 ON THE EAST SIDE OF S. CROSBY. CALLS FOR AN ANGLE OF 88-53 AT THE NW CORNER OF SECTION 11 AND 91-08 AS SHOWN IN MAP. CALLS FOR AN IRON PIPE.
- 1938 SUNNY VOL 3 PG 368. FOUND IRON PIPE MONUMENT AT CORNER. SHOWS S87-15W 1051.6 TO RIVER ROAD.
- 1939 SUNNY VOL 3 PG 410 FOUND PIPE MONUMENT. SHOWS S87-15W 556.6 TO BACK OF SURVEYED LOTS.
- 1939 SUNNY VOL 3 PG 411. FOUND IRON PIPE MONUMENT. SHOWS S87-15W 1051.6 TO RIVER ROAD.
- 1958 KAUKUSKE "PERSHING PARK" BK19 PG 29 CALLS FOR R/W AS SHOWN IN MAP,ALSO CALLS FOR ANGLES OF 88-40 AND 91-08 AT THE NW CORNER OF SECTION 11. CALLS FOR THE CORNER BUT NOT THE TYPE OF MONUMENT.

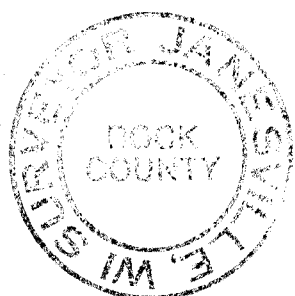
THE CORNER IS IN THE MAN HOLE COVER. RESTORED CORNER BY MAINTAINING HARMONY WITH THE RIGHT OF WAY AND WITH RECORD DISTANCES.

C) Was the corner restored through acceptance of (1) an obliterated evidence location, or, (2) a found perpetuated location?

RESTORED CORNER THROUGH ACCEPTANCE OF OBLITERATED EVIDENCE LOCATION.

I, Donald Barnes, hereby certify that the corner points as identified by the corner code index were, in a field survey on, SEPTEMBER 4,1991, established, re-established, monumented, re-monumented, recovered or restored as expressed below and in conformance with the regulations and rules as required in the current manual of survey instructions of the United States Department of Interior, Bureau of Land Management.

*Donald Barnes* seal



COUNTY SURVEYOR FILING DATA

Date of computer entry \_\_\_\_\_

Date microfilmed \_\_\_\_\_

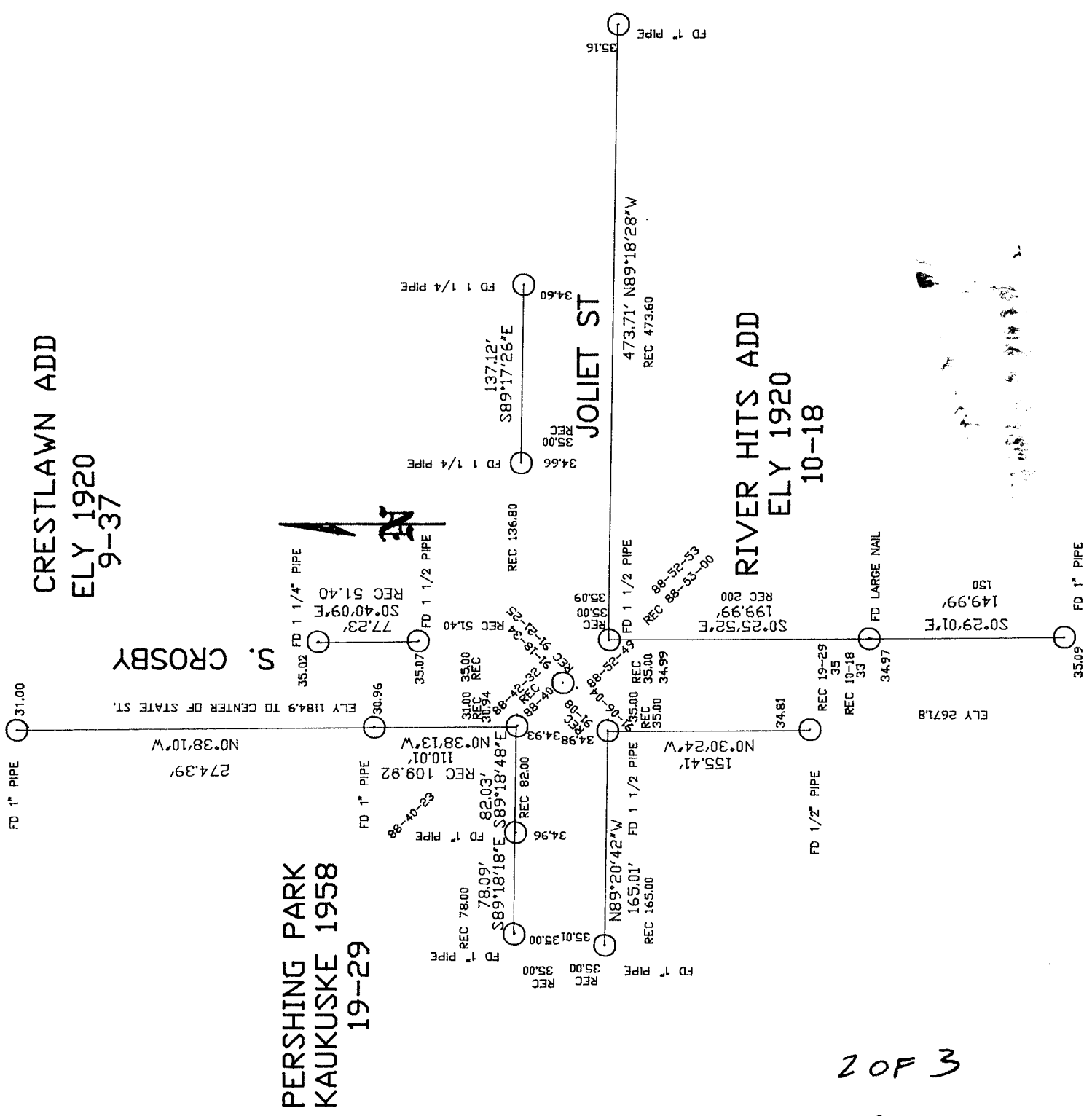
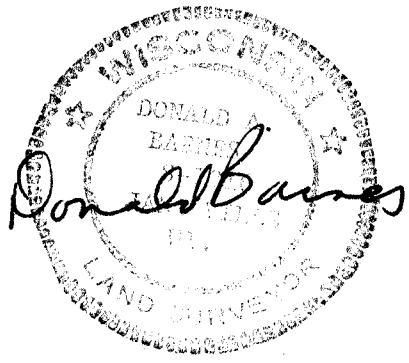
Number of included sheets \_\_\_\_\_

CORNER CODE

AFFIX YOUR LAND SURVEYOR SEAL

1 OF 3

E 17



2 OF 3  
E 17

SEC 2



W 1/4 CDR

S89-59-02E 5215.08  
RUGER 1882 2613.34

CENTER

E 1/4 CD

SEC 1

S0-33-14E 2651.15  
BATTERMAN 1957 2642.72  
RUGER 1870 2647.92

3 OF 3  
E 17

NW CDR

REC 91-28-04  
REC 91-36-04

S0-26-14E 2672.96  
COMBS 1989 2673.00  
SUB 2671.48  
ELY 1920 1671.80  
ELY 1920 2673.00  
REC 2671.80

REC 88-42-32  
REC 88-40  
91-18-34  
REC 91-21-25

S89-19-02E 2667.47  
RUGER 1871 2665.74  
RUGER 1870 2665.74

KUKUSKE 1959 1334.07  
KUKUSKE 1959 88-37  
91-37-39

N 1/4 CDR

S89-15-26E 2673.73  
COMBS 1987 2673.74  
RUGER 1869 2672.18  
LOCKE 1865 2665.70

NE CDR

SUNNY 1337.22

CITY MAP 1322.50  
BATTERMAN 1957 2669.33  
SUNNY #06349 2613.00  
BLEEDHORN 1891 2644.84  
RUGER 1877 2636.70  
SUNNY 1290.0 CENTER OF P.V.M.T.

N 1/4 CDR

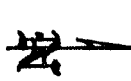
1.15 OFF NW/NE LINE  
.55 OFF 1/16-NE LINE

S88-55-54E 2554.04  
RUGER 1877 2548.92  
RUGER 1870 2548.92

NE CDR

.22 OFF N/S LINE  
.148 OFF E/W LINE

KAKUSKE 1960 5332.81  
NO-19-45W 2662.23  
MAP 3865 1331.8



W 1/4 CDR

REC 89-21-33  
REC 89-19-21

S0-17-29E 2643.57  
RUGER 1883 2641.98

REC 90-51-30  
REC 90-53-28 CENTER  
REC 89-15-17 CENTER  
REC 89-17  
S89-32-45E 2662.28  
REC 2661.10

SEC 11

KAKUSKI 1320.22  
COMMONS SOUTH  
BIAGI 1972 1324.40  
NO-19-11W 2644.68

CENTER

REC 90-59-49  
REC 90-50-15  
KAKUSKI 1963 2679.68  
KANDERR 2680.72  
S89-28-56E 2680.25

W 1/4 CDR

S0-0-25E 2642.61  
RUGER 1883 2641.98  
RUGER 1870 2636.87

SEC 12

COMBS 1976 1321.22  
S0-00-21E 1321.51

RUGER 2644.37  
SUNNY 2650.8  
BATTERMAN 1959 88-30-28  
91-28-20  
91-28-22  
91-28-24  
91-28-26  
91-28-28  
91-28-30  
91-28-32  
91-28-34  
91-28-36  
91-28-38  
91-28-40  
91-28-42  
91-28-44  
91-28-46  
91-28-48  
91-28-50  
91-28-52  
91-28-54  
91-28-56  
91-28-58  
91-28-60  
91-28-62  
91-28-64  
91-28-66  
91-28-68  
91-28-70  
91-28-72  
91-28-74  
91-28-76  
91-28-78  
91-28-80  
91-28-82  
91-28-84  
91-28-86  
91-28-88  
91-28-90  
91-28-92  
91-28-94  
91-28-96  
91-28-98  
91-29-00

REC 91-28-30  
REC 91-28-32  
REC 91-28-34  
REC 91-28-36  
REC 91-28-38  
REC 91-28-40  
REC 91-28-42  
REC 91-28-44  
REC 91-28-46  
REC 91-28-48  
REC 91-28-50  
REC 91-28-52  
REC 91-28-54  
REC 91-28-56  
REC 91-28-58  
REC 91-28-60  
REC 91-28-62  
REC 91-28-64  
REC 91-28-66  
REC 91-28-68  
REC 91-28-70  
REC 91-28-72  
REC 91-28-74  
REC 91-28-76  
REC 91-28-78  
REC 91-28-80  
REC 91-28-82  
REC 91-28-84  
REC 91-28-86  
REC 91-28-88  
REC 91-28-90  
REC 91-28-92  
REC 91-28-94  
REC 91-28-96  
REC 91-28-98  
REC 91-29-00

CENTER

S0-17-36E 2639.14

2.56 OFF N/S LINE  
.44 OFF E/W LINE

REC 91-30-00  
REC 91-25-22  
S88-59-14E 2557.83

E 1/4 CDR

S0-26-30E 2646.28  
RUGER 1871 2647.26  
LOCKE 1865 2640.92  
LOCKE 1865 2641.58

BATTERMAN 1962 2649.98  
BARNES S0-29-17E 2650.05  
SUNNY 1939 2759.60  
RUGER 1871 2649.57

SW CDR

S89-31-21E 2663.60  
BATTERMAN 1947 2654.95  
RUGER 1883 2648.80  
LOCKE 1867 2650.56

S 1/4 CDR

S89-31-23E 2665.79  
LEE 1880 2656.50  
LOCKE 1867 2664.75

SE CDR

S89-02-55E 2656.97  
KANDERR 1964 2657.85

S 1/4 CDR

LEE 1869 2647.92  
S88-49-54E 2564.85

SE CDR