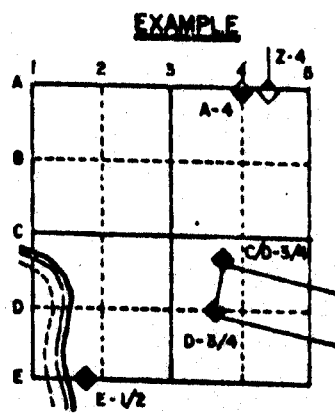


U.S. PUBLIC LAND SURVEY MONUMENT RECORD

For Public Land Survey Corners in the
T. ___ N., R. ___ E.

CORNER CODE INDEX

	1	2	3	4	5	6	7	8	9	10	11	12	13	14	15	16	17	18	19	20	21	22	23	24	25
A																									
B																									
C	6																								
D		5																							
E			4																						
F				3																					
G					2																				
H																									
I	7																								
J		8																							
K			9																						
L				10																					
M					11																				
N						12																			
O							13																		
P								14																	
Q									15																
R										16															
S											17														
T												18													
U													19												
V														20											
W															21										
X																22									
Y																	23								
Z																		24							



ROCK TWP
ROCK COUNTY WI

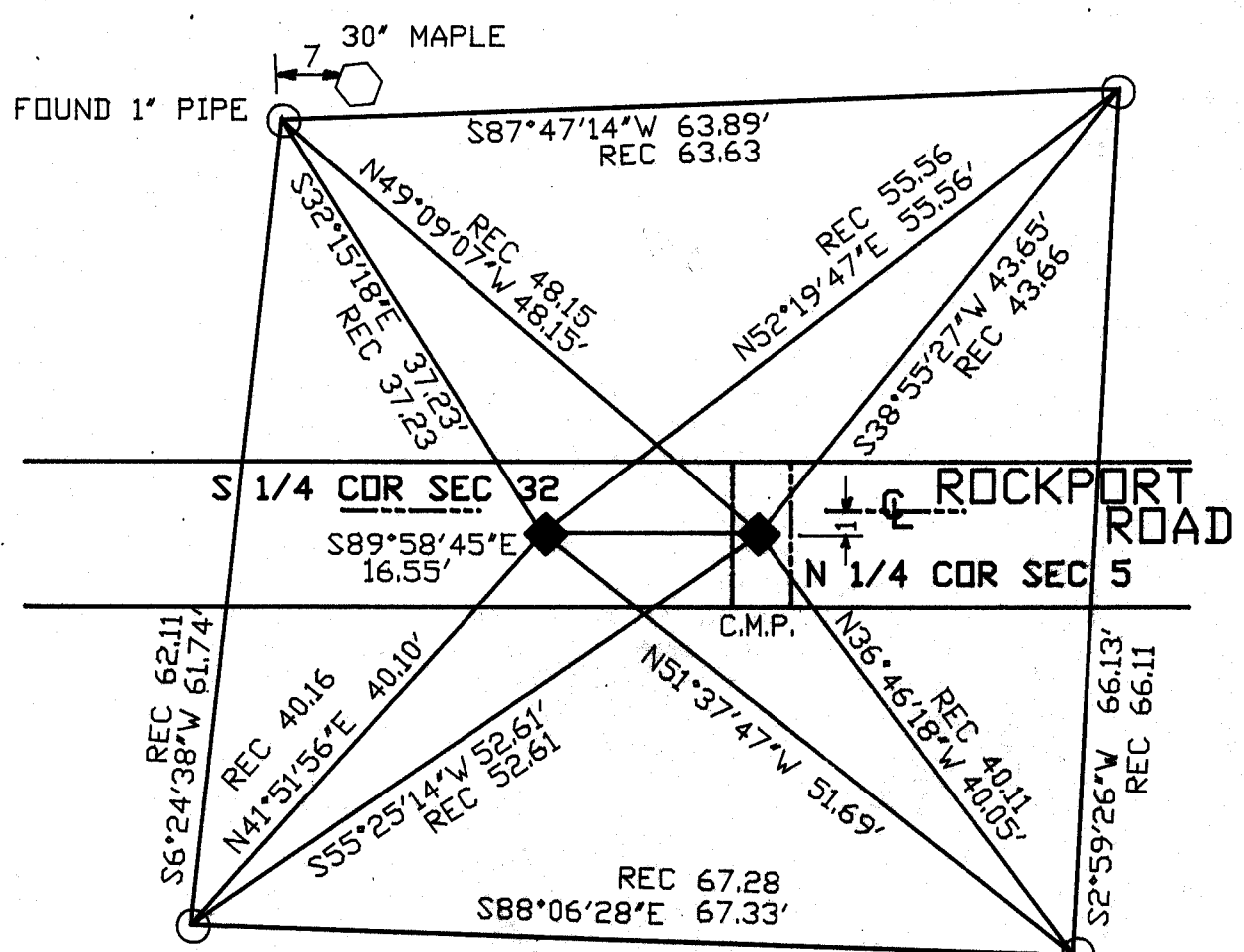
IF AVAILABLE
STATE PLANE COORDINATES

NAP North (Y) 246,205.53 Elev. (Z) _____
 27 East (X) 2,241,888.26 Zone _____
 Hor. Datum _____ Vert. Datum _____
 JANEVILLE PROJECT WPL 246,204.60
 2,241,888.82 2,241,888.62

PLACE MONUMENT SYMBOL (◆) AT PROPER LOCATION ON ABOVE INDEX

e.) ◆ CORNER MONUMENT ○ WITNESS MONUMENT

BEARINGS ARE BASED ON: ASSUMED



FOUND BENT 1' PIPE ◆ POLY. MONUMENT ○ FOUND 1' PIPE

JANEVILLE FIELD BOOK #1 PAGE 54
#2 PAGE 7

MICROFILMED

SHEET ___ OF ___

CORNER CODE: A7

(B) Describe any record evidence, monument evidence, occupational evidence, testimonial evidence or any other material evidence you considered, and whether the monument was found or placed.

- 1834 HARRISON ORIGINAL GOVERNMENT SURVEYOR. FIELD NOTES - INTERSECTED NORTH BOUNDARY 16.5' EAST OF POST. SET POST IN MOUND. MEASURED 2743.62' TO W 1/4 CORNER OF SECTION 4.
- 1859 RUGER VOL 1 PG 111. THE POSTS OF THE SECTIONS IN THE TOWN OF ROCK ARE 16.5' EAST OF THOSE FOR JANESVILLE. SURROUNDED POST WITH 3 LIMESTONES & TOOK BEARING STONES, LIMESTONE S2-45W 44 1/4; N29-07W 63.
- 1860 VOL 1 PG 126 SURROUNDED POST WITH 3 LIMESTONES AND TOOK BEARING STONES (SAME AS ABOVE). SHOWS THE CORNER 16.5' EAST OF THE SE CORNER OF SECTION 32 JANESVILLE TOWNSHIP AND A DISTANCE OF 2628.78 TO THE N 1/4 CORNER OF SECTION 4.
- 1932 SUNNY VOL 3 PG 208 DUG AND FOUND NOTHING.
- 1965 BATTERMAN JR. VOL 4 PG 212 DUG AND FOUND NOTHING. SHOWS WPL COORDINATES OF N/S 246,232.14; E/W 2,244,544.31
- 1970 BATTERMAN VOL 4 PG 436 DUG ON 6-8-1965 FOUND NOTHING SET 1" PIPE AND REFERENCED SAME. SHOWS A DISTANCE OF 16.5 TO THE SW CORNER OF SECTION 33 JANESVILLE TOWNSHIP.
- 1981 BARNES VOL 6 PG 186. FOUND MONUMENT BOX SHOWS S89-5-25E 2634.68 TO THE N 1/4 CORNER OF SECTION 6.
- 1987 BARNES JANESVILLE REMONUMENTATION PROJECT. FOUND 1" PIPE 0.3' DEEP. DROVE INTO C.M.P. & PLACED 24" POLY MONUMENT ON TOP.
- FOUND POLY MONUMENT

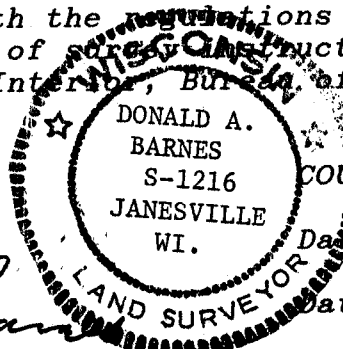
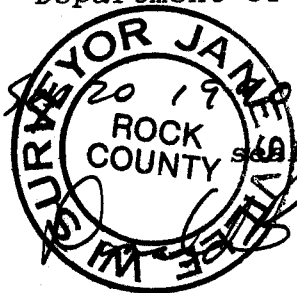
C) Was the corner restored through acceptance of (1) an obliterated evidence location, or, (2) a found perpetuated location?

ACCEPTED FOUND POLY MONUMENT.

D) Describe any material discrepancy between the location of the corner as restored or reestablished and the location of that corner as previously restored or reestablished by distance and direction. Show the discrepancy on the plan view drawing under (a), above. Show the distances between the corner as previously restored or reestablished and (1) the corner as restored or reestablished, and (2) to at least 4 of the witness monuments shown on the drawing in (a), above.

(E) Was the corner reestablished through lost corner proportionate methods? If so, show the method, including the directions and distances to other public land survey corners used as evidence or used for proportioning the corner location.

I, Donald Barnes, hereby certify that the corner points as identified by the corner code index were, in a field survey on, July 18, 1990, established, re-established, monumented, re-monumented, recovered or restored as expressed below and in conformance with the regulations and rules as required in the current manual of surveying instructions of the United States Department of Interior, Bureau of Land Management.



CO. SURVEYOR FILING DATA
Date of computer entry _____

Date microfilmed _____

Number of included sheets _____
CORNER CODE

AFFIX YOUR LAND SURVEYOR SEAL