

Paper weight-110# (minimum)

Black nonfading ink required

U.S. PUBLIC LAND SURVEY MONUMENT RECORD

For Public Land Survey Corners In:
T. 4 N. R. 10 E. 4th P.M.
CORNER CODE INDEX

WI ADMINISTRATIVE CODE A-E 7.08 REQUIREMENT
REV 10/23/2004 USMONREC.DWG

UNION TWP
ROCK COUNTY WI

IF AVAILABLE
ROCK COUNTY COORDINATES PREFERRED

A	1	2	3	4	5	6	7	8	9	10	11	12	13	14	15	16	17	18	19	20	21	22	23	24	25	A		
B		6					5						4					3								2	B	
C			6																								1	C
D																												D
E																												E
F																												F
G																												G
H																												H
J																												J
K																												K
L																												L
M																												M
N																												N
O																												O
P																												P
Q																												Q
R																												R
S																												S
T																												T
U																												U
V																												V
W																												W
X																												X
Y																												Y
Z																												Z

North _____ Elev. _____

East _____

Hor. Datum _____ Vert. Datum _____

LATITUDE _____ ELLIPS. HT. _____

LONGITUDE _____

NAD83(91) _____ NETWORK ADJ. YR 2010

GPS (X) _____ TRAVERSE (X) X

BASED ON THE FOLLOWING CONTROL:

◆ CORNER MONUMENT

○ WITNESS MONUMENT

BEARINGS ARE BASED ON: --- ROCK COUNTY PROJECTION ---

FIELD BOOK _____ PAGE # _____
OR OBSERVATION SHEET _____

SHEET 1 OF 4

SHOW A PLAN VIEW DRAWING DEPICTING THE CORNER MONUMENT AND SURROUNDING PHYSICAL FEATURES, INCLUDING THE EXCAVATION AREA AND DEPTH.

PLANNING & ZONING COMMITTEE ADOPTED THIS FORM ON 12/2/1982

CORNER CODE E-17

UN629 SWCORSEC35

(B) Describe any record evidence, monument evidence, occupational evidence, testimonial evidence or any other material evidence you considered, and whether the monument was found or placed.

- 1833 BRINK & MULLETT (SEP 12) T4N R10E
WEST ON SOUTH SIDE OF SECTION 35 (PG107)
1351.02 BURR OAK 16
2640.00 SET QUARTER SECTION POST BURR OAK 10
N53E 52.80', BURR OAK 10 N30 1/2W 64.68'
3079.56 BURR OAK 10
5016.00 ENTER MARSH OR CREEK BOTTOM
5280.00 SET POST FOR CORNER TO SECTIONS 34 &
35. BURR OAK 8 N19W 110.88', BURR OAK 14
151.14'. LAND ROLLING SECOND RATE BURR
OAK ? OAK HIGH RED ROOT.
- 1833 BRINK & MULLETT (SEP 12) T4N R10E
WEST ON SOUTH SIDE OF SECTION 34 (PG107)
1840.08 STREAM 11.88' CROSSES SOUTH
2640.00 SET QUARTER SECTION POST IN MARSH AND
MADE A MOUND
3630.00 LEAVE MARSH
5280.00 SET POST FOR CORNER TO SECTIONS 33 & 34
BLACK OAK 12 N13E 26.4'; BURR OAK 7 N58
1/2W 23.76' WEST OF MARSH LAND ROLLING
BURR OAK B. OAK HAZLE RED ROOT ROSE
WILLOW MARSH RICH BOTTOM WILLOW GRASS
CROSSES ALL SECOND RATE.
- 1833 HARRISON (NOV7) TOWN 4N RANGE 10E NORTH BETWEEN
34 & 35
99.0 ENTER S.W {W CIRCLED & E PLACED ABOVE}
POINT OF TIMBER
330.0 LEAVE IT & ENTER MARSH
2640.00 QUARTER SEC COR. SET A POST & RAISED A
MOUND OF TUSSOCK
3496.02 BROOK 6.6' CRS WEST
3847.8 CREEK 16.5' CRS S.W.
4950.0 PASS A SE POINT OF TIMBER
5280.00 SET COR TO SECS 26,27,34,35 NEAR WEST
EDGE OF WET PRAIRIE {RED I 10 S21E 211.2';
RED O 10 S34W 10.56'; RED O 10 N75W 66.00'
LAND LEVEL & WET 3RD RATE GRASS &
WILLOWS
- 1833 HARRISON (DEC 3RD) NORTH BET SEC. 2 & 3 T3N R10E 4TH
MER.
738.54 BURR O 12 IN DIAMETER
924 ENTER MARSH
2640.00 QUARTER SEC COR POST NO MOUND
4849.02 INT. N BDY 60.06' W OF POST. POST & RAISED
MOUND LAND LEVEL & WET 3RD RATE MOSTLY
ALL MARSH. DEC 3RD 1833
- 1863 LOCKE VOL 1 PG 194 @ NE COR SEC 3 FD NOTHING. @ SE
COR SEC 34 FD BTS FOR UNION. DISTANCE IN NOTES TOOK
MEASUREMENTS AS CORRECT. SHOWS NE 3 AS WEST 60.06 OF
SE COR SEC 34. FROM NE COR SEC 3 VAR 7-55 2203.08 TO
SET PINE STAKE & 4 VERY SMALL STONES ON N,S,E, & W. @
E 1/4 COR SEC 3
- 1867 MAGNOLIA TWP ROAD BK 1 PG 33 BEGINNING AT THE SAID
NE CORNER OF SEC 3 THENCE WEST ON THE TOWN LINE
BETWEEN THE SAID TOWNS UNTIL IT INTERSECTS A HIGHWAY
RUNNING NORTH AND SOUTH ON THE WEST LINE OF SAID
SECTION 3 AND SECTION 34 OF MAGNOLIA THENCE SOUTH
ON THE SECTION LINE TO THE FIRST QUARTER STAKE WHERE
IT WILL INTERSECT THAT PART OF SAID TERRITORIAL ROAD
HERETOFORE ESTABLISHED PURSUANT TO SAID
APPLICATION WHEREOF THE FOREGOING IS AND ACCURATE

SEAL
Subscribed

Orval Barnes

SHEET 1 OF 4

CORNER CODE Z-17

Nov 10, 2011

UN629 SWCORSEC35

SURVEY; AND THE LINE OF SAID SURVEY IS TO BE THE CENTER OF SAID HIGHWAY; AND THE SAME IS ESTABLISHED FOUR RODS IN WIDTH AND IT IS FURTHER

- 1867 LOCKE VOL 1 PG 303 & #5274 FD E BT & STUMP OF W BT COR POST OF D. WADSWORTH FENCE ON COR. 60.06 EAST OF SET STAKE IN MOUND @ NW COR SEC 2 T3N R10E. VAR 7-25 2628.12 TO S 1/4 COR SEC 35 & VAR 7-25 5256.24 TO SE COR SEC 35
- 1870 RUGER AUG REMON-70 EAST ON SOUTH LINE OF SW 1/4 SEC 34 ON A VAR 6-55 OFFSET NORTH 5.45'
 - 2622.84 INTERSECTED QUARTER LINE 11.22' NORTH OF QUARTER CORNER. FOUND REMAINS OF OLD STAKE AT CORNER. COR VAR 6-48
 - EAST ON SOUTH LINE SE 1/4 SEC 34 ON A VAR 6-55 OFFSET NORTH 11.22' AT
 - 2634.06 INTERSECTED EAST BOUNDARY LINE AT CORNER. COR VAR 7-09'
- 1870 RUGER AUG 17 REMON-62 WEST ON SOUTH LINE OF SE 1/4 SEC 35 ON A VAR 7-20 OFFSET SOUTH 26.40' OFFSET NORTH 29.7' AT
 - 2632.74 INTERSECTED QUARTER LINE 0.66' SOUTH OF QUARTER CORNER FOUND POST SURROUNDED BY STONES SET BY LOCKE AT CORNER. COR VAR 7-15
 - WEST ON SOUTH LINE OF SW 1/4 SEC 35 ON A VAR 7-20 OFFSET NORTH 18.81' AT
 - 2631.42 INTERSECTED WEST BOUNDARY LINE 13.20' NORTH OF CORNER. FOUND FENCE POST ON CORNER ALSO EAST BEARING TREE AND STUMP OF WEST BEARING TREE. COR VAR 7-13
- 1870 RUGER AUG 17 REMON-62 WEST ON SOUTH LINE OF SE 1/4 SEC 35 ON A VAR 7-20 OFFSET SOUTH 26.40' OFFSET NORTH 29.7' AT
 - 2632.74 INTERSECTED QUARTER LINE 0.66' SOUTH OF QUARTER CORNER FOUND POST SURROUNDED BY STONES SET BY LOCKE AT CORNER. COR VAR 7-15
 - WEST ON SOUTH LINE OF SW 1/4 SEC 35 ON A VAR 7-20 OFFSET NORTH 18.81' AT
 - 2631.43 INTERSECTED WEST BOUNDARY LINE 13.20' NORTH OF CORNER. FOUND FENCE POST ON CORNER ALSO EAST BEARING TREE AND STUMP OF WEST BEARING TREE. COR VAR 7-13
- 1870 RUGER AUG REMON-63 NORTH ON WEST LINE OF SW 1/4 SEC 35 ON A VAR 6-41 COULD FIND NO TRACE OF QUARTER CORNER CONTINUED LINE ON SAME VARIATION AS ABOVE GIVEN AT
 - 5319.60 INTERSECTED NORTH BOUNDARY LINE 9.9' EAST OF CORNER. FOUND OLD STAKE ON CORNER AND STUMPS OF BEARING TREES. COR VAR 6-47
 - ESTABLISHED WEST QUARTER CORNER OF SEC 35 AT A POINT IN A TRUE LINE BETWEEN AND EQUI-DISTANT FROM THE SW AND NW CORNERS OF SAID SECTION. IT BEING DISTANT FROM EACH 2659.8'
- 1902 UNKOWN VOL 3 PG 11 MON. 2635.5 TO MON @ S 1/4 COR SEC 35

SEAL
Emboss

*David
Bauer
Nov 10, 2011*

UN629 SWCORSEC35

- 1966 BATTERMAN VOL 4 PG 296 C. SHIMEALL DUG & FD CUT
STONE MON.
- 1976 BARNES VOL 5 PG 215 [NE COR SEC 3?] FD LIMESTONE
3X6X14 SURROUNDED BY 4 HH AND TIED WITH ORANGE
FLAGING. SET ALUM AT THE SW COR SEC 35. NW COR SEC 2
MAGNOLIA TWP. SET CI 1.5 DEEP ON LINE WITH SW COR SEC
35 & S 1/4 COR SEC 35. CI IS 60.04 WEST OF S 1/4 COR SEC
35. REF. SAME. ALUM IS 4' EAST OF N/S FENCE TO THE
NORTH & ON NORTH SIDE OF E/W FENCE
- 1976 SCHROEDER CSM 6 PG 91 CALLS FOR THE NW COR SEC 2
MAGNOLIA TWP BUT STATES NOTHING ABOUT MON. CALLS
FOR SW COR SEC 35 AS BEING 60.06 EAST OF THE NW COR
SEC 2 MAGNOLIA TWP. EASTERLY 1342.76 FROM THE NW
COR SEC 2 TO THE NW COR OF THE CSM.
- 1985 BARNES VOL 6 PG 338 SHOWS RECORD DISTANCES
- 1987 SCHROEDER #13114 STATES NOTHING ABOUT NW COR SEC
2 T3N R10E. SHOWS AS WEST OF SEC 35. NW SEC 2 EAST
1342.76 TO PIN OF NE COR SURVEY
- 1989 BARNES VOL 6 PG 400 INFORMATION PROVIDED BY KARNs.
FD ALUM. NO-28-59W 2663.93 TO CUT STONE @ E 1/4 COR
SEC 34 & S89-21-21W 2639.17 TO ALUM @ S 1/4 COR SEC
34
- 1995 BARNES Z-15(1) SHOWS RECORD JOG DISTANCE FROM CI @
NE COR SEC 3 TO THE WEST. S89-02-12W 2642.17 TO N 1/4
COR SEC 3
- 1995 BARNES A-15 SAME AS Z-15(1)
- 2000 LATHROP #7581 FD ALUM. MON S89-23-50W 2639.78
TO ALUM MON @ S 1/4 COR SEC 34
- 2007 COMBS CSM VOL 31 PG 86 ALUM. MON. N89-46-40E
2634.65 TO LS @ S 1/4 COR SEC 35

FD ALUM, CI, & REFERENCE PIPES

C) Was the corner restored through acceptance of (1) an obliterated evidence location, or, (2) a found perpetuated location?

ACCEPTED FD MONUMENTS.

D) Describe any material discrepancy between the location of the corner as restored or reestablished and the location of that corner as previously restored or reestablished by distance and direction. Show the discrepancy on the plan view drawing under (a), above. Show the distances between the corner as previously restored or reestablished and (1) the corner as restored or reestablished, and (2) to at least 4 of the witness monuments shown on the drawing in (a), above.

NONE

(E) Was the corner reestablished through lost corner proportionate methods? If so, show the method, including the directions and distances to other public land survey corners used as evidence or used for proportioning the corner location.

NO

I, **Donald Barnes**, hereby certify that the corner location as identified by the corner code index was determined by me under my direction and control and that this U.S. Public Land Survey Monument Record is correct and complete to the best of my knowledge and belief.

Donald Barnes

Barnes

Nov 10, 2011

SHEET 3 OF 4

CORNER CODE

Z-17

A.E. 7.08 REQUIREMENT

E 1/4 COR
SEC 34

S 1/4 COR
SEC 34

1833 HARRISON 2640
1870 RUGER VAR6-47 2659.80
1989 KARNES 2663.93
N0-07-58E 2663.85

S 1/4 COR
SEC 35

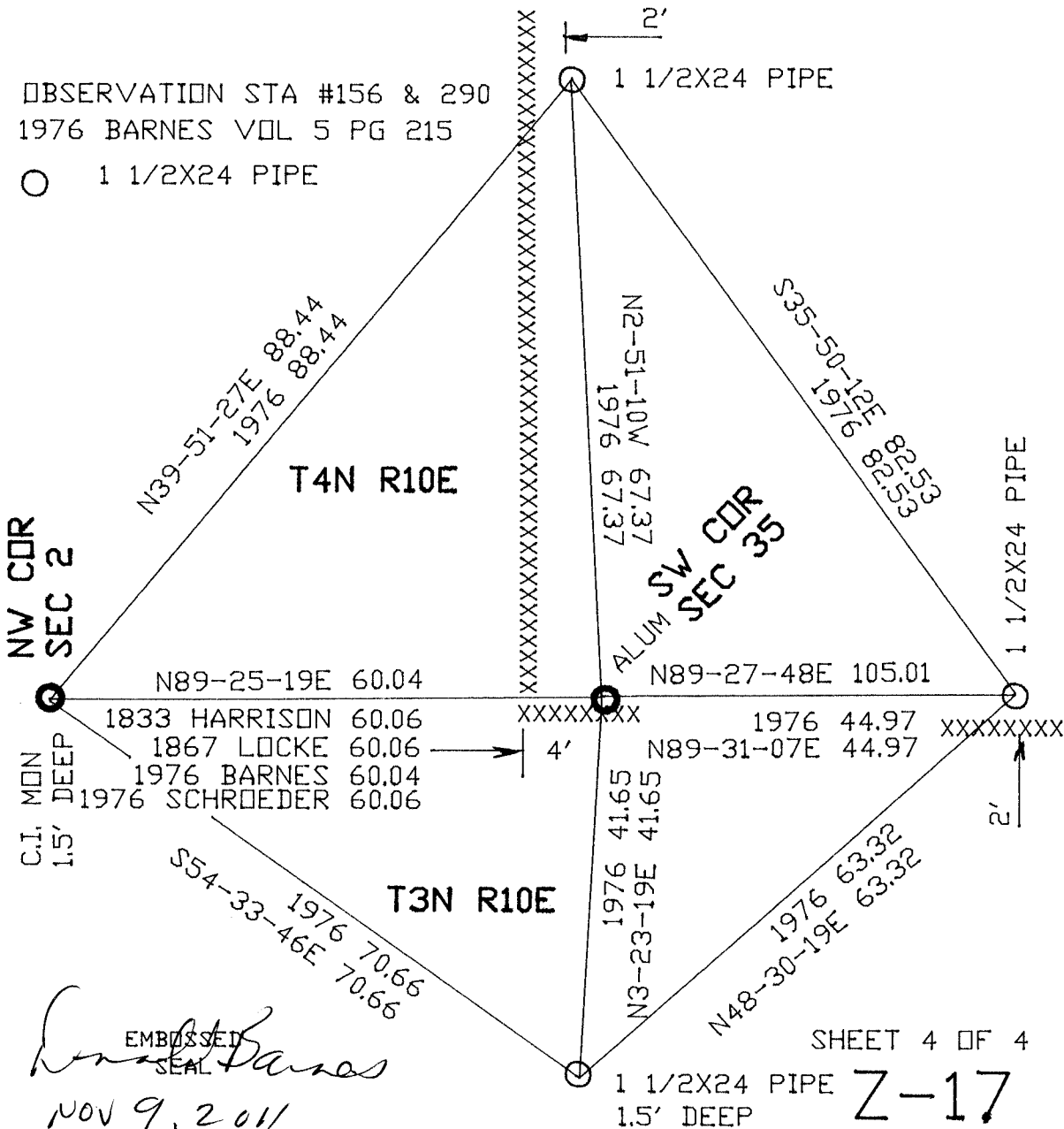
N89-59-27E 2639.86
2000 LATHROP 2639.78
1995 BARNES 2639.88
1989 KARNES 2639.17
1870 RUGER 2634.06
1833 BRINK 2640.00

SW COR
SEC 35

N89-48-30E 2633.78
2007 COMBS 2634.65
1902 KERCH 2635.5
1870 RUGER VAR7-13 2631.42
1867 LOCKE VAR7-25 2628.12
1833 BRINK 2640.00

OBSERVATION STA #156 & 290
1976 BARNES VOL 5 PG 215

○ 1 1/2X24 PIPE



EMBOSSED SEAL
Donald Barnes
NOV 9, 2011

SHEET 4 OF 4

1 1/2X24 PIPE
1.5' DEEP
Z-17