

U.S. PUBLIC LAND SURVEY MONUMENT RECORD

For Public Land Survey Corners in the

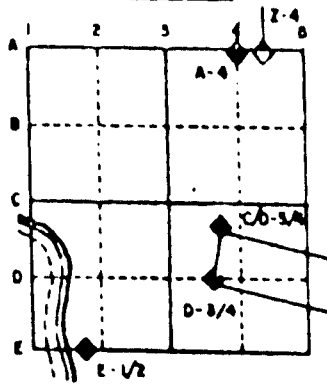
T. A N., R. 10 E.

CORNER CODE INDEX

	1	2	3	4	5	6	7	8	9	10	11	12	13	14	15	16	17	18	19	20	21	22	23	24	25
A																									
B																									
C	8																								
D																									
E																									
F																									
G																									
H																									
I																									
J																									
K																									
L																									
M																									
N																									
O																									
P																									
Q																									
R																									
S																									
T																									
U																									
V																									
W																									
X																									
Y																									
Z																									

PLACE MONUMENT SYMBOL (◆) AT PROPER LOCATION ON ABOVE INDEX

EXAMPLE



UNION TWP
ROCK COUNTY WI

IF AVAILABLE
STATE PLANE COORDINATES

North (Y) _____ Elev. (Z) _____
 East (X) _____ Zone _____
 Hor. Datum _____ Vert. Datum _____

◆ CORNER MONUMENT

○ WITNESS MONUMENT

BEARINGS ARE BASED ON:

(B) Describe any record evidence, monument evidence, occupational evidence, testimonial evidence or any other material evidence you considered, and whether the monument was found or placed.

1870 RUGER REMONUMENTATION FIELD NOTES - FOUND REMAINS OF OLD STAKE AT CORNER. ALSO FOUND REMAINS OF BOTH STUMPS OF BEARING TREES. COR. VAR 7-00

1900 BROWN VOL 2 PG 518 FOUND MONUMENT.

FOUND CUT LIMESTONE 0.5' DEEP. PLACED CARSONITE POST AT NE CORNER OF STONE & 2 MAGNETS ON SOUTH SIDE.

C) Was the corner restored through acceptance of (1) an obliterated evidence location, or, (2) a found perpetuated location?

ACCEPTED FOUND PERPETUATED LOCATION.

D) Describe any material discrepancy between the location of the corner as restored or reestablished and the location of that corner as previously restored or reestablished by distance and direction. Show the discrepancy on the plan view drawing under (a), above. Show the distances between the corner as previously restored or reestablished and (1) the corner as restored or reestablished, and (2) to at least 4 of the witness monuments shown on the drawing in (a), above.

(E) Was the corner reestablished through lost corner proportionate methods? If so, show the method, including the directions and distances to other public land survey corners used as evidence or used for proportioning the corner location.

NO

I, Donald Barnes, hereby certify that the corner points as identified by the corner code index were, in a field survey on, Sep 7, 1991, established, re-established, monumented, re-monumented, recovered or restored as expressed below and in conformance with the regulations and rules as required in the current manual of survey instructions of the United States Department of Interior, Bureau of Land Management.

seal

Donald Barnes
June 23, 1994

COUNTY SURVEYOR FILING DATA

Date of computer entry _____

Date microfilmed _____

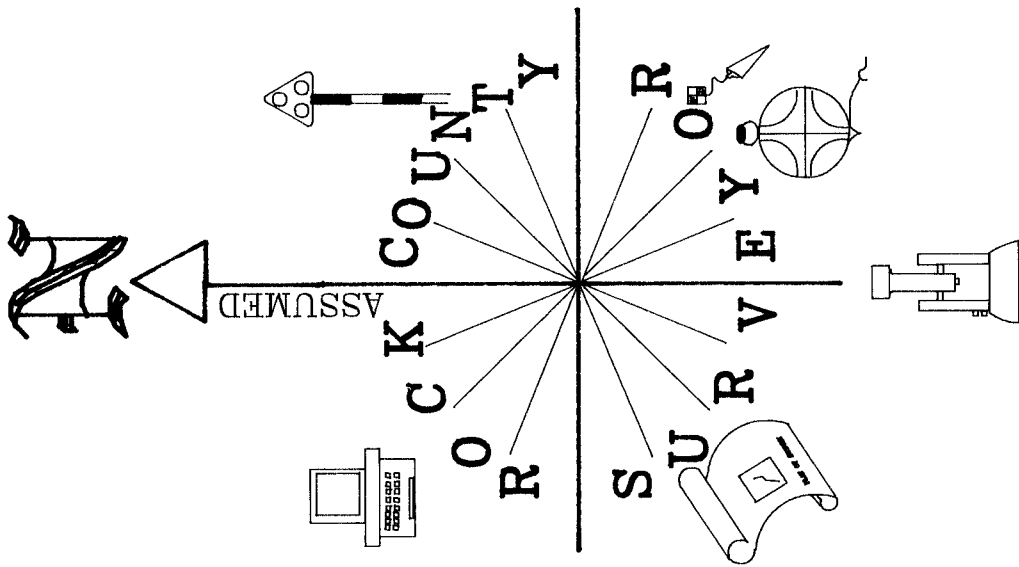
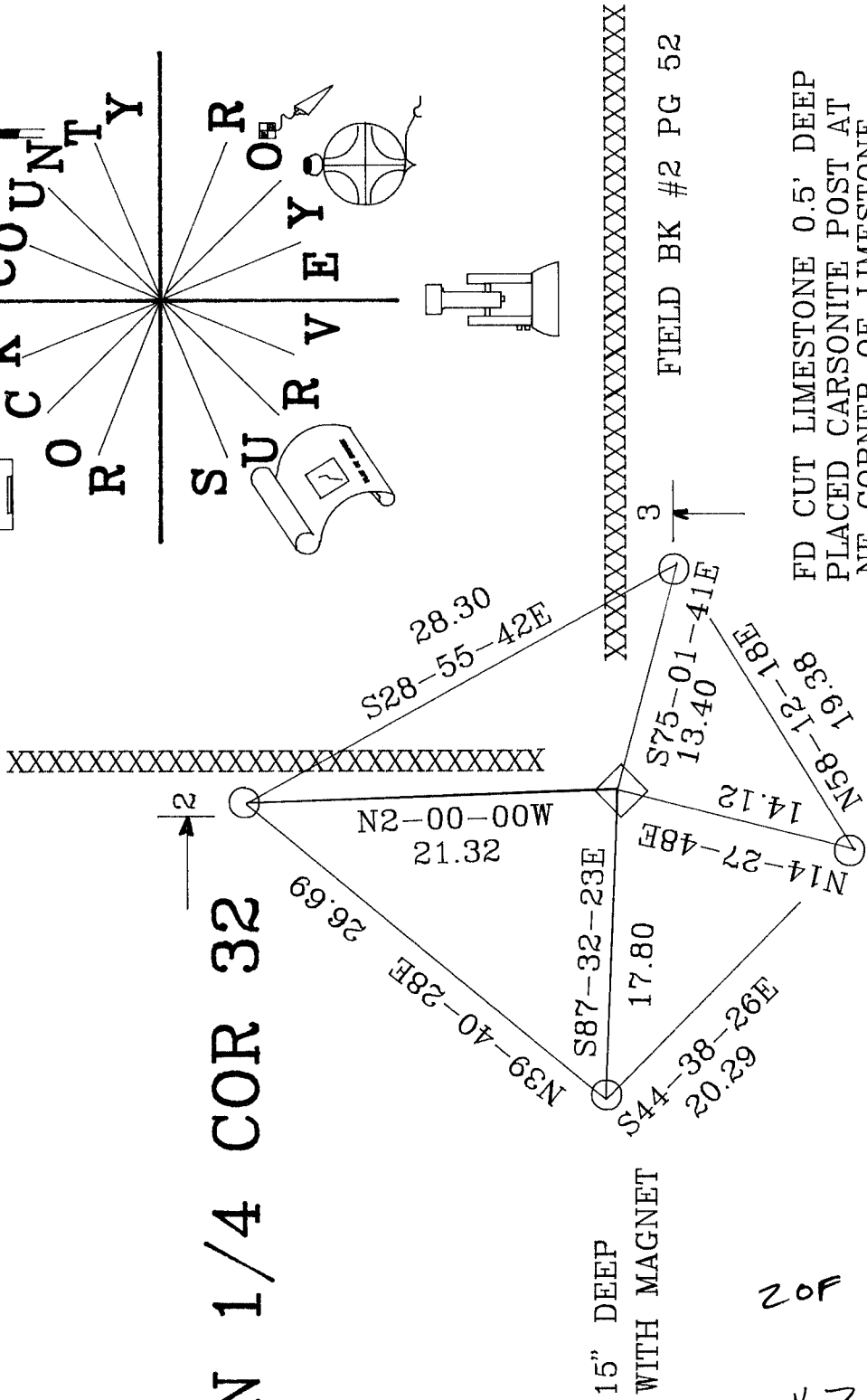
Number of included sheets 1
CORNER CODE

AFFIX YOUR LAND SURVEYOR SEAL

1 of 2
✓

Ronald Barnes
June 23, 1994

N 1/4 COR 32



FD CUT LIMESTONE 0.5' DEEP
PLACED CARSONITE POST AT
NE CORNER OF LIMESTONE.
& 2 MAGNETS ON SOUTH SIDE.

○ 3/4X24 REROD WITH
PLASTIC CAP.

15" DEEP
WITH MAGNET

2 OF 2

✓