

Paper weight-110# (minimum)

Black nonfading ink required

U.S. PUBLIC LAND SURVEY MONUMENT RECORD

For Public Land Survey Corners In:
T. 4 N. R. 10 E. 4th P.M.

WI ADMINISTRATIVE CODE A-E 7.08 REQUIREMENT
REV 10/23/2004 USMONREC.DWG

CORNER CODE INDEX

UNION TWP

ROCK COUNTY WI

IF AVAILABLE
ROCK COUNTY COORDINATES PREFERRED

A	1	2	3	4	5	6	7	8	9	10	11	12	13	14	15	16	17	18	19	20	21	22	23	24	25	A
B																										B
C																										C
D																										D
E																										E
F																										F
G																										G
H																										H
J																										J
K																										K
L																										L
M																										M
N																										N
O																										O
P																										P
Q																										Q
R																										R
S																										S
T																										T
U																										U
V																										V
W																										W
X																										X
Y																										Y
Z																										Z

North _____ Elev. _____

East _____

Hor. Datum _____ Vert. Datum _____

LATITUDE _____ ELLIPS. HT. _____

LONGITUDE _____

NAD83(91) _____ NETWORK ADJ. YR 2010 _____

GPS (X) _____ TRAVERSE (X) X

BASED ON THE FOLLOWING CONTROL:

PLACE MONUMENT SYMBOL **◆** AT PROPER LOCATION ON ABOVE INDEX

◆ CORNER MONUMENT ○ WITNESS MONUMENT

(a) BEARINGS ARE BASED ON: ROCK COUNTY PROJECTION

FIELD BOOK _____ PAGE # _____
OR OBSERVATION SHEET _____

SHEET 1 OF 3

SHOW A PLAN VIEW DRAWING DEPICTING THE CORNER MONUMENT AND SURROUNDING PHYSICAL FEATURES, INCLUDING THE EXCAVATION AREA AND DEPTH.

PLANNING & ZONING COMMITTEE ADOPTED THIS FORM ON 12/2/1982

CORNER CODE 2-19

UN630 S1/4CORSEC35

(B) Describe any record evidence, monument evidence, occupational evidence, testimonial evidence or any other material evidence you considered, and whether the monument was found or placed.

- 1833 BRINK & MULLETT (SEP 12) T4N R10E
WEST ON SOUTH SIDE OF SECTION 35 (PG107)
1351.02 BURR OAK 16
2640.00 SET QUARTER SECTION POST BURR OAK 10
N53E 52.80', BURR OAK 10 N30 1/2W 64.68'
3079.56 BURR OAK 10
5016.00 ENTER MARSH OR CREEK BOTTOM
5280.00 SET POST FOR CORNER TO SECTIONS 34 &
35. BURR OAK 8 N19W 110.88', BURR OAK 14
151.14'. LAND ROLLING SECOND RATE BURR
OAK ? OAK HIGH RED ROOT.
- 1867 LOCKE VOL 1 PG 303 & #5274 CORNER LOST & RESET
FROM CORNERS OF SEC . SET STAKE SURROUNDED BY 1
HH & 2 LS (HH ON NORTH) VAR 7-25 2628.12 TO SW & SE
CORNERS OF SEC 35.
- 1870 RUGER AUG 17 REMON-62 WEST ON SOUTH LINE OF SE 1/4
SEC 35 ON A VAR 7-20 OFFSET SOUTH 26.40' OFFSET
NORTH 29.7' AT
2632.74 INTERSECTED QUARTER LINE 0.66' SOUTH OF
QUARTER CORNER FOUND POST SURROUNDED
BY STONES SET BY LOCKE AT CORNER. COR
VAR 7-15
WEST ON SOUTH LINE OF SW 1/4 SEC 35
ON A VAR 7-20 OFFSET NORTH 18.81' AT
2631.42 INTERSECTED WEST BOUNDARY LINE 13.20'
NORTH OF CORNER. FOUND FENCE POST ON
CORNER ALSO EAST BEARING TREE AND
STUMP OF WEST BEARING TREE. COR VAR 7-
13
- 1902 UNKNOWN VOL 3 PG 11 MON. USED TO SUBDIVIDE SEC
35. 101 EAST OF RD. 2635.5 TO SW COR SEC 35
- 1976 BARNES VOL 5 PG 216 & FB #1 PG 16 MAGNOLIA TWP. FD
CUT STONE & REF SAME. 1' NORTH OF E/W FENCE ON
NORTH SIDE OF COON ISLAND RD. & ABOUT 88 NE OF
CENTER OF TRACKS.
- 1998 KNUDSON #8178 SQUARE STONE. NO-06-11W 5317.51
TO SQUARE STONE @ N 1/4 COR SEC 35.
- 1999 KNUDSON #7227 REPEAT OF 1998 #8178
- 2007 COMBS #15666 FD CUT STONE MON. S89-46-40W 47.43
TO EAST RAILROAD R/W; THENCE N27-41-25W 7.51 TO PIN.
- 2007 COMBS CSM VOL 31 PG 86 LS N89-41-42E 2634.44 TO LS
@ SE COR SEC 35 & S89-46-40W 2634.65 TO ALUM @ SW
COR SEC 35

FD CUT LIMESTONE 0.8' DEEP. PUT MAGNET ON EAST & WEST SIDE OF STONE. BASED ON COMB'S NAIL IN UP, THE ELEVATION OF THE LS IS 905.8'. ESTABLISHED N 1/4 COR SEC 2 MAGNOLIA TWP AT MIDPOINT BETWEEN THE NE & NW CORNERS OF SEC 2, WHICH IS S89-48-34W 29.36 FROM THE S 1/4 COR SEC 35. DID NOT PLACE MONUMENT BECAUSE IT FALLS IN THE ENTRANCE TO THE POWER STATION.

C) Was the corner restored through acceptance of (1) an obliterated evidence location, or, (2) a found perpetuated location?

ACCEPTED FD CUT L.S.

Dwight Barnes
Seal
Sep 2 2011
Emboss

SHEET 1 OF 3

CORNER CODE Z-19

UN630 S1/4CORSEC35

D) Describe any material discrepancy between the location of the corner as restored or reestablished and the location of that corner as previously restored or reestablished by distance and direction. Show the discrepancy on the plan view drawing under (a), above. Show the distances between the corner as previously restored or reestablished and (1) the corner as restored or reestablished, and (2) to at least 4 of the witness monuments shown on the drawing in (a), above.

NONE

(E) Was the corner reestablished through lost corner proportionate methods? If so, show the method, including the directions and distances to other public land survey corners used as evidence or used for proportioning the corner location.

YES. IN 1867 LOCKE DECLARED THE CORNER LOST & ESTABLISHED IT MIDWAY & ON LINE WITH THE SW & SE CORNERS OF SEC 35.

I, **Donald Barnes**, hereby certify that the corner location as identified by the corner code index was determined by me under my direction and control and that this U.S. Public Land Survey Monument Record is correct and complete to the best of my knowledge and belief.

Seal
Donald Barnes
Emboss
Sep 2 2011

SHEET 2 OF 3

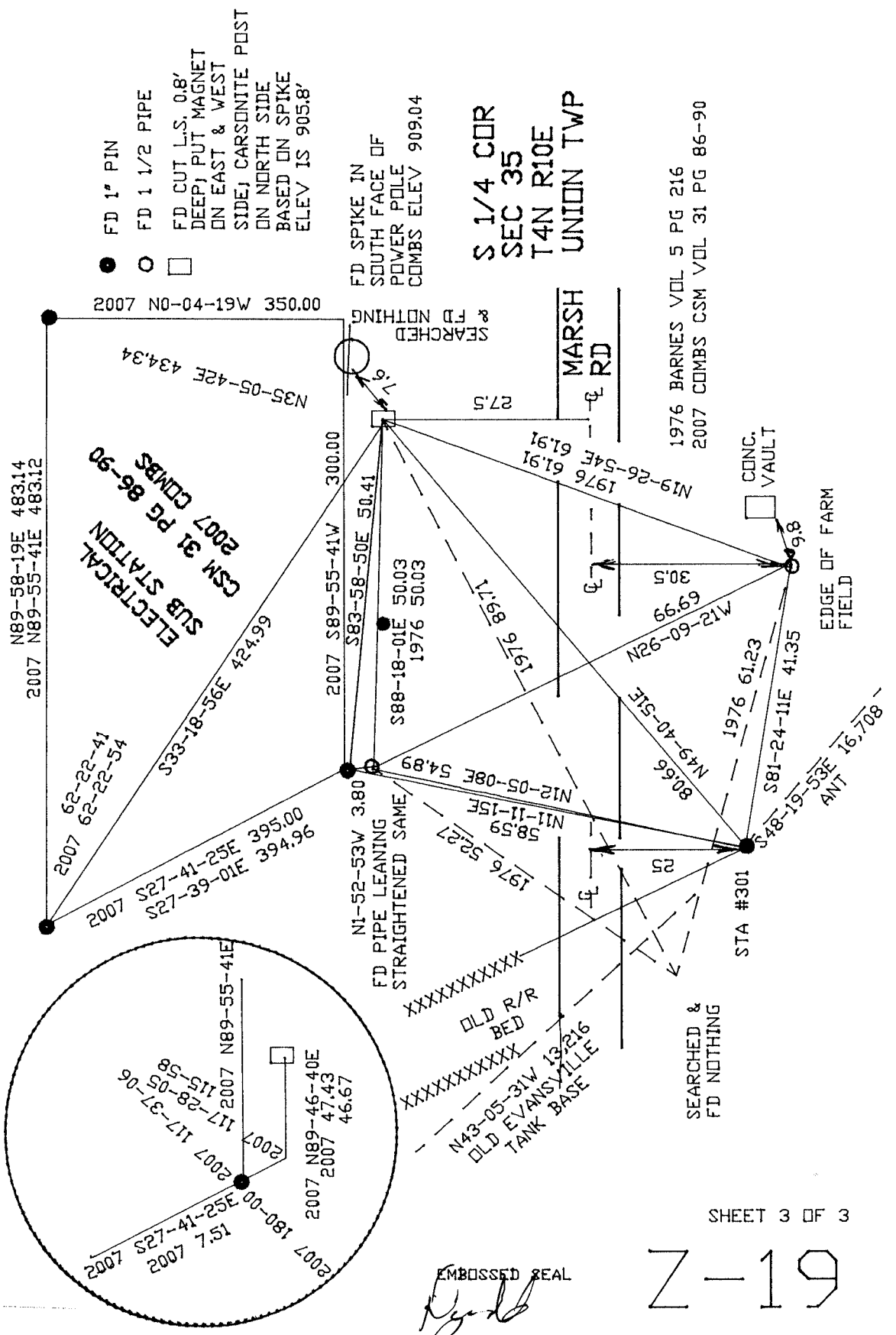
CORNER CODE **Z-19**

A.E. 7.08 REQUIREMENT

5268.95
 N89-47-16E 5268.95
 2007 COMBS CSM31-86 5269.09
 1870 RUGER REMON 5264.16
 1867 LOCKE 1-303 VAR 7-25 5256.24
 1833 BRINK 5280.00

N89-45-59E 2635.13
 N89-41-42E 2634.44
 1870 RUGER REMON VAR7-15 2632.74
 1867 LOCKE 1-303 VAR7-25 2628.12
 1833 BRINK 2640.00

S89-48-34W 2633.82
 S89-46-40W 2634.65
 1902 KERCH 3-11 2635.5X
 1870 RUGER REMON VAR7-13 2631.42
 1867 LOCKE 1-303 VAR7-25 2628.12
 1833 BRINK 2640.00



- FD 1" PIN
- FD 1 1/2" PIPE
- FD CUT L.S. 0.8' DEEP; PUT MAGNET ON EAST & WEST SIDE; CARSONITE POST ON NORTH SIDE BASED ON SPIKE ELEV IS 905.8'

S 1/4 COR
 SEC 35
 T4N R10E
 UNION TWP

1976 BARNES VOL 5 PG 216
 2007 COMBS CSM VOL 31 PG 86-90

Z-19

EMBOSSED SEAL
[Signature]
 Barnes
 Sep 2, 2011