

# PUBLIC LAND SURVEY MONUMENT RECORD

For Public Land Survey Corners in the

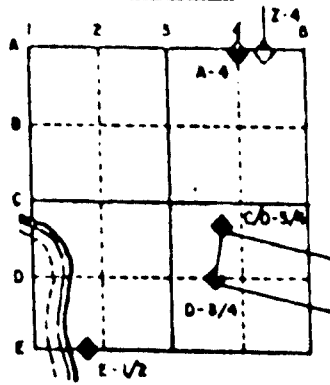
T. 4 N., R. 10 E.

## CORNER CODE INDEX

	1	2	3	4	5	6	7	8	9	10	11	12	13	14	15	16	17	18	19	20	21	22	23	24	25
A																									
B																									
C																									
D																									
E																									
F																									
G																									
H																									
I																									
J																									
K																									
L																									
M																									
N																									
O																									
P																									
Q																									
R																									
S																									
T																									
U																									
V																									
W																									
X																									
Y																									
Z																									

PLACE MONUMENT SYMBOL (◈) AT PROPER LOCATION ON ABOVE INDEX

### EXAMPLE



UNION TWP  
ROCK COUNTY WI

IF AVAILABLE

STATE PLANE COORDINATES

North (Y) \_\_\_\_\_ Elev. (Z) \_\_\_\_\_  
 East (X) \_\_\_\_\_ Zone \_\_\_\_\_  
 Hor. Datum \_\_\_\_\_ Vert. Datum \_\_\_\_\_

◈ CORNER MONUMENT

○ WITNESS MONUMENT

BEARINGS ARE BASED ON:

(B) Describe any record evidence, monument evidence, occupational evidence, testimonial evidence or any other material evidence you considered, and whether the monument was found or placed.

1870 RUGER REMONUMENTATION FIELD NOTES - FOUND STUMPS OF BOTH BEARING TREES. ESTABLISHED CORNER FROM STUMPS OF BEARING TREES. COR. VAR 7-38. PLACED CUT LIMESTONE.

1900 BROWN VOL 2 PG 518 FOUND MONUMENT.

1906 KERCH VOL 3 PG 36 FOUND MONUMENT.

1938 SUNNY VOL 3 PG 373 FOUND STONE MONUMENT.

FOUND CUT LIMESTONE. PLACED MAGNETS ABOUT 15" DEEP NEXT TO LIMESTONE.

C) Was the corner restored through acceptance of (1) an obliterated evidence location, or, (2) a found perpetuated location?

ACCEPTED FOUND PERPETUATED LOCATION.

D) Describe any material discrepancy between the location of the corner as restored or reestablished and the location of that corner as previously restored or reestablished by distance and direction. Show the discrepancy on the plan view drawing under (a), above. Show the distances between the corner as previously restored or reestablished and (1) the corner as restored or reestablished, and (2) to at least 4 of the witness monuments shown on the drawing in (a), above.

(E) Was the corner reestablished through lost corner proportionate methods? If so, show the method, including the directions and distances to other public land survey corners used as evidence or used for proportioning the corner location.

NO

I, Donald Barnes, hereby certify that the corner points as identified by the corner code index were, in a field survey on, Sep 7, 1991, established, re-established, monumented, re-monumented, recovered or restored as expressed below and in conformance with the regulations and rules as required in the current manual of survey instructions of the United States Department of Interior, Bureau of Land Management.

seal  
*Donald Barnes*  
June 24, 1994

COUNTY SURVEYOR FILING DATA

Date of computer entry \_\_\_\_\_

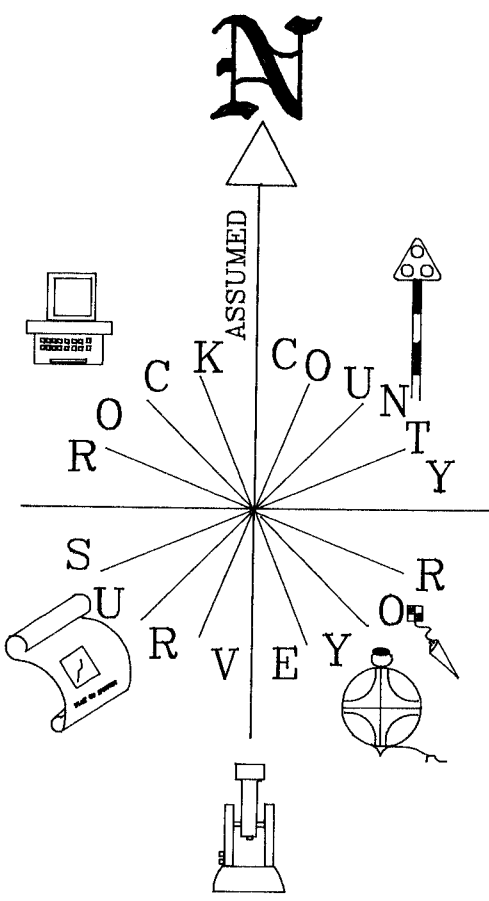
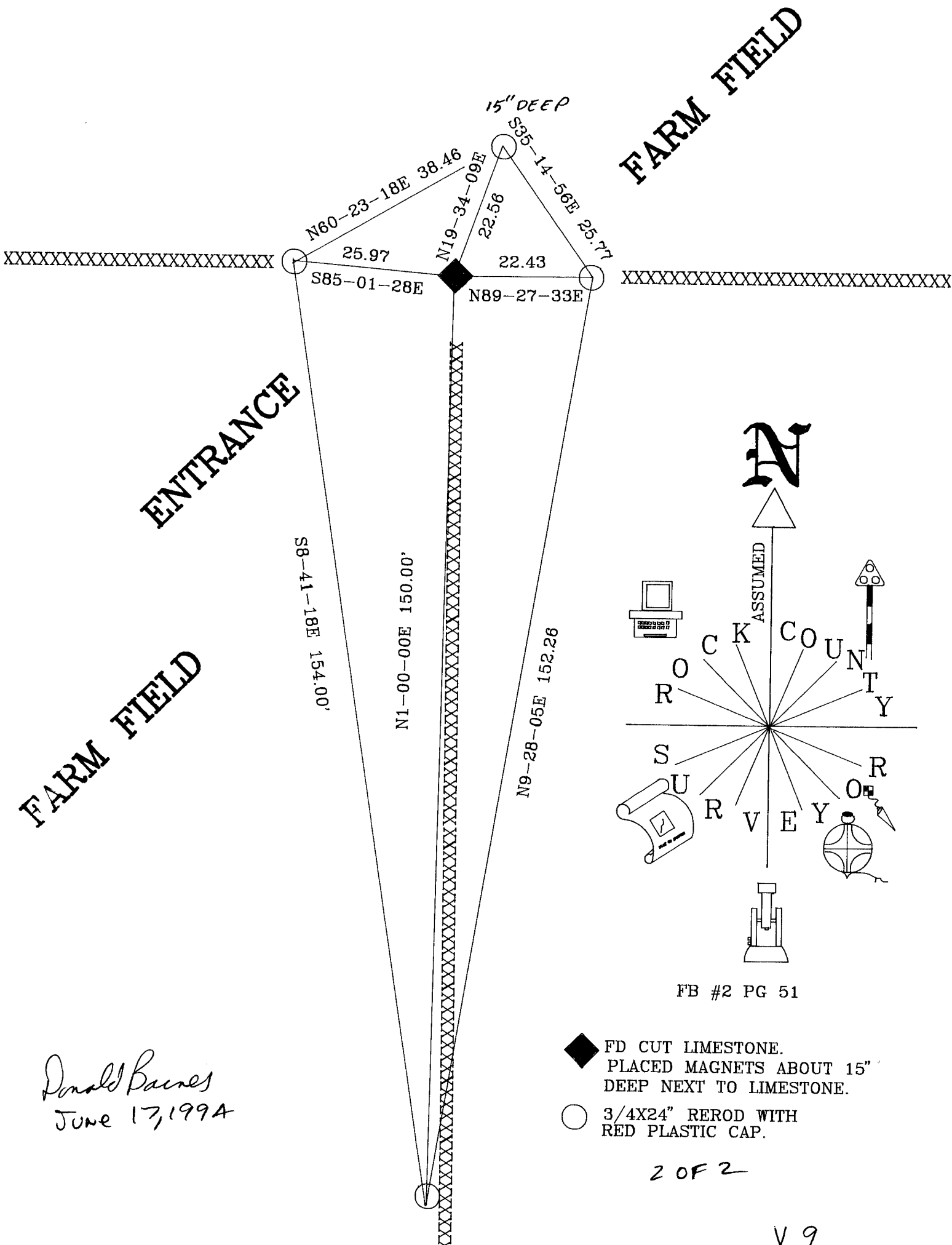
Date microfilmed \_\_\_\_\_

Number of included sheets 1  
CORNER CODE

AFFIX YOUR LAND SURVEYOR SEAL

10F 2

19



FB #2 PG 51

Donald Barnes  
June 17, 1994

- ◆ FD CUT LIMESTONE.  
PLACED MAGNETS ABOUT 15" DEEP NEXT TO LIMESTONE.
- 3/4X24" REROD WITH RED PLASTIC CAP.

2 OF 2

V 9