

Paper weight-110# (minimum)      Black nonfading ink required

# U.S. PUBLIC LAND SURVEY MONUMENT RECORD

For Public Land Survey Corners In:  
**T. 4 N. R. 10 E. 4th P.M.**  
 CORNER CODE INDEX

WI ADMINISTRATIVE CODE A-E 7.08 REQUIREMENT  
 REV 10/23/2004      USMONREC.DWG

**UNION** TWP  
**ROCK COUNTY WI**

IF AVAILABLE  
 ROCK COUNTY COORDINATES PREFERRED

|   |   |   |   |   |   |   |   |   |   |    |    |    |    |    |    |    |    |    |    |    |    |    |    |    |    |   |
|---|---|---|---|---|---|---|---|---|---|----|----|----|----|----|----|----|----|----|----|----|----|----|----|----|----|---|
| A | 1 | 2 | 3 | 4 | 5 | 6 | 7 | 8 | 9 | 10 | 11 | 12 | 13 | 14 | 15 | 16 | 17 | 18 | 19 | 20 | 21 | 22 | 23 | 24 | 25 | A |
| B |   | 6 |   |   |   | 5 |   |   |   | 4  |    |    |    | 3  |    |    | 2  |    |    |    | 1  |    |    |    |    | B |
| C |   |   |   |   |   |   |   |   |   |    |    |    |    |    |    |    |    |    |    |    |    |    |    |    |    | C |
| D |   |   |   |   |   |   |   |   |   |    |    |    |    |    |    |    |    |    |    |    |    |    |    |    |    | D |
| E |   |   |   |   |   |   |   |   |   |    |    |    |    |    |    |    |    |    |    |    |    |    |    |    |    | E |
| F |   |   |   |   |   |   |   |   |   |    |    |    |    |    |    |    |    |    |    |    |    |    |    |    |    | F |
| G |   |   |   |   |   |   |   |   |   |    |    |    |    |    |    |    |    |    |    |    |    |    |    |    |    | G |
| H |   |   |   |   |   |   |   |   |   |    |    |    |    |    |    |    |    |    |    |    |    |    |    |    |    | H |
| J |   |   |   |   |   |   |   |   |   |    |    |    |    |    |    |    |    |    |    |    |    |    |    |    |    | J |
| K |   |   |   |   |   |   |   |   |   |    |    |    |    |    |    |    |    |    |    |    |    |    |    |    |    | K |
| L |   |   |   |   |   |   |   |   |   |    |    |    |    |    |    |    |    |    |    |    |    |    |    |    |    | L |
| M |   |   |   |   |   |   |   |   |   |    |    |    |    |    |    |    |    |    |    |    |    |    |    |    |    | M |
| N |   |   |   |   |   |   |   |   |   |    |    |    |    |    |    |    |    |    |    |    |    |    |    |    |    | N |
| O |   |   |   |   |   |   |   |   |   |    |    |    |    |    |    |    |    |    |    |    |    |    |    |    |    | O |
| P |   |   |   |   |   |   |   |   |   |    |    |    |    |    |    |    |    |    |    |    |    |    |    |    |    | P |
| Q |   |   |   |   |   |   |   |   |   |    |    |    |    |    |    |    |    |    |    |    |    |    |    |    |    | Q |
| R |   |   |   |   |   |   |   |   |   |    |    |    |    |    |    |    |    |    |    |    |    |    |    |    |    | R |
| S |   |   |   |   |   |   |   |   |   |    |    |    |    |    |    |    |    |    |    |    |    |    |    |    |    | S |
| T |   |   |   |   |   |   |   |   |   |    |    |    |    |    |    |    |    |    |    |    |    |    |    |    |    | T |
| U |   |   |   |   |   |   |   |   |   |    |    |    |    |    |    |    |    |    |    |    |    |    |    |    |    | U |
| V |   |   |   |   |   |   |   |   |   |    |    |    |    |    |    |    |    |    |    |    |    |    |    |    |    | V |
| W |   |   |   |   |   |   |   |   |   |    |    |    |    |    |    |    |    |    |    |    |    |    |    |    |    | W |
| X |   |   |   |   |   |   |   |   |   |    |    |    |    |    |    |    |    |    |    |    |    |    |    |    |    | X |
| Y |   |   |   |   |   |   |   |   |   |    |    |    |    |    |    |    |    |    |    |    |    |    |    |    |    | Y |
| Z |   |   |   |   |   |   |   |   |   |    |    |    |    |    |    |    |    |    |    |    |    |    |    |    |    | Z |

1 2 3 4 5 6 7 8 9 10 11 12 13 14 15 16 17 18 19 20 21 22 23 24 25  
 PLACE MONUMENT SYMBOL **◆** AT PROPER LOCATION ON ABOVE INDEX

North \_\_\_\_\_ Elev. \_\_\_\_\_

East \_\_\_\_\_

Hor. Datum \_\_\_\_\_ Vert. Datum \_\_\_\_\_

LATITUDE \_\_\_\_\_ ELLIPS. HT. \_\_\_\_\_

LONGITUDE \_\_\_\_\_

NAD83(91) \_\_\_\_\_ NETWORK ADJ. YR 2010 \_\_\_\_\_

GPS (X) \_\_\_\_\_ TRAVERSE (X) X

BASED ON THE FOLLOWING CONTROL:  
 \_\_\_\_\_

**◆ CORNER MONUMENT**

**○ WITNESS MONUMENT**

BEARINGS ARE BASED ON: ROCK COUNTY PROJECTION

FIELD BOOK \_\_\_\_\_ PAGE # \_\_\_\_\_  
 OR OBSERVATION SHEET \_\_\_\_\_

SHEET 1 OF 3

SHOW A PLAN VIEW DRAWING DEPICTING THE CORNER MONUMENT AND SURROUNDING PHYSICAL FEATURES, INCLUDING THE EXCAVATION AREA AND DEPTH.

PLANNING & ZONING COMMITTEE ADOPTED THIS FORM ON 12/2/1982

CORNER CODE E-9

UN525 NECORSEC8

(B) Describe any record evidence, monument evidence, occupational evidence, testimonial evidence or any other material evidence you considered, and whether the monument was found or placed.

1833 (NOV) HARRISON (NOV 9) T4N R10E 4<sup>TH</sup> MER. NORTH  
BETWEEN 8 & 9

13.2 ROAD S.W

2640.00 QUARTER SEC COR {BURR O 12 N54W 26.4';  
BURR O 12 N81E 27.72'

5280.00 SEC COR TO SECS 4,5,8,9 {BURR O 12 S70E  
44.88'; BURR O 10 S84W 46.2'; BURR O 10 S84W  
44.22'; BURR O 12 N28E LAND LEVEL 2ND RATE  
TIMBER ALL BURR O. UNDERGROWTH GRASS &  
WEEDS.

1833 (NOV) HARRISON (NOV 9) T4N R10E 4<sup>TH</sup> MER. EAST ON  
RAND BET 4 & 9

2640.00 TEMPY 1/4 SEC COR

5290.56 INT E BDY 26.4' S OF P LAND ROLLING 2ND  
RATE TIMBER RED & BURR O UNDERGROWTH  
GRUBS, GRASS & WEEDS

WEST COR WEST BET 4 & 9

2645.28 QUARTER SEC COR {RED O 10 S68W 53.46'; RED  
O S34E 58.08' RED O 10 & RED O 10} MARKED

5290.56 SEC COR

1833 (NOV) HARRISON (NOV 9) T4N R10E 4<sup>TH</sup> MER. NORTH  
BETWEEN 4 & 5

2640.00 QUARTER SEC COR {BURR O 18 S16W 38.94';  
BURR O 12 N78E 27.72' BURR O 18 & BURR O  
12} MARKED

5181.00 INT. NORTHERN BOUNDARY 92.4' WEST OF P  
{W.O. 12 S48E 110.22'; BURR O 18 S79W 108.9'  
W.O. 12 & BURR O 18} MARKED LAND SAME NOV  
9TH 1833

1833 (NOV) HARRISON (NOV 9) T4N R10E 4<sup>TH</sup> MER. EAST ON  
RAND. BET. 5 & 8

2640.00 TEMPY 1/4 SEC COR

5365.14 INT E BDY 66.00' N OF P LAND ROLLING 2ND  
RATE TIMBER BURR & W.O. GROWTH GRASS &  
WEEDS

WEST COR WEST BET 5 & 8

2682.57 QUARTER SEC COR. {BURR O 12 N34E 66.00";  
BURR O 11 S45W 133.98' BURR O 12 & BURR O  
11} MARKED

5365.14 INT. SEC COR

1856 CHURCH VOL 1 PG 58 STATES NOTHING ABOUT MON.

2653.20 TO E 1/4 COR SEC 8

1856 CHURCH VOL 1 PG 61 STATES NOTHING ABOUT MON.

2768.70 TO S 1/4 COR SEC 5.

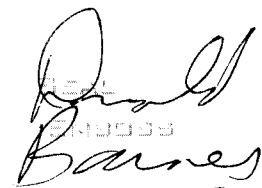
1870 RUGER AUG REMON-116 WEST ON SOUTH LINE OF SE 1/4  
SEC 4 ON A VAR 7-20; AT

2667.72 INTERSECTED QUARTER LINE 13.2' NORTH OF  
QUARTER CORNER. FOUND OLD STAKE AT  
CORNER. ALSO FOUND WEST BEARING TREE AND  
STUMP OF EAST BEARING TREE. COR VAR 7-37

WEST ON SOUTH LINE OF SW 1/4 SEC 4  
ON A VAR 7-20; OFFSET NORTH 1.32 AT

2654.52 INTERSECTED WEST BOUNDARY LINE 47.52'  
NORTH OF CORNER. FOUND OLD STAKE AT  
CORNER. ALSO FOUND STUMP OF BEARING TREE.  
COR VAR 8-20

1870 RUGER AUG REMON-120 SOUTH ON WEST LINE OF NW  
1/4 SEC 9 ON A VAR 6-35; OFFSET EAST 19.8'  
OFFSET EAST 7.26 OFFSET WEST 7.92' OFFSET  
EAST 3.30' AT

  
Barnes  
Nov 12/2011

UN525NECORSEC8

- 2654.52 INTERSECTED QUARTER LINE 8.58' EAST OF QUARTER CORNER. FOUND OLD STAKE AT CORNER. ALSO FOUND STUMPS OF BEARING TREES. COR VAR 6-53'  
SOUTH ON WEST LINE OF SW 1/4 SEC 9 ON A VAR 7-10; OFFSET EAST 11.88' AT
- 2644.62 INTERSECTED SOUTH BOUNDARY LINE 11.88' EAST OF CORNER. SEPTEMBER 8 1870
- 1870 RUGER AUG REMON-117 NORTH ON WEST LINE OF SW 1/4 SEC 4 ON A VAR 7-30; OFFSET WEST 7.92' OFFSET EAST 15.84' AT
- 2654.52 INTERSECTED QUARTER LINE 42.24' WEST OF QUARTER CORNER. FOUND LARGE STONE SURROUNDED BY SEVERAL STONES AT CORNER. ALSO FOUND STUMP OF EAST BEARING TREE. COR VAR 6-25  
NORTH ON WEST LINE OF NW 1/4 SEC 4 ON A VAR 6-50; OFFSET EAST 11.22' OFFSET WEST 15.84' AT
- 2561.46 INTERSECTED NORTH BOUNDARY LINE 1.98' EAST OF CORNER. COR VAR 6-58
- 1870 RUGER AUG REMON-120 SEPTEMBER 8, 1870  
WEST ON NORTH LINE OF NE 1/4 SEC 8 ON A VAR 7-15; OFFSET SOUTH 16.50' AT
- 2808.30 INTERSECTED QUARTER LINE 11.88' SOUTH OF QUARTER CORNER. FD OLD STAKE AT CORNER. ALSO FD STUMP OF NORTH BEARING TREE AND REMAINS OF STUMP OF SOUTH BEARING TREE. COR. VAR 7-21  
WEST ON NORTH LINE OF NW 1/4 SEC 8 ON A VAR 8-30; OFFSET SOUTH 12.54' OFFSET NORTH 50.16' AT
- 2603.04 INTERSECTED WEST BOUNDARY LINE 27.06' SOUTH OF COR. COR VAR 7-06
- 1892 BLEEDORN #5101 & VOL 2 PG 429 MON. 2808.96 TO N 1/4 COR SEC 8
- 1959 BATTERMAN VOL 4 PG 26 FD CUT STONE MON. MARKED 4,5,8,9 LEANING ON TREE RE-SET IN SAME HOLE & SURROUNDED WITH DIRT MOUND. 2' WEST OF N/S FENCE LINE & SOUTH OF E/W FENCE LINE.
- 1971 LEE VOL 4 PG 532 VOL 4 PG 26 2663.76 TO FD CUT STONE @ N 1/4 COR SEC 9
- 1976 BARNES VOL 5 PG 142 FD CUT STONE 0.5 ABOVE GROUND. @ FENCE INT. REF. SAME
- 1993 COMBS CSM VOL 16 PG 251 FD CUT STONE 2666.0X TO FD PK @ E 1/4 COR SEC 5
- 1998 COMBS #8234 FD STONE MON 2664.25 TO CI @ N 1/4 COR SEC 9

FD CUT LIMESTONE 0.4' ABOVE GRADE. THE E/W FENCE WEST OF THE L.S. AS SHOWN IN THE 1976 TIES IS GONE. BRIEFLY SEARCHED FOR THE REF PIPES & FD NOTHING. 48" DEAD TREE IS 1.7 EAST OF THE L.C.

C) Was the corner restored through acceptance of (1) an obliterated evidence location, or, (2) a found perpetuated location? ACCEPTED FD CUT LIMESTONE.

I, Donald Barnes, hereby certify that the corner location as identified by the corner code index was determined by me under my direction and control and that this U.S. Public Land Survey Monument Record is correct and complete to the best of my knowledge and belief.

*Donald Barnes*

Nov 1, 2011

SHEET 2 OF 3  
CORNER CODE E-9  
A.E. 7.08 REQUIREMENT

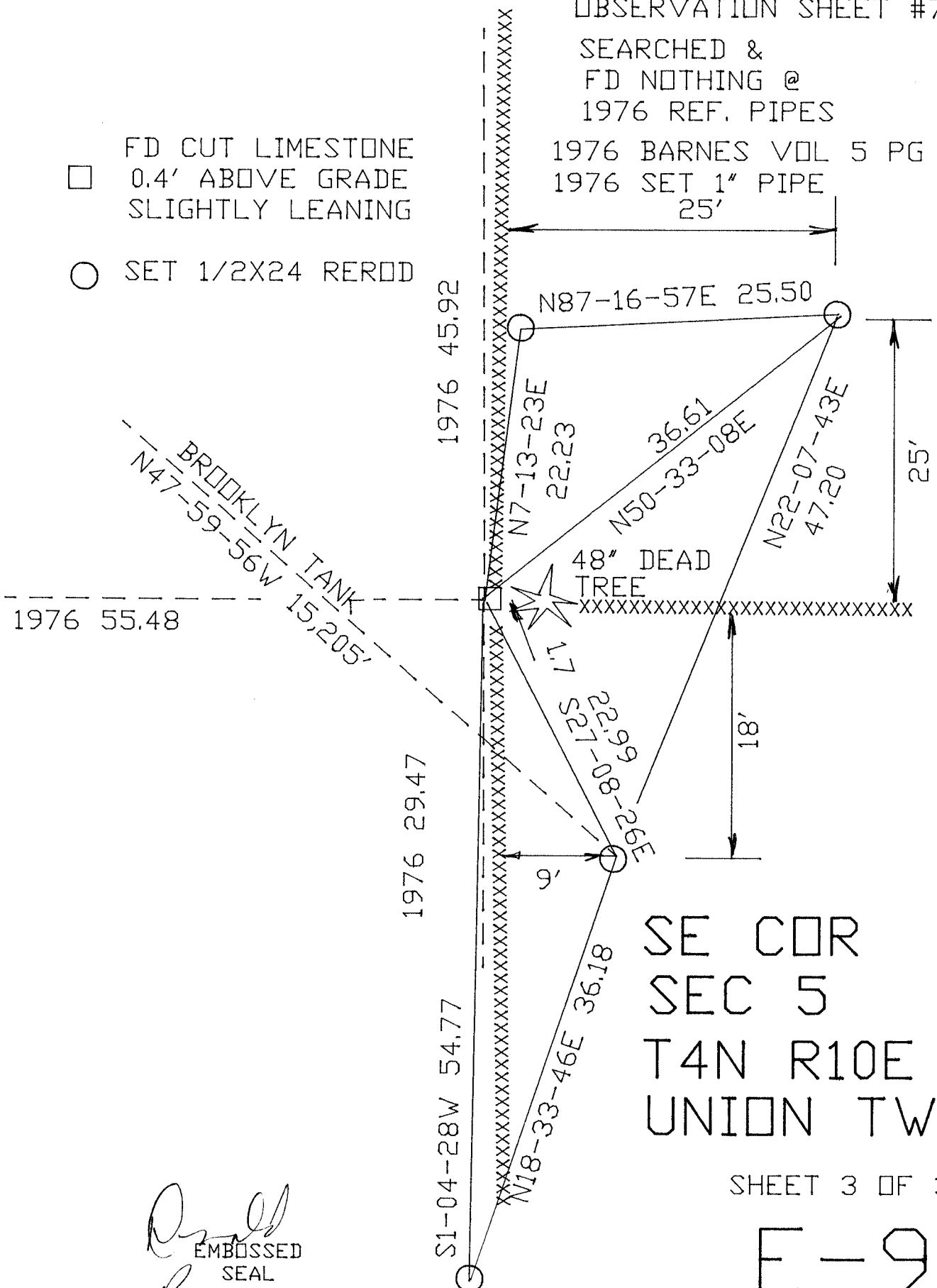
OBSERVATION SHEET #78

SEARCHED &  
FD NOTHING @  
1976 REF. PIPES

1976 BARNES VOL 5 PG 142  
1976 SET 1" PIPE  
25'

□ FD CUT LIMESTONE  
0.4' ABOVE GRADE  
SLIGHTLY LEANING

○ SET 1/2X24 REROD



SE COR  
SEC 5  
T4N R10E  
UNION TWP

SHEET 3 OF 3

E-9

*Ornd*  
EMBOSSSED  
SEAL  
*Barnes*  
NOV 9, 2011