

Paper weight-110# (minimum)

Black nonfading ink required

# U.S. PUBLIC LAND SURVEY MONUMENT RECORD

For Public Land Survey Corners In:  
T. 4 N. R. 10 E. 4th P.M.  
CORNER CODE INDEX

WI ADMINISTRATIVE CODE A-E 7.08 REQUIREMENT  
REV 10/23/2004 USMONREC.DWG

	1	2	3	4	5	6	7	8	9	10	11	12	13	14	15	16	17	18	19	20	21	22	23	24	25		
A																											A
B																											B
C																											C
D																											D
E																											E
F																											F
G																											G
H																											H
J																											J
K																											K
L																											L
M																											M
N																											N
O																											O
P																											P
Q																											Q
R																											R
S																											S
T																											T
U																											U
V																											V
W																											W
X																											X
Y																											Y
Z																											Z

UNION TWP  
**ROCK COUNTY WI**  
IF AVAILABLE  
ROCK COUNTY COORDINATES PREFERRED

North \_\_\_\_\_ Elev. \_\_\_\_\_

East \_\_\_\_\_

Hor. Datum \_\_\_\_\_ Vert. Datum \_\_\_\_\_

LATITUDE \_\_\_\_\_ ELLIPS. HT. \_\_\_\_\_

LONGITUDE \_\_\_\_\_

NAD83(91) \_\_\_\_\_ NETWORK ADJ. YR \_\_\_\_\_

GPS (X) \_\_\_\_\_ TRAVERSE (X) \_\_\_\_\_

BASED ON THE FOLLOWING CONTROL:  
\_\_\_\_\_

PLACE MONUMENT SYMBOL  AT PROPER LOCATION ON ABOVE INDEX

CORNER MONUMENT       WITNESS MONUMENT

(a)

BEARINGS ARE BASED ON: ROCK COUNTY PROJECTION

FIELD BOOK \_\_\_\_\_ PAGE # \_\_\_\_\_

OR OBSERVATION SHEET \_\_\_\_\_

SHEET 1 OF 4

SHOW A PLAN VIEW DRAWING DEPICTING THE CORNER MONUMENT AND SURROUNDING PHYSICAL FEATURES, INCLUDING THE EXCAVATION AREA AND DEPTH.

PLANNING & ZONING COMMITTEE ADOPTED THIS FORM ON 12/2/1982

CORNER CODE A-19

UN510 N1/4CORSEC2

(B) Describe any record evidence, monument evidence, occupational evidence, testimonial evidence or any other material evidence you considered, and whether the monument was found or placed.

- 1833 BRINK SOUTH BOUNDARY OF T5N R10E WEST ON SOUTH SIDE SECTION 35
- 33.66 W. OAK 18  
2343.0 W. OAK 16  
2640.00 SET QUARTER SECTION POST BURR OAK 12 N17E 35.64'; BUR OAK 14 N58W 53.46'  
3564.0 A STREAM RAPID & PURE 10.56' NE  
3781.8 BURR OAK 15  
5280.00 SET POST CORNER TO SECTIONS 34 & 35 BURR OAK 10 N1 1/2W 29.7'; BURR OAK 14 N73W 52.14' LAND ROLLING GOOD SECOND RATE BURR & W. OAK RED ROOT ROSE WILLOW GRASS & C
- 1870 RUGER AUG REMON-108 WEST ON NORTH LINE OF NE 1/4 SEC 2 ON A VAR 7-40; INTERSECTED QUARTER LINE OF SECTION 35 T5 R10 8.91' SOUTH OF QUARTER CORNER OF SAID SECTION. COR VAR 7-29' CONTINUED WEST ON NORTH LINE OF NW 1/4 SECTION 2 ON A VAR 7-20; AT
- 5211.36 INTERSECTED WEST BOUNDARY LINE 5.94' SOUTH OF CORNER COR VAR 7-12 FOUND OLD STAKE AT CORNER ALSO FOUND STUMP OF SOUTH BEARING TREE AND PUT IN NW CORNER OF SECTION FROM IT. ESTABLISHED NORTH QUARTER CORNER OF SECTION 2 IN THE TOWN LINE AND EQUI-DISTANT FROM THE NE AND NW CORNERS OF SAID SECTION. IT BEING EQUI-DISTANT FROM EACH 2605.68
- 1871 GRAVES VOL 6 PG 353 STATES NOTHING ABOUT N 1/4 COR SEC 2. ESTABLISHED N/S 1/4 LINE OF SEC 35 & CALLS FOR N5-45E 5325 & SOUTH LINE OF SEC 35 AS 5267.13. COMMENCE AT THE CENTER OF SECTION (35) [CORNER PREVIOUSLY SET] RUN SOUTH TO S 1/4 COR [COULD NOT BE FOUND TREES & STUMPS ALL GONE] WEST TO SE COR SEC COR SEC 35 AND RUN SHORT LINE TO S 1/4 COR. SHORT 13.2' DIVIDED EQUAL IN THE CENTER AND SET A STAKE 0.99' WEST OF THE 1/4 CORNER IN ROCK COUNTY ON SECTION TWO, & EQUALLY DIVIDED THE SW 1/4 OF SE 1/4??? JOHN D SPEAR & MRS CLERK BY SETTING CORNERS AT 1,2,3, & 4
- 1884 RUGER VOL 2 PG 387 STONE MON. 2612.15 TO STONE MON @ NE COR SEC 2, 2612.15 TO STONE @ NW COR SEC 2, VAR 5-48 2543.77 TO HH 20X14X9 SURROUNDED BY 4HH @ CENTER OF SEC 2, & VAR 5-48 5209.51 TO STONE MON @ S 1/4 COR SEC 2
- 1895 MARCY VOL 6 PG 353 SURVEY IN SEC 35 FOR THE TOWN BOARD OF RUTLAND RUN THE N&S CENTER LINE OF THE SECTION. RESTORE THE N 1/4 COR, BUT IT WAS NOT VERY RELIABLE NW COR OF SEC 35 FD BY ROOTS OF US BTS. AT ONE & TWO FD STONES SET BY GRAVES WHICH WERE ADOPTED FOR THE CENTER OF HIGHWAY - SEE DISTANCES IN RED & FIELD BOOK #2 PG 77 [COPIED FROM THE DANE COUNTY SURVEYOR'S RECORDS VOL 5 PG 214
- 1924 ELY VOL 3 PG 119 STONE 2613.66 TO EVIDENCE OF FENCE & STATEMENT OF OLD PROPERTY OWNER @ NW COR SEC 2. WESTERLY 115.5 FROM N 1/4 COR STONE TO NE COR OF UNION FROG RANCH PROPERTY.
- 1973 LEE VOL 4 PG 525 DUG & FD CUT STONE.

3004

SHEET 1 OF 4

Donald Barnes  
July 12, 2012

CORNER CODE A-19

UN510 N1/4CORSEC2

- 1973 LEE [1978 BARNES VOL 5 PG 410] FD CUT STONE MON 1.5' DEEP REF PK WITH SHINERS 5' WEST & 5' SOUTH. DATA COPIED FROM COUNTY SURVEYOR FIELD BOOK NO 163 PG 103.
- 1975 WILHELM VOL 5 PG 161 SET 5/8 REBAR. COR IS ON N/S PVMT CENTER & 3' EAST OF N/S PVMT CENTER OF RD GOING NORTH INTO DANE COUNTY. 2620.49 TO REBAR @ NE COR SEC 2 & 2613.95 TO REBAR @ NW COR SEC 2
- 1975 WILHELM #7008 SET 5/8" REBAR. S89-49-37E 2620.49 TO REBAR @ NE COR SEC 2, N89-49-37W 2613.95 TO FD PK [SET REBAR] @ NW COR SEC 2. SET 5/8 REBAR @ CENTER E/W & N/S PVMT. 3 EAST OF N/S PVMT CENTER. BEARING INDICATES CORNER IS ON LINE WITH NE & NW COR SEC 2.
- 1976 WEIR #5058 3/4 REBAR @ N 1/4 COR SEC 2 1.98 EAST OF S 1/4 COR SEC 35. SET PK @ S 1/4 COR SEC 35 FROM EXISTING SURVEY'S & USE OF OLD NOTES. TIES FROM S 1/4 COR SEC 35 TO NAIL IN BLAZED TREES. JACK KARNES NAME IS ON DRAWING BUT GEORGE WEIR SIGNED AFFIDAVIT.

CHECK LEE'S OLD FIELD BOOKS FOR POSSIBLE REFERENCE TIES AND FOUND NOTHING. OCT 2011-0.1' DEEP FD VERY OLD PK 5.7' SOUTH OF PIN. DID NOT FIND THE WESTERN PK. ACCIDENTALLY REMOVED THE PK WHILE REMOVING THE ASPHALT. DUG 2' DEEP AS SHOWN BUT DID NOT FIND THE CUT LIMESTONE. NOV 17 2011 DIGGERS HOT LINE MARKED THE SITE & THERE WERE NO UTILITIES IN AREA. JULY 9 2012 DUG WITH BACK HOE. FD LARGE NAIL & 8" PIN. FD CUT LIMESTONE 1.8 DEEP. PLACED NAIL, PIN, AND PIECES OF L.S. NEAR CUT LIMESTONE. PLACED MAGNET ON NORTH, SOUTH, EAST, & WEST SIDE OF STONE. SET MAG NAIL/FLASHER AT SURFACE. DUG 1.0' WEST OF CUT STONE & 1.7' BELOW CUT STONE FOR STAKE AT S 1/4 COR SEC 35 T5NR10E & FD NOTHING. BROKE TOP 6" OF CUT LIMESTONE. BASE IS IN EXCELLENT CONDITION. SET MAG NAIL N25-15W 4.04 & N43-20E 4.07' OF CUT L.S. CUT LIMESTONE IS @ E/W PVMT CENTER & 1' EAST OF N/S PVMT TO THE NORTH.

C) Was the corner restored through acceptance of (1) an obliterated evidence location, or, (2) a found perpetuated location?

ACCEPTED FD CUT L.S.

D) Describe any material discrepancy between the location of the corner as restored or reestablished and the location of that corner as previously restored or reestablished by distance and direction. Show the discrepancy on the plan view drawing under (a), above. Show the distances between the corner as previously restored or reestablished and (1) the corner as restored or reestablished, and (2) to at least 4 of the witness monuments shown on the drawing in (a), above.

I DID NOT ACCEPT THE FD REROD THAT WILHELM SET IN 1975. HIS PIN IS N43-04E 1.10' OF THE CUT L.S.

(E) Was the corner reestablished through lost corner proportionate methods? If so, show the method, including the directions and distances to other public land survey corners used as evidence or used for proportioning the corner location.

I, Donald Barnes, hereby certify that the corner location as identified by the corner code index was determined by me under my direction and control and that this U.S. Public Land Survey Monument Record is correct and complete to the best of my knowledge and belief.

*Donald Barnes*

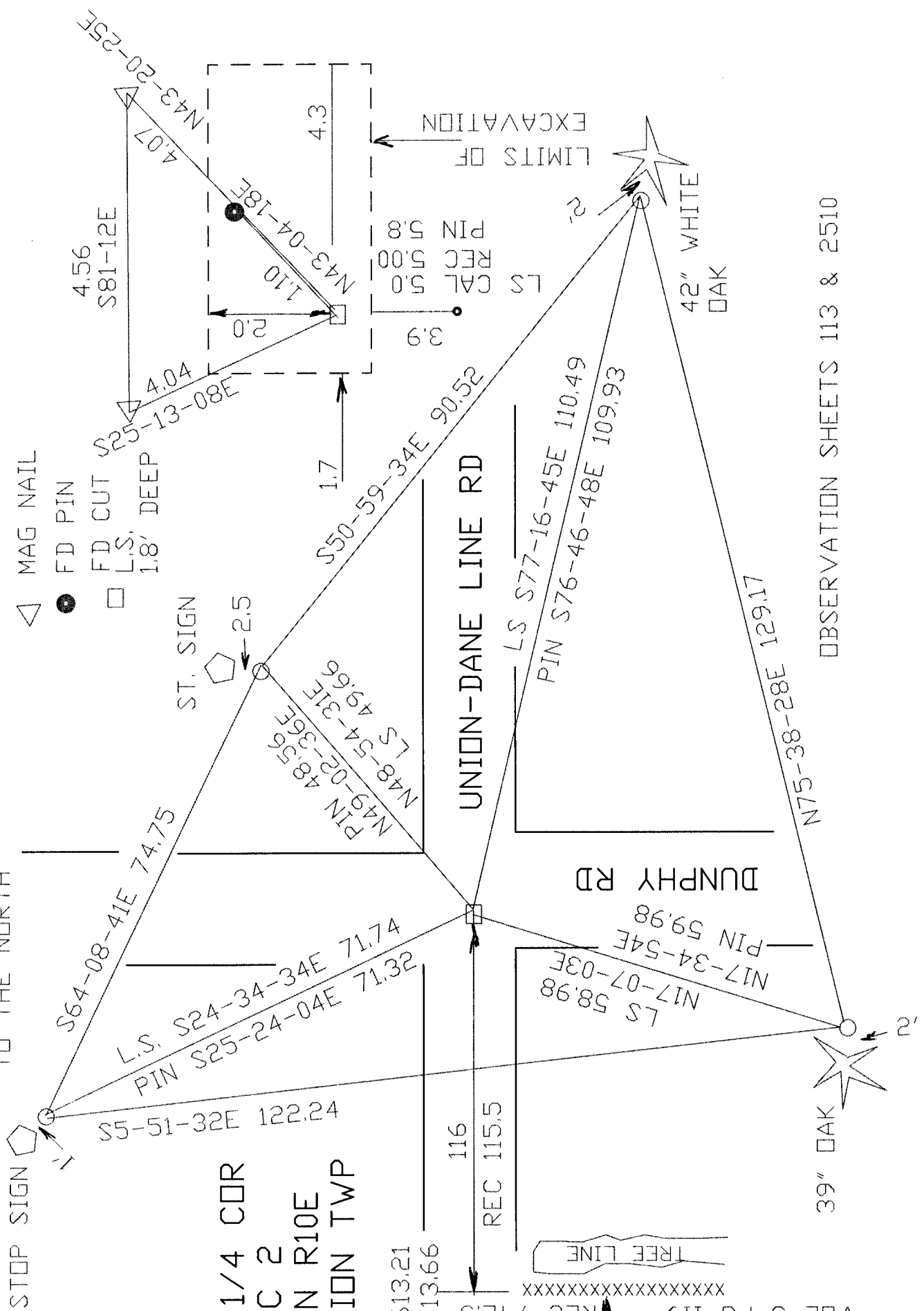
July 12, 2012

SHEET 2 OF 4

CORNER CODE **A-19**

A.E. 7.08 REQUIREMENT

CUT LS IS ON E/W PVMT CENT & 1' EAST OF N/S PVMT CENT TO THE NORTH



STOP SIGN  
 N 1/4 CDR  
 SEC 2  
 T4N R10E  
 UNION TWP

S89-53-42E 2613.21  
 1924 ELY 2613.66  
 REC 742.5  
 XXXXXXXXXXXXXXXXXXXX  
 TREE LINE

PLAT OF SURVEY  
 1924 ELY  
 VOL 3 PG 119  
 REC 742.5

SHEET 3 OF 4

A-19

*[Signature]*  
 EMBOSSED SEAL  
 July 12, 2012

OBSERVATION SHEETS 113 & 2510

LIMITS OF EXCAVATION

42" WHITE OAK

39" OAK

1833 DRIG 16.50  
1870 RUGER 16.50  
1871 GRAVES 14.52  
1976 WEIR 14.52  
S89-56-57E 14.52

CS

S89-54-59E 5265.77  
1871 GRAVES 5267.13  
1870 RUGER REMON 5240.40  
S89-53-43E 2626.74  
1833 SEP BRINK 2640.00

1870 RUGER VAR7-12 2605.68  
1884 RUGER 2612.15  
1920 ELY FENCE TO LS @ N 1/4 2613.66  
1975 WILHELM S89-49-37E 2613.95  
S89-53-42E 2613.21  
1870 RUGER 5211.36  
1884 RUGER 5224.25  
S89-54-53E 5234.58

S89-53-42E 0.99  
1871 GRAVES 0.99  
1976 WEIR 1.98  
0.90 SOUTH OF  
LINE BETWEEN NE & NW  
CORNERS OF SEC 2

SEC 35

S89-56-14E 2639.03  
1833 SEP BRINK 2640.00

1870 RUGER VAR7-20 2605.68  
1884 RUGER 2612.15  
1975 WILHELM S89-49-37E 2620.49  
S89-56-04E 2621.37

SEC 2

SEC 2

0.49 EAST  
OF LINE FROM  
S 1/4 TO N 1/4

N89-30-41R 5228.97  
1884 RUGER 5222.91  
1884 RUGER 2609.31  
1991 COMBS 2658.32  
N89-30-41E 2614.74

1884 RUGER 2613.60  
N89-30-41E 2614.22

1884 RUGER VAR5-48 2665.74  
NO-13-41W 2666.98

1884 RUGER 5209.51  
NO-14-11W 5211.52

*Paul Banes*  
EMBOSSED SEAL  
July 12, 2012