

Paper weight-110# (minimum)      Black nonfading ink required

# U.S. PUBLIC LAND SURVEY MONUMENT RECORD

For Public Land Survey Corners In:  
**T. 4 N. R. 10 E. 4th P.M.**  
 CORNER CODE INDEX

WI ADMINISTRATIVE CODE A-E 7.08 REQUIREMENT  
 REV 10/23/2004      USMONREC.DWG

**UNION** TWP  
**ROCK COUNTY WI**

IF AVAILABLE  
 ROCK COUNTY COORDINATES PREFERRED

A	1	2	3	4	5	6	7	8	9	10	11	12	13	14	15	16	17	18	19	20	21	22	23	24	25	A		
B		6					5						4					3								2		B
C			6																									C
D				6																								D
E					6																							E
F						6																						F
G							6																					G
H								6																				H
J									6																			J
K										6																		K
L											6																	L
M												6																M
N													6															N
O														6														O
P															6													P
Q																6												Q
R																	6											R
S																		6										S
T																			6									T
U																				6								U
V																					6							V
W																						6						W
X																							6					X
Y																								6				Y
Z																									6			Z

North \_\_\_\_\_ Elev. \_\_\_\_\_

East \_\_\_\_\_

Hor. Datum \_\_\_\_\_ Vert. Datum \_\_\_\_\_

LATITUDE \_\_\_\_\_ ELLIPS. HT. \_\_\_\_\_

LONGITUDE \_\_\_\_\_

NAD83(91) \_\_\_\_\_ NETWORK ADJ. YR 2010 \_\_\_\_\_

GPS (X) \_\_\_\_\_ TRAVERSE (X) X

BASED ON THE FOLLOWING CONTROL:

◆ CORNER MONUMENT      ○ WITNESS MONUMENT

BEARINGS ARE BASED ON: --- ROCK COUNTY PROJECTION ---

FIELD BOOK \_\_\_\_\_ PAGE # \_\_\_\_\_

OR OBSERVATION SHEET \_\_\_\_\_

SHEET 1 OF 4

SHOW A PLAN VIEW DRAWING DEPICTING THE CORNER MONUMENT AND SURROUNDING PHYSICAL FEATURES, INCLUDING THE EXCAVATION AREA AND DEPTH.

PLANNING & ZONING COMMITTEE ADOPTED THIS FORM ON 12/2/1982

CORNER CODE A-13

UN507 NECORSEC4

(B) Describe any record evidence, monument evidence, occupational evidence, testimonial evidence or any other material evidence you considered, and whether the monument was found or placed.

1833 BRINK SOUTH BOUNDARY OF T5N R10E WEST ON SOUTH SIDE SECTION 34

2478.96 BURR OAK 12  
2640.00 SET QUARTER SECTION POST BURR OAK 10 N33E 34.32'; BURR OAK 12 N70W 57.42'  
4967.82 BUR OAK 14  
5280.00 SET POST CORNER TO SECTIONS 33 & 34 BURR OAK 7 N16W 7.92'; BURR OAK 14 N45E 40.26' LAND & C SAME

1833 BRINK SOUTH BOUNDARY OF T5N R10E WEST ON SOUTH SIDE SECTION 33

208.56 BURR OAK 14  
2408.34 BURR OAK 12  
2640.00 SET QUARTER SECTION POST BURR OAK 9 N1E 29.70'; BUR OAK 10 N59 1/2E 58.74'  
5280.00 SET POST CORNER TO SECTIONS 32 & 33 BURR OAK 12 N2? 4E 84.48'; BURR OAK 12 N63 1/2W 112.70' LAND & C SAME

1833 HARRISON T5N R10E 4TH MER. NORTH BETWEEN SECTIONS 33 & 34

1714.02 B. OAK 16 IN.  
2423.52 B. OAK 12 IN  
2640.00 SET 1/4 SEC POST B.B.O. 12 IN N56E 7.26'; B.B.O 10 IN S62W 54.12'  
4009.5 B. OAK 17 IN  
5280.00 SET POST COR SECS 27,28,33,34 B.B.O 12 IN N28W 5.94'; B.O. 12 IN S26-30E 37.62'

1833 HARRISON T4N R10E NORTH BETWEEN SECTIONS 3 & 4

1954.26 BURR O 10  
2640.00 QUARTER SEC COR. {BURR O 12 S56W 19.8'; BURR O 12 S27E 30.36' BURR O 12 & BURR O 12} MARKED  
2904.0 SMALL POND - OFFSET E 264.0'; N 726'; W 264.0'  
3729.66 WD 20  
5155.92 INT. N. BDY 17.82' WEST OF P. {BURR O 12 S34E 1.32'; BURR O 18 S34W 48.18' LAND & C SAME

1870 RUGER AUG REMON-115 WEST ON NORTH LINE OF NE 1/4 SEC 4 ON A VAR 7-13; OFFSET SOUTH 12.54' INTERSECTED QUARTER LINE OF SECTION 33. T5N R10 13.86' SOUTH OF QUARTER CORNER. COR VAR 7-11 CONTINUED WEST ON NORTH LINE OF NW QUARTER ON A VAR 7-13; OFFSET SOUTH 14.52' OFFSET NORTH 37.62' AT

5324.22 INTERSECTED WEST BOUNDARY LINE 3.96' SOUTH OF CORNER. FOUND CORNER ESTABLISHED BY CHURCH FROM BEARING TREES. ALSO FOUND STUMP OF WEST BEARING TREE AND REMAINS OF STUMP OF EAST BEARING TREE. CORNER ESTABLISHED BY CHURCH CORRECT. COR VAR 6-37' ESTABLISHED NORTH QUARTER CORNER OF SECTION 4 ON THE TOWN LINE AND EQUI-DISTANT FROM THE NE AND NW CORNERS OF SAID SECTION. IT BEING 2662.11 DISTANT FROM EACH AND 63.52' WEST OF THE SOUTH QUARTER CORNER OF SECTION 33 T5 R10

1870 RUGER AUG REMON-114 EAST ON NORTH LINE OF NW 1/4 SEC 3 ON A VAR 7-25; OFFSET SOUTH 22.11' OFFSET NORTH 15.18' INTERSECTED QUARTER LINE OF SECTION 34 T5 R10 2.64'

SHEET 1 OF 4

CORNER CODE A-13

*Donald Baines*  
Emboss  
Baines  
Nov 9, 2011

UN507 NECORSEC4

- SOUTH OF QUARTER CORNER. COR VAR 7-19 CONTINUED EAST ON NORTH LINE OF NE 1/4 OF SAID SECTION ON A VARIATION OF 7-15; AT*
- 5280.33 INTERSECTED EAST BOUNDARY LINE AT CORNER. ESTABLISHED NORTH QUARTER CORNER OF SECTION 3 ON THE TOWN LINE EQUI-DISTANT BETWEEN THE NW AND NE CORNERS OF SAID SECTION. IT BEING 2640.16 DISTANT FROM EACH AND 0.66' WEST OF THE SOUTH QUARTER CORNER OF SECTION 34 T5 R10
- 1870 RUGER AUG REMON-113  
*NORTH ON WEST LINE OF SW 1/4 SEC 3 ON A VAR 6-55; OFFSET WEST 5.94'; OFFSET EAST 14.85' AT*
- 2657.82 INTERSECTED QUARTER CORNER 11.88' EAST OF QUARTER CORNER. FOUND REMAINS OF OLD STAKE AT CORNER ALSO FD STUMPS OF BOTH BEARING TREES. COR VAR 6-59  
*NORTH ON WEST LINE OF NW 1/4 SEC 3 ON A VAR 7-10; OFFSET EAST TO AVOID POND. 297.99' OFFSET WEST 305.58' AT*
- 2525.16 INTERSECTED NORTH BOUNDARY LINE 8.58' WEST OF CORNER FOUND REMAINS OF OLD STAKE AT CORNER. ALSO FOUND STUMP OF SW BEARING TREE AND REMAINS OF STUMP OF SE BEARING TREE. COR VAR 7-08
- 1978 BARNES VOL 5 PG 387 FD CUT LIMESTONE 0.2' DEEP AT INTERSECTION OF E/W & SOUTH FENCE. REFERENCED.
- 1979 WILHELM #40034 & #5074 FD 6X6 LIMESTONE MON. WESTERLY 17.82 FROM PIPE @ SE COR SEC 33 T5N R11E. FROM SE COR SEC 33 TO E 1/4 COR SEC 33 N3-01-14W 2656.49 TO E 1/4 COR SEC 33 & S89-55-48W 2628.22 TO S 1/4 COR SEC 33.
- 1980 FED #5075 6X6 LIMESTONE MON. S89-55-48W 2610.40 TO 1" PIPE @ S 1/4 COR SEC 33, S0-02-43E 2524.74 TO 1" PIPE @ E 1/4 COR SEC 4. 17.82 WEST OF 1" PIPE @ SE COR SEC 33
- 1982 COMBS CSM VOL 11 PG 109 FD R/R SPIKE 0.66' EAST OF PIN @ S 1/4 COR SEC 34. WEST 1324.04 TO PIPE CENTER OF RD INTERSECTION
- 1990 TALARCZK CSM 4 PG 307 SEC COR COMPUTED FROM TIES ON PREVIOUS SURVEY.
- 1993 KARNS CSM VOL 17 PG 197 STATES NOTHING ABOUT MON. S0-19-40W 1377.8. TO NE LOT COR. & 2528.44 TO E 1/4 COR SEC 4.
- 1995 KARNS CSM VOL 18 PG 257 STATES NOTHING ABOUT MON. S0-19-40W 2528.44 TO E 1/4 COR SEC 4

FD CUT LIMESTONE 0.1' DEEP. SET CARSONITE POST ON WEST SIDE OF L.S.

C) Was the corner restored through acceptance of (1) an obliterated evidence location, or, (2) a found perpetuated location?

ACCEPTED FD CUT LIMESTONE. FD PIPE WAS NOT IN HARMONY WITH

*Ronald Barnes*

*Nov 9, 2011*

RUGER'S DISTANCE TO THE CUT L.S. DID NOT ACCEPT THE FD PIPE.

D) Describe any material discrepancy between the location of the corner as restored or reestablished and the location of that corner as previously restored or reestablished by distance and direction. Show the discrepancy on the plan view drawing under (a), above. Show the distances between the corner as previously restored or reestablished and (1) the corner as restored or reestablished, and (2) to at least 4 of the witness monuments shown on the drawing in (a), above. **NONE**

(E) Was the corner reestablished through lost corner proportionate methods? If so, show the method, including the directions and distances to other public land survey corners used as evidence or used for proportioning the corner location. **NO**

I, **Donald Barnes**, hereby certify that the corner location as identified by the corner code index was determined by me under my direction and control and that this U.S. Public Land Survey Monument Record is correct and complete to the best of my knowledge and belief.

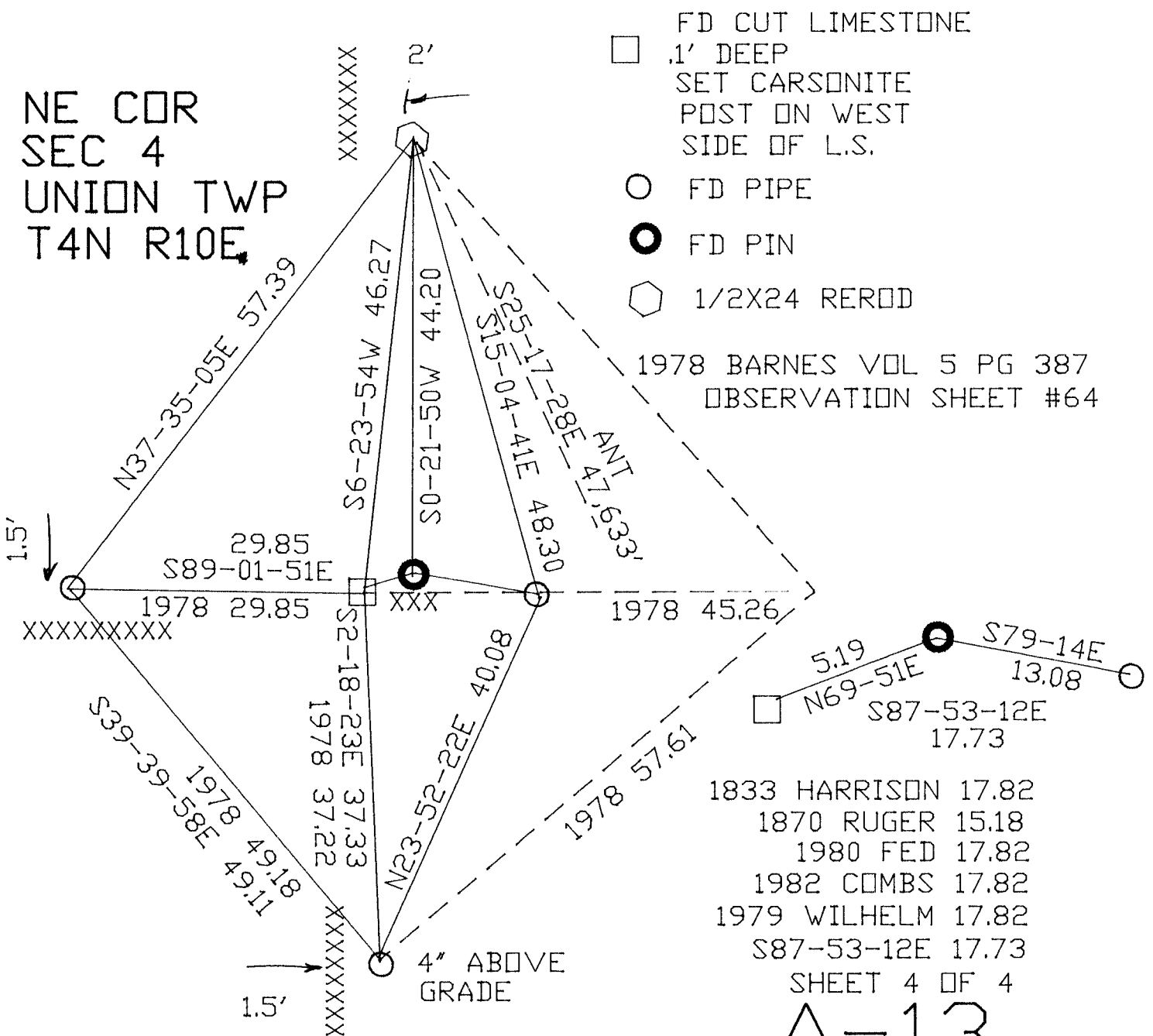
*Donald Barnes*  
*Nov 9, 2011*

SHEET 3 OF 4

CORNER CODE **A-13**

A.E. 7.08 REQUIREMENT

NE COR  
SEC 4  
UNION TWP  
T4N R10E



- 1833 HARRISON 17.82
- 1870 RUGER 15.18
- 1980 FED 17.82
- 1982 COMBS 17.82
- 1979 WILHELM 17.82
- S87-53-12E 17.73

SHEET 4 OF 4  
A-13

*Paul Bauer*  
Nov 9, 2011