

U.S. PUBLIC LAND SURVEY MONUMENT RECORD

For Public Land Survey Corners In:

WI ADMINISTRATIVE CODE A-E 7.08 REQUIREMENT

T. 4 N. R. 10 E. 4th P.M.

REV 10/23/2004

USMONREC.DWG

CORNER CODE INDEX

1	2	3	4	5	6	7	8	9	10	11	12	13	14	15	16	17	18	19	20	21	22	23	24	25	
A																									A
B	6					5				4				3				2					1		B
C																									C
D																									D
E																									E
F																									F
G	7					8				9				10				11					12		G
H																									H
J																									J
K	18					17				16				15				14					13		K
L																									L
M																									M
N																									N
O																									O
P	19					20				21				22				23					24		P
Q																									Q
R																									R
S																									S
T	30					29				28				27				26					25		T
U																									U
V																									V
W																									W
X	31					32				33				34				35					36		X
Y																									Y
Z																									Z

UNION TWP
ROCK COUNTY WI

IF AVAILABLE
ROCK COUNTY COORDINATES PREFERRED

North _____ Elev. _____

East _____

Hor. Datum _____ Vert. Datum _____

LATITUDE _____ ELLIPS. HT. _____

LONGITUDE _____

NAD83(91) _____ NETWORK ADJ. YR 2010

GPS (X) _____ TRAVERSE (X) X

BASED ON THE FOLLOWING CONTROL:

1 2 3 4 5 6 7 8 9 10 11 12 13 14 15 16 17 18 19 20 21 22 23 24 25
PLACE MONUMENT SYMBOL AT PROPER LOCATION ON ABOVE INDEX

CORNER MONUMENT WITNESS MONUMENT

BEARINGS ARE BASED ON: ROCK COUNTY PROJECTION

FIELD BOOK _____ PAGE # _____
OR OBSERVATION SHEET _____

SHEET 1 OF 2

SHOW A PLAN VIEW DRAWING DEPICTING THE CORNER MONUMENT AND SURROUNDING PHYSICAL FEATURES, INCLUDING THE EXCAVATION AREA AND DEPTH.

PLANNING & ZONING COMMITTEE ADOPTED THIS FORM ON 12/2/1982

CORNER CODE V-7(1)

UN604 N1/4CORSECC32

(B) Describe any record evidence, monument evidence, occupational evidence, testimonial evidence or any other material evidence you considered, and whether the monument was found or placed.

- 1833 HARRISON T4N R10E 4TH MER EAST BET. SECS 29 & 32
1980.0 LEAVE PRAIRIE & ENTER TIMBER
2640.00 TEMPY 1/4 SEC COR
5243.70 INT. E BDY 9.9' S OF P LAND 1ST 1/2 MILE
ROLLING 1ST RATE PRAIRIE 2ND 1/4 LEVEL
2ND RATE WITH TIMBER OF BURR O. &
UNDERGROUTH
OF SCRUBS GRASS & WEEDS
WEST COR WEST BET SECS 29 & 32
2621.85 QUARTER SEC COR {WO 12 N23E 50.82'; BURR
O 14 N64W 122.76' WO 12 & BURR} MARKED
5243.70 INT SEC COR.
- 1870 RUGER AUG REMON-78 WEST ON NORTH LINE OF NE 1/4
SEC 32 ON A VAR 6-40' OFFSET NORTH 16.5' AT
2621.85 INTERSECTED QUARTER LINE 31.68' NORTH OF
QUARTER CORNER. FOUND REMAINS OF OLD
STAKE AT CORNER. ALSO FOUND REMAINS OF
BOTH STUMPS OF BEARING TREES. COR VAR 7-
00
WEST ON NORTH LINE OF NW 1/4 SEC 32
ON A VAR 7-05 OFFSET NORTH 8.74'
OFFSET SOUTH 37.95' AT
2625.15 INTERSECTED WEST BOUNDARY LINE 11.72'
NORTH OF CORNER. FOUND HARD HEAD STONE
AT CORNER SET BY SELF IN A PREVIOUS SURVEY.
COR VAR 7-58
- 1900 BROWN VOL 2 PG 518 FD MONUMENT 2625.48 TO MON @ NE
COR SEC 32. USED TO SUBDIVIDE SEC 32
- 1994 KRIZAN CSM VOL 17 PG 161 ALUM. SO-13-SOW 5314.20 TO
ALUM @ S 1/4 COR SEC 32.
- 1994 BARNES V-7 FD CUT LIMESTONE 0.5' DEEP. PLACED
CARSONITE POST AT NE COR OF STONE & 2 MAGNETS ON
SOUTH SIDE. REFERENCED SAME. FB #2 PG 52. & FENCE
INT.

FD CUT LIMESTONE 0.3' DEEP WITH CARSONITE POST. FD
REFERENCE MONUMENTS. PLACED 2 MAGNETS ON SOUTH FACE OF
LS.

C) Was the corner restored through acceptance of (1) an obliterated evidence location, or, (2) a found
perpetuated location?

ACCEPTED FD CUT LIMESTONE.

D) Describe any material discrepancy between the location of the corner as restored or reestablished
and the location of that corner as previously restored or reestablished by distance and direction. Show
the discrepancy on the plan view drawing under (a), above. Show the distances between the corner as
previously restored or reestablished and (1) the corner as restored or reestablished, and (2) to at least 4
of the witness monuments shown on the drawing in (a), above.

NONE


(E) Was the corner reestablished through lost corner proportionate methods? If so, show the method,
including the directions and distances to other public land survey corners used as evidence or used for
proportioning the corner location.

NO

I, Donald Barnes, hereby certify that the corner location as identified by the corner code index
was determined by me under my direction and control and that this U.S. Public Land Survey
Monument Record is correct and complete to the best of my knowledge and belief.

SEAL

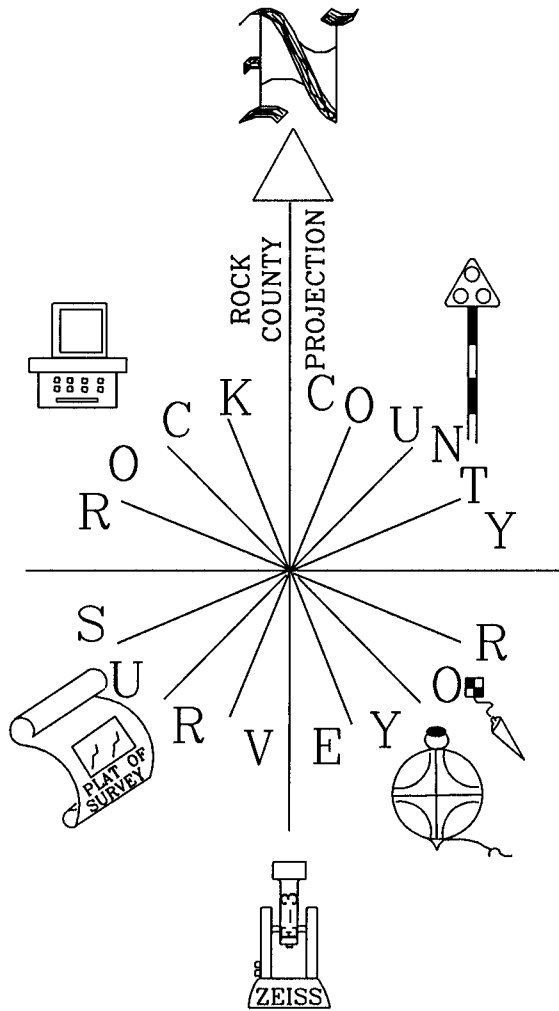
Emboss


8/09/2012

SHEET 1 OF 2

CORNER CODE V-7(1)

A.E. 7.08 REQUIREMENT

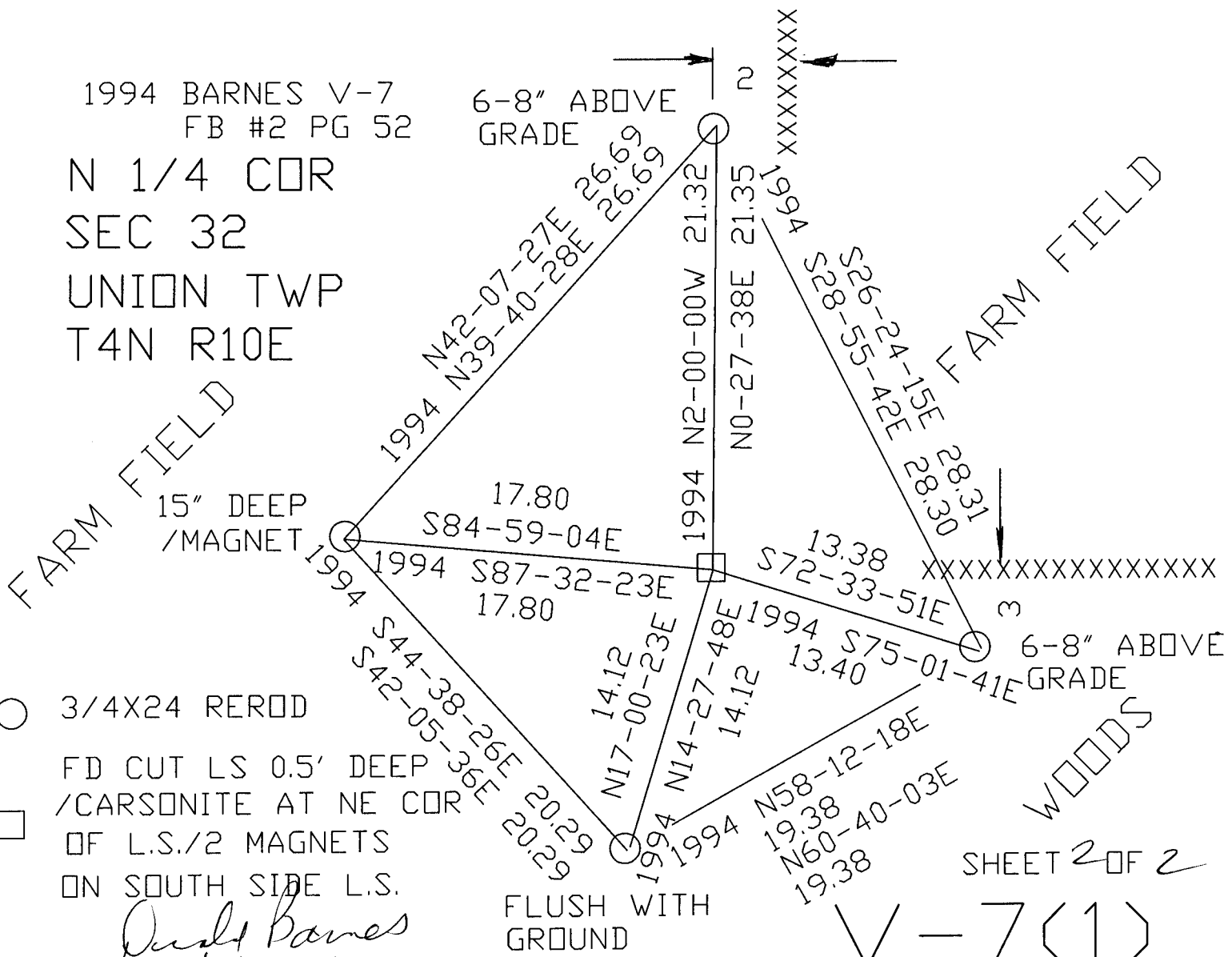


NOT TO SCALE

1994 BARNES V-7
FB #2 PG 52

N 1/4 COR
SEC 32
UNION TWP
T4N R10E

6-8" ABOVE
GRADE



○ 3/4X24 REROD

□ FD CUT LS 0.5' DEEP
/CARSONITE AT NE COR
OF L.S./2 MAGNETS
ON SOUTH SIDE L.S.

Daryl Barnes
4/09/2012

SHEET 2 OF 2

V-7(1)