

U.S. PUBLIC LAND SURVEY MONUMENT RECORD

For Public Land Survey Corners In:
T. 4 N. R. 10 E. 4th P.M.
CORNER CODE INDEX

WI ADMINISTRATIVE CODE A-E 7.08 REQUIREMENT
REV 10/23/2004 USMONREC.DWG

UNION TWP

ROCK COUNTY WI

IF AVAILABLE
ROCK COUNTY COORDINATES PREFERRED

	1	2	3	4	5	6	7	8	9	10	11	12	13	14	15	16	17	18	19	20	21	22	23	24	25		
A																											A
B																											B
C																											C
D																											D
E																											E
F																											F
G																											G
H																											H
J																											J
K																											K
L																											L
M																											M
N																											N
O																											O
P																											P
Q																											Q
R																											R
S																											S
T																											T
U																											U
V																											V
W																											W
X																											X
Y																											Y
Z																											Z

North _____ Elev. _____

East _____

Hor. Datum _____ Vert. Datum _____

LATITUDE _____ ELLIPS. HT. _____

LONGITUDE _____

NAD83(91) _____ NETWORK ADJ. YR _____

GPS (X) _____ TRAVERSE (X) _____

BASED ON THE FOLLOWING CONTROL:

PLACE MONUMENT SYMBOL AT PROPER LOCATION ON ABOVE INDEX

CORNER MONUMENT

WITNESS MONUMENT

(a)

BEARINGS ARE BASED ON: _____

FIELD BOOK _____ PAGE # _____

SHEET 1 OF 5

SHOW A PLAN VIEW DRAWING DEPICTING THE CORNER MONUMENT AND SURROUNDING PHYSICAL FEATURES, INCLUDING THE EXCAVATION AREA AND DEPTH.

PLANNING & ZONING COMMITTEE ADOPTED THIS FORM ON 12/2/1982

CORNER CODE T-19(3)

UN4598

(B) Describe any record evidence, monument evidence, occupational evidence, testimonial evidence or any other material evidence you considered, and whether the monument was found or placed.

- 1856 CHURCH VOL 1 PG 63 ESTABLISHED THE CORNER BY THE EQUAL DISTANCE METHOD AS PRESCRIBED BY THE LAWS OF 1853 WHICH WERE IN EFFECT UNTIL 1858. BUR O 20 N89E 143.88', BUR O 30 S85E 206.25', 2630.76 TO E & W 1/4 CORNERS SEC 26, & 2655.84 TO N 1/4 & S 1/4 CORNERS SEC 26.
- 1865 LOCKE VOL 1 PG 232 & MAP #05199 SET A LIMESTONE 18X12X3 OVER A STAKE WITH 1/2 BRICK ON N,E,S, & W. 2656.83 TO N 1/4 & S 1/4 CORNERS OF SEC 26, & 2628.45 TO W 1/4 & E 1/4 CORNERS OF SEC 26. THIS ESTABLISHED BY THE EQUAL DISTANCE METHOD FROM THE QUARTER CORNERS.
- 1870 RUGER REMON OF TOWNSHIP DECLARED THE S 1/4 CORNER LOST & ESTABLISHED IT ON LINE BETWEEN THE SE & SW CORNERS AT MID POINT.
- 1883 RUGER VOL 2 PG 397 LIMESTONE 15X4X4 2629.28 W 1/4 COR SEC 26
- 1907 KERCH VOL 3 PG 43 FD STONE. 2634.48 TO W 1/4 COR SEC 26.
- 1962 THOM MAP #M5195 USED CENTER SEC 26 FOR LINE BUT STATED NOTHING ABOUT MON. 1320.95 FROM E 1/4 COR SEC 26 ALONG E/W 1/4 LINE TO 1/16TH COR.
- 1962 BATTERMAN VOL 4 PG 118 SET R/R SPIKE AT CEN OF SEC 26 USING THE INTERSECTION OF THE LINES RUNNING FROM E & W, N & S 1/4 CORNER OF SAID SECTION. PLACED THREE REFERENCE PIPES ON NORTH SIDE OF RD. DRAWING SHOWS CORNER IN NORTHERN WEST BOUND LANE.
- 1962 BATTERMAN VOL 4 PG 145 SAME AS PG 118 BUT ADDITIONAL MEASUREMENTS.
- 1962 BATTERMAN MAP #M5194 & M6993. USED FOR LINE BUT STATED NOTHING ABOUT MON.
- 1978 SHEARMAN MAP #M05213 FD R/R SPIKE SO-00-10E 2662.72 TO S 1/4 COR SEC 26, NB9-57-30W 2634.16 TO W 1/4 COR SEC 26, W 1/4 COR SEC 26 TO SW COR SEC 26 IS SO-13-57E 2659.23, & FROM SW TO S 1/4 COR SEC 26 IS SB9-32-49E 2623.53
- 1983 LEE CSM VOL 11 PG 320 R/R SPIKE. 2641.72 TO E 1/4 COR SEC 26
- 1985 THOM CSM VOL 12 PG 61 FD R/R NB9-38-50W 2633.58 TO W 1/4 COR SEC 26, SO-00-10E 297.00 TO PROPERTY COR.
- 1985 BARNES T-19 FD R/R SPIKE, NW REFERENCE PIPE, NE REFERENCE PIPE & PLACED 2 RERODS. 285,233.18; 2,193,500.03
- 1985 BARNES VOL 6 PG 340 SHOWS RECORD DISTANCES & ANGLES. NB9-27-41E 2641.39 TO E 1/4 COR SEC 26, SO-56-14E 2662.41 TO S 1/4 COR SEC 26, NO-55-24W 2663.61 TO N 1/4 COR SEC 26, SB9-26-58W 2633.73 TO W 1/4 COR SEC 26, FROM NW 26 TO N 1/4 SEC 26 IS NB9-33-08E 2656.99, FROM W 1/4 COR SEC 26 TO W 1/16TH COR OF NW 1/4 SEC 26 IS N1-23-15W 1333.84, FROM SW COR SEC 26 TO W 1/4 COR SEC 26 IS N1-08-54W 2659.60, & FROM SW COR SEC 26 TO S 1/4 COR SEC 26 IS NB9-30-44E 2623.95
- 1986 LEE CSM VOL 12 PG 420 STATES NOTHING ABOUT MON.
- 1990 COMBS CSM VOL 14 PG 487 FD R/R SPIKE. USED AS N/S 1/4 LINE. 1865.89 FROM S 1/4 COR SEC 26 ALONG LINE TO POB OF CSM.
- 1991 COMBS CSM VOL 15 PG 74 FD R/R 2633.79 TO W 1/4 COR SEC 26.
- 1992 LEE BK 32 PG 156 COUNTRYSIDE ESTATES PLAT #2 FD DOT ALUM IN MON. BOX 2634.00 TO PK FROM REF. TIES @ W 1/4 COR SEC 26.

Donald Barnes
Nov 14 2005

SHEET 1 OF 5
CORNER CODE T-19(3)

UN4598

- 1993 BIRRENKOTT CSM VOL 16 PG 378 FD ALUM. NB9-27-11E 2641.21 TO STONE @ E 1/4 COR SEC 26, SO-56-20E 2662.11 TO STONE @ S 1/4 COR SEC 26, FROM S 1/4 COR TO SE COR SEC 26 IS NB9-23-12E 2622.52, & FROM SE TO E 1/4 COR SEC 26 IS NO-32-11W 2659.01'
- 1993 COMBS CSM VOL 16 PG 441 & 444 FD ALUM. MON. 2633.90 TO PK @ W 1/4 COR SEC 26.
- 1994 COMBS CSM VOL 17 PG 296 FD BRASS PLUG. 2633.90 TO PK @ W 1/4 COR SEC 26.
- 1994 COMBS CSM VOL 17 PG 311 STATES NOTHING ABOUT MON. 2633.79 TO PK @ W 1/4 COR SEC 26.
- 1994 KIENBAUM BK 32 PG 232 "COUNTRYSIDE ESTATES PLAT #3 FD DOT ALUM IN MON. BOX 2634.00 TO PK @ W 1/4 COR SEC 26.
- 1994 COMBS CSM VOL 18 PG 265 BRASS PLUG. 2633.90 TO W 1/4 COR SEC 26
- 1996 KIENBAUM BK 32 PG 292 "COUNTRYSIDE ESTATES PLAT #4 FD DOT ALUM IN MON. BOX 2634.00 TO PK @ W 1/4 COR SEC 26.
- 1997 KIENBAUM BK 32 PG 390 "COUNTRYSIDE ESTATES PLAT #5 2641.16 TO E 1/4 COR SEC 26.
- 1998 KNUDSON MAP #M08177 FD ALUM. NB9-56-51E 2641.25 TO LIMESTONE @ E 1/4 COR SEC 26, SO-26-16E 2662.31 TO S 1/4 COR SEC 26. FROM S 1/4 COR SEC 26 TO SE COR SEC 26 IS NB9-52-41E 2622.82, & FROM SE COR SEC 26 TO E 1/4 COR SEC 26 IS NO-02-28W 2659.07.
- 1999 MAP #M07227 FD ALUM. NB9-56-51E 2641.25 TO LIMESTONE @ E 1/4 COR SEC 26, SO-26-16E 2662.31 TO S 1/4 COR SEC 26. FROM S 1/4 COR SEC 26 TO SE COR SEC 26 IS NB9-52-41E 2622.82, & FROM SE COR SEC 26 TO E 1/4 COR SEC 26 IS NO-02-28W 2659.07.
- 1999 KIENBAUM BK 32 PG 462 "COUNTRYSIDE ESTATES PLAT #6 FD DOT ALUM IN MON. BOX 2641.16 TO STONE @ E 1/4 COR SEC 26
- 2000 COMBS CSM VOL 23 PG 247 FD DOT MON. 2641.28 TO E 1/4 COR SEC 26.
- 2002 COMBS CSM VOL 25 PG 455 FD DOT MON. USED FOR LINE AS 1/4 LINE FROM LIMESTONE @ N 1/4 COR SEC 26. 1332.80' FROM N 1/4 COR SEC 26 TO NW COR OF "COUNTRYSIDE ESTATES PLAT #5"
- 2003 WIDOT MAP #25087 PROJ. 5/55-00-22 SHEET 4.4 4-10-2003 R/R SPIKE 304,700.190'N/W; 424,381.970'E/W. NB9-54-55W 2633.66 TO W 1/4 COR SEC 26, NB9-54-19E 2641.42 TO E 1/4 COR SEC 26, NO-17-17W 2663.62 TO TAN
- 2003 KIENBAUM BK 32 PG 598 "COUNTRYSIDE ESTATES PLAT #7" FD DOT ALUM IN MON. BOX SB9-07-08E 2641.16 TO STONE @ E 1/4 COR SEC 26, NB9-07-08W 2634.00 TO PK @ W 1/4 COR SEC 26, NO-29-40E ALONG N/S 1/4 LINE 241.41 TO LOT COR.
- 2005 BARNES T-19(2) PROJECT ENGINEER CONTACTED ME DURING CONSTRUCTION. FOUND ABOUT 8' OF AREA IN ROAD REMOVED AROUND MONUMENT. FD WIDOT DISK IN ROUND MONUMENT BOX. DISTANCES TO FD REFERENCE MONUMENTS INDICATES EITHER MONUMENT MOVED ABOUT A TENTH OR THE DISK WAS NOT PLACED AT THE CORRECT POSITION. SEARCHED FOR OLD MONUMENTS OF RECORD UNDER SURFACE MONUMENTS AND FOUND NOTHING. ALL PREVIOUS MONUMENTS OF RECORD DESTROYED BY CURRENT OR PAST ROAD CONSTRUCTION.

PLACED PK & 4 CROSS PK TIES FOR WIDOT CONTRACTOR TO PLACE MONUMENT. DRILLED HOLE IN WIDOT DISK.

SHEET 2 OF 5
CORNER CODE T-19(3)

Ronald Barnes
Nov 4 2005

UN4598

C) Was the corner restored through acceptance of (1) an obliterated evidence location, or, (2) a found perpetuated location?

ACCEPTED INTERSECTION OF RECORD TIES.

D) Describe any material discrepancy between the location of the corner as restored or reestablished and the location of that corner as previously restored or reestablished by distance and direction. Show the discrepancy on the plan view drawing under (a), above. Show the distances between the corner as previously restored or reestablished and (1) the corner as restored or reestablished, and (2) to at least 4 of the witness monuments shown on the drawing in (a), above.

DISCREPANCY SHOW IN DRAWING IS PROBABLY THE RESULT OF THE MONUMENT BEING DISTURBED DURING ROAD CONSTRUCTION OR INSTALLATION BY WIDOT IN PREVIOUS ROAD CONSTRUCTION PROJECT.

(E) Was the corner reestablished through lost corner proportionate methods? If so, show the method, including the directions and distances to other public land survey corners used as evidence or used for proportioning the corner location.

I, **Donald Barnes**, hereby certify that the corner location as identified by the corner code index was determined by me under my direction and control and that this U.S. Public Land Survey Monument Record is correct and complete to the best of my knowledge and belief.

Seal

Donald Barnes

Emboss

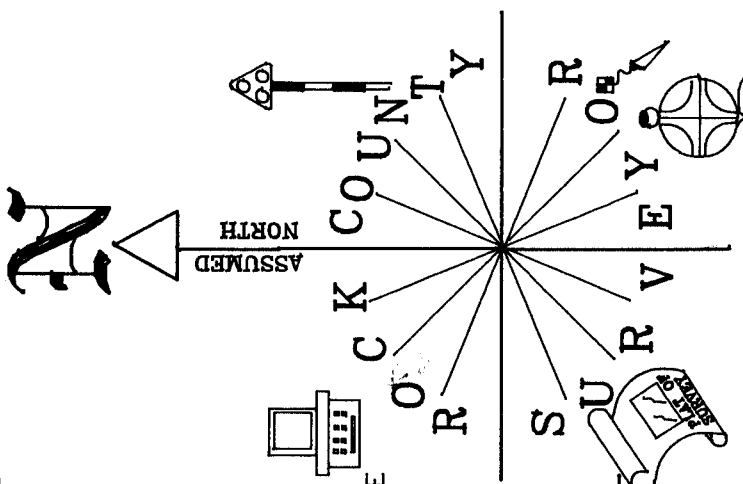
NOV 4 2005

SHEET 3 OF 5

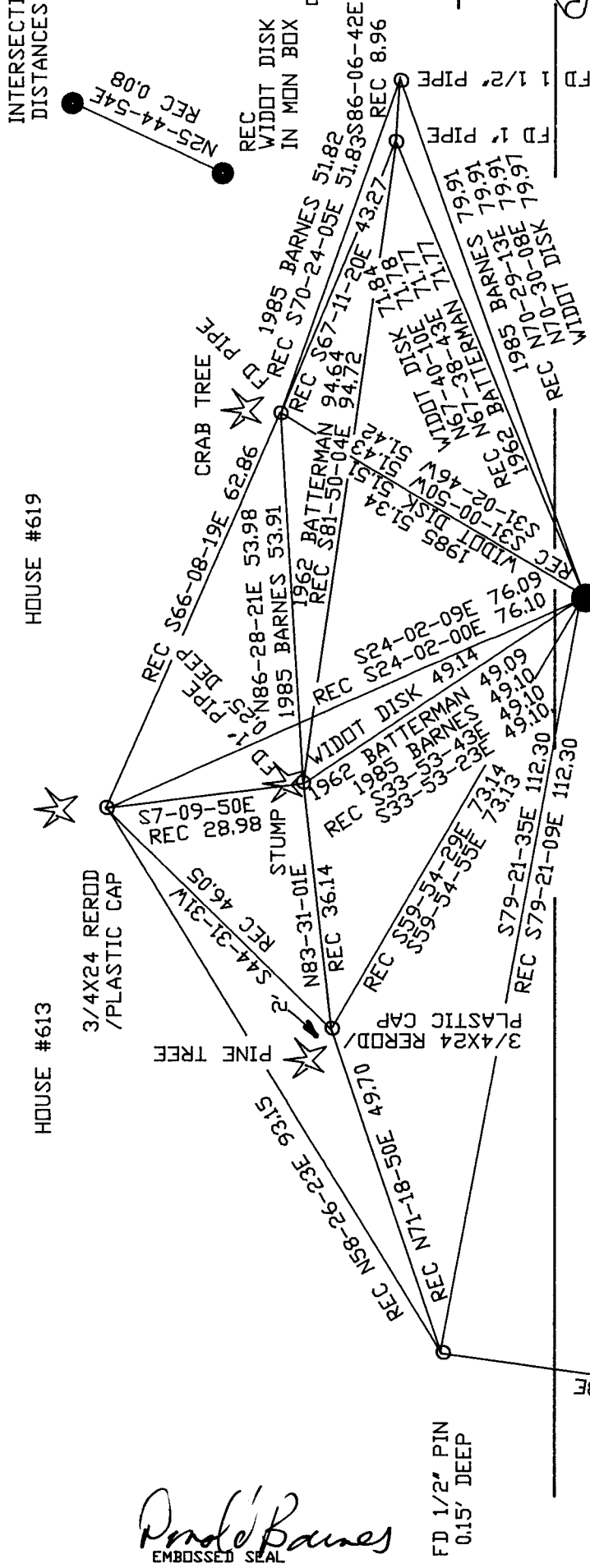
CORNER CODE

A.E. 7.08 REQUIREMENT

T-19(3)



INTERSECTION OF REC DISTANCES



NOT TO SCALE
MAJOR CUT IN OLD PVMT.
OBSERVATION SHEET

CENTER OF SEC 26
UNION TWP T4N R10E

STH 14

3/4X24" REROD/
PLASTIC CAP
IN FRONT OF RADIO SHACK

Pondle Barnes
EMBOSSSED SEAL

NOV 4 2005

SHEET 4 OF 5

T-19(3)

1833 DRIG 2623.50
 1870 RUGER REMON. VAR6-05 2650.56
 1875 RUGER VAR6-05 2650.56
 1883 RUGER VOL 2 PG 397 2652.41
 1907 KERCH VOL 3 PG 43 2655.1
 1938 SUNNY 2657
 1985 BARNES VDL 6 PG 340 N89-33-08E 2656.99

1833 DRIG 2623.50
 1870 RUGER VAR 7-09 2647.26
 1865 LOCKE 2641.84
 1833 DRIG 2640

2003 WIDDOT N00-47-10W 2668.75
 1985 BARNES N1-23-15W 1333.84
 1985 BARNES N1-27-22W 1334.79

1833 DRIG 2640
 1870 RUGER REMON 2662.52
 1882 RUGER 2663.10
 1907 KERCH VOL 3 PG 43 2667.40
 1985 BARNES VDL 6 PG 340 2668.63

2003 KIENBAUM BK 32-598 N89-07-08E 2641.16
 2003 WIDDOT #25087 N89-54-19E 2641.42
 2000 COMBS CSM 23-247 2641.28
 1999 KIENBAUM BK32-462 2641.16
 1998 KNUJSDON #MB177 N89-56-51E 2641.25
 1997 KIENBAUM BK32-390 2641.16
 1993 BIRREKOTT CSM VDL 16-378 N89-27-11E 2641.21
 1985 BARNES VOL 6 PG 340 N89-27-41E 2641.39
 1983 LEE CSM 11-320 2641.72
 1865 LOCKE VOL 1 PG 232 2628.64
 1856 CHURCH VOL 1 PG 63 2630.76
 1962 THOM #M5195 1320.95

1985 BARNES VDL 6 PG 340 N89-33-08E 2656.99
 1978 SHEAMAN #M5213 50-13-57E 2659.23
 1870 RUGER 2654.52
 1833 DRIG 2640

1985 BARNES VDL 6 PG 340 N89-30-44E 2623.95
 1978 SHEAMAN #M5213 50-13-57E 2659.23
 1870 RUGER REMON VAR 7-01 2619.87
 1833 DRIG 2601.72

1856 CHURCH VOL 1 PG 63 2655.84
 1865 LOCKE VOL 1 PG 232 2656.83
 1978 SHEAMAN #M5213 50-00-10E 2662.72
 1985 BARNES VDL 6 PG 340 N0-56-14W 2662.41
 1993 BIRREKOTT CSM 16-378 2662.11
 1998 KNUJSDON #MB177 50-26-16E 2662.31

1998 KNUJSDON #MB177 N89-52-41E 2622.82
 1993 BIRREKOTT CSM 16-378 N89-23-12E 2622.52
 1870 RUGER REMON VAR7-01 2619.87
 1833 DRIG 2601.72

1985 BARNES VDL 6 PG 340 N89-33-08E 2656.99
 1978 SHEAMAN #M5213 50-13-57E 2659.23
 1870 RUGER REMON VAR 7-01 2619.87
 1833 DRIG 2601.72

1985 BARNES VDL 6 PG 340 N89-30-44E 2623.95
 1978 SHEAMAN #M5213 50-13-57E 2659.23
 1870 RUGER REMON VAR 7-01 2619.87
 1833 DRIG 2601.72

1985 BARNES VDL 6 PG 340 N89-33-08E 2656.99
 1978 SHEAMAN #M5213 50-13-57E 2659.23
 1870 RUGER REMON VAR 7-01 2619.87
 1833 DRIG 2601.72

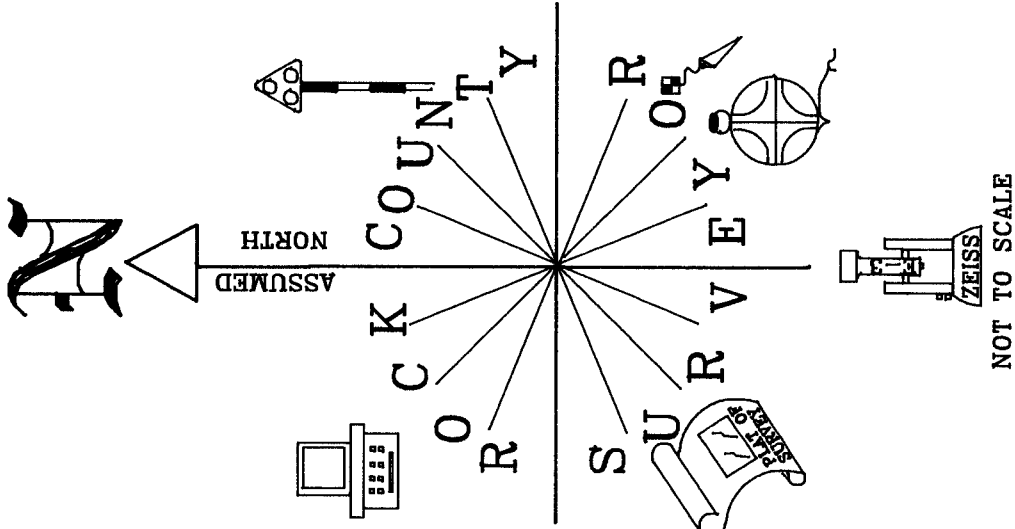
1985 BARNES VDL 6 PG 340 N89-30-44E 2623.95
 1978 SHEAMAN #M5213 50-13-57E 2659.23
 1870 RUGER REMON VAR 7-01 2619.87
 1833 DRIG 2601.72

1985 BARNES VDL 6 PG 340 N89-33-08E 2656.99
 1978 SHEAMAN #M5213 50-13-57E 2659.23
 1870 RUGER REMON VAR 7-01 2619.87
 1833 DRIG 2601.72

1985 BARNES VDL 6 PG 340 N89-30-44E 2623.95
 1978 SHEAMAN #M5213 50-13-57E 2659.23
 1870 RUGER REMON VAR 7-01 2619.87
 1833 DRIG 2601.72

1985 BARNES VDL 6 PG 340 N89-33-08E 2656.99
 1978 SHEAMAN #M5213 50-13-57E 2659.23
 1870 RUGER REMON VAR 7-01 2619.87
 1833 DRIG 2601.72

1985 BARNES VDL 6 PG 340 N89-30-44E 2623.95
 1978 SHEAMAN #M5213 50-13-57E 2659.23
 1870 RUGER REMON VAR 7-01 2619.87
 1833 DRIG 2601.72



1833 DRIG 2640
 1870 RUGER REMON VAR6-49 2654.36
 1993 BIRREKOTT CSM 16-378 N0-32-11W 2659.01
 1998 KNUJSDON #MB177 N0-02-28W 2659.07

1985 BARNES VDL 6 PG 340 S1-08-54E 2659.60
 1978 SHEAMAN #M5213 50-13-57E 2659.23
 1870 RUGER 2654.52
 1833 DRIG 2640

Dodd Barnes
 Nov 14 2005
 sheets of S T-19(3)