

Paper weight-110# (minimum)

Black nonfading ink required

U.S. PUBLIC LAND SURVEY MONUMENT RECORD

For Public Land Survey Corners In:
T. 4 N. R. 10 E. 4th P.M.

WI ADMINISTRATIVE CODE A-E 7.08 REQUIREMENT
REV 10/23/2004 USMONREC.DWG

CORNER CODE INDEX

UNION TWP

ROCK COUNTY WI

IF AVAILABLE
ROCK COUNTY COORDINATES PREFERRED

A	1	2	3	4	5	6	7	8	9	10	11	12	13	14	15	16	17	18	19	20	21	22	23	24	25	A
B			6				5				4				3			2				1				B
C																										C
D																										D
E																										E
F																										F
G																										G
H																										H
J																										J
K																										K
L																										L
M																										M
N																										N
O																										O
P																										P
Q																										Q
R																										R
S																										S
T																										T
U																										U
V																										V
W																										W
X																										X
Y																										Y
Z																										Z

North _____ Elev. _____

East _____

Hor. Datum _____ Vert. Datum _____

LATITUDE _____ ELLIPS. HT. _____

LONGITUDE _____

NAD83(91) _____ NETWORK ADJ. YR 2010 _____

GPS (X) _____ TRAVERSE (X) X

BASED ON THE FOLLOWING CONTROL:

PLACE MONUMENT SYMBOL AT PROPER LOCATION ON ABOVE INDEX

CORNER MONUMENT WITNESS MONUMENT

(a) BEARINGS ARE BASED ON: ROCK COUNTY PROJECTION

FIELD BOOK _____ PAGE # _____
OR OBSERVATION SHEET _____

SHEET 1 OF 4

SHOW A PLAN VIEW DRAWING DEPICTING THE CORNER MONUMENT AND SURROUNDING PHYSICAL FEATURES, INCLUDING THE EXCAVATION AREA AND DEPTH.

PLANNING & ZONING COMMITTEE ADOPTED THIS FORM ON 12/2/1982

CORNER CODE R-90

UN585 NECORSEC29

(B) Describe any record evidence, monument evidence, occupational evidence, testimonial evidence or any other material evidence you considered, and whether the monument was found or placed.

1833 HARRISON T4N R10E 4TH MER NORTH BET. SECS 28 & 29
1555.62 WO 18
2640.00 QUARTER SEC COR. {WO 12 S79E 24.42'; WO
18 W 12.54' WO 12 & WO 18} MARKED
5280.00 COR TO SECS 20,21,28,29 {BURR O 10 S64E
273.24'; BURR O 12 S60W 234.96' LAND LEVEL
2ND RATE TIMBER BURR RED & W.O.
UNDERGROWTH SCRUBS, GRASS, & WEEDS.

1833 HARRISON T4N R10E 4TH MER EAST BET. SECS 21 & 28
2640.00 TEMPY 1/4 SEC COR
5272.08 INT. E BDY 4.62' S OF P LAND ROLLING 2ND
RATE TIMBER ?? RED O ???
WEST COR WEST BET 21 & 28
2636.04 QUARTER SEC COR {RED O 10 S64E 33.66';
RED O 12 N53E 13.20' RED O 10 & RED O
12} MARKED
5272.08 SEC COR

1833 HARRISON T4N R10E 4TH MER EAST BET. SECS 20 & 29
2640.00 TEMPY SEC COR
5016.0 LEAVE PRAIRIE & ENTER TIMBER
5291.88 INT. E BDY AT P
LAND ROLLING 1ST RATE PRAIRIE SOIL GOOD-
UNDERGROWTH GRASS & WEEDS
WEST COR WEST BET SECS 20 & 29
2645.94 QUARTER SEC COR {SET A POST & RAISED A
MOUND
5291.88 SEC COR.

1833 HARRISON T4N R10E 4TH MER NORTH BET. SECS 20 & 21
1383.36? ASPEN 12
2280.96 BROOK 9.24' CRS SE & ENTER PRAIRIE 330' SE
MITCHE'S TRADING HOUSE.
2640.00 QUARTER SEC COR. SET POST & RAISED MOUND
4950.00 LEAVE PRAIRIE & ENTER TIMBER
5280.00 COR TO SECS 16,17,20,21 {BURR O 10 N41E
64.68'; BURR O 12 S22E 121.44'; BURR O 18
S44W 27.72'; BURR OAK 12 N38W 116.16'
LAND LEVEL & WET 2ND RATE TIMBER BURR O &
RED O. UNDERGROWTH SCRUBS, GRASS &
WEEDS.

1870 RUGER AUG REMON-77 SOUTH ON WEST LINE OF NW
1/4 SEC 28 ON A VAR 7-05 OFFSET EAST 1.98' AT
2665.41 INTERSECTED QUARTER LINE 5.94' EAST OF
QUARTER CORNER. FOUND OLD STAKE AND BOTH
STUMPS OF BEARING TREES. COR VAR 7-00'
SOUTH ON WEST LINE OF SW 1/4 SEC 28
ON A VAR 7-20 OFFSET EAST 11.22'
OFFSET WEST 19.14' OFFSET EAST 17.16'
AT
2661.28 INTERSECTED SOUTH BOUNDARY LINE 4.62'
WEST OF CORNER FOUND STUMPS OF BOTH
BEARING TREES. ESTABLISHED CORNER FROM
STUMPS OF BEARING TREES. COR VAR 7-38

1870 RUGER AUG REMON-76 WEST ON NORTH LINE OF NE 1/4
SEC 28 ON A VAR 7-00 COULD FIND NO TRACE
OF QUARTER CORNER. IT HAVING BEEN PLACED
CONSIDERABLY TOO FAR EAST BY THE U.S.
SURVEYORS AND SUBSEQUENTLY DESTROYED IN
CONSEQUENCE BY PARTIES INTERESTED AS I
WAS CREDIBLY INFORMED. CONTINUED WEST
ON NORTH LINE OF NW 1/4 ON VAR AS ABOVE
GIVEN AT


SEAL

EMBOSSE

SHEET 1 OF 4
CORNER CODE R-9(1)

Aug 18, 2011

UN585 NECORSEC29

- 5277.36 INTERSECTED WEST BOUNDARY LINE AT CORNER. ESTABLISHED NORTH QUARTER CORNER AT A POINT IN A TRUE LINE BETWEEN AND EQUI-DISTANT FROM THE NE & NW CORNERS OF SAID SECTION. IT BEING 2638.68 DISTANT FROM EACH.
- 1870 RUGER AUG REMON-95 EAST ON SOUTH LINE OF SW 1/4 SEC 20 ON A VAR 7-45 AT
2643.30 INTERSECTED QUARTER LINE AT QUARTER CORNER FOUND REMAINS OF OLD STAKE AT CORNER.
EAST ON SOUTH LINE OF SE 1/4 SEC 20 ON A VAR 8-20; AT
2657.82 INTERSECTED EAST BOUNDARY LINE AT CORNER. ESTABLISHED CORNER FROM NE BEARING TREE.
- 1870 RUGER AUG 29 REMON-95 SOUTH ON EAST LINE OF NE 1/4 SEC 20 ON A VAR 6-22; OFFSET EAST 7.26' AT
2645.94 INTERSECTED QUARTER LINE 5.94' WEST OF QUARTER CORNER. FOUND OLD STAKE AT CORNER. COR VAR 6-39 AUGUST 29, 1870
SOUTH ON EAST LINE OF SE 1/4 SEC 20 ON A VAR 6-22; OFFSET WEST 5.94' OFFSET EAST 4.29' OFFSET WEST 4.29' AT
2641.98 INTERSECTED SOUTH BOUNDARY LINE 6.73' WEST OF CORNER. COR VAR 7-42
- 1890 BLEEDORN VOL 2 PG 431 MON 2640.00 TO S 1/4 COR SEC 21 & 2642.64 TO W 1/4 COR SEC 21
- 1891 BLEEDORN VOL 2 PG 459 MON. 2647.26 TO S 1/4 COR SEC 20 & 2647.92 TO E 1/4 COR SEC 20.
- 1936 SUNNY VOL 3 PG 302 DUG 7X7 HOLE FD NOTHING. ROAD CUT DOWN BELOW ORIGINAL SURFACE 3' +/-.
- 1963 BATTERMAN VOL 4 PG 246 DUG & FD NOTHING. SEE VOL4 PG 289
- 1966 BATTERMAN VOL 4 PG 289 STATES NOTHING MON. REF COR. 2673.60 [RUGER 2665.41] TO CUT STONE @ W 1/4 COR SEC 28 & 2642.78 TO FD STONE @ N 1/4 COR SEC 28
- 1966 BATTERMAN VOL 4 PG 289 **BELOIT SET** SAME AS JANESVILLE SET EXCEPT THE BELOIT SET CONTAINS THE STATEMENT "RESET COR AS SET BY RUGER. SEE RESURVEY NOTES"
- 1968 BATTERMAN VOL 4 PG 385 SEE PG 289 R/R SPIKE. REF SAME. TRUE BEARING DUE WEST TO S 1/4 COR SEC 21
- 1971 THOM CSM VOL 2 PG 17 FD MON.
- 1979 KIENBAUM VOL 5 PG 523 FD STONE.
- 1982 BARNES VOL 6 PG 288 S88-59-10W 2660.17 TO S 1/4 COR SEC 20, EAST 2643.06 TO S 1/4 COR SEC 21, & NO-50-28W 2646.61 TO E 1/4 COR SEC 20
- 1982 BARNES R-9 FD R/R SPIKE @ PVMT CENTER. REFERENCED SAME. CHECKS WITH TIES IN VOL 4 PG 289
- 1999 COMBS CSM VOL 22 PG 445 FD R/R SPIKE 2660.25 TO FD R/R SPIKE @ N 1/4 COR SEC 29
- 1999 COMBS #7377 R/R SPIKE 2673.58 TO STONE MON. @ W 1/4 COR SEC 28
- 2007 COMBS CSM VOL 31 PG 304 FD PK @ SW COR SEC 21. 2643.06 TO FD PIN @ S 1/4 COR SEC 21
- 2008 COMBS CSM VOL 32 PG 265 FD R/R SPIKE 2643.05 TO FD PIN @ S 1/4 COR SEC 21.

Donald
SEAL
Pauses
EMBOSS

Aug 18 2011

SHEET 2 OF 4
CORNER CODE R-9(1)

UN585 NECORSEC29

2011 DEJONG #??? FD R/R SPIKE 2643.12 TO COUNTY MONUMENT
PER TIES @ S 1/4 COR SEC 21.

FD R/R .7 SOUTH OF NORTH PVMT EDGE. IS IN HARMONY WITH NE
REFERENCE PIPE & OLD TRAVERSE DATA.

C) Was the corner restored through acceptance of (1) an obliterated evidence location, or, (2) a found
perpetuated location?

ACCEPTED FD R/R

THE R/R SPIKE IS 0.12 OFF LINE BETWEEN SW & S 1/4 COR SEC 20
& 0.2 OFF LINE BETWEEN THE S 1/4 COR SEC 21 & SE COR SEC 21.
THE E/W PRORATION IS WITHIN 1' OF THE R/R SPIKE AND THE N/S
PRORATION SHOWS THE CORNER MIGHT BE 6.76 SOUTH OF THE
R/R. I DID NOT EXCAVATE BECAUSE IN 1936 SUNNY (VOL 3 PG 302)
DUG A 7X7 HOLE FD NOTHING AND IN 1963 BATTERMAN (VOL 4 PG
246) DUG & FD NOTHING. SUNNY ALSO STATED THE ROAD WAS +/-3
BELOW THE ORIGINAL GROUND. IF THE PAVEMENT IS REMOVED
DURING A ROAD CONSTRUCTION PROJECT, THE CUT LIMESTONE
SHOULD BE EXCAVATED FOR.

D) Describe any material discrepancy between the location of the corner as restored or reestablished
and the location of that corner as previously restored or reestablished by distance and direction. Show
the discrepancy on the plan view drawing under (a), above. Show the distances between the corner as
previously restored or reestablished and (1) the corner as restored or reestablished, and (2) to at least 4
of the witness monuments shown on the drawing in (a), above.

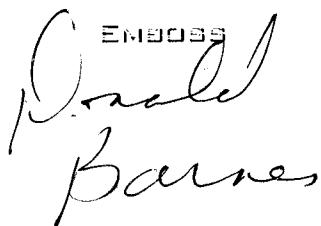
THERE IS A CONFLICT WITH KIENBAUM'S 1979 VOL 5 PG 523
STATEMENT THAT HE FD STONE AND BATTERMAN'S 1963 VOL 4 PG
246 STATEMENT THAT HE DUG & FD NOTHING. SEE VOL4 PG 289

(E) Was the corner reestablished through lost corner proportionate methods? If so, show the method,
including the directions and distances to other public land survey corners used as evidence or used for
proportioning the corner location.

I, **Donald Barnes**, hereby certify that the corner location as identified by the corner code index
was determined by me under my direction and control and that this U.S. Public Land Survey
Monument Record is correct and complete to the best of my knowledge and belief.

SEAL

SHEET 3 OF 4

EMBOSS


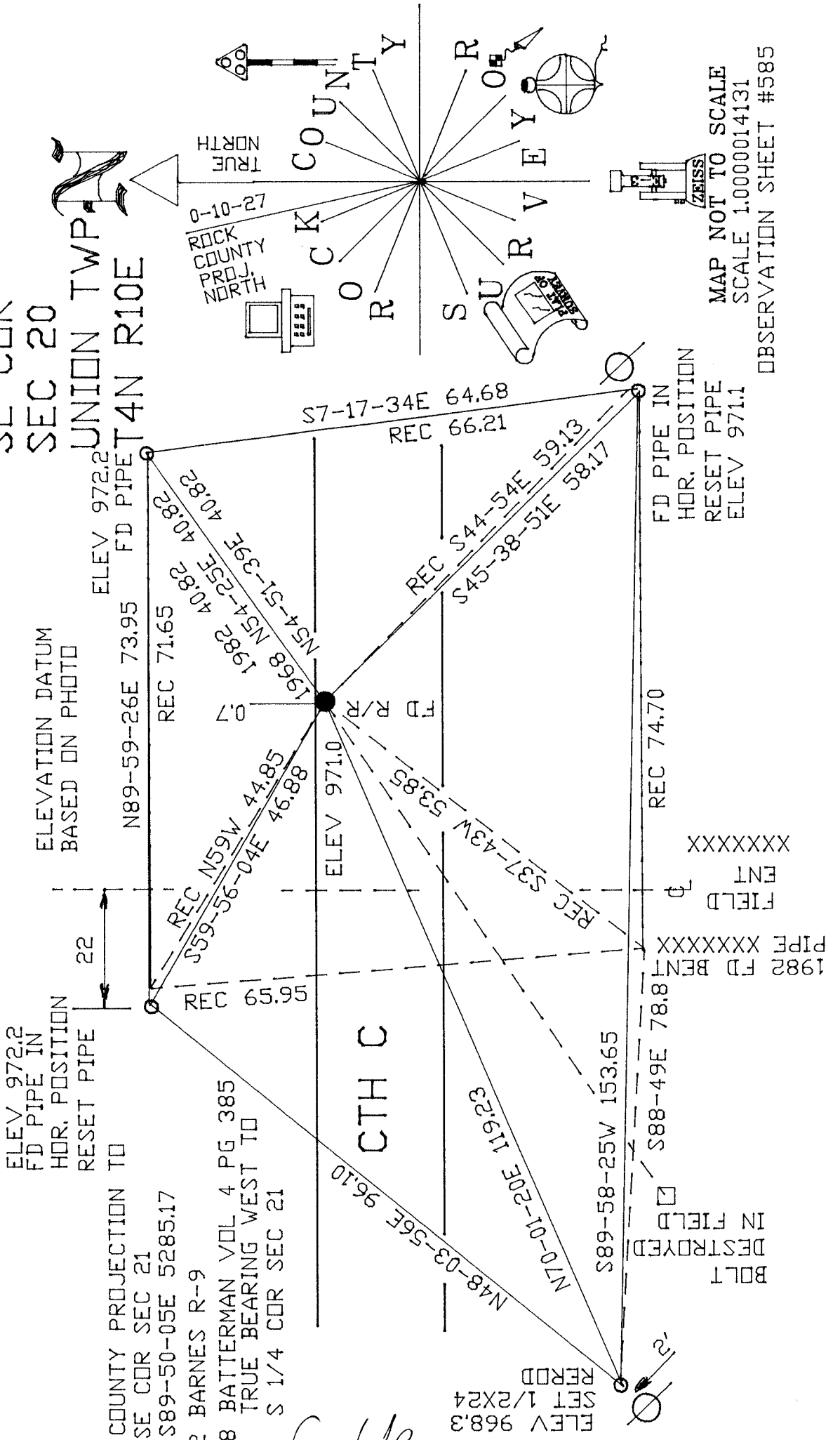
CORNER CODE

R-9(1)

A.E. 7.08 REQUIREMENT

Aug 18 2011

SE COR
SEC 20
UNION TWP
R10E



ELEVATION DATUM
BASED ON PHOTO

ELEV 972.2
FD PIPE IN
HOR. POSITION
RESET PIPE

COUNTY PROJECTION TO
SE COR SEC 21
S89-50-05E 5285.17
1982 BARNES R-9
1968 BATTERMAN VOL 4 PG 385
TRUE BEARING WEST TO
S 1/4 COR SEC 21

Don Barnes
EMBOSSSED
SEAL
Aug 17, 2011

SHEET 4 OF 4

R-9 (1)

MAP NOT TO SCALE
SCALE 1.0000014131
OBSERVATION SHEET #585

FD PIPE IN
HOR. POSITION
RESET PIPE
ELEV 971.1

BOLT
DESTROYED
IN FIELD
PIPE XXXXXXXX
FIELD ENT
XXXXXXXX