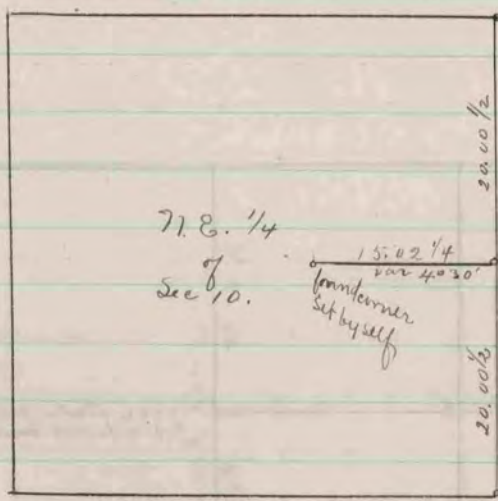


49-162



Found old stake & N.W. B.T. put in place of old stake new stake deep 7 on top of it hard head stone 16x15x11

Found hard headstone set by self in w. former survey.

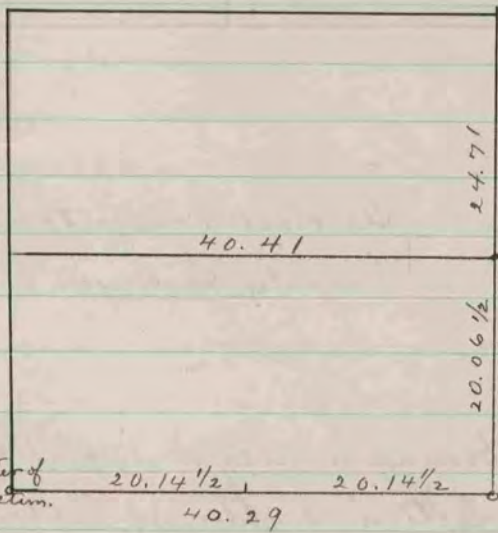
Found old stake & small hard head stone, also stump of S.E. B.T. & remains of stump of N.E. B.T. Drove new stake in place of old, & surrounded by 4 hard head stones. Took new B.T.'s -
14 W.O. 85 50 1/2 E.
13 E.O. 7 71.26 W. 55-

- see page 15 -

The above is a record & plat of a survey made by me on the N.E. 1/4 of Section 10 Jamesville. Nov. 26, 1887.

Edward Rieger
County Surveyor

47-276



Found corner set by self

Found corner set by self

- see page 194 -

The above is a record & plat of a survey made by me on the N.E. 1/4 of Section 3 Jamesville. Dec. 11 & 12, 1886.

Edward Rieger
County Surveyor

COUNTY SURVEYOR
RECORD 2 1869-1900