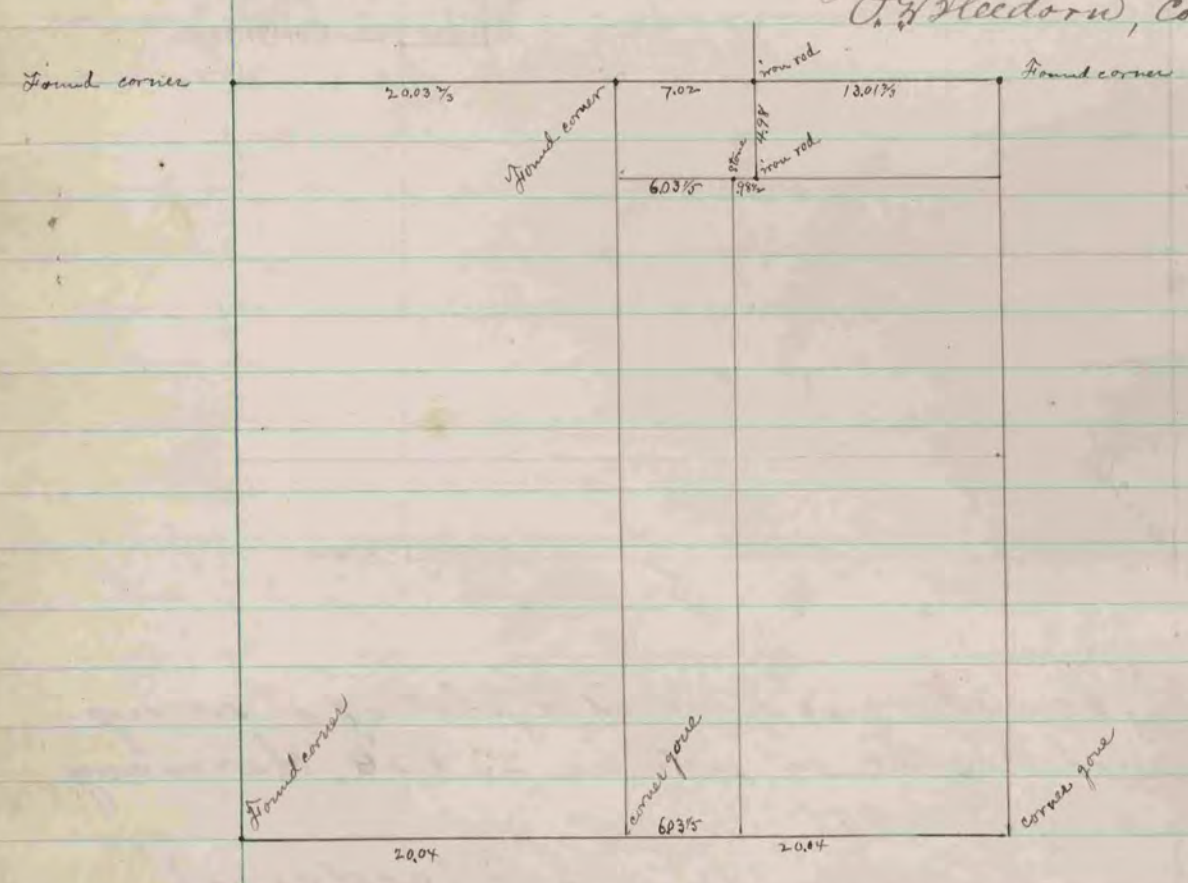


The above is a record and plat of a survey made by me  
 on the SE 1/4 section 30 Harmony Aug. 21, 1891  
 O. G. Bleedorn, County Surveyor



The above is a record and plat of a survey made by me  
 on NW 1/4 section 12 Rock on Sept 2 1891  
 O. G. Bleedorn,  
 County Surveyor

COUNTY SURVEYOR  
 RECORD 2 1869-1900