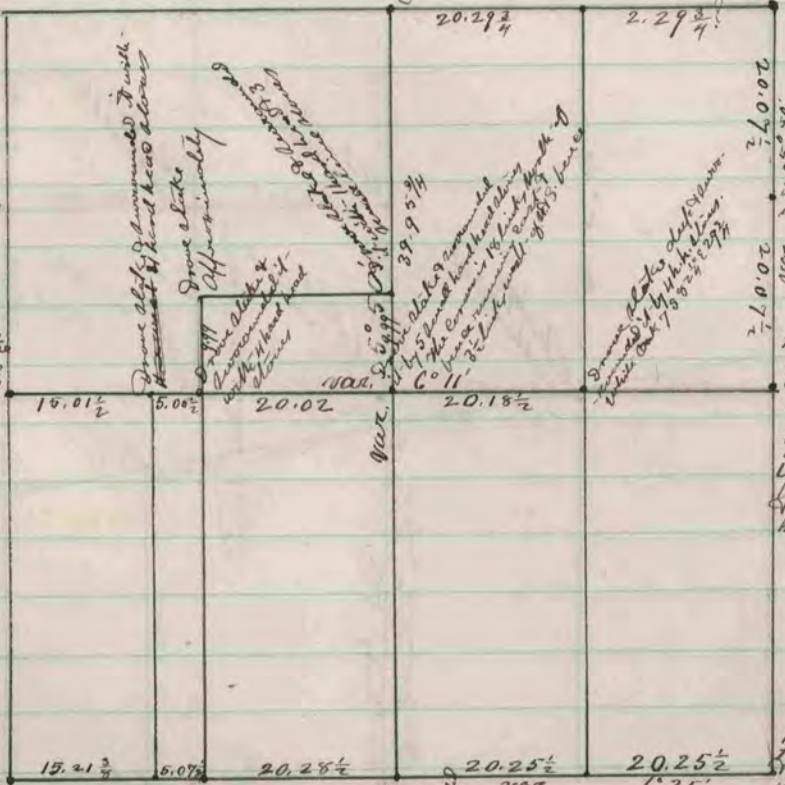


Found remains of old stakes & stump of M. E. B. J. Found new stakes in place of old ones & surrounded it with several stones



Found old stake - Drive new stakes in place of old ones, surrounded it with 4 hand head stones

Drive stake & first hand head stone in E. of ed. holes - Drive stake & surrounded it with 3 hand head stones

Found remains of old stake & hand head stone just west of line stone just East - drove new stake in place of old one & surrounded it with 4 hand head stones

Drive stake & surrounded it by 4 hand head stones

Found hand head stone remains of old stake under it. Drive new stake in place of old one & surrounded it with 4 hand head stones

Found old stake & stump of S. E. B. J. where stump of S. W. B. J. had been - surrounded stake with 4 hand head stones

Found last post at corner, also found stump of M. E. B. J. surrounded post by 7 small stones

Drive stake & surrounded it with 2 hand head stones

Found stump of B. J. right on 15 bearing, but had to use distance given in notes to S. E. B. J. and in the corner. Distances given in notes to S. W. B. J. in bearing from S. E. B. J. around stake & surrounded it with 4 hand head stones

The above is a record and plat of a survey made by me on section 15 Center April 7th 8-1875

Edward Rugeor
County Surveyor

COUNTY SURVEYOR
RECORD 2 1869-1900