

U.S. PUBLIC LAND SURVEY MONUMENT RECORD

For Public Land Survey Corners In:

WI ADMINISTRATIVE CODE A-E 7.08 REQUIREMENT

T. 2N. R. 12E. 4th P.M.

REV 10/23/2004

USMONREC.DWG

CORNER CODE INDEX

1	2	3	4	5	6	7	8	9	10	11	12	13	14	15	16	17	18	19	20	21	22	23	24	25	
A																									A
B	6					5				4				3				2			1				B
C																									C
D																									D
E																									E
F	7					8				9				10				11			12				F
G																									G
H																									H
J																									J
K	18					17				16				15				14			13				K
L																									L
M																									M
N																									N
O																									O
P	19					20				21				22				23			24				P
Q																									Q
R																									R
S																									S
T																									T
U																									U
V																									V
W																									W
X	30					29				28				27				26			25				X
Y																									Y
Z																									Z
1	2	3	4	5	6	7	8	9	10	11	12	13	14	15	16	17	18	19	20	21	22	23	24	25	

Rock

TWP

ROCK COUNTY WI

IF AVAILABLE

ROCK COUNTY COORDINATES PREFERRED

North _____ Elev. _____

East _____

Hor. Datum _____ Vert. Datum _____

LATITUDE _____ ELLIPS. HT. _____

LONGITUDE _____

NAD83(91) _____ NETWORK ADJ. YR 2010

GPS (X) _____ TRAVERSE (X) X

BASED ON THE FOLLOWING CONTROL:

PLACE MONUMENT SYMBOL AT PROPER LOCATION ON ABOVE INDEX

CORNER MONUMENT

WITNESS MONUMENT

(a) BEARINGS ARE BASED ON: ROCK COUNTY PROJECTION

FIELD BOOK _____ PAGE # _____

OR OBSERVATION SHEET _____

SHEET 1 OF 2

SHOW A PLAN VIEW DRAWING DEPICTING THE CORNER MONUMENT AND SURROUNDING PHYSICAL FEATURES, INCLUDING THE EXCAVATION AREA AND DEPTH.

PLANNING & ZONING COMMITTEE ADOPTED THIS FORM ON 12/2/1982

CORNER CODE C-21(1)

R0519

(B) Describe any record evidence, monument evidence, occupational evidence, testimonial evidence or any other material evidence you considered, and whether the monument was found or placed.

I WAS CONTACTED ABOUT THE PUBLISHED COORDINATE NOT CHECKING WITH THE REFERENCE MONUMENTS. AFTER I REVIEWED THE FIELD NOTES, OBSERVATION SHEETS, THE REFERENCE TIES, AND THE 2010 DATA ADJUSTMENT FILE I FOUND A BLUNDER IN THE DATA ADJUSTMENT ENTRY. THE TIES WERE CORRECT. I ADDED ADDITIONAL DATA TO THE DRAWING. THE COORDINATES ON THE WEBSITE WERE IN ERROR.

(C) Was the corner restored through acceptance of (1) an obliterated evidence location, or, (2) a found perpetuated location?

ACCEPTED PREVIOUS MONUMENT RECORD.

(D) Describe any material discrepancy between the location of the corner as restored or reestablished and the location of that corner as previously restored or reestablished by distance and direction. Show the discrepancy on the plan view drawing under (a), above. Show the distances between the corner as previously restored or reestablished and (1) the corner as restored or reestablished, and (2) to at least 4 of the witness monuments shown on the drawing in (a), above.

(E) Was the corner reestablished through lost corner proportionate methods? If so, show the method, including the directions and distances to other public land survey corners used as evidence or used for proportioning the corner location.

NO

I, **Donald Barnes**, hereby certify that the corner location as identified by the corner code index was determined by me under my direction and control and that this U.S. Public Land Survey Monument Record is correct and complete to the best of my knowledge and belief.

Donald
SEAL
Barnes
Emboss

SHEET 1 OF 2

Jan 4, 2011

CORNER CODE **C-21(1)**

A.E. 7.08 REQUIREMENT

E 1/4 COR
 SEC 2
 ROCK TWP
 T2N R12E

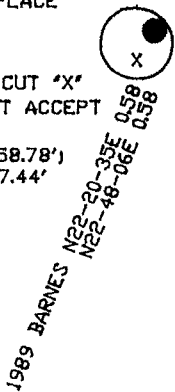
2010 ADJUSTMENT
 262,887.75) 491,021.25

1989 FD DISK
 ON TOP OF SE COR
 OF BRIDGE

1989 FD 1' PIPE

2010 ADJ.
 1/4 COR
 262,359.32')
 490,997.67' E/W

DID NOT PLACE
 MONUMENT
 MAN HOLE
 COVER
 1989 FD CUT 'X'
 & DID NOT ACCEPT
 'X'
 'X' 262,358.78')
 490997.44'



STATE ST

S89-00-39W 2856.03
 1329NH JANEVILLE RM 3
 2010 ADJ.
 262,310.01') 488,142.06'
 DISK/CONC. MON.

1989 FD 2' PIPE

S60-24-03W 3,412'
 WCLD TOWER
 N50-52-01E 57.76
 N50-13-58E 57.76
 1989 0.55
 FD BENT 1' PIPE

NEW BEARINGS & DISTANCES
 ARE BASED ON 1989
 OBSERVATIONS &
 2010 ADJUSTMENT

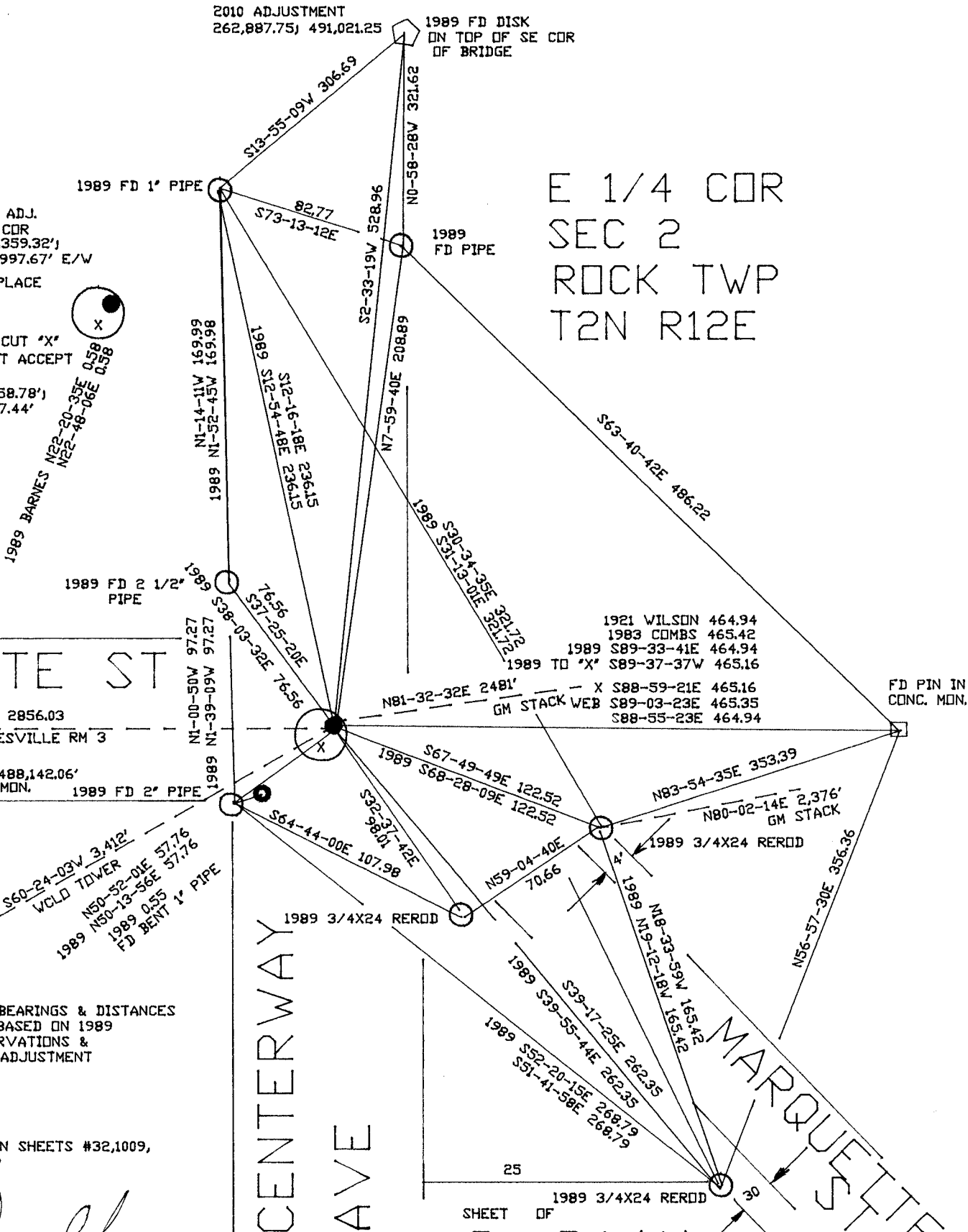
OBSERVATION SHEETS #32,1009,
 1010,1011,1519

Daryl Barnes
 1/4/2011

CENTERWAY
 AVE

MARQUETTE

SHEET OF
 C-21(1)



1921 WILSON 464.94
 1983 COMBS 465.42
 1989 S89-33-41E 464.94
 1989 TO 'X' S89-37-37W 465.16
 'X' S88-59-21E 465.16
 GM STACK WEB S89-03-23E 465.35
 S88-55-23E 464.94

FD PIN IN
 CONC. MON.

1989 3/4X24 REROD