

U.S. PUBLIC LAND SURVEY MONUMENT RECORD

For Public Land Survey Corners In:

WI ADMINISTRATIVE CODE A-E 7.08 REQUIREMENT

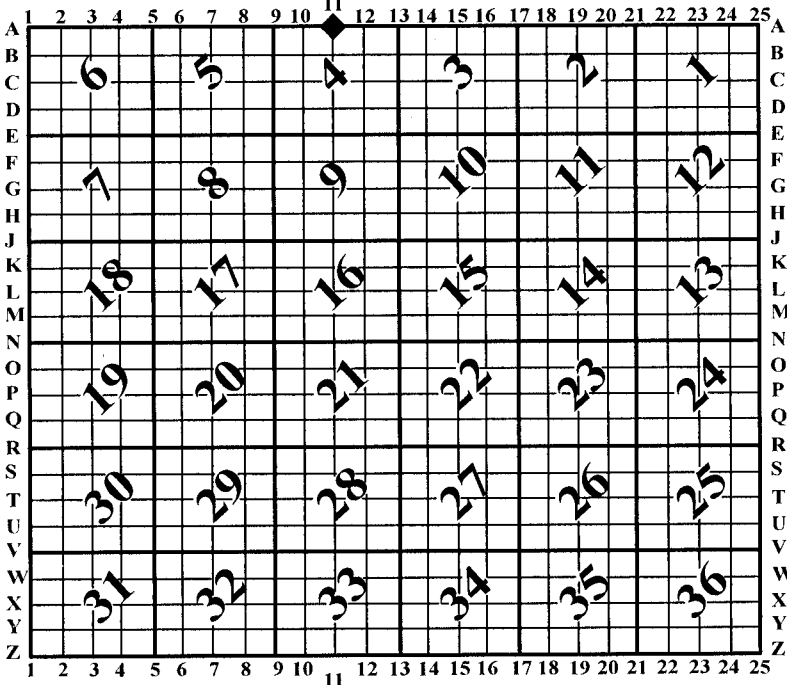
T. 2 N. - R. 12 E. of the 4th P.M.

CORNER CODE INDEX

ROCK TWP

ROCK COUNTY WI

(PLACE "◆" SYMBOL AT PROPER PLSS CORNER LOCATION)



COORDINATES

(GNSS DERIVED VIA WISCORS)

NORTHING: 265105.34 ELEV:

EASTING: 477625.64

Hor. Datum: WCCS-ROCK, NAD83 (NA2011)

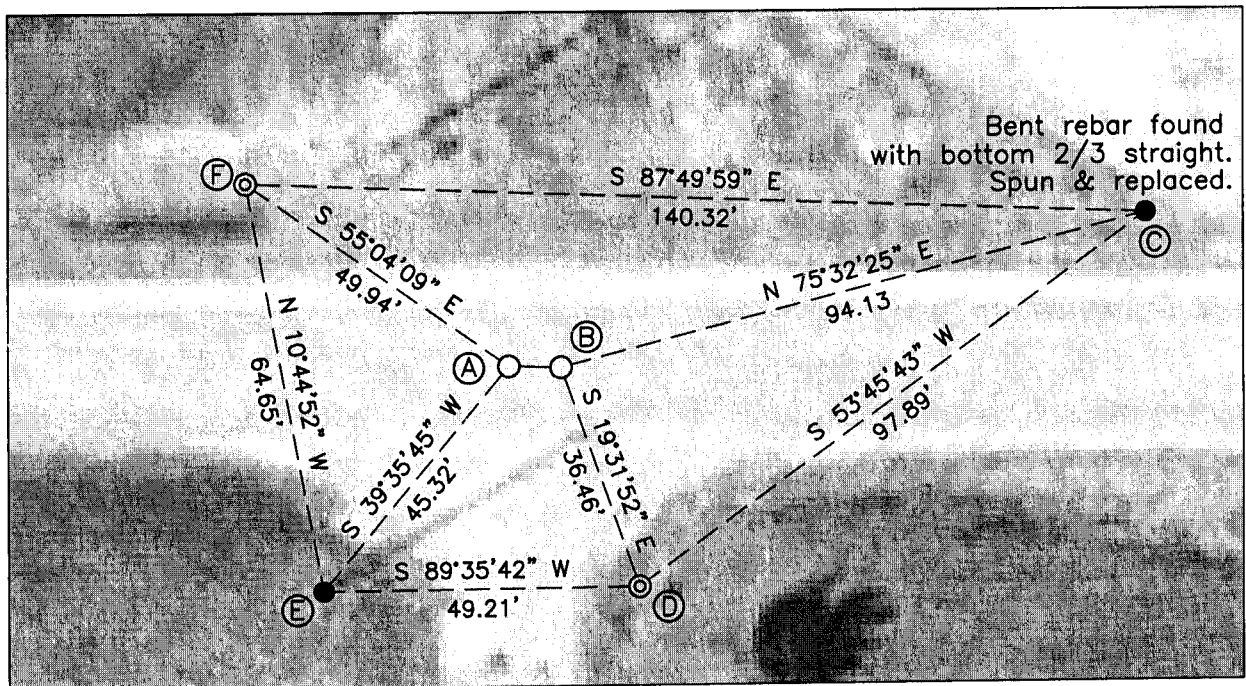
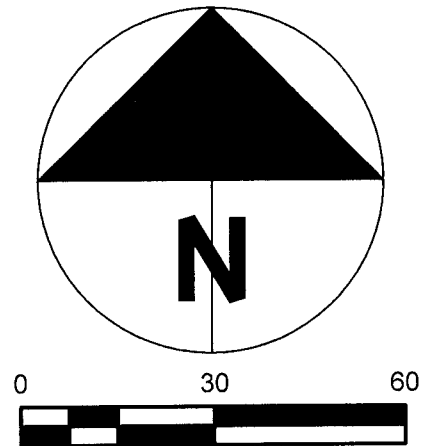
Vertical Datum: NAVD 88

(a) LEGEND

- - 5/8" x 24" REBAR SET, (RED CAP W/"PLSS WITNESS")
- - COTTON GIN SPINDLE SET
- ⊙ - IRON REBAR FOUND
- ⊙ - IRON PIPE FOUND
- ⓑ - S1/4, 33-3-12, 628J
- ⓐ - N1/4, 4-2-12, 506R

LINE TABLE:

| LINE | BEARING | DISTANCE | RECORD |
|------|---------------|----------|--------|
| A-B | S 88°30'11" E | 8.14' | 8.14' |
| A-C | N 76°47'52" E | 101.97' | 102.01 |
| A-D | S 30°27'05" E | 40.11' | 40.36 |
| B-E | S 46°50'50" W | 50.75' | |
| B-F | N 59°35'21" W | 56.91' | 56.91' |



B) Describe any record evidence, monument evidence, occupational evidence, testimonial evidence or any other material evidence you considered, and whether the monument was found or placed.

This area has been recently paved over and it believed, based on a metal detector, that the former monuments, (Pipe in monument box and polystyrene monument), still exist below the surface. This location has been well documented on former tie-sheets with the most recent modern monument originally set by Batterman in 1970, which may be construed as the "original" as no other resurveys indicate a found monument at this location. Barnes set a polystyrene monument 1981 location over the pipe. Rather than dig holes in the asphalt, which creates an on-going maintenance issue, old ties were recovered that check well and the corner position was determined from them. A cotton gin spindle was set, as shown on the sketch, which very closely approximates the strongest audible signal from the metal detector.

C) Was the corner restored through acceptance of (1) an obliterated evidence location, or, (2) a found perpetuated location?

Found perpetuated location based on former tie-sheets and metal detector signal.

D) Describe any material discrepancy between the location of the corner as restored or reestablished and the location of that corner as previously restored or reestablished by distance and direction. Show the discrepancy on the plan view drawing under (a), above. Show the distances between the corner as previously restored or reestablished and (1) the corner as restored or reestablished, and (2) to at least 4 of the witness monuments shown on the drawing in (a), above.

Any discrepancies between former and current measurements on tie-sheets are within acceptable tolerances considering the measuring methods used. My measuring methodology is as follows:

- Baseline control was set with the Carlson GNSS rover utilizing WISCORS, (2 duranails).
- The nails were occupied with a robotic total station and backsight.
- All monuments were tied and/or set via prism pole and data collector.
- Raw field data is contained within the file folder stored digitally at the County Surveyors office.

There are some questions relative to the location of this monument. As can best be determined, Batterman's 1970 pipe was set based on the offset distances between section 4, (Rock), and 33, (Janesville), shown on the original gov.t sketch of Rock Township. As Ruger and Barnes note, this position is not at the "split" of the NW & NE corners of section 4. The split yields a position roughly 6 feet East of the monument. Given the history of the corner and it being noted/used on past surveys, I accept the position of the location determined by Batterman in 1970.

NOTE: This location has been misidentified on a previous tie-sheet as the S1/4 of Sec. 33-3-12, (Barnes-1986-Janesville Z-11), however was corrected by the same in 1996, (Janesville Z-11) & 1990, (Rock A-11). A WDOT plan set, (Proj. No. 1704-05-21), contains the same error but, will be corrected on a future document to be filed with this office. A similar situation exists on a subdivision plat, (Combs), which may have an affidavit of correction filed. Recent misidentifications may or may not be the result of the 1986 tie-sheet being copied prior to the corrections and then relying on that same sheet in recent years without being cognizant of the corrections.

(E) Was the corner reestablished through lost corner proportionate methods? If so, show the method, including the directions and distances to other public land survey corners used as evidence or used for proportioning the corner location.

N/A

I, Jason R. Houle, hereby certify that the corner location as identified by the corner code index was determined by me under my direction and control and that this U.S. Public Land Survey Monument Record is correct and complete to the best of my knowledge and belief.

CORNER CODE: A-11(3)
(A.E. 7.08 REQUIREMENT)

