

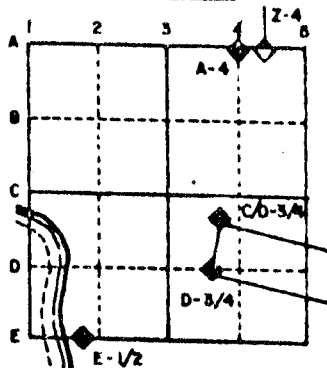
U.S. PUBLIC LAND SURVEY MONUMENT RECORD

For Public Land Survey Corners in the
T. 2 N., R. 12 E.

CORNER CODE INDEX

| | | | | | | | | | | | | | | | | | | | | | | | | | |
|---|---|---|---|---|---|---|---|---|---|----|----|----|----|----|----|----|----|----|----|----|----|----|----|----|----|
| | 1 | 2 | 3 | 4 | 5 | 6 | 7 | 8 | 9 | 10 | 11 | 12 | 13 | 14 | 15 | 16 | 17 | 18 | 19 | 20 | 21 | 22 | 23 | 24 | 25 |
| A | | | | | | | | | | | | | | | | | | | | | | | | | |
| B | | | | | | | | | | | | | | | | | | | | | | | | | |
| C | 6 | | | | | | | | | | | | | | | | | | | | | | | | |
| D | | 5 | | | | | | | | | | | | | | | | | | | | | | | |
| E | | | 4 | | | | | | | | | | | | | | | | | | | | | | |
| F | | | | 3 | | | | | | | | | | | | | | | | | | | | | |
| G | | | | | 2 | | | | | | | | | | | | | | | | | | | | |
| H | | | | | | | | | | | | | | | | | | | | | | | | | |
| I | | | | | | | | | | | | | | | | | | | | | | | | | |
| J | | | | | | | | | | | | | | | | | | | | | | | | | |
| K | | | | | | | | | | | | | | | | | | | | | | | | | |
| L | | | | | | | | | | | | | | | | | | | | | | | | | |
| M | | | | | | | | | | | | | | | | | | | | | | | | | |
| N | | | | | | | | | | | | | | | | | | | | | | | | | |
| O | | | | | | | | | | | | | | | | | | | | | | | | | |
| P | | | | | | | | | | | | | | | | | | | | | | | | | |
| Q | | | | | | | | | | | | | | | | | | | | | | | | | |
| R | | | | | | | | | | | | | | | | | | | | | | | | | |
| S | | | | | | | | | | | | | | | | | | | | | | | | | |
| T | | | | | | | | | | | | | | | | | | | | | | | | | |
| U | | | | | | | | | | | | | | | | | | | | | | | | | |
| V | | | | | | | | | | | | | | | | | | | | | | | | | |
| W | | | | | | | | | | | | | | | | | | | | | | | | | |
| X | | | | | | | | | | | | | | | | | | | | | | | | | |
| Y | | | | | | | | | | | | | | | | | | | | | | | | | |
| Z | | | | | | | | | | | | | | | | | | | | | | | | | |

EXAMPLE



ROCK TWP
ROCK COUNTY WI

IF AVAILABLE
STATE PLANE COORDINATES

NAD North (Y) 246,279.69 Eleve. (Z) _____
27 East (X) 2,252,489.72 Zone _____

Hor. Datum _____ Vert. Datum _____

PLACE MONUMENT SYMBOL (◆) AT PROPER
LOCATION ON ABOVE INDEX
246,279.80
2,252,489.64

JANESVILLE PROJECT

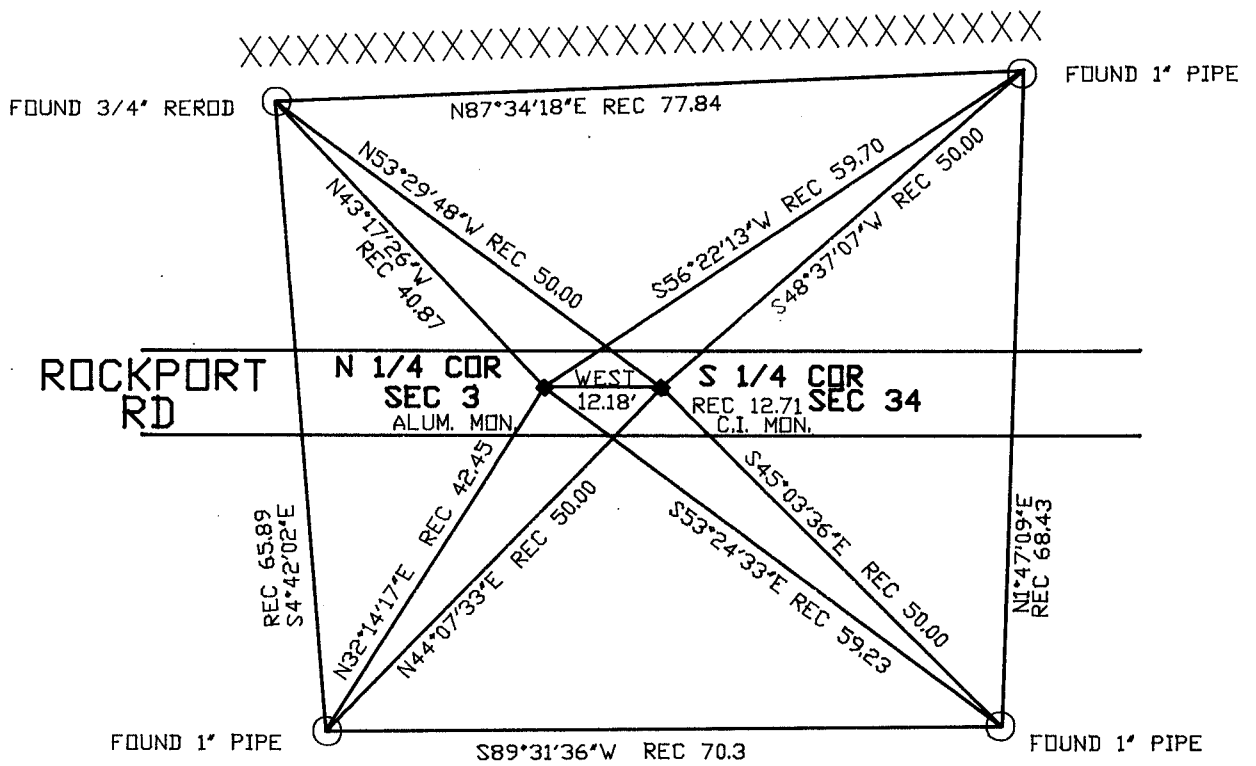
WPL
246,278.53
2,252,489.68

◆ CORNER MONUMENT

○ WITNESS MONUMENT

SCHNEEBERGER
246,278.63
2,252,489.66

BEARINGS ARE BASED ON: ASSUMED



BEARINGS WERE COMPUTED FROM RECORD DISTANCES
JANESVILLE FIELD BOOK #2 PG 7
VOL 4 PG 126

MICROFILMED

SHEET ___ OF ___

CORNER CODE: A 15 (1)

(B) Describe any record evidence, monument evidence, occupational evidence, testimonial evidence or any other material evidence you considered, and whether the monument was found or placed.

1866 LOCKE VOL 1 PG 267 SHOWS THE CORNER WEST OF THE S 1/4 CORNER OF SECTION 34 JANESVILLE TOWNSHIP AT A DISTANCE OF 9.9'. SHOWS A DISTANCE OF 2661.12 TO THE NW CORNER OF SECTION 3 AND 2751.54' TO THE CENTER OF SECTION 3.

1868 LOCKE VOL 1 PG 323. SET OAK STAKE. SHOWS A DISTANCE OF 1336.09 TO THE N 1/6th CORNER OF THE NE 1/4 OF SECTION 3. THE CORNER IS 12.05 WEST OF THE S 1/4 CORNER OF SECTION 34 JANESVILLE TOWNSHIP.

1892 BLEEDORN VOL 2 PG 464 FOUND CORNER SET LIMESTONE AND SURROUNDED IT BY 4 HARDHEADS. SHOWS THE CORNER 12.21 WEST OF THE S 1/4 CORNER OF SECTION 34 JANESVILLE TOWNSHIP. SHOWS A DISTANCE OF 2676.96(?) TO THE NE CORNER OF SECTION 3.

1932 SUNNY VOL 3 PG 209 FOUND 7X8X15 LIMESTONE ON END. SHOWS A DISTANCE OF 12.2' TO THE S 1/4 CORNER OF SECTION 34.

1962 BATTERMAN JR. FOUND 2" PIPE AND REFERENCED SAME. SHOWS A DISTANCE OF 12.71 TO S 1/4 CORNER OF SECTION 34.

1868 LEE VOL 6 PG 71 SHOWS A DISTANCE OF 2685.54 TO THE CENTER OF SECTION 3.

1981 BARNES VOL 6 PG 154 FOUND 2" IRON PIPE AND REFERENCE TIES. REPLACED PIPE WITH ALUMINUM MONUMENT WHICH IS ON TOP OF STONE OF RECORD.

1981 BARNES VOL 6 PG 186 FOUND ALUMINUM MONUMENT SHOWS THE FOLLOWING DISTANCES:

| | | | |
|-----|--------------|---------------|--------------------|
| TO: | NW COR SEC 3 | LOCKE 1866 | 2661.13 |
| | | RUGER | 2661.45 |
| | | BARNES | N89-29-33E 2663.10 |
| | NE COR SEC 3 | BLEEDORN 1892 | 2676.96 |
| | | BARNES | N88-27-03E 2675.10 |

ALSO SHOWS WPL COORDINATES AS N/S 246,278.53; E/W 2,252,489.68

AND MEASURED COORDINATES AS N/S 246,278.63; E/W 2,252,489.66

1987 BARNES JANESVILLE REMONUMENTATION PROJECT.

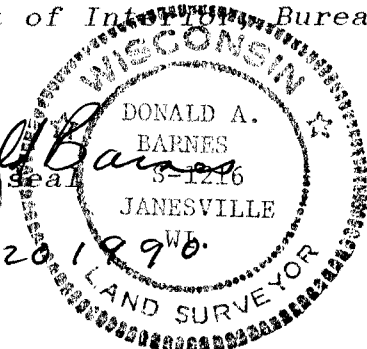
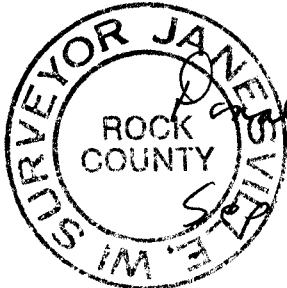
FOUND ALUM. MONUMENT.

C) Was the corner restored through acceptance of (1) an obliterated evidence location, or, (2) a found perpetuated location?

ACCEPTED FOUND MONUMENT.

(E) Was the corner reestablished through lost corner proportionate methods? If so, show the method, including the directions and distances to other public land survey corners used as evidence or used for proportioning the corner location.

I, Donald Barnes, hereby certify that the corner points as identified by the corner code index were, in a field survey on, July 18, 1990, established, re-established, monumented, re-monumented, recovered or restored as expressed below and in conformance with the regulations and rules as required in the current manual of survey instructions of the United States Department of Interior, Bureau of Land Management.



COUNTY SURVEYOR FILING DATA

Date of computer entry _____

Date microfilmed _____

Number of included sheets _____
CORNER CODE

AFFIX YOUR LAND SURVEYOR SEAL

A15 (1)