

# U.S. PUBLIC LAND SURVEY MONUMENT RECORD

For Public Land Survey Corners in the

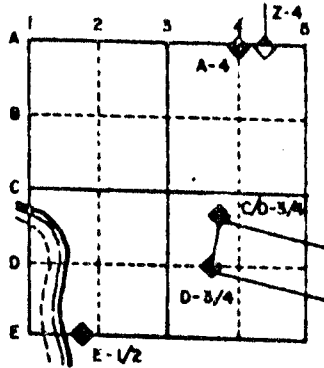
T. 2 N., R. 12 E.

## CORNER CODE INDEX

	1	2	3	4	5	6	7	8	9	10	11	12	13	14	15	16	17	18	19	20	21	22	23	24	25
A																									
B																									
C	6																								
D		5																							
E			4																						
F				3																					
G					2																				
H																									
I	7																								
J		8																							
K			9																						
L				10																					
M					11																				
N						12																			
O							13																		
P								14																	
Q									15																
R										16															
S											17														
T												18													
U													19												
V														20											
W															21										
X																22									
Y																	23								
Z																		24							
																			25						
																				26					
																					27				
																						28			
																							29		
																								30	
																									31
																									32
																									33
																									34
																									35
																									36

PLACE MONUMENT SYMBOL (●) AT PROPER LOCATION ON ABOVE INDEX

### EXAMPLE



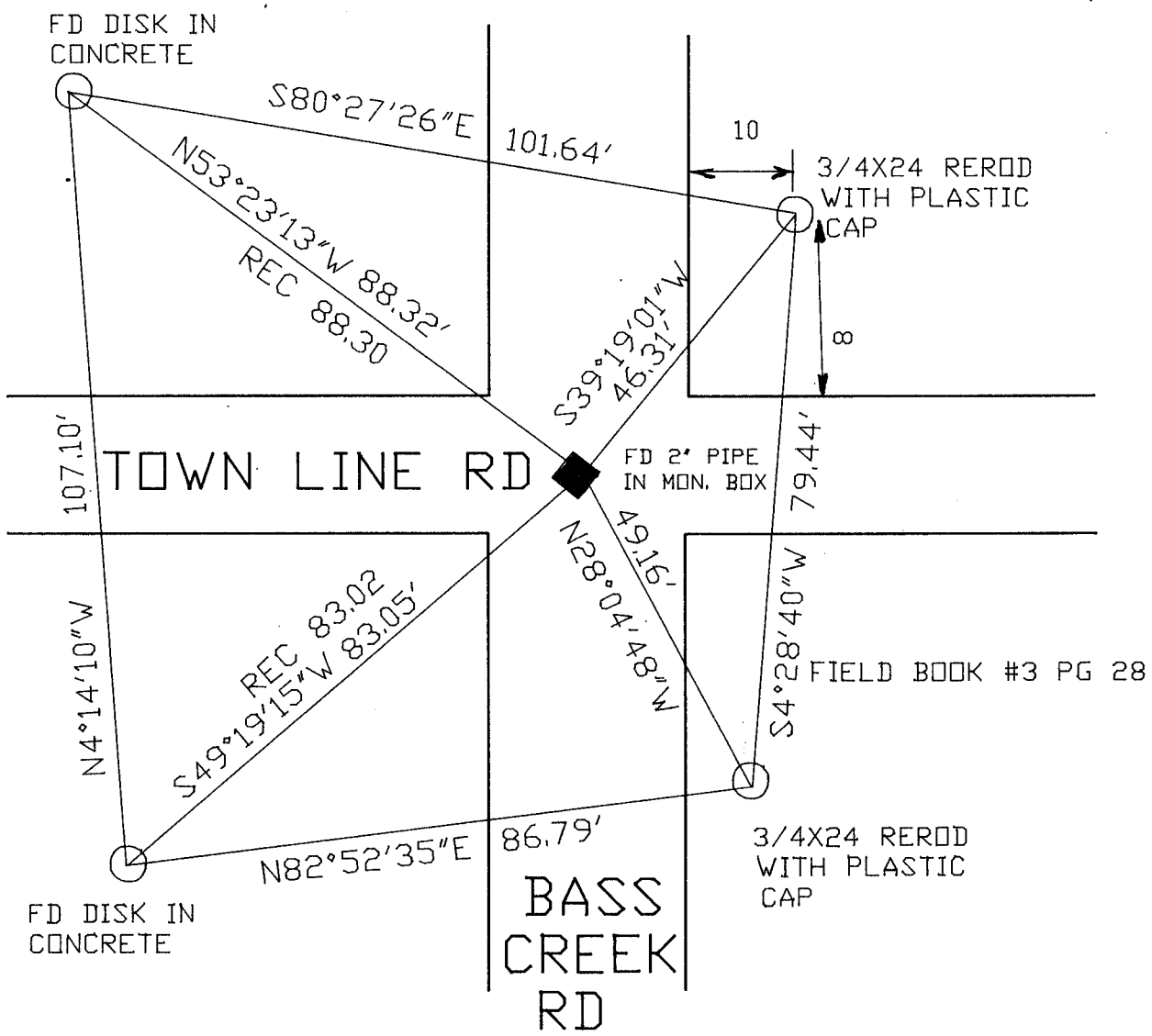
ROCK TWP  
ROCK COUNTY WI

IF AVAILABLE  
STATE PLANE COORDINATES

North (Y) \_\_\_\_\_ Eleve. (Z) \_\_\_\_\_  
 East (X) \_\_\_\_\_ Zone \_\_\_\_\_  
 Hor. Datum \_\_\_\_\_ Vert. Datum \_\_\_\_\_

● CORNER MONUMENT      ○ WITNESS MONUMENT

BEARINGS ARE BASED ON: ROCK TWP PROJ.



MICROFILMED

SHEET \_\_\_ OF \_\_\_

CORNER CODE: 217(1)

(B) Describe any record evidence, monument evidence, occupational evidence, testimonial evidence or any other material evidence you considered, and whether the monument was found or placed.

- 1833 MULLETT ORIGINAL GOVERNMENT SURVEYOR. FIELD NOTES - SET POST CORNER SECTIONS 34 & 35 IN PRAIRIE AND MADE A MOUND.
- 1834 HARRISON ORIGINAL GOVERNMENT SURVEYOR. FIELD NOTES - NORTH BETWEEN SECTIONS 2 & 3. INTERSECTED NORTH BOUNDARY AT POST. MARKED POST IN MOUND IN TOWN LINE. SECTIONS 2 & 3 T1N R12E
- 1858 CHURCH VOL 1 PG 80 STAKE MARKED IN THE CENTER OF THE HIGHWAY. SHOWS 2647.26 TO THE S 1/4 CORNER OF SECTION 34 AND 2645.28 TO THE E 1/4 CORNER OF SECTION 34.
- 1874 RUGER VOL 2 PG 143 FOUND OLD STAKE AND LIMESTONE AT CORNER. DROVE NEW STAKE IN PLACE OF OLD ONE AND PUT ON TOP OF IT LIMESTONE 22X7 1/2X6. THE CORNER IS 28.38' SOUTH OF A ROW OF SOFT MAPLE TREES AND SIDE OF ROAD RUNNING EAST AND 31.02' NORTH OF FENCE ON SOUTH SIDE OF ROAD RUNNING EAST AND 27.39' WEST OF FENCE ON EAST SIDE OF THE NORTH AND SOUTH ROAD AND 40.26' EAST OF THE ROW OF POPLAR TREES ON THE WEST SIDE OF THE NORTH AND SOUTH ROAD. SHOWS 2655.51 TO THE E 1/4 CORNER OF SECTION 34 AND 2977.26' TO THE E 1/4 CORNER OF SECTION 3.
- 1891 BLEEDORN VOL 2 PG 443. FOUND CORNER SET BY RUGER. SHOWS 2657.16' TO THE W 1/4 CORNER OF SECTION 35 AND 2656.17' TO THE S 1/4 CORNER OF SECTION 35.
- 1965 BATTERMAN VOL 4 PG 169 FOUND PIN. PLACED MONUMENT BOX AND REFERENCED SAME.
- 1979 BARNES VOL 5 PG 576. FOUND MONUMENT BOX. SHOWS 5304.64 TO THE SE CORNER OF SECTION 35.
- 1985 BARNES VOL 6 PG 332

FOUND 2" PIPE IN MONUMENT BOX.

C) Was the corner restored through acceptance of (1) an obliterated evidence location, or, (2) a found perpetuated location?

ACCEPTED FOUND MONUMENT.

D) Describe any material discrepancy between the location of the corner as restored or reestablished and the location of that corner as previously restored or reestablished by distance and direction. Show the discrepancy on the plan view drawing under (a), above. Show the distances between the corner as previously restored or reestablished and (1) the corner as restored or reestablished, and (2) to at least 4 of the witness monuments shown on the drawing in (a), above.

(E) Was the corner reestablished through lost corner proportionate methods? If so, show the method, including the directions and distances to other public land survey corners used as evidence or used for proportioning the corner location.

I, Donald Barnes, hereby certify that the corner points as identified by the corner code index were, in a field survey on, August 17, 1990, established, re-established, monumented, re-monumented, recovered or restored as expressed below and in conformance with the regulations and rules as required in the current manual of survey instructions of the United States Department of the Interior, Bureau of Land Management.



AFFIX YOUR LAND SURVEYOR SEAL

COUNTY SURVEYOR FILING DATA

Date of computer entry \_\_\_\_\_

Date microfilmed \_\_\_\_\_

Number of included sheets \_\_\_\_\_

CORNER CODE

217(1)