

M1752- Sec. 6

# U.S. PUBLIC LAND SURVEY MONUMENT RECORD GREEN COUNTY, WISCONSIN

in accordance with the Wisconsin Administrative Code, Chapter A-E 7.08 Requirements

(A) Identify the corner by reference to the U.S. Public Land Survey System.

SECTION 1 - TOWNSHIP 1 NORTH - RANGE 9 EAST

TOWN OF: SPRING GROVE

COORDINATES: WISCONSIN COUNTY COORDINATE SYSTEM - GREEN

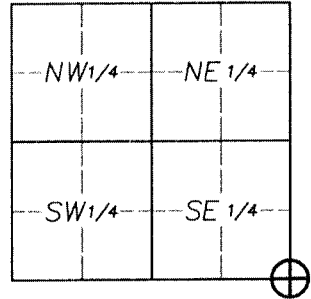
NORTHING: 127192.309

HORIZONTAL DATUM: NAD83 (2007)

EASTING: 685234.398

VERTICAL DATUM: NAVD 88

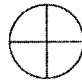




ELEVATION: 772.40'

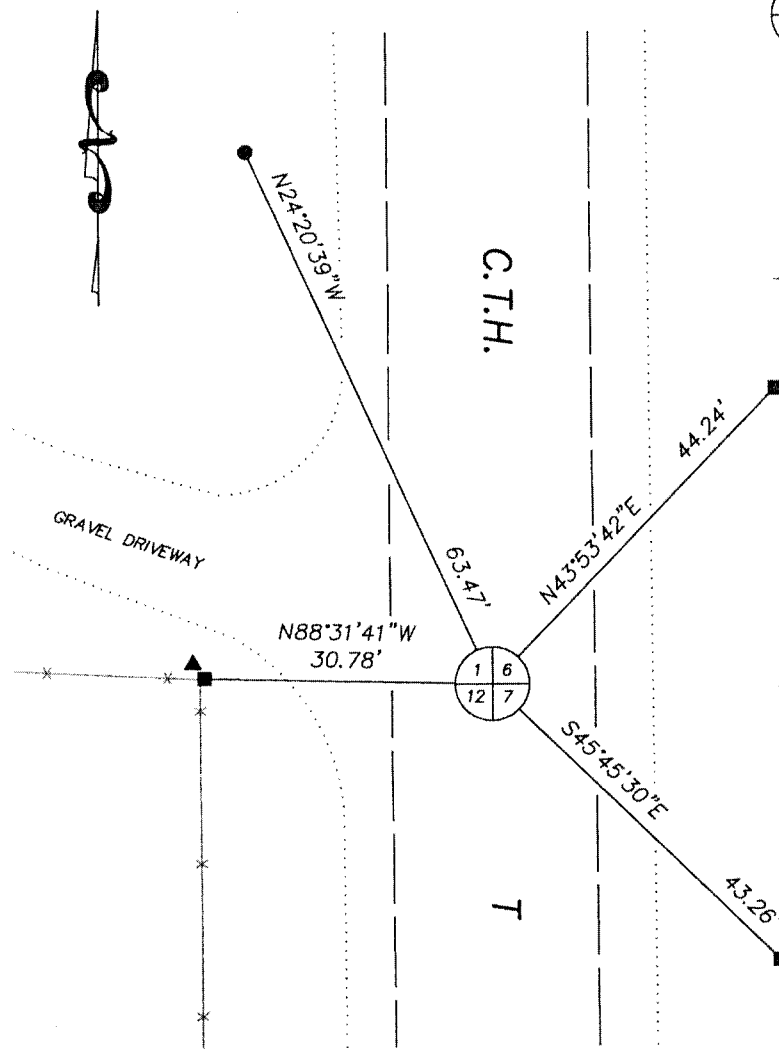


CORNER LOCATION:

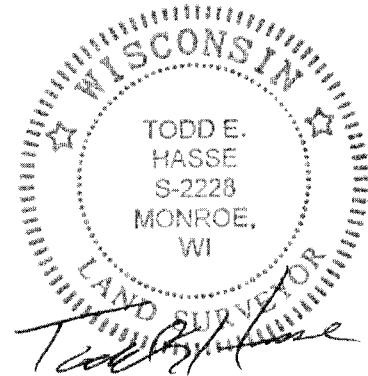
Plan View Drawing:

### LEGEND:

-  Berntsen WIALC Cast Aluminum monument set.
-  1 1/4" solid round iron rod found with carsonite fiberglass post.
-  3/4" solid round iron rod found.
-  Metal right-of-way post.
-  Existing fence line.



SCALE: 1" = 20'



### NOTE:

Bearings are referenced to the South line of the SE 1/4 of Section 1, which bears N89°26'01"E, according to the Green County Coordinate System, per GPS observation, 2007 Adjustment.

September 4th, 2014

Sec. 6 + 7

Arno Twp

# U.S. PUBLIC LAND SURVEY MONUMENT RECORD GREEN COUNTY, WISCONSIN

in accordance with the Wisconsin Administrative Code, Chapter A-E 7.08 Requirements

(B) Describe any record evidence, monument evidence, occupational evidence, testimonial evidence or any other material evidence you considered, and whether the monument was found or placed.

This corner location was previously established by Surveyor Richard Talarczyk on September 8th, 1977. On May 11th, 1992, Rock County Surveyor Donald Barnes also found and accepted this corner location as being a common corner with the SW of Section 6-1-10. The previous monument as was set by Surveyor Talarczyk has deteriorated away to the point that we only found powder remains and the magnets of the original monument. I reestablished this corner location from the (4) existing witness monuments as found and I set a Bernsten WIALC Cast Aluminum Monument 3" below the paved surface.

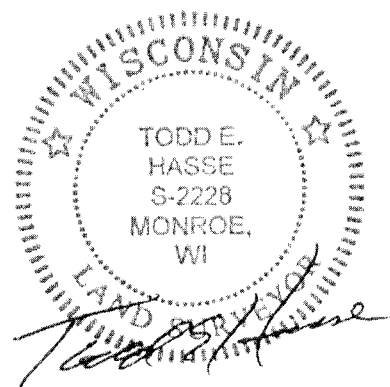
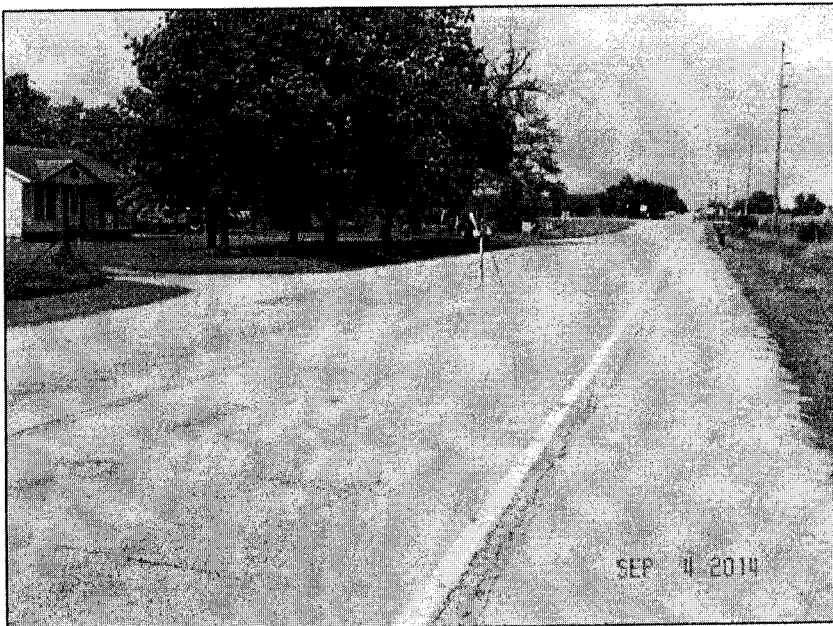
(C) Was the corner restored through acceptance of (1) an obliterated evidence location, or (2) a found perpetuated location?

An Obliterated Evidence Location

(D) Describe any material discrepancy between the location of the corner as restored or reestablished and the location of that corner as previously restored or reestablished by distance and direction. Graphically show the discrepancy on the Plan View Drawing and reference the restored or reestablished corner location to at least (4) witness monuments.

(E) Was the corner reestablished through lost corner proportionate methods? If so, show the method, including the directions and distances to other public land survey corners used as evidence or used for proportioning the corner location.

(F) Attach a photo of completed corner location if available:



September 4th, 2014

I, Todd E. Hasse hereby certify that this corner location as identified by the corner code index, was determined by me and under my direction and control and that this U.S. Public Land Survey Monument Record is correct and complete to the best of my knowledge and belief.