

Paper weight-110# (minimum)

Black nonfading ink required

U.S. PUBLIC LAND SURVEY MONUMENT RECORD

For Public Land Survey Corners In:
T. 4 N. R. 10 E. 4th P.M.
CORNER CODE INDEX

WI ADMINISTRATIVE CODE A-E 7.08 REQUIREMENT
REV 10/23/2004 USMONREC.DWG

UNION TWP
ROCK COUNTY WI

IF AVAILABLE
ROCK COUNTY COORDINATES PREFERRED

A	2	3	4	5	6	7	8	9	10	11	12	13	14	15	16	17	18	19	20	21	22	23	24	25	A
B		6				5				4				3			2			1					B
C																									C
D																									D
E																									E
F																									F
G																									G
H																									H
J																									J
K																									K
L																									L
M																									M
N																									N
O																									O
P																									P
Q																									Q
R																									R
S																									S
T																									T
U																									U
V																									V
W																									W
X																									X
Y																									Y
Z																									Z

PLACE MONUMENT SYMBOL AT PROPER LOCATION ON ABOVE INDEX

North _____ Elev. _____

East _____

Hor. Datum _____ Vert. Datum _____

LATITUDE _____ ELLIPS. HT. _____

LONGITUDE _____

NAD83(91) _____ NETWORK ADJ. YR 2010

GPS (X) _____ TRAVERSE (X)

BASED ON THE FOLLOWING CONTROL:

CORNER MONUMENT

WITNESS MONUMENT

(2)

ROCK COUNTY PROJECTION
BEARINGS ARE BASED ON: -----

FIELD BOOK _____ PAGE # _____
OR OBSERVATION SHEET _____

SHEET 1 OF 4

SHOW A PLAN VIEW DRAWING DEPICTING THE CORNER MONUMENT AND SURROUNDING PHYSICAL FEATURES, INCLUDING THE EXCAVATION AREA AND DEPTH.

PLANNING & ZONING COMMITTEE ADOPTED THIS FORM ON 12/2/1982

CORNER CODE A-1(2)

UN501 NWCORSEC6

(B) Describe any record evidence, monument evidence, occupational evidence, testimonial evidence or any other material evidence you considered, and whether the monument was found or placed.

1833 BRINK (SEP 15TH) PG 46 EAST BOUNDARY T4N R9E
NORTH ON EAST SIDE OF SECTION 12
1204.50 BUR OAK 18
2112.00 ENTER MARSH NE
2640.00 SET 1/4 SECTION POST BUR OAK 12 S1 1/2E
570.24' NO OTHER
4884 LEAVE MARSH
5280.00 SET POST FOR CORNER TO SECTIONS 1 & 12
BUR OAK 16 N6W; BUR OAK 16 S28W 116.16'
FIRST 1/2 LAND ROLLING SECOND RATE BUR
OAK, HAZEL, RED ROOT & C. MARSH WET ?
WILLOW
SEP 15TH 1833

1833 BRINK (SEP 15TH) PG 46 EAST BOUNDARY T4N R9E
NORTH ON EAST SIDE OF SECTION 1
1688.94 BUR OAK 18
2640.00 SET 1/4 SECTION POST BUR OAK 15 S54W
46'; BUR OAK 14 N33 1/2W 73.26'
5126.88 SET POST FOR CORNER TO T4&5N R9E BLACK
6 N89E 68.64'; BLACK OAK 12 S45E 235.62'
LAND ROLLING, SECOND RATE TIMBER BUR AND
BLACK OAK SEPT 15TH 1833 BY GOOD OBS AT
THIS POST VAR 6-35E

1833 BRINK (SEP 15TH) PG 50 SOUTH BOUNDARY OF T5N R9E
VAR 8-25 WEST ON SOUTH SIDE SECTION 36
2640.00 SET 1/4 SECTION POST BUR OAK 14 N36W 62.7';
BURR OAK 10 N53E 66.00'
2890.14 BUR OAK 10
5214.00 ENTER MARSH
5280.00 SET POST CORNR SECTIONS 35 & 36 BUR OAK
16 N81E 231.0'; BUR OAK 12 N74W 517.44'
LAND ROLLING SECOND RATE BUR & BLACK OAK,
RED ROOT, ROSE WILLOW & C.

1833 BRINK SOUTH BOUNDARY OF T5N R10E WEST ON SOUTH
SIDE SECTION 31
186.12 BURR OAK 14
2640.00 SET QUARTER SECTION POST BURR OAK 12
N83E 144.54'; BURR OAK 16 N43 1/2W 49.5'
2962.08 W. OAK 16
5602.08 INTERSECTED RANGE LINE 957.00' NORTH OF
CORNER SECTIONS 1 & 12 T4N R9E SET POST
AT INTERSECTION FOR CORNER TO T4 & 5N
R10E BURR OAK 12 N34E 5.28'; BURR OAK 16
S65E 81.84' LAND & C SAME.

1856 CHURCH VOL 1 PG 83 STATES NOTHING ABOUT MON. DANE
COUNTY LINE VARIATION 5-40/60. FROM NW COR OF SEC 6
TO THE FOLLOWING CORNERS: 1482.36 TO N 1/16 COR OF
NW 1/4 SEC 6, 2802.36 TO N 1/4 COR SEC 6, 957.0 TO NE
COR SEC 12 T4N R9E, 2661.12 TO W 1/4 COR SEC 6. GREEN
COUNTY LINE VARIATION 5-30

1870 RUGER AUG REMON-123 SEPTEMBER 9, 1870
COMMENCED AT NW CORNER SECTION 6 FOUND
OLD STAKE AT CORNER. ALSO FOUND STUMP OF
NORTH BEARING TREE AND REMAINS OF STUMP OF
SOUTH BEARING TREE. EAST ON NORTH LINE OF
NW 1/4 SEC 6 ON A VAR 5-40; OFFSET NORTH
44.88' INTERSECTED QUARTER LINE OF SECTION
31 T5 R10 AT QUARTER CORNER. COR VAR 6-38
CONTINUED EAST ON NORTH LINE OF NE QUARTER
OF SECTION 6 ON A VAR 7-15; OFFSET SOUTH
38.94' AT

SHEET 1 OF 4

Donald Barnes
Nov 1, 2011

CORNER CODE A-1(2)

UN501 NWCORSEC6

- 5151.96 INTERSECTED EAST BOUNDARY LINE 26.4'
SOUTH OF CORNER COR. VAR 6-59'
ESTABLISHED NORTH QUARTER CORNER SEC 6
ON TOWN LINE, AND AT A POINT 2641.32 EAST
OF NW CORNER OF SAID SECTION AND 2510.64
WEST OF NE CORNER OF SAID SECTION.
- 1870 RUGER AUG REMON-124 SOUTH ON WEST LINE OF NW
1/4 SEC 6 ON A VAR 5-05; AT
2636.04 INTERSECTED QUARTER LINE 5.28' WEST OF
QUARTER CORNER. FOUND OLD STAKE AT
CORNER. COR VAR 5-12
SOUTH ON WEST LINE OF SW 1/4 SEC 6 ON A
VAR 4-55; AT
2660.46 INTERSECTED SOUTH BOUNDARY LINE AT
CORNER.
- 1974 LEE VOL 5-51 CUT STONE FD BROKEN. ALUM SET.
REFERENCED SAME.
- 19?? UNK. #13148 308,633.37; 2,169,227.44. N88-21-59E
2953.42 TO S 1/4 COR SEC 31 T5N R10E, S0-02-10W
961.83 TO NE COR SEC 12 [307,671.54; 2,169,226.83],
N0-13-39W 1679.45 E 1/4 COR SEC 1 [310,312.81;
2,169,220.77], & 2640.2 TO W 1/4 COR SEC 31
[311,273.56; 2,169,220.77]. PORTION OF MAP FROM DANE
COUNTY BLDG.
- 1974 DOYLE #7004 & A-01 TIE SHEET DANE CO. ALUM. MON. A
6X6 LIMESTONE MON. WITH TOP PORTION BROKEN OFF
WAS FOUND BURIED ABOUT 20" BELOW TOP OF BLACKTOP
PAVEMENT AND ABOUT 3' EAST OF CENTERLINE OF CTH MM.
A 1X1 3/8 STEEL BAR WITH TOP 8" BENT TOWARD SOUTH
WAS ALSO FOUND ABOUT 16" BELOW TOP OF BLACKTOP AT
SOUTH FACE OF STONE. (THE TOP OF BAR WHEN I
ATTEMPTED TO STRAIGHTEN IT.) I SET A DANE COUNTY
ALUM MON. 18" IN LENGTH ON TOP OF BROKEN STONE. A
WATER-VALVE ACCESS CASTING WAS SET IN CONCRETE
AROUND THE MONUMENT. I ALSO SET 3/4X24 IP
REFERENCE STAKES AS SHOWN IN ABOVE SKETH (SEE
POLCOLAR PHOTOGRAPH) WITNESSED BY ERVIN HANSON,
ALTON ERICKSON AND DANIAL JOHNSON ALL OF
BROOKLYN.
- 1974 DOYLE #7004 TIE SHEET S89-50-21E 2953.4 TO S 1/4 COR
SEC 31.
- 1977 TALARCZYCK TIE SHEET #7003 NE COR SEC 12 T4N R9E
CAST ALUM. MON. 10.5' WEST OF EAST PVMT EDGE.
CORNER SET BY PROPORTIONATE MEASUREMENT &
EXISTING PHYSICAL EVIDENCE.
- 1977 TALARCZYCK TIE SHEET #7003 NE COR SEC 1 T4N R9E
CAST ALUM. MON. ON LINE WITH E/W POWER POLES ON
WEST SIDE OF RD. CORNER SET BY PROPORTIONATE
MEASUREMENT & EXISTING PHYSICAL EVIDENCE.
E 1/4 COR SEC 1 T4N R9E CAST ALUM. MON. 11 EAST OF
WEST PVMT EDGE & 11.5 WEST OF EAST PVMT EDGE.
BY PROPORTIONATE MEASUREMENT & EXISTING PHYSICAL
EVIDENCE.
- 1977 BARNES VOL 5-369 STATES NOTHING ABOUT MON. EDM
2640.94 TO W 1/4 COR SEC 6 & 961.80 TO NE COR SEC 12
T4N R9E, WHICH IS SOUTH OF THE NW COR SEC 6
- 1996 BOWEDEN A-01(1) BOWEDEN DATA. BARNES COMPUTED
COUNTY COORDINATES OF 332,535.94; 400,404.357
884.502 NAD 29 FD STA 7+26 FD PK NE COR SEC 1 T4
R9E

SHEET 2 OF 4

Donald
Barnes
Nov 1, 2011

CORNER CODE A-1(2)

UN501 NWCORSEC6

1996 BOWEDEN A-01(1) BOWEDEN DATA. BARNES COMPUTED
COUNTY COORDINATES OF 327,406.962; 400,357.395
ELEV 956.76 NAD 83 NVAD 29. FD PK SE COR SEC 1 T4N
R9E

FD SURVEY SPIKE & REFERENCE PIPES ON EAST SIDE OF RD.

C) Was the corner restored through acceptance of (1) an obliterated evidence location, or, (2) a found perpetuated location?

ACCEPTED FD SPIKE, WHICH PERPETUATES FD CUT LIMESTONE.

D) Describe any material discrepancy between the location of the corner as restored or reestablished and the location of that corner as previously restored or reestablished by distance and direction. Show the discrepancy on the plan view drawing under (a), above. Show the distances between the corner as previously restored or reestablished and (1) the corner as restored or reestablished, and (2) to at least 4 of the witness monuments shown on the drawing in (a), above.

NONE

(E) Was the corner reestablished through lost corner proportionate methods? If so, show the method, including the directions and distances to other public land survey corners used as evidence or used for proportioning the corner location.

NO

I, **Donald Barnes**, hereby certify that the corner location as identified by the corner code index was determined by me under my direction and control and that this U.S. Public Land Survey Monument Record is correct and complete to the best of my knowledge and belief.

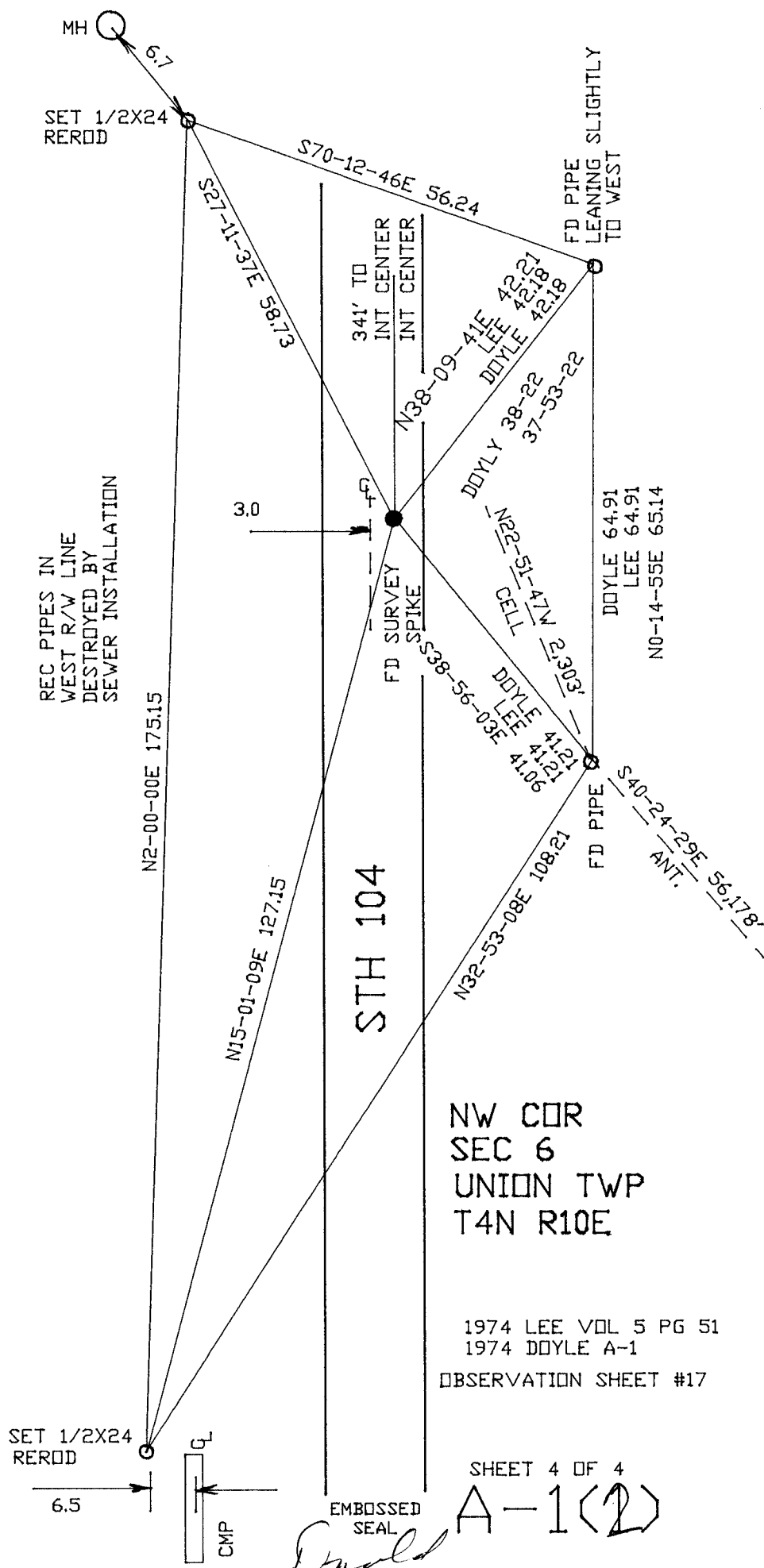


Emboss

SHEET 3 OF 4

CORNER CODE **A-1(2)**

A.E. 7.08 REQUIREMENT



Enald Barnes
Nov 1, 2011