

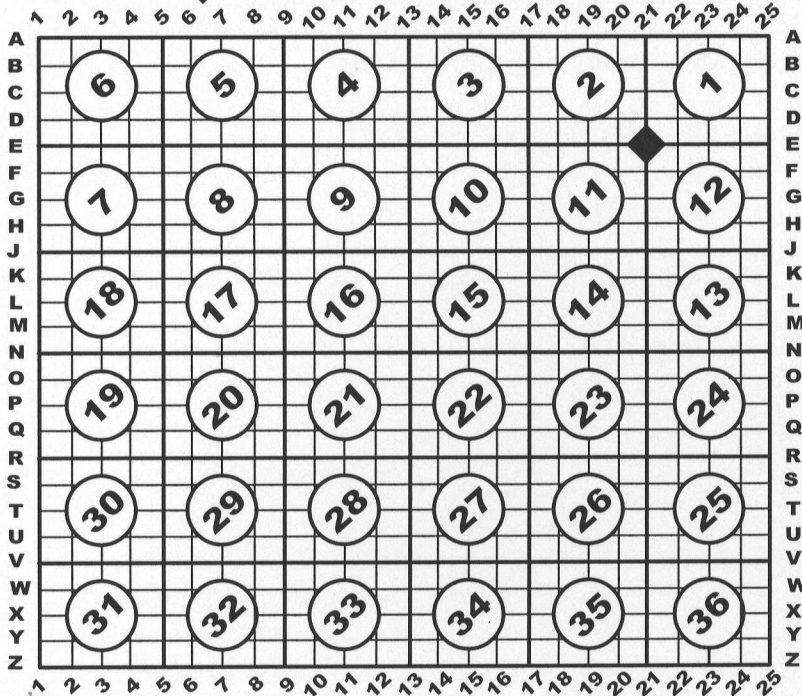
# U.S. PUBLIC LAND SURVEY MONUMENT RECORD

For Public Land Survey Corners In:  
T. 2 N. - R. 12 E. of the 4th P.M.

WI. ADMINISTRATIVE CODE  
A-E 7.08 REQUIREMENT

### CORNER CODE INDEX

(PLACE SYMBOL AT THE PLSS CORNER)



ROCK Twp.  
Rock County, WI.



**COORDINATES**  
**GNSS DERIVED VIA WISCORS**  
**WISCORS, ROCK DATUM, (NA2011)**

NORTHING: 259707.75      ELEV: n/a  
EASTING: 491037.32

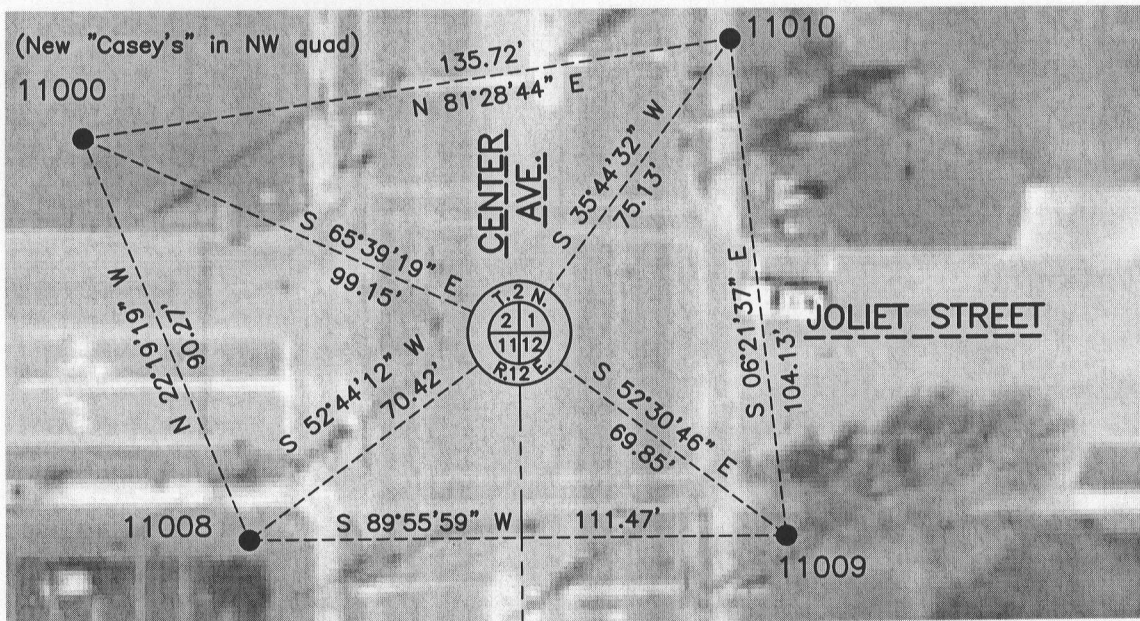
Vertical Datum: NAVD 88, (If applicable)

**(a) - Legend**

- - 3/4" x 24" REBAR SET, (RED CAP W/"PLSS WITNESS")
- ⊙ - IRON REBAR FOUND
- (#) - PREVIOUS TIE-SHEET DIMENSION



- No monument found or set, (see page 2)



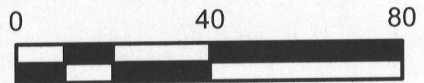
POINT TABLE

| Point | Northing  | Easting   |
|-------|-----------|-----------|
| 11000 | 259748.62 | 490946.99 |
| 11008 | 259665.11 | 490981.28 |
| 11009 | 259665.24 | 491092.74 |
| 11010 | 259768.73 | 491081.21 |

N 00°28'33" W  
2651.61'  
(2651.61')  
(2651.83')  
(2651.55')



COMPUTED LOCATION  
\*SEE JRH 2014 TIE-SHEET\*



**B) Describe any record evidence, monument evidence, occupational evidence, testimonial evidence or any other material evidence you considered, and whether the monument was found or placed.**

This location has no surface monument and the last tie-sheet prepared, (Barnes-1991), pre-dates road construction at the intersection. I relied exclusively a survey prepared by Combs & Associates, (CSM V. 29, Pg.'s 179-181), in the northwest quadrant of the intersection to recreate the PLSS corner location. The distance to the NE corner of 11-2-12 is in harmony with the CSM & past a Barnes section line distance. Past section line distances are noted on the map. I did not dig for an aluminum monument at the PLSS corner.

I did not set a PLSS corner and show four ties to the location due to heavy traffic volume.

WISCRS, Rock Datum, (NA2011), coordinates are provided for the corner & witnesses.

**C) Was the corner restored through acceptance of (1) an obliterated evidence location, or, (2) a found perpetuated location?**

Found perpetuated location.

**D) Describe any material discrepancy between the location of the corner as restored or reestablished and the location of that corner as previously restored or reestablished by distance and direction. Show the discrepancy on the plan view drawing under (a), above. Show the distances between the corner as previously restored or reestablished and (1) the corner as restored or reestablished, and (2) to at least 4 of the witness monuments shown on the drawing in (a), above.**

I did not find a discrepancy between the corner restored and a previously documented corner location. *Discrepancy* being defined as *disagreeing* with a corner location, *not* as noting dimensional differences between current/former tie sheets due to measuring methods. The current and *most recent* tie-sheet dimensions filed for the corner are noted.

**(E) Was the corner reestablished through lost corner proportionate methods? If so, show the method, including the directions and distances to other public land survey corners used as evidence or used for proportioning the corner location.**

N/A

*I, Jason R. Houle, hereby certify that the corner location as identified by the corner code index was determined by me under my direction and control and that this U.S. Public Land Survey Monument Record is correct and complete to the best of my knowledge and belief.*

**CORNER CODE: E-21**  
(A.E. 7.08 REQUIREMENT)

