

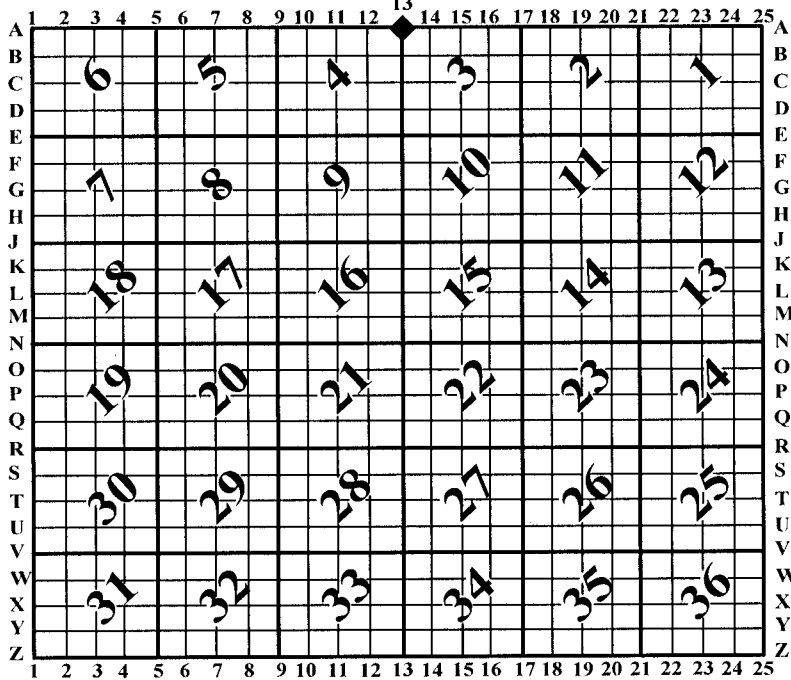
U.S. PUBLIC LAND SURVEY MONUMENT RECORD

For Public Land Survey Corners In: WI ADMINISTRATIVE CODE A-E 7.08 REQUIREMENT

T. 2 N. - R. 12 E. of the 4th P.M.

CORNER CODE INDEX

(PLACE "◆" SYMBOL AT PROPER PLSS CORNER LOCATION)



ROCK TWP
ROCK COUNTY WI

COORDINATES

(GNSS DERIVED VIA WISCORS)

NORTHING: 265099.54 ELEV:

EASTING: 480273.66

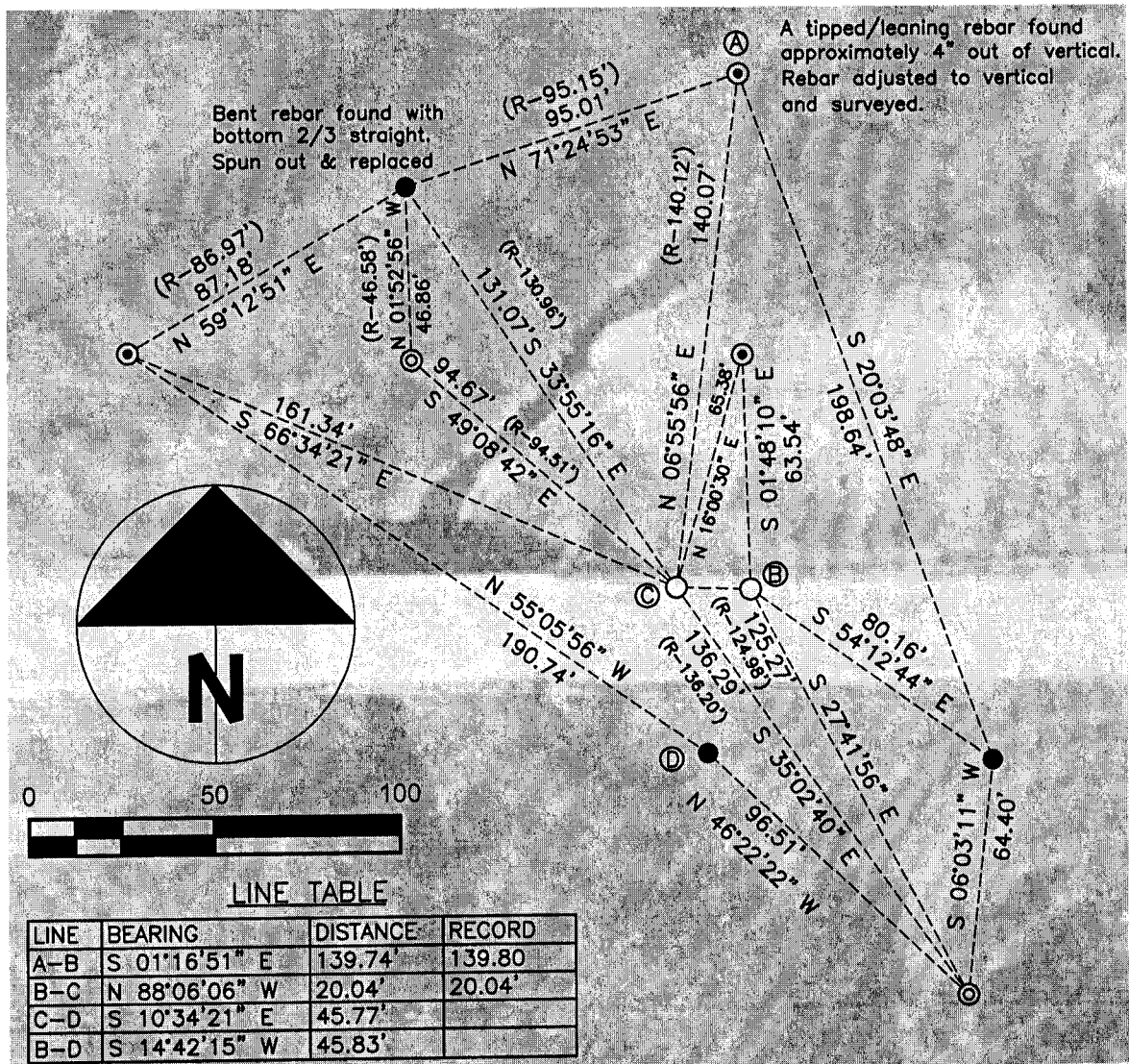
Hor. Datum: WCCS-ROCK, NAD83 (NA2011)

Vertical Datum: NAVD 88

(a) LEGEND

- - 5/8" x 24" REBAR SET, (RED CAP W/"PLSS WITNESS")
- - COTTON GIN SPINDLE SET
- ⊙ - IRON REBAR FOUND
- ⊕ - WDOT ALUMINUM MONUMENT FOUND
- "R" - RECORD DISTANCE ON PREVIOUS TIE-SHEET

- ⓐ - SE CORNER, 33-3-12, 627J
- ⓒ - NE CORNER, 4-2-12, 507R



B) Describe any record evidence, monument evidence, occupational evidence, testimonial evidence or any other material evidence you considered, and whether the monument was found or placed.

This area has been recently paved over and it believed, based on a metal detector, that a former monument, (aluminum), still exists below the surface, (further explained in question D). This location has been well documented on former tie-sheets with original stones & a hardhead located in 1981, (Barnes). Rather than dig holes in the asphalt, which creates an on-going maintenance issue, old ties were recovered that check well, (1987 Barnes), and the corner position was determined from them. A cotton gin spindle was set, as shown on the sketch.

Question D describes discrepancies with the aluminum monument below the surface.

C) Was the corner restored through acceptance of (1) an obliterated evidence location, or, (2) a found perpetuated location?

The corner was restored through acceptance of monuments found on the 1987 Barnes tie-sheet. The same tie-sheet was prepared in advance of road construction in the area.

D) Describe any material discrepancy between the location of the corner as restored or reestablished and the location of that corner as previously restored or reestablished by distance and direction. Show the discrepancy on the plan view drawing under (a), above. Show the distances between the corner as previously restored or reestablished and (1) the corner as restored or reestablished, and (2) to at least 4 of the witness monuments shown on the drawing in (a), above.

An aluminum monument was set by Barnes in 1981 based on original government survey evidence, (stones and hardheads). However, fieldwork performed for the preparation of this tie-sheet revealed discrepancies between the same monument tied off by Barnes in 1987 and re-set by the same, (post road/bridge construction), in 1988. Both the '87 & '88 ties are shown on the tie-sheets for the SE corner of Section 33, Janesville Township. A 1990 Rock Township tie sheet for the NE of Sec. 4 repeats the same information produced in '88 for Janesville Township, (Barnes), and it does not appear any fieldwork was done in 1990 as the map page references the 1988 fieldwork. As can best be determined through examination of old field notes, there was an error made when resetting the aluminum monument 1988. This conclusion is reached based on the geometry of the fieldwork performed when resetting the monument at the time, the current location of the monument based on the metal detector/past surveys and distances to the monument in comparison to those shown on the 1987 tie sheet. To summarize, the existing aluminum monument is roughly 0.9 feet Southwest of its calculated position based on the '87 tie-sheet. I do not accept the position of the monument below the surface and set a cotton gin spindle based on the '87 tie-sheet. All monuments found as part of my work are shown on the sketch with the corresponding historical measurement data.

My measuring methodology is as follows:

- Baseline control was set with the Carlson GNSS rover utilizing WISCORS, (two duranails).
- The nails were occupied with a robotic total station and backsight.
- All monuments were tied and/or set via prism pole and data collector.
- Raw field data is contained within the file folder stored digitally at the County Surveyors office.

(E) Was the corner reestablished through lost corner proportionate methods? If so, show the method, including the directions and distances to other public land survey corners used as evidence or used for proportioning the corner location.

N/A

I, **Jason R. Houle**, hereby certify that the corner location as identified by the corner code was determined by me under my direction and control and that this U.S. Public Land Survey Monument is correct and complete to the best of my knowledge and belief.

CORNER CODE: A-13(2)
(A.E. 7.08 REQUIREMENT)

