

U.S. PUBLIC LAND SURVEY MONUMENT RECORD

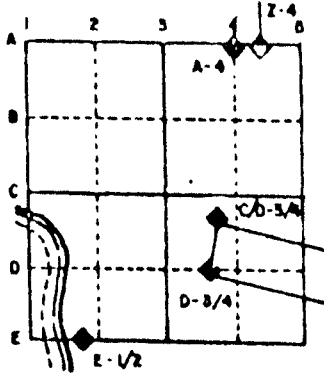
For Public Land Survey Corners in the
T. 2 N., R. 12 E.

CORNER CODE INDEX

	1	2	3	4	5	6	7	8	9	10	11	12	13	14	15	16	17	18	19	20	21	22	23	24	25
A																									
B																									
C	6																								
D																									
E																									
F																									
G																									
H	7																								
I																									
J																									
K																									
L	8																								
M																									
N																									
O																									
P																									
Q	9																								
R																									
S																									
T	50																								
U																									
V																									
W																									
X																									
Y	31																								
Z																									

PLACE MONUMENT SYMBOL (◆) AT PROPER LOCATION ON ABOVE INDEX

EXAMPLE



ROCK TWP
ROCK COUNTY WI

IF AVAILABLE
STATE PLANE COORDINATES

North (Y) _____ Eleve. (Z) _____
 East (X) _____ Zone _____
 Hor. Datum _____ Vert. Datum _____

◆ CORNER MONUMENT

○ WITNESS MONUMENT

BEARINGS ARE BASED ON:

MICROFILMED

SHEET 1 OF 2

CORNER CODE: A 19(2)

(B) Describe any record evidence, monument evidence, occupational evidence, testimonial evidence or any other material evidence you considered, and whether the monument was found or placed.

- 1834 HARRISON ORIGINAL GOVERNMENT SURVEYOR. FIELD NOTES - INTERSECTED NORTH BOUNDARY AT POST. BEARING TREES; HICKORY 10 S42E 110, RED OAK 12 S38W 65. MEASURED 2354.22 TO MEANDER POST THAT IS TO THE SOUTH.
- 1859 UNKNOWN VOL 1 PG 102 TOOK NEW WITNESS TREES; HICKORY 10 N39-25W 63 & HICKORY 7 S3-55W 36 1/4. SHOWS A DISTANCE OF 1328.91' TO THE N 1/16th CORNER OF THE NE 1/4 OF SECTION 3.
- 1868 LOCKE VOL 1 PG 312 FOUND CORNER AS SET BY SELF. SHOWS A DISTANCE OF 2661.12 TO N 1/4 CORNER OF SECTION 2.
- 1868 LOCKE VOL 1 PG 323 SHOWS THE SECTIONS BUT STATES NOTHING ABOUT THE CORNER.
- 1892 BLEEDORN VOL 2 PG 464 FOUND LIMESTONE AT CORNER. SHOWS A DISTANCE OF 1338.48 TO THE N 1/6th CORNER OF THE NE 1/4 OF SECTION 3.
- 1981 BARNES VOL 6 PG 186. FOUND X IN MANHOLE COVER. SHOWS THE FOLLOWING DISTANCES:
- | | | |
|--------------------|---------------|---------|
| TO N 1/4 COR SEC 3 | LOCKE 1868 | 2672.18 |
| | BLEEDORN 1892 | 2676.96 |
| | N88-27-03-E | 2675.10 |
| E 1/4 COR SEC 34 | LOCKE 1866 | 2645.28 |
| | RUGER 1873 | 2646.6 |
| | BARNES 1981 | 2650.55 |
- COORDINATES N/S 246,350.97; E/W 2,255,163.75
- 1981 BARNES VOL 6 PG 195 FOUND PUNCHED HOLE IN CUT "X" ON TOP OF MAN HOLE COVER. ALIGNMENT MARKS CUT IN RIM AND OUTER EDGE OF MANHOLE. REFERENCED SAME.
- 1987 BARNES JANESVILLE TOWNSHIP PROJECT. FOUND POLY MONUMENT.
- FOUND PK AND UNDER ASPHALT FOUND POLY MONUMENT.

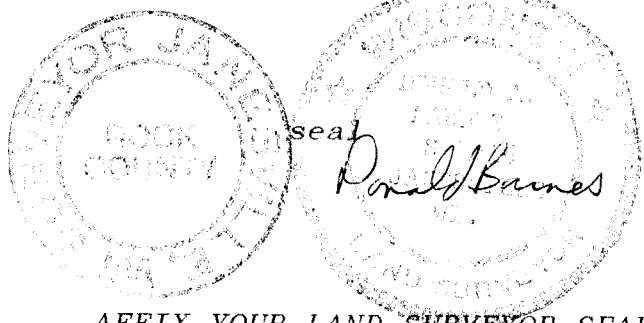
C) Was the corner restored through acceptance of (1) an obliterated evidence location, or, (2) a found perpetuated location?

ACCEPTED FOUND MONUMENT.

D) Describe any material discrepancy between the location of the corner as restored or reestablished and the location of that corner as previously restored or reestablished by distance and direction. Show the discrepancy on the plan view drawing under (a), above. Show the distances between the corner as previously restored or reestablished and (1) the corner as restored or reestablished, and (2) to at least 4 of the witness monuments shown on the drawing in (a), above.

(E) Was the corner reestablished through lost corner proportionate methods? If so, show the method, including the directions and distances to other public land survey corners used as evidence or used for proportioning the corner location.

I, Donald Barnes, hereby certify that the corner points as identified by the corner code index were, in a field survey on, November 20, 1990, established, re-established, monumented, re-monumented, recovered or restored as expressed below and in conformance with the regulations and rules as required in the current manual of survey instructions of the United States Department of Interior, Bureau of Land Management.



COUNTY SURVEYOR FILING DATA

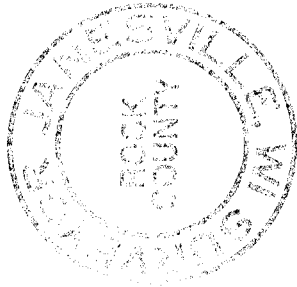
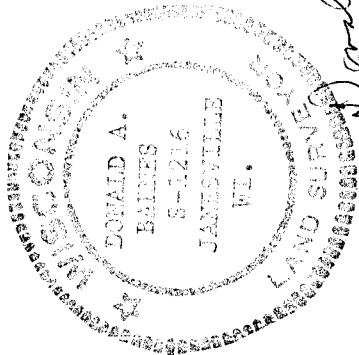
Date of computer entry _____

Date microfilmed _____

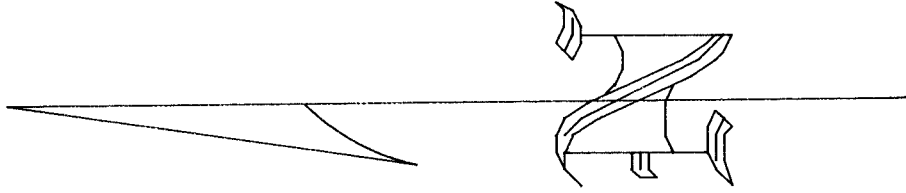
Number of included sheets _____

CORNER CODE

AFFIX YOUR LAND SURVEYOR SEAL

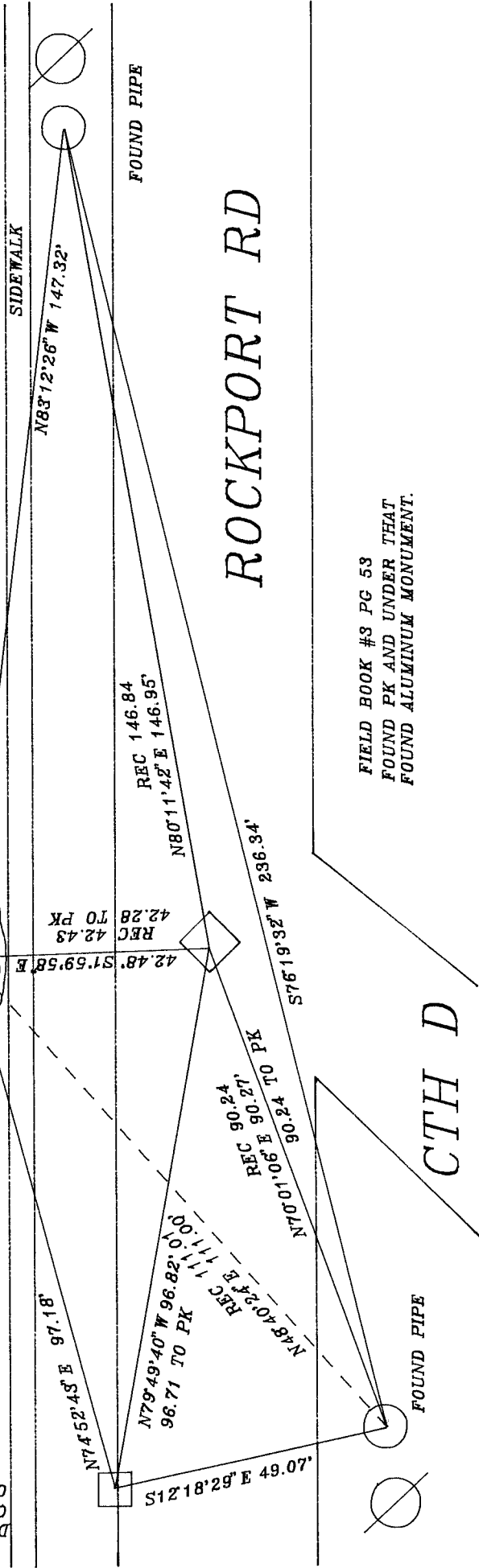


Donald Baines



DRILL HOLE IN
CENTER OF TOP
OF CATCH BASIN

FOUND REROD



SIDEWALK

N83°12'26" W 147.32'

FOUND PIPE

ROCKPORT RD

FIELD BOOK #8 PG 53
FOUND PK AND UNDER THAT
FOUND ALUMINUM MONUMENT.

CTH D

FOUND PIPE