

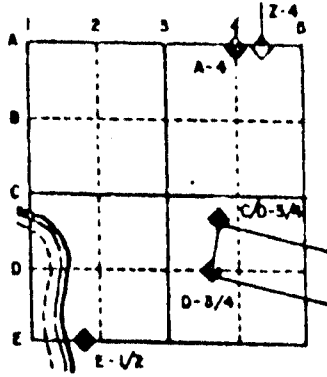
U.S. PUBLIC LAND SURVEY MONUMENT RECORD

For Public Land Survey Corners in the
 T. 2 N., R. 12 E.
 CORNER CODE INDEX

1	2	3	4	5	6	7	8	9	10	11	12	13	14	15	16	17	18	19	20	21	22	23	24	25
A																								
B																								
C	6	5	4	3	2																			
D	◆																							
E																								
F																								
G	7	8	9	10	11	12																		
H																								
I																								
J																								
K	16	17	18	19	14	13																		
L																								
M																								
N																								
O																								
P	19	20	21	22	23	24																		
Q																								
R																								
S																								
T	30	29	28	27	26	25																		
U																								
V																								
W																								
X																								
Y	31	32	33	34	35	36																		
Z																								

PLACE MONUMENT SYMBOL (◆) AT PROPER LOCATION ON ABOVE INDEX

EXAMPLE



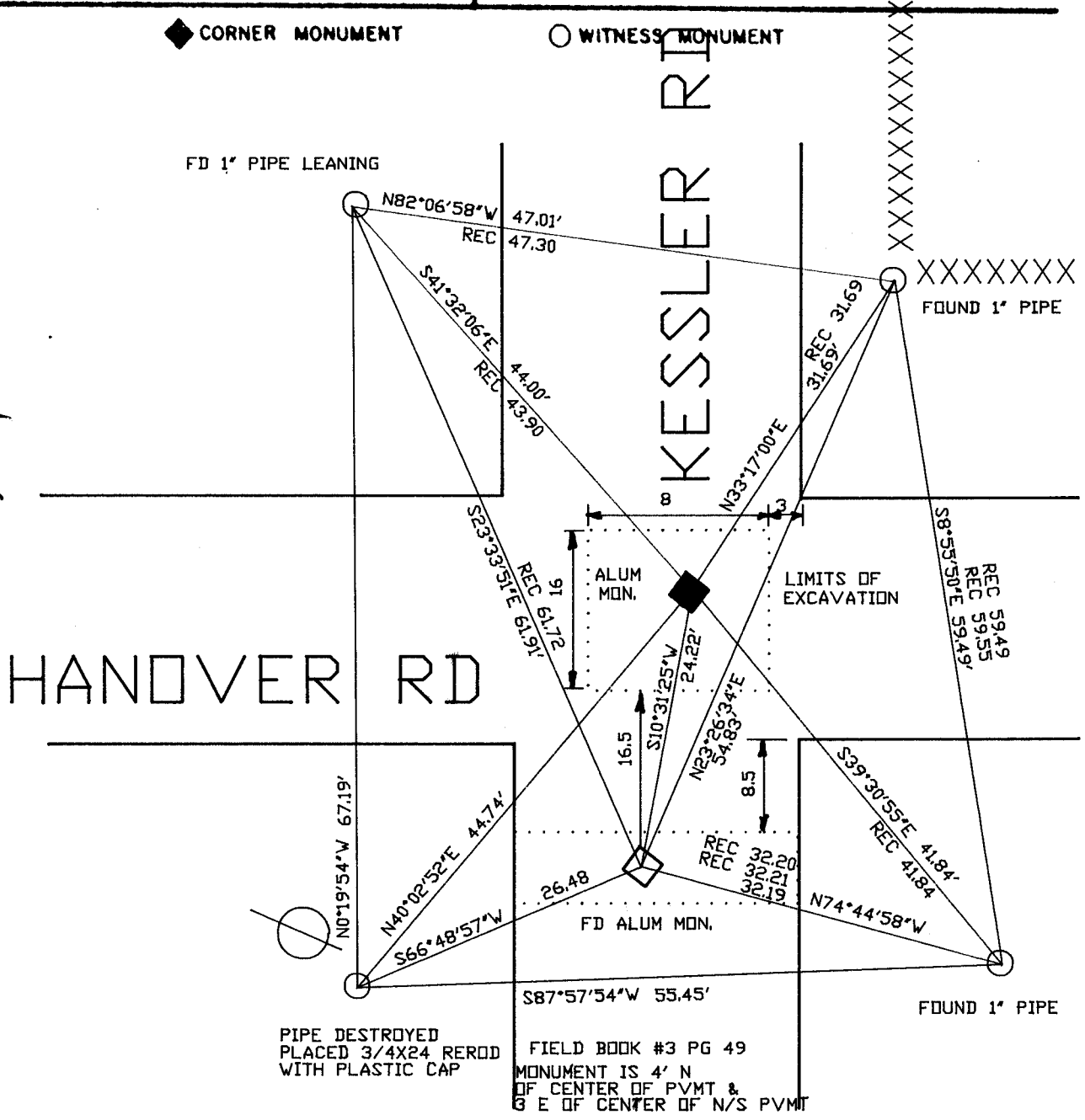
Rock TWP
 ROCK COUNTY WI

IF AVAILABLE
 STATE PLANE COORDINATES

North (Y) _____ Elev. (Z) _____
 East (X) _____ Zone _____
 Hor. Datum _____ Vert. Datum _____

◆ CORNER MONUMENT ○ WITNESS MONUMENT

BEARINGS ARE BASED ON: Rock Township Project



PIPE DESTROYED
 PLACED 3/4X24 REROD
 WITH PLASTIC CAP

FIELD BOOK #3 PG 49
 MONUMENT IS 4' N
 OF CENTER OF PVMT &
 6' E OF CENTER OF N/S PVMT

SHEET _____ OF _____

CORNER CODE: E3(1)

(B) Describe any record evidence, monument evidence, occupational evidence, testimonial evidence or any other material evidence you considered, and whether the monument was found or placed.

- 1854 Mc VEAN VOL 1 PG 23 STATES NOTHING ABOUT MONUMENT. SHOWS IN SECTION 6 DISTANCES OF 2670.36 TO SW, 2644.62 TO SE, AND 2616.57 TO CENTER.
- 1866 LOCKE VOL 1 PG 265 FOUND REMAINS OF STAKE. SET LOCUST STAKE WITH HARDHEAD ON N&S AND LIMESTONE ON EAST FLINT HARD HEAD ON WEST. SHOWS A DISTANCE OF 2647.76' TO THE CENTER OF SECTION 6
- 1868 LOCKE VOL 1 PG 314 FOUND CORNER AS SET BY SELF. SHOWS A DISTANCE OF 2656.50' TO THE SE CORNER OF SECTION 6.
- 1933 SUNNY VOL 3 PG 234. FOUND LIMESTONE SURROUNDED BY LIMESTONES-RUGER 1870. ALSO SHOWS A 1868 LOCKE DISTANCE OF 2656.50 TO THE SW CORNER OF SECTION 6.
- 1974 LEE VOL 5 PG 53 CORNER SET AT INTERSECTION N/S AND CENTER OF SOUTH LINE OF SECTION 6. DOES NOT STATE THE TYPE OF MONUMENT THAT WAS PLACED. REFERENCED SAME. SHOWS A DISTANCE OF 2666.27 TO SW CORNER AND 2660.37 TO SE CORNER OF SECTION 6
- 1980 BARNES VOL 6 PG 29 SHOWS RECORD DISTANCES.

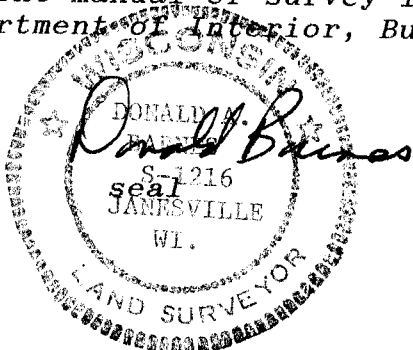
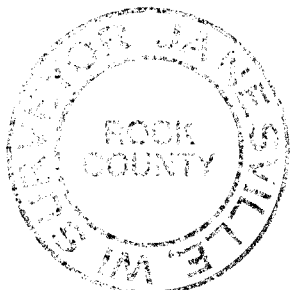
FOUND PK THAT WAS IN HARMONY WITH RECORD DISTANCES TO REFERENCE PIPES. REPLACED PK WITH POLY. MONUMENT. EXCAVATED FOR CORNER AS SHOWN ON MAP. DUG 4' DEEP AND FOUND OLD PIECES OF ASPHALT WHERE FORMER COUNTY SURVEYOR DUG.

C) Was the corner restored through acceptance of (1) an obliterated evidence location, or, (2) a found perpetuated location?

RESTORED CORNER BY ACCEPTING OBLITERATED EVIDENCE LOCATION. THE E/W LOCATION WAS DETERMINED BY PRORATING McVEAN'S DISTANCES ALONG THE SW AND SE 1/4 LINES. THE N/W LOCATION WAS DETERMINED BY PRORATING McVEAN'S DISTANCE FROM THE N 1/4 CORNER OF SECTION 6. THIS IS IN HARMONY WITH LOCKE'S DISTANCE TO THE N 1/4 CORNER OF SECTION 6 AND SUNNY'S DISTANCE TO THE N 1/4 CORNER AND SE CORNER OF SECTION 6. THIS IS ALSO IN HARMONY WITH LOCKE'S DISTANCE ALONG THE SOUTH LINE OF THE NE 1/4 OF SECTION 7. PLACED ALUMINUM MONUMENT.

D) Describe any material discrepancy between the location of the corner as restored or reestablished and the location of that corner as previously restored or reestablished by distance and direction. Show the discrepancy on the plan view drawing under (a), above. Show the distances between the corner as previously restored or reestablished and (1) the corner as restored or reestablished, and (2) to at least 4 of the witness monuments shown on the drawing in (a), above.
I REJECTED LEE'S MONUMENT, BECAUSE IT WAS BASED ON THE CORNER THAT HE ESTABLISHED AT THE SW CORNER OF SECTION 6 AND NOT THE CUT LIMESTONE THAT I FOUND AT THE SW CORNER.

I, Donald Barnes, hereby certify that the corner points as identified by the corner code index were, in a field survey on, AUGUST 20, 1991, established, re-established, monumented, re-monumented, recovered or restored as expressed below and in conformance with the regulations and rules as required in the current manual of survey instructions of the United States Department of Interior, Bureau of Land Management.



COUNTY SURVEYOR FILING DATA

Date of computer entry _____

Date microfilmed _____

Number of included sheets _____

CORNER CODE

AFFIX YOUR LAND SURVEYOR SEAL

EB(1)