

Paper weight-110# (minimum)

Black nonfading ink required

# U.S. PUBLIC LAND SURVEY MONUMENT RECORD

For Public Land Survey Corners In:

WI ADMINISTRATIVE CODE A-E 7.08 REQUIREMENT

T. 2N. R. 12E. 4th P.M.

REV 10/23/2004

USMONREC.DWG

### CORNER CODE INDEX

ROCK TWP  
ROCK COUNTY WI

IF AVAILABLE  
ROCK COUNTY COORDINATES PREFERRED

A	1	2	3	4	5	6	7	8	9	10	11	12	13	14	15	16	17	18	19	20	21	22	23	24	25	A
B		6					5								4											B
C																										C
D																										D
E																										E
F																										F
G																										G
H																										H
J																										J
K																										K
L																										L
M																										M
N																										N
O																										O
P																										P
Q																										Q
R																										R
S																										S
T																										T
U																										U
V																										V
W																										W
X																										X
Y																										Y
Z																										Z

North \_\_\_\_\_ Elev. \_\_\_\_\_

East \_\_\_\_\_

Hor. Datum \_\_\_\_\_ Vert. Datum \_\_\_\_\_

LATITUDE \_\_\_\_\_ ELLIPS. HT. \_\_\_\_\_

LONGITUDE \_\_\_\_\_

NAD83(91) \_\_\_\_\_ NETWORK ADJ. YR \_\_\_\_\_

GPS (X) \_\_\_\_\_ TRAVERSE (X) \_\_\_\_\_

BASED ON THE FOLLOWING CONTROL:

PLACE MONUMENT SYMBOL  AT PROPER LOCATION ON ABOVE INDEX

CORNER MONUMENT

WITNESS MONUMENT

BEARINGS ARE BASED ON: (a) \_\_\_\_\_

FIELD BOOK \_\_\_\_\_ PAGE # \_\_\_\_\_

SHEET 1 OF 2

SHOW A PLAN VIEW DRAWING DEPICTING THE CORNER MONUMENT AND SURROUNDING PHYSICAL FEATURES, INCLUDING THE EXCAVATION AREA AND DEPTH.

PLANNING & ZONING COMMITTEE ADOPTED THIS FORM ON 12/2/1982

CORNER CODE A-15(3)

RO508 N 1/4 COR SEC 3

(B) Describe any record evidence, monument evidence, occupational evidence, testimonial evidence or any other material evidence you considered, and whether the monument was found or placed.

- 1833 BRINK 2640 FROM SW TO S 1/4 COR SEC 34 & 2640 FROM S 1/4 COR SEC 34 TO SE COR SEC 34.
- 183? ORIG GOV. SURVEY. ESTABLISHED NO MON AT N 1/4 COR SEC 3. @ NW COR SEC 3 THE ORIG SURVEY CLOSED 33' WEST OF THE SW COR OF SEC 34 JANESVILLE TWP & @ THE NE COR SEC 3 THE ORIG SURVEYOR CLOSED AT THE SE COR OF SEC 34 JANESVILLE TWP
- 1865 LOCKE MAP #3675 STATES NOTHING ABOUT MON. CALLS FOR 2751.54 TO CENTER OF SEC 3 & 5391.54 TO S 1/4 COR SEC 3.
- 1866 LOCKE VOL 1 PG 267 & MAP #3764 @ S 1/4 COR SEC 34 FOUND 3 BT & STUMP OF BT. CALLS FOR NW COR SEC 3 WEST 19.8 OF SW COR SEC 34 WHERE HE FD BTS & FENCE POST ON COR.  
SHOWS THE CORNER 9.9' WEST OF THE S 1/4 CORNER OF SECTION 34 JANESVILLE TOWNSHIP AT A DISTANCE OF 9.9'. SHOWS A DISTANCE OF 2661.12 TO THE NW CORNER OF SECTION 3 AND 2751.54' TO THE CENTER OF SECTION 3, 5407.38 TO S 1/4 COR SEC 3.
- 1866 LOCKE VOL1 PG 271 & MAP #5874 AT S 1/4 COR SEC 34 FD E BT & STUMP OF W. BT. SET STAKE WITH STONE ON N & S & E & W. VAR7-40 2660.13 TO SE COR SEC 34. 2663.02 TO SET LIMESTONE 22X9X4 WITH FLAT LIMESTONE ON N AND S AND E AND W. @ CENTER OF SEC 34, & 5326.04 TO N 1/4 COR SEC 34. 2657.82 VAR 6-50 FROM GEN SEC 34 TO W 1/4 COR SEC 34 & 2657.82 VAR 7-00 FROM GEN SEC 34 TO E 1/4 COR SEC 34. CENTER OF SEC 34 SET EQUAL DISTANCE FROM 1/4 CORNERS.
- 1868 LOCKE VOL 1 PG 323. & MAP #3695 SET OAK STAKE. SHOWS A DISTANCE OF VAR 7-37 1336.09 TO THE N 1/6TH CORNER OF THE NE 1/4 OF SECTION 3. THE CORNER IS 12.05 WEST OF THE S 1/4 CORNER OF SECTION 34 JANESVILLE TOWNSHIP. VAR 6-35 2751.54 TO GEN OF SEC 3.
- 18?? RUGER MAP #3782 FD COR SET BY SELF IN FORMER SURVEY. LIMESTONE (BROKEN) WITH 2 HH. PUT IN L.S. 8X8X24 SURROUNDED BY 4 L.S. 12.21' WEST OF S 1/4 COR SEC 34. @ S 1/4 COR SEC 34 FD COR SET BY SELF IN FORMER SURVEY- A HH 6X9X12 1/2 SURROUNDED BY 4 L.S. 2662.94 FROM N 1/4 COR SEC 3 TO NE COR SEC 3, 2758.80 TO CENTER OF SEC 3, & 2661.45 FROM N 1/4 COR SEC 3 TO NW COR SEC 3. @ N 1/4 COR SEC 3 THE SOUTH R/W LINE IS 34.82' & THE NORTH R/W LINE IS 29.54'. WEST 665.28' ON SEC LINE SET WEDGE SANDSTONE 16" LONG TOP 3 1/2 X4 & 11 1/2 ACROSS BASE SURROUNDED BY 4 L.S. AT THE WEDGE SANDSTONE THE SOUTH R/W LINE IS 34.82 AND THE NORTH R/W LINE IS 31.18'. @ NW COR SEC 3 DROVE STAKE SURROUNDED BY 5 L.S. COR IS 19.8' WEST OF SW COR OF SEC 34. @ SW COR SEC 34 FD REMAINS OF CEDAR POST UNDER GROUND IN LINE N/S FENCE. DROVE CHERRY STAKE IN ITS PLACE SURROUNDED BY HH.
- 1892 BLEEDORN VOL 2 PG 464 FOUND CORNER SET LIMESTONE AND SURROUNDED IT BY 4 HARDHEADS. SHOWS THE CORNER 12.21 WEST OF THE S 1/4 CORNER OF SECTION 34 JANESVILLE TOWNSHIP. SHOWS A DISTANCE OF 2676.96(?) TO THE NE CORNER OF SECTION 3.
- 1919 UNKOWN MAP#3776 7X8X15 LS ON END 12.21' WEST OF S 1/4 COR SEC 99.2' SW OF NAIL? IN SOUTH FACE OF POLE 3-12-34, 29.2 NW OF 8" CHERRY. WESTERLY 665.28 TO NE CORNER OF A 281.8' LOT WHICH IS 773 DEEP. 5X8X15 W. HH @ S 1/4 COR SEC 34. ABSTRACT NO 4
- 1932 SUNNY VOL 3 PG 209 FOUND 7X8X15 LIMESTONE ON END. SHOWS A DISTANCE OF 12.2' TO THE S 1/4 CORNER OF SECTION 34.

Embloss Seal  
Donald Baues  
May 31 2007

SHEET 1 OF 7  
CORNER CODE A-15(3)

RO508 N<sup>1</sup>/<sub>4</sub>COR SEC 3

- 1961 BATTERMAN MAP #05869 @ N <sup>1</sup>/<sub>4</sub> COR SEC 3 DUG & FD 2" PIPE 12.7W OF H.H., @ S <sup>1</sup>/<sub>4</sub> COR SEC 34 DUG & FD HH 5X8X15, @ SE COR SEC 34 FD COR & REFERENCE, PIPE 1331.00 FROM 1/16<sup>TH</sup> COR TO S <sup>1</sup>/<sub>4</sub> COR SEC 34 & SE COR SEC 34, 2654.20 FROM S <sup>1</sup>/<sub>4</sub> COR SEC 34 TO CENTER OF SEC 34, & ANGLE 89-14-10 @ SE COR SEC 34 FROM S <sup>1</sup>/<sub>4</sub> COR SEC 34 TO E <sup>1</sup>/<sub>4</sub> COR SEC 34. TIES OF S <sup>1</sup>/<sub>4</sub> COR SEC 34 ARE THE RECORD TIES SHOWN IN A-15. IN DRAWING THERE IS A POINT 9.77' EAST OF THE S <sup>1</sup>/<sub>4</sub> COR SEC 34. @ THIS PT THERE IS A N/S LINE WITH NOTE: STRAIGHT LINE FROM N <sup>1</sup>/<sub>4</sub> COR THROUGH THE CENTER OF SEC PROJECTED SOUTH.
- 1962 BATTERMAN JR. VOL 4 PG 126 FOUND 2" PIPE @ N <sup>1</sup>/<sub>4</sub> COR & 5X8X15 HH @ S <sup>1</sup>/<sub>4</sub> COR SEC 34 AND REFERENCED THEM. SHOWS A DISTANCE OF 12.71 TO S <sup>1</sup>/<sub>4</sub> CORNER OF SECTION 34. NOTE: BOTH REFENENCES ARE FROM THE JANESVILLE CITY ENG. OFFICE.
- 1962 THOM MAP#03750 FD 2" PIPE THENCE EAST 331.80 TO PIPE @ NW COR OF 160.00 LOT THENCE 202.77 TO PK @ BRIDGE. R/W IS 33.00 @ LOT. SHOWS S <sup>1</sup>/<sub>4</sub> COR SEC 34 EAST OF CORNER.
- 1964 DOBSON - WPL - STATES NOTHING ABOUT COR. WESTERLY 1000.0 FROM NE COR SEC 3 TO NAIL ON SECTION LINE. ANGLE OF 90-27 @ NE COR SEC 3 FROM EAST SECTION LINE OF SEC 3 TO NORTH LINE OF SEC 3.
- 1968 LEE VOL 6 PG 71 SHOWS A DISTANCE OF 2685.54 TO THE CENTER OF SECTION 3.
- 1975 WPL - SPRAGUE MAP#03772 STATES NOTHING ABOUT MON. CALLS FOR NAD27 246,278.53; 2,252,489.68 @ N <sup>1</sup>/<sub>4</sub> COR SEC 3, 246,234,.89; 2,249,846.79 @ NW COR SEC 3. INV OF S89-03-14W 2663.06 FROM N <sup>1</sup>/<sub>4</sub> COR TO NW COR SEC 3 & ANGLE OF 90-41-44 @ NW COR SEC 3 FROM N <sup>1</sup>/<sub>4</sub> COR SEC 3 TO W <sup>1</sup>/<sub>4</sub> COR SEC 3.
- 1981 COMBS #13201 FD ALUM @ N <sup>1</sup>/<sub>4</sub> COR SEC 3, FD CI @ S <sup>1</sup>/<sub>4</sub> COR SEC 34, 2655.33 FROM S <sup>1</sup>/<sub>4</sub> COR SEC 34 TO SW COR SEC 34, S89-10-50E 2663.00 FROM S <sup>1</sup>/<sub>4</sub> COR SEC 34 TO SE COR SEC 34, N88-08-30W 12.18 FROM S <sup>1</sup>/<sub>4</sub> COR SEC 34 TO N <sup>1</sup>/<sub>4</sub> COR SEC 3. SET PIPE 33.00 NORTH OF <sup>1</sup>/<sub>4</sub> COR.
- 1981 BARNES VOL 6 PG 154 FOUND 2" IRON PIPE AND REFERENCE TIES. REPLACED PIPE WITH ALUMINUM MONUMENT WHICH IS ON TOP OF STONE OF RECORD. ROCK TWP FIELD BOOK #2 PG 4 & 5 DATED MAR 1981 FD 2" PIPE & TIES @ N <sup>1</sup>/<sub>4</sub> COR SEC 3. DID NOT MEASURE TO REFERENCE PIPES. REPLACED PIPE WITH ALUM ON TOP OF REC STONE. AT S <sup>1</sup>/<sub>4</sub> COR SEC 34 FD 9" NAIL. REPLACED IT WITH CI. ON TOP OF REC. STONE. FD 2" PIPE 319.53 EAST OF CI, PK 1055.71 WEST OF SE COR SEC 34. PK IS 0.08' NORTH OF LINE BETWEEN SE 34 & CI. MEASURED 2663.13 (REC BATTERMAN 2662.00) FROM S <sup>1</sup>/<sub>4</sub> COR SEC 34 TO SE COR SEC 34.
- 1981 BARNES VOL 6 PG 186 FOUND ALUMINUM MONUMENT SHOWS THE FOLLOWING DISTANCES:
- |                  |               |                    |
|------------------|---------------|--------------------|
| TO: NW COR SEC 3 | LOCKE 1866    | 2661.13            |
|                  | RUGER         | 2661.45            |
|                  | BARNES        | N89-29-33E 2663.10 |
| NE COR SEC 3     | BLEEDORN 1892 | 2676.96            |
|                  | BARNES        | N88-27-03E 2675.10 |
- ALSO SHOWS WPL COORDINATES AS N/S 246,278.53; E/W 2,252,489.68  
AND MEASURED COORDINATES AS N/S 246,278.63; E/W 2,252,489.66

SHEET 2 OF 7

CORNER CODE **A-15(3)**

Enclos Seal

*Donald Barnes*  
*May 31 2007*

- RO508 N $\frac{1}{4}$ COR SEC 3
- 1982 TRUE MAP #3783 ALUM MON @ S  $\frac{1}{4}$  COR SEC 34  
246,278.544; 2,252,489.656, @ SE COR SEC 34 DRILL HOLE  
IN M.H. COVER 246,350.788; 2,255,163.725.
- 1983 SCHNEEBERGER A-15 FD ALUM & CI @ S  $\frac{1}{4}$  COR SEC 34.  
REFERENCED CORNERS WITH NEW REFERENCE MONUMENTS.  
CALLS FOR N  $\frac{1}{4}$  COR SEC 3 WEST OF S  $\frac{1}{4}$  COR SEC 34 BY  
12.18' STATES COORDINATES FOR THE N  $\frac{1}{4}$  COR SEC 3 AS  
246,278.63; 2,252,489.66'
- 1983 SCHNEEBERGER MAP#03784 FD ALUM. S89-29-33W  
1956.90 TO NE COR OF A 188.50 LOT. 45.00 FROM NE COR  
OF LOT TO PIPE ON R/W LINE & 52.36 FROM NW COR OF LOT  
TO PIPE ON R/W LINE.
- 1985 LEE CSM VOL 12 PG 51 FD CI. S0-38-05W 1548.63 TO PIPE.
- 1986 BARNES JANESVILLE TWP PROJECT. JUNE 9 OBSERVATION  
SHEET #22 CALLS FOR EASTERN AND WESTERN MONUMENT  
AT S  $\frac{1}{4}$  COR & N  $\frac{1}{4}$  COR .
- 1987 BARNES Z-15 FD REF. PIPES, FD ALUM MON @ N  $\frac{1}{4}$  COR SEC  
3, FD CI. @ S  $\frac{1}{4}$  COR SEC 34, FOR S  $\frac{1}{4}$  COR CALLS FOR  
246,279.90; 2,252,501.84 ELEV 819.3 FOR N $\frac{1}{4}$  COR SEC  
3 CALLS FOR 246,279.80; 2,252,489.64 & WPL  
COORDINATES OF 246,278.53; 2,252,489.68 JANESVILLE  
FIELD BOOK #2 PG 7 DATED APRIL 3, 1987. FD CI AT S  $\frac{1}{4}$   
COR SEC 34 & ALUM @ N  $\frac{1}{4}$  COR SEC 3. FD PIPE @ NE, SE, &  
SW REFERENCE MONUMENTS. FD REROD FOR NW REFERENCE  
MONUMENT. JUST SHOWS RECORD DISTANCES.
- 1988 BARNES JANESVILLE REMONUMENTATION PROJECT. S89-28-  
47W 12.20 FROM THE S  $\frac{1}{4}$  COR SEC 34 TO THE N  $\frac{1}{4}$  COR SEC  
3, N88-26-26E 2663.18 FROM THE S  $\frac{1}{4}$  COR SEC 34 TO THE  
SE COR SEC 34, S89-28-49W 2655.36 FROM THE S  $\frac{1}{4}$  COR  
SEC 34 TO THE SW COR SEC 34, & N88-42-49W 20.04' FROM  
THE SW COR SEC 34 TO THE NW COR SEC 3.
- 1988 BARNES VOL 6 PG 382 SHOWS RECORD DISTANCES &  
COMPUTED INVERSES. S  $\frac{1}{4}$  COR SEC 34 TO SW COR SEC 34  
S89-28-49W 2655.49, S  $\frac{1}{4}$  COR SEC 34 TO SE COR SEC 34  
N88-26-25E 2663.18, N2-19-10W 2654.18 TO CENTER OF  
SEC 34, N2-31-26W 2678.48 FROM CEN TO N  $\frac{1}{4}$  COR SEC 34,  
N88-31-22E 2661.08 FROM CEN TO E  $\frac{1}{4}$  COR SEC 34, & S89-  
20-59W 2660.13 FROM CEN TO W  $\frac{1}{4}$  COR SEC 34.
- 1990 BARNES A-15(1) FOUND ALUM. MONUMENT. FOUND 4  
REFERENCE MONUMENTS. CALLS FOR 12.18 WEST OF CI @ S  
 $\frac{1}{4}$  COR SEC 34. SHOWS RECORD TIE DISTANCES. NAD27  
246,279.69; 2,252,489.72 JANESVILLE TWP PROJECT -  
246,279.80; 2,252,489.64, WPL 246,278.53, 2,252,489.68  
SCHNEEBERGER 246,278.63; 2,252,489.66
- 1990 SCHNEEBERGER A-15(2) FD ALUM. MON. SET NEW TIES.  
SHOWS STATE PLANE COORDINATES OF 246,278.63;  
2,252,489.66 SHOWS 12.18' WEST OF ALUM. MON. @ S  $\frac{1}{4}$   
COR SEC 34.
- 1990 COMBS CSM VOL 14 PG 277 @ N  $\frac{1}{4}$  COR SEC 3 FD ALUM.  
USED AS LINE FOR SURVEY COMMENCING AT A DRILL HOLE  
IN MH COVER @ NE COR SEC 3 AND GOING WESTERLY 999.89  
FROM THE NE COR.
- 1991 BARNES ROCK TWP REMON. PROJECT. N89-05-19E 2675.33  
TO THE NE COR SEC 3, S89-51-50E 2663.20 TO THE NW COR  
SEC 3, & S89-52-34E 12.22' TO THE S  $\frac{1}{4}$  COR SEC 34.  
ANGLE 90-14-34 @ NW COR SEC 3 FROM N  $\frac{1}{4}$  COR SEC 3 TO  
W  $\frac{1}{4}$  COR SEC 3, & ANGLE 181-02-51 @ N  $\frac{1}{4}$  COR SEC 3  
FROM NE TO NW CORNERS SEC 3.
- 1994 GRUBER CSM VOL 17 PG 368 FD CONG. MON/ALUM CAP @ S  
 $\frac{1}{4}$  COR SEC 34 & SE COR SEC 34. N88-26-42W 2663.15  
(2662.00) TO SE COR SEC 34 & N02-21-52W 2650.23  
(2649.44) FROM SE COR SEC 34 TO E  $\frac{1}{4}$  COR SEC 34. SE 34  
COORDINATES OF 246,352.31; 2,255,163.88

SHEET 3 OF 7

CORNER CODE A-15(3)

Eng. Laps Seal

*Rolf Barnes*  
May 31 2007

RD508 N $\frac{1}{4}$ COR SEC 3

1999 LATHROP MAP #7443 DOESN'T STATE TYPE OF MON.  
WESTERLY 1956.90 TO NE CORNER OF A 188.50 LOT. ON  
THE EAST SIDE THE SOUTH R/W LINE IS 44.24' & ON THE  
WEST SIDE OF THE LOT THE SOUTH R/W LINE IS 51.41'.  
CALLS FOR 2643.76 FROM THE N  $\frac{1}{4}$  COR SEC 3 TO THE SW  
COR OF SEC 34.

2001 KASTEN MAP #7953 FD ALUM & CI AT S  $\frac{1}{4}$  COR SEC 34.  
ALUM IS 12.18 WEST OF CI. FD ALUM AT NW SEC 3 & SW SEC  
34. NW 3 IS 20.05 WEST OF SW COR SEC 34. 384.10  
WESTERLY OF N  $\frac{1}{4}$  COR SEC 3 IS NE CORNER OF A 281.25  
LOT THAT IS 776.13 DEEP. 2663.83 FROM N  $\frac{1}{4}$  COR SEC 3  
TO NW COR SEC 3.

RYAN COMBS REPORTED THERE WAS A PROBLEM WITH THE ALUM.  
MONUMENT THAT HE UNCOVERED.

I FOUND THE REFERENCE PIPES ON THE NORTH SIDE OF THE  
CORNERS AND THE SW REFERENCE PIPE. SINCE MY PORTABLE  
JACK HAMMER IS IN THE REPAIR SHOP, I DID NOT DIG FOR THE  
MONUMENTS. THE DISTANCES SHOWN ARE TO RESOLVE HIS ISSUE  
WITH THE MOST EASTERLY ALUM. MON. THAT HE UNCOVERED. MY  
NEW TIES SHOULD BE USED ONLY TO LOCATE AND UNCOVER THE  
EXISTING MONUMENTS. THEY SHOULD NOT BE USED TO ESTABLISH  
THE POSITIONS OF THE N  $\frac{1}{4}$  COR OF SEC 3 OR THE S  $\frac{1}{4}$  COR OF SEC  
34. THE ALUM. MONUMENT THAT RYAN UNCOVERED IS NOT A PLSS  
CORNER BUT COULD EASILY BE MISTAKEN AS ONE.

*C) Was the corner restored through acceptance of (1) an obliterated evidence location, or, (2) a found  
perpetuated location?*

THE FD ALUM MON THAT IS 9.2 EAST OF THE S  $\frac{1}{4}$  COR SEC 34 IS  
THE LOCATION THAT BATTERMAN CALLS FOR IN 1961 AS THE  
SOUTHERLY PROJECTION OF THE GEN & N  $\frac{1}{4}$  COR OF SEC 34. HE FD  
THE STONE OF RECORD @ THE S  $\frac{1}{4}$  COR SEC 34 BUT ESTABLISHED  
THIS POINT AS MATTER OF RECORD.

IT APPEARS THAT IN 1866 LOCKE SUBDIVIDED SEC 3 AND TO  
ESTABLISH THE POSITION OF THE N  $\frac{1}{4}$  COR OF SEC 3 HE DIVIDED  
HIS MEASURED JOG DISTANCE OF 19.8 AT THE NW COR OF SEC 3  
BY 2 (9.9). THEN IN 1868 HE SET A OAK STAKE 12.05' WEST OF THE  
S  $\frac{1}{4}$  COR SEC 34.

IN 18?? RUGER FOUND THE COR HE SET WHICH WAS A LIMESTONE  
(BROKEN) AND SURROUNDED BY 2 HH 12.21 WEST OF THE S  $\frac{1}{4}$  COR  
SEC 34. HE PLACED A 8X8X24 LIMESTONE SURROUNDED BY 4 LS.

IN 1892 BLEEDORN FOUND THE CORNER & SET A LIMESTONE  
SURROUNDED BY 4 HH.

IN 1919 AN UNKOWN PERSON CALLS FOR A 7X8X15 LS ON END  
12.21 WEST OF S  $\frac{1}{4}$  COR SEC 34. REFERENCED TO TREE &  
ELECTRIC POLE.

IN 1932 SUNNY FOUND 7X8X15 LIMESTONE ON END.

IN 1961 BATTERMAN DUG & FOUND A 2" PIPE 12.7 WEST OF A  
5X8X5 HH @ THE S  $\frac{1}{4}$  COR SEC 34.

SHEET 4 OF 7

CORNER CODE **A-15(3)**

Emboss Seal  
*Donald Barnes*  
*May 31 2007*

IN 1981 BARNES FOUND A 2" PIPE & THE REFERENCE TIES (DID NOT MEASURE TO TIES). REPLACED PIPE WITH ALUM. WHICH IS ON TOP OF STONE OF RECORD. ALSO IN 1981 I FOUND A 9" NAIL @ S ¼ COR SEC 34. REPLACED NAIL WITH CI, WHICH IS ON TOP OF RECORD STONE.

ACCEPTED ALUM @ N ¼ COR SEC 3 AND CI AT S ¼ COR SEC 34, WHICH ARE IN HARMONY WITH BATTERMAN'S 1961 REFERENCE TIES.

*D) Describe any material discrepancy between the location of the corner as restored or reestablished and the location of that corner as previously restored or reestablished by distance and direction. Show the discrepancy on the plan view drawing under (a), above. Show the distances between the corner as previously restored or reestablished and (1) the corner as restored or reestablished, and (2) to at least 4 of the witness monuments shown on the drawing in (a), above.*

THERE IS NO DISCREPANCY. HOWEVER, ONE SHOULD BE AWARE THERE ARE 2 ALUM. MON. & 1 C.I. MON. THE FARTHEST EAST ALUM. MON IS NOT INTENDED TO BE A ¼ CORNER, BUT BATTERMAN'S 1961 POINT OF PROJECTING THE GEN & N ¼ COR OF SEC 34.

*(E) Was the corner reestablished through lost corner proportionate methods? If so, show the method, including the directions and distances to other public land survey corners used as evidence or used for proportioning the corner location.*

I, **Donald Barnes**, hereby certify that the corner location as identified by the corner code index was determined by me under my direction and control and that this U.S. Public Land Survey Monument Record is correct and complete to the best of my knowledge and belief.

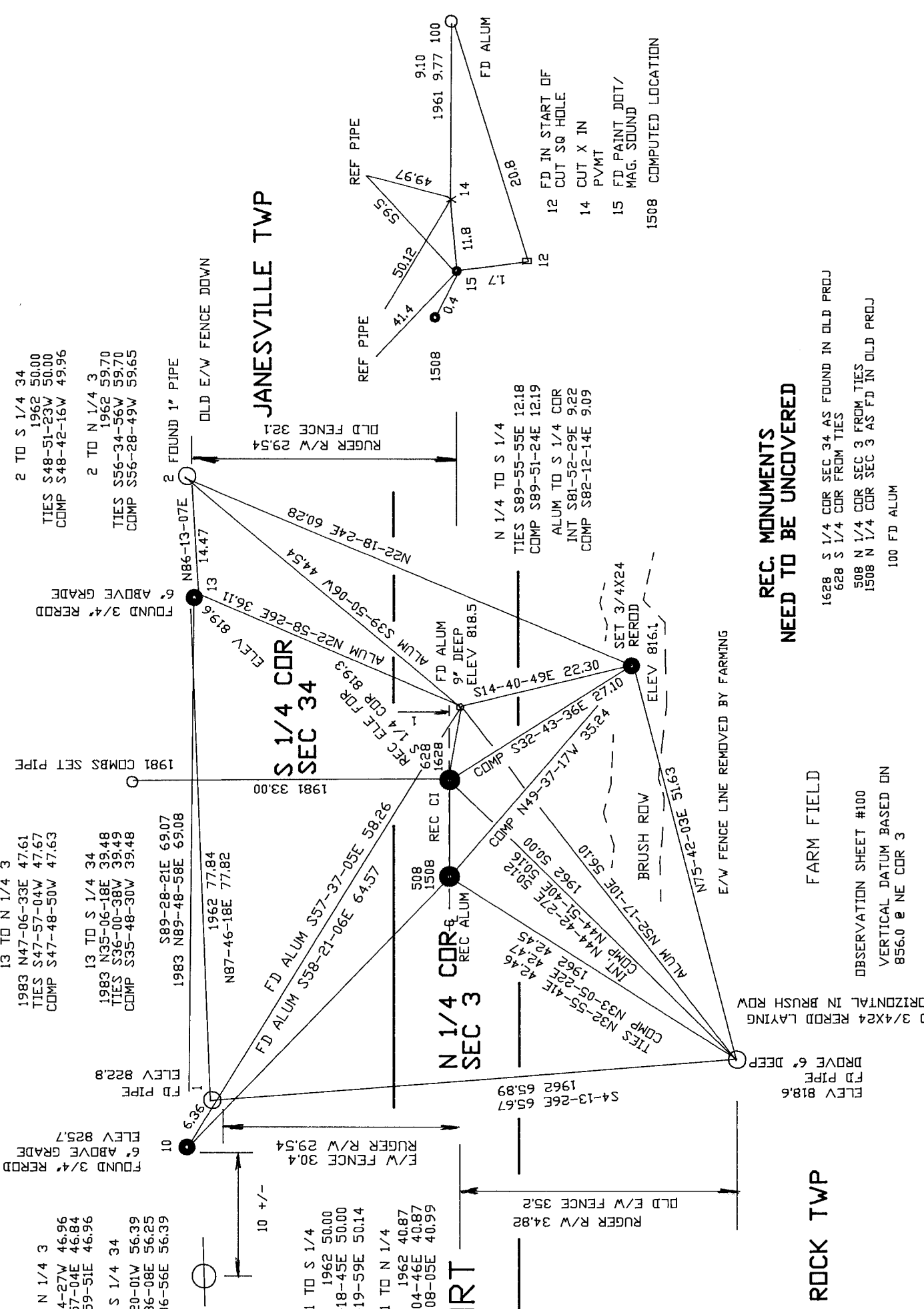
*Donald Barnes*  
Seal  
*Barnes*  
Emboss  
*May 31 2007*

SHEET 5 OF 7

CORNER CODE

**A-15(3)**

A.E. 7.08 REQUIREMENT



10 TO N 1/4 3  
 1983 N45-44-27W 46.96  
 TIES S45-57-04E 46.84  
 COMP S45-59-51E 46.96

10 TO S 1/4 34  
 1983 N55-20-01W 56.39  
 TIES S54-36-08E 56.25  
 COMP S54-36-56E 56.39

13 TO N 1/4 3  
 1983 N47-06-33E 47.61  
 TIES S47-57-04W 47.67  
 COMP S47-48-50W 47.63

13 TO S 1/4 34  
 1983 N35-06-18E 39.48  
 TIES S36-00-38W 39.49  
 COMP S35-48-30W 39.48

2 TO S 1/4 34  
 1962 50.00  
 TIES S48-51-23W 50.00  
 COMP S48-42-16W 49.96

2 TO N 1/4 3  
 1962 59.70  
 TIES S56-34-56W 59.70  
 COMP S56-28-49W 59.65

1 TO S 1/4  
 1962 50.00  
 TIES S53-18-45E 50.00  
 COMP S53-19-59E 50.14

1 TO N 1/4  
 1962 40.87  
 TIES S43-04-46E 40.87  
 COMP S43-08-05E 40.99

N 1/4 TO S 1/4  
 TIES S89-55-55E 12.18  
 COMP S89-51-24E 12.19  
 ALUM TO S 1/4 COR  
 INT S81-52-29E 9.22  
 COMP S82-12-14E 9.09

ROCKPORT RD

FARM FIELD

REC. MONUMENTS  
 NEED TO BE UNCOVERED

1628 S 1/4 COR SEC 34 AS FOUND IN OLD PROJ  
 628 S 1/4 COR FROM TIES  
 508 N 1/4 COR SEC 3 FROM TIES  
 1508 N 1/4 COR SEC 3 AS FD IN OLD PROJ  
 100 FD ALUM

EMBOSSSED SEAL  
*Old*  
*Raines*  
 May 31 2007

A-15(3)

SHEET 6 OF 7

12 FD IN START OF CUT SQ HOLE  
 14 CUT X IN PVMT  
 15 FD PAINT DOT/MAG. SOUND  
 1508 COMPUTED LOCATION

E/W FENCE LINE REMOVED BY FARMING

FD 3/4X24 REROD LAYING  
 HORIZONTAL IN BRUSH ROW  
 SET 3/4X24 REROD  
 ELEV 816.1  
 BRUSH ROW  
 ELEV 816.1  
 N75-42-03E 151.5

A-15(3)

Royal  
Barnes  
May 31 2007

ROCK SEC TWP 3

JANESVILLE TWP  
SEC 34

1975 SPRAGUE N89-02-44E 19181  
S88-01-36E 20.01  
2001 KASTEN 20.05  
1988 BARNES N88-42-49V 20.04  
1877 RUGER 1918  
1866 LOCKE 1918  
DRIG 33.0

1999 LATHROP N 1/4 3 TO SW 34 2643.76  
N 1/4 3 TO SW 34 N89-52-53W 2643.21  
S89-52-52E 2655.41  
OLD TIES S89-52-58E 2655.28  
1988 BARNES N88-28-49V 2655.36  
1988 BARNES S89-28-49V 2655.49  
1981 COMBS 2655.33  
1833 BRINK 2640

1961 BATTERMAN CEN-NW-1/4 PRD  
ALUM S88-12-14E 9.22  
1988 BARNES N2-19-10V 2654.18  
1961 BATTERMAN 2654.20  
1932 SUNNY 2654.20  
1866 LOCKE 2654.20  
S 1/4 COR 5326.04  
1988 BARNES N2-31-26V 2678.48  
1866 LOCKE 2663.02

1866 LOCKE 2661.12  
1877 RUGER 2661.45  
1975 SPRAGUE N89-03-14E 2663.06  
1981 BARNES S89-29-33W 2663.10  
1991 BARNES TWP PROJ N89-51-50W 2663.20  
OLD TIES S89-52-07E 2663.10  
S89-52-07E 2663.21  
S89-52-03E 2663.21  
2001 KASTEN 2663.83  
file rosec3

1991 BARNES TWP PROJ 2001 KASTEN 1218  
S89-52-34E 1218  
1990 SCHREIBERGER 1218  
1990 BARNES 1218  
1988 BARNES S89-28-47W 1220  
1981 COMBS S88-08-30E 1218  
1962 BATTERMAN 1271  
1932 SUNNY 1221  
1977 UNKNOWN 1221  
1892 BLEEDORN 1221  
1868 LOCKE 1205  
1877 RUGER 1221  
1866 LOCKE 9.9  
N 1/4 COR 2751.54

1866 LOCKE 2751.54  
1868 LOCKE VAR 6-35 2751.54  
1987 BARNES 246,279.90, 2,252,501.84 ELEV 819.3  
1982 TRUE 246,278.544, 2,252,489.656  
1994 GRUBER 246,352.31, 2,255,163.88  
ALUM N89-02-59E 2654.144  
1331.00 1961 BATTERMAN 1331.00  
N89-04-46E 2663.13  
OLD TIES N89-04-51E 2663.24  
1994 GRUBER S88-26-42E 2663.18  
1988 BARNES N88-26-25E 2663.18  
1982 TRUE S88-26-47W 2663.03  
1981 COMBS S89-10-50W 2663.00  
1961 BATTERMAN 2662.00  
1866 LOCKE VAR 7-40 2660.13  
1833 BRINK 2640

1868 LOCKE VAR 7-37 2672.18  
1892 BLEEDORN 2676.96  
1877 RUGER 2662.94  
1981 BARNES N88-27-03E 2675.10  
1991 BARNES TWP PROJ N89-05-19E 2675.33  
OLD TIES N89-05-08E 2675.42  
N89-05-03E 2675.32  
N89-02-59E 2654.14 FD ALUM  
15-20-20 TWP PROJ  
BARNES 1661  
NW TO NE SEC 3  
1866 LOCKE 5331.15  
1877 RUGER 5324.39  
1981 BARNES 5338.16  
1991 BARNES 5338.53  
2007 BARNES 5338.53

1982 TRUE 246,350.789, 2,255,163.725 DRIG 0  
1964 BATTERMAN 89-11-45  
01-41-68  
1982 TRUE 90-21-28  
1964 BARNES 90-21-28

1866 LOCKE VAR 7-00 2657.82  
1988 BARNES N88-31-22E 2661.08  
2000 COMBS 2661.18

1982 TRUE 246,350.789, 2,255,163.725 DRIG 0  
1994 GRUBER N02-21-52W 2650.23