

Paper weight-110# (minimum)

Black nonfading ink required

U.S. PUBLIC LAND SURVEY MONUMENT RECORD

For Public Land Survey Corners In:

WI ADMINISTRATIVE CODE A-E 7.08 REQUIREMENT

T. 2 N. R. 12 E. 4th P.M.

REV 10/23/2004

USMONREC.DWG

CORNER CODE INDEX

	2	4	5	6	7	8	9	10	11	12	13	14	15	16	17	18	19	20	21	22	23	24	25	
A																								
B	6																							
C																								
D																								
E																								
F																								
G	7																							
H																								
J																								
K	18																							
L																								
M																								
N																								
O																								
P	19																							
Q																								
R																								
S																								
T																								
U	30																							
V																								
W																								
X	31																							
Y																								
Z																								

Rock TWP

ROCK COUNTY WI

IF AVAILABLE
ROCK COUNTY COORDINATES PREFERRED

North _____ Elev. _____

East _____

Hor. Datum _____ Vert. Datum _____

LATITUDE _____ ELLIPS. HT. _____

LONGITUDE _____

NAD83(91) _____ NETWORK ADJ. YR _____

GPS (X) _____ TRAVERSE (X) _____

BASED ON THE FOLLOWING CONTROL:

◆ CORNER MONUMENT ○ WITNESS MONUMENT

BEARINGS ARE BASED ON: -----

FIELD BOOK _____ PAGE # _____

SHEET 1 OF 5

SHOW A PLAN VIEW DRAWING DEPICTING THE CORNER MONUMENT AND SURROUNDING PHYSICAL FEATURES, INCLUDING THE EXCAVATION AREA AND DEPTH.

PLANNING & ZONING COMMITTEE ADOPTED THIS FORM ON 12/2/1982

CORNER CODE A-3(4)

R0502 N1/4CORSEC 6

(B) Describe any record evidence, monument evidence, occupational evidence, testimonial evidence or any other material evidence you considered, and whether the monument was found or placed.

- 1833 HARRISON ORIGINAL GOVERNMENT SURVEYOR. S 1/4 CORNER OF SECTION 31 JANESVILLE TOWNSHIP. SET QUARTER SECTION POST. BUR OAK 8 N89E 110.22', BUR OAK 10 N 12 1/2 W 182.82. SHOWS 2600.4' TO THE NW CORNER OF SECTION 6 AND 2640 TO THE SE CORNER OF SECTION 31 JANESVILLE TOWNSHIP.
- 1854 Mc VEAN VOL 1 PG 23. SHOWS 2698.74 TO CENTER OF SECTION 6 AND 5315.31' TO SOUTH QUARTER CORNER OF SECTION 6.
- 1859 RUGER VOL 1 PG 110 S 1/4 COR SEC 31 SURROUNDED POST WITH 2 HARD HEADS & 1 LIMESTONE & TOOK WITNESS TREES BUR OAK 16 S58-37W 149.82', BURR OAK 10 S42E 99.0' VAR 7-35. VAR 7-35 2670.36 FROM S 1/4 COR TO SE COR SEC 31, VAR 9-19 2670.36 FROM S 1/4 TO CEN OF SEC 31
- 1866 LOCKE VOL 1 PG 265 FOUND CORNER AS SET BY RUGER AND EAST B.T. RESET STAKE (STAKE SURROUNDED 3 HH) SHOWS 2692.31' TO CENTER OF SECTION 6 AND 5340.06 TO SOUTH QUARTER CORNER OF SECTION 6.
- 1870 RUGER VOL 2 PG 43 SET LIMESTONE 20X11X9 14.36 EAST OF SOUTH QUARTER CORNER OF SECTION 31 JANESVILLE TOWNSHIP. AT SOUTH QUARTER CORNER OF SECTION 31 FOUND CORNER ESTABLISHED BY SELF. SHOWS FROM THE NORTH QUARTER CORNER OF SECTION 6 2629.04 (VAR 6-42) TO THE NW CORNER OF SECTION 6 AND 2652.13 (VAR 6-45) TO THE NE CORNER OF SECTION 6.
- 1933 SUNNY VOL 3 PG 234 SET 1"X36" PIPE IN CONCRETE PAVEMENT 3.8' NORTH OF CENTER OF PAVEMENT. CORNER IS 14.35' EAST OF SOUTH QUARTER CORNER OF SECTION 31 JANESVILLE TOWNSHIP. SHOWS 2629.45 TO NW CORNER OF SECTION 6.
- 196? PARK SURVEY #6887 CONTROL FOR I-90 DISK IN CONC. 362' SOUTH OF CENTER OF STH 11, 26 WEST OF CENTER OF KESSLER RD., 2.4 EAST OF TELE POLE. ELEV 903.48' 245,788.58; 2,236,524.05
- 1970 BATTERMAN JR. VOL 4 PG 432 FOUND 1" PIPE AT NORTH QUARTER CORNER OF SECTION 6. PIN AT SOUTH QUARTER CORNER OF SECTION 31 WHICH IS 14.35' WEST OF NORTH QUARTER CORNER. REFERENCED SAME. SHOWS WPL COORDINATES OF N/S 246,152.39;E/W 2,236,554.33
- 1970 THOM Z-3 FOUND 3/4 " IRON PIN 3.8' NORTH OF CENTER LINE OF PAVEMENT AND EAST OF SOUTH QUARTER CORNER OF SECTION 31. SET 1" PIPES @ REFERENCE MONUMENTS.
- 1974 LEE VOL 5 PG 53 CEN OF SEC 6 SET BY PRORATION BETWEEN FENCE JUNCTIONS AT E & W 1/4 CORS. & REFERENCED. 2657.40 FROM CEN TO S 1/4 COR SEC 6
- 1975 SPRAGUE #5846 N 1/4 COR SEC 6 (COMPUTED) 246,152.39; 2,236,554.33. NE COR SEC 6 246,172.92; 2,239,213.57. N89-33-28E 2659.32 FROM N 1/4 TO NE COR SEC 6
- 1985 COMBS GSM VOL 12 PG 132 FD PK LINE TO PIPE @ CEN SEC 6.
- 1987 JULY BARNES Z3 (1) FOUND ALL REFERENCE PIPES AS SHOWN IN VOLUME 4 PG 432. WPL 246,152.28; 2,236,539.98 MY COORDINATES OF 246,153.10; 2,236,540.23 FOR S 1/4 COR SEC 31. N 1/4 COR SEC 6 ROCK TWP WPL 246,152.39; 2,236,554.33.
- 1987 DOT PLACED PK AT THE S 1/4 CORNER OF SECTION 31 JANESVILLE TWP.

Donald
Barnes 10/20/2009

RO502 N1/4CORSEC 6

- 1988 BARNES VOL 6 PG 378 SB9-37-32W 2619.46 FOM S 1/4 COR SEC 31 TO SW COR SEC 31, N89-33-33E 2673.54 FROM S 1/4 COR SEC 31 SE COR SEC 31, N2-33-19W 5332.05 FROM S 1/4 COR SEC 31 TO N 1/4 COR SEC 31. SE COR SEC 31 TO E 1/4 COR SEC 31 N3-01-38W 2667.32. SW COR SEC 31 TO W 1/4 COR SEC 31 NO-58-54W 2666.94
- 1990 WIDOT #16695 STH 11 PROJ 1" PIPE @ N 1/4 COR SEC 6 246,153.69; 2,236,553.47 & 1" IRON PIN @ S 1/4 COR SEC 31 246,153.31; 2,236,539.56
- 1990 JULY BARNES A-3 JANESVILLE FIELD BK #1 PG 56. FOUND REF. PIPES. DID NOT MEASURE TO COR FROM REFERENCE PIPES. SHOWS WPL 246,152.39; 2,236,554.33 MY NAD27 246,153.40; 2,236,553.00 FOR N 1/4 COR SEC 6.
- 1991 BARNES Z-3(1) & A-3(1) AUGUST DUG & FD 1" PIPES AT THE S 1/4 CORNER OF SEC 31 AND THE N 1/4 COR SEC 6 AT A DEPTH OF 0.6'. MEASURED TO ALL REF. MONUMENTS. FOUND PK DOES NOT AGREE WITH FOUND PIPE. IT IS S78-02-36W 0.53 FROM THE FOUND PIPE. THE FOLLOWING BEARINGS AND DISTANCES ARE TO THE REFERENCE PIPES FROM THE FOUND PK: N47-56-36W 40.00, N45-23-03E 39.54, S40-18-43W 47.46, S36-52-57E 46.45.
- 1991 COMBS #11735 SET PK NAIL FROM COUNTY SURVEYORS REC.
- 1992 MAY. BARNES Z-3(2) & A-3(2) OBSERVATION SHEETS, & WIDOT FIELD NOTES FD PIPE @ CORNERS, 4 REFERENCE PIPES, & WIDOT REF. MONUMENTS. REFERENCED TO ALL REF. MONUMENTS. MONUMENT WILL BE DESTROYED BY CONSTRUCTION.
- 1992 NOV. BARNES Z-3(3) & A-3(3) OBSERVATION SHEETS FD WIDOT DISK @ S 1/4 COR SEC 31 ROCK TWP. & ALL 4 WIDOT DISKS IN CONC. FOR REFERENCE MONUMENTS. WIDOT CONSULTANTS INSTALLED WIDOT BRASS DISKS IN CONC.
- 2001 LATHROP MAP #14176 FD DISK @ S 1/4 COR SEC 31 & PK @ N 1/4 COR SEC 6. 2674.47 FROM S 1/4 COR SEC 31 TO DISK @ SE SEC 31. 14.30 BETWEEN N 1/4 COR SEC 6 & S 1/4 COR SEC 31. S 1/4 COR IS WEST OF N 1/4 COR
- 2002 COMBS CSM VOL 25 PG 318 FD DOT DISK @ S 1/4 COR SEC 31 & DOT @ SW COR SEC 31. 2619.0 BETWEEN THE TWO.
- 2005 COMBS CSM VOL 29 PG 260 FD DISK & DISK @ SW COR SEC 31. 2619.12 BETWEEN THE TWO.
- 2007 LATHROP CSM VOL 31 PG 14 FD DOT DISK @ S 1/4 COR SEC 31 SB9-34-51E 2674.37 TO FD PK @ SE COR SEC 31, & N1-54-55W 5332.08 TO FD PK @ N 1/4 COR SEC 31.

PRIOR TO THE RESURFACING PROJECT, I FD ALL 4 WIDOT REF. DISKS IN CONC. THE SE MON WAS DISTURBED. I FD WIDOT DISK NEAR THE S 1/4 COR SEC 31, JANESVILLE TWP. AFTER PAVING I FOUND PK/FLASHERS STAMPED "WIDOT SURVEY" @ S 1/4 & N 1/4 CORNERS.

S 1/4 COR SEC 31 IS WEST OF N 1/4 COR SEC 6 ROCK TWP.

D. D. James
10/20/2009

SHEET 2 OF 5
CORNER CODE A-3(4)

RO502 N1/4CORSEC 6

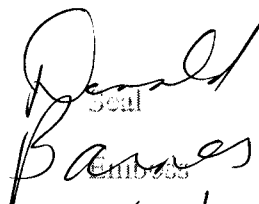
C) Was the corner restored through acceptance of (1) an obliterated evidence location, or, (2) a found perpetuated location?

ACCEPTED FD PKs. SUNNY'S 1933 1"X36" PIPE IN CONCRETE PAVEMENT IS 3.8' NORTH OF CENTER OF THE PVMT., BUT HE DID NOT STATE IF HE DUG AND FOUND RUGER'S LIMESTONE OR HOW HE PLACED THE PIPE. THE ELEVATIONS OF THE PAVEMENT & SURROUNDING GROUND INDICATES THAT RUGER'S 1870 20X11X9 LIMESTONE @ THE N 1/4 COR SEC 6 MAY STILL BE IN. THE NEXT TIME THE ROAD IS WORKED ON THE MONUMENT SHOULD BE EXCAVATED FOR.

D) Describe any material discrepancy between the location of the corner as restored or reestablished and the location of that corner as previously restored or reestablished by distance and direction. Show the discrepancy on the plan view drawing under (a), above. Show the distances between the corner as previously restored or reestablished and (1) the corner as restored or reestablished, and (2) to at least 4 of the witness monuments shown on the drawing in (a), above.

THE DISCREPANCIES ARE SHOWN IN THE DRAWING.

I, DONALD BARNES, hereby certify that the corner location as identified by the corner code index was determined by me under my direction and control and that this U.S. Public Land Survey Monument Record is correct and complete to the best of my knowledge and belief.


Seal
Emb 753
10/20/2009

SHEET 3 OF 5

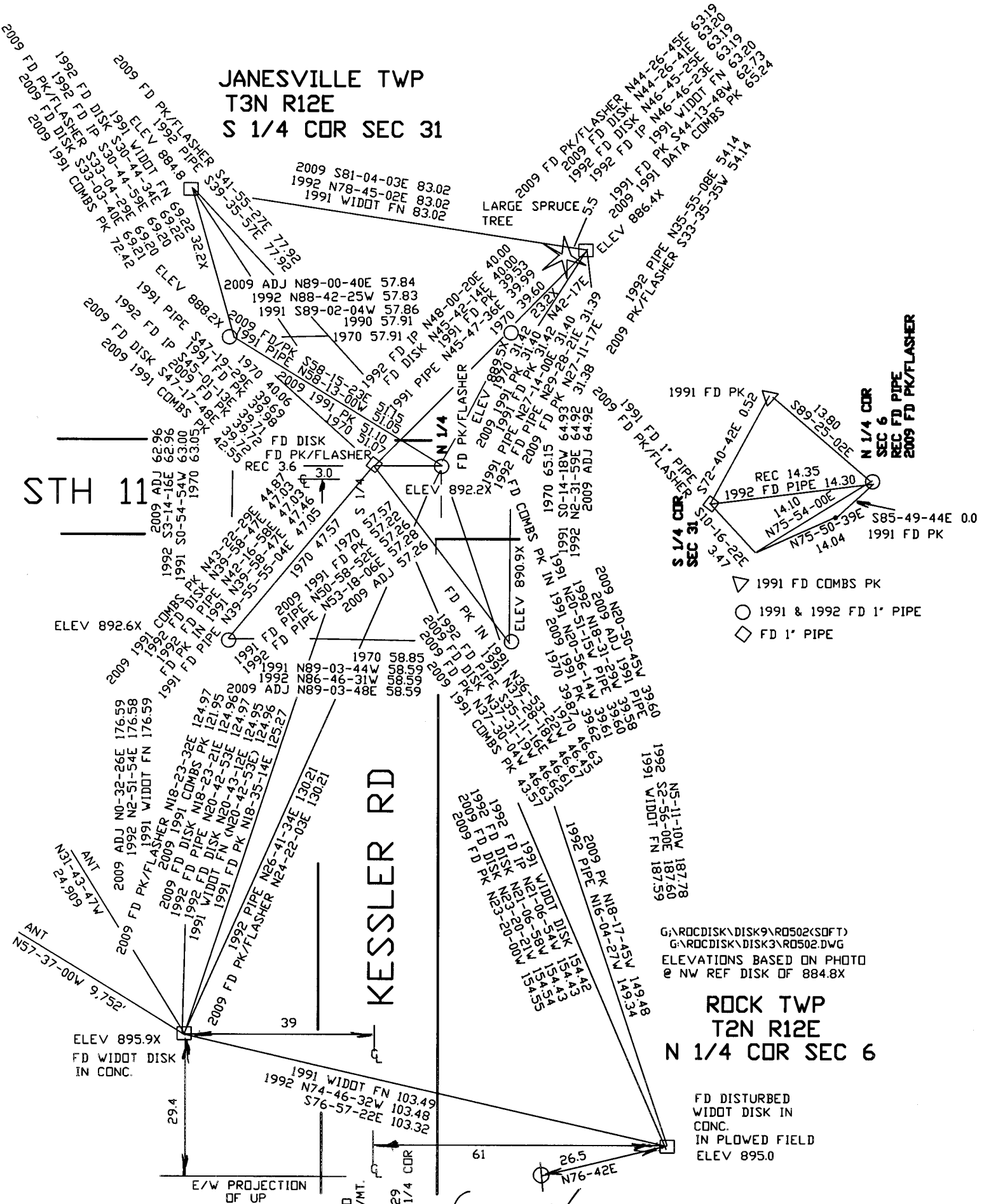
CORNER CODE A-3(4)
A.E. 7.08 REQUIREMENT

JANESVILLE TWP
T3N R12E
S 1/4 COR SEC 31

ROCK TWP
T2N R12E
N 1/4 COR SEC 6

STH 11

KESSLER RD



- △ 1991 FD COMBS PK
- 1991 & 1992 FD 1' PIPE
- ◇ FD 1' PIPE

G:\ARCDISK\DISK9\RD502(SOFT)
G:\ARCDISK\DISK3\RD502.DWG
ELEVATIONS BASED ON PHOTO
@ NW REF DISK OF 884.8X

ROCK TWP
T2N R12E
N 1/4 COR SEC 6

FD DISTURBED
WIDDIT DISK IN
CONC.
IN PLOWED FIELD
ELEV 895.0

1996? PARK AERIAL SURVEYS
DISK IN CONC.
FOR I-90 PROJ.
ELEV 903.48
245,788.58; 2,236,524.05

DID NOT
SEARCH FOR MON.

James Barnes

SHEET 4 OF 5

10-28-09 A-3(4)

EMBOSSED SEAL

1989 DDT ALUM
248,802.68) 2,233,875.02

1988 BARNES 6-378 N0-58-54W 2666.94
2009 ADJ N0-20-06W 2666.36
1989 DDT N0-57-54W 2666.26
1833 MULLETT VAR8-40 2640

SEC 31
JANESVILLE TWP
T3N R12E

2009 ADJ S89-33-53E 2546.34
2009 ADJ S89-44-39E 5197.79
1988 BARNES 6-378 N89-37-03E 5197.81

2009 ADJ N1-54-31W 5332.04
2007 LATHROP CSM31-14 N1-54-55W 5332.08
1988 BARNES 6-378 N2-33-19W 5332.05
1975 SPRAGUE #5846 N2-32-46W 5331.34
1989 DDT #16252 246,153.31) 2,236,539.56
1987 BARNES 2-30L 246,153.10) 2,236,540.23
1975 SPRAGUE #5846 246,152.28) 2,236,539.98

1975 SPRAGUE #5846
251,479.39) 2,236,302.72

1859 RUGER VOL1-110 VAR7-23 2688.84
2009 ADJ S89-54-59E 2651.48

SEC 31
JANESVILLE TWP
T3N R12E

1989 DDT ALUM
248,837.21) 2,239,072.42

1870 RUGER 2-43 14.36
1933 SUNNY 3*-234 14.35
1970 BATTERMAN 4-2348432 14.35
1989 DDT N88-26-06E 13.92
1990 BARNES REMON S89-56-40E 14.30
2001 LATHROP #14176 14.30
2009 ADJ S89-51-21E 14.30
1859 RUGER 1-110 VAR9-19 2670.36
2009 ADJ N1-54-19W 2661.09

2009 ADJ S89-45-57E 5293.53
1986 BARNES 6-378 5293.08
1989 DDT N89-36-02E 5293.12
1870 RUGER 2-43 5264.82
2009 ADJ S89-48-27E 2674.34
2007 LATHROP CSM31-14 S89-34-51E 2674.37
2001 LATHROP #14176 2674.47
1989 DDT N89-33-47E 2673.43
1986 BARNES 6-378 N89-33-33E 2673.54
1975 SPRAGUE #5846 N89-3-28E 2673.67
1870 RUGER 2-43 2650.14
1859 RUGER 1-110 VAR7-35 2670.36
1833 MULLETT VAR7-50E 2640

2009 ADJ S89-43-24E 2619.19
2002 COMBS CSM 2619.0X
1990 BARNES ROCK REMON S89-43-44E 2618.90
1989 DDT N89-38-20E 2619.69
1986 BARNES JANESVILLE REMON 2619.46
1933 SUNNY 3-234 2615.10
1870 RUGER 2-43 2614.68
1833 MULLETT VAR7-50E 2600.40

1989 DDT CUT L.S.
246,136.80) 2,233,919.92

2009 ADJ S0-04-37E 2656.84
1990 BARNES REMON S0-03-59E 2656.49
1989 DDT S0-42-31E 2656.69
1833 ORIG MULLETT 2640.0

SEC 6
ROCK TWP
T2N R12E

1870 RUGER 2-43 VAR 6-42 2629.04
1933 SUNNY 3-234 2629.45
1989 DDT N89-37-57E 2633.60
1990 BARNES REMON S89-43-49E 2633.20
2009 ADJ S89-43-27E 2633.48

1870 RUGER 2-43 VAR 6-45 2652.28
1975 SPRAGUE 2675.87
1990 BARNES REMON S89-43-48E 2676.55
2009 ADJ S89-48-33E 2676.58

SEC 6
ROCK TWP
T2N R12E

1834 HARRISON 2721.84
1990 BARNES REMON S0-01-10W 2752.92
2009 ADJ S0-0-55W 2752.84

2009 ADJ S88-36-23E 2650.71
1974 LEE VOL5-53 2651.43
1866 LOCKE #3789 2650.56
2009 ADJ S88-43-49E 5307.02
1974 LEE VOL5-53 5308.28
1866 LOCKE #3678 5306.53

1870 RUGER 2-43 5281.32
2009 ADJ 5310.06
2009 ADJ NW 6 TO SE SEC 31
S89-45-57E 5293.53

1866 LOCKE #3789 2655.97
1974 LEE VOL5-53 2656.85
2009 ADJ S88-51-14E 2656.32

1989 DDT CUT
243,480.31) 2,233,952.77

1990 BARNES A-3 246,153.40) 2,236,553.00
1989 WIDDT #6252 246,153.69) 2,236,553.47
1975 SPRAGUE #3804 COMPUTED
1975 SPRAGUE 246,152.39) 2,236,554.33

2009 ADJ S0-27-21E 5342.00
1990 BARNES REMON S0-27-06E 5342.17
1933 SUNNY 3-234 5340.10
1866 LOCKE #3789 & 1-265 5340.07
1854 McVEAN 1-23 5315.31

1854 McVEAN 1-23 2698.74
1866 LOCKE 1-265 2692.21
2009 ADJ S0-25-26E 2708.69

1866 LOCKE #3789 2647.76
1974 LEE VOL5-53 2657.40
2009 ADJ S0-29-19E 2633.31

Small
EMBOSSED SEAL

Barnes
10/20/2009