

Paper weight-110# (minimum)

Black nonfading ink required

U.S. PUBLIC LAND SURVEY MONUMENT RECORD

For Public Land Survey Corners In:
T. 4 N. R. 10 E. 4th P.M.
CORNER CODE INDEX

WI ADMINISTRATIVE CODE A-E 7.08 REQUIREMENT
REV 10/23/2004 USMONREC.DWG

UNION TWP

ROCK COUNTY WI

IF AVAILABLE
ROCK COUNTY COORDINATES PREFERRED

A	1	2	3	4	5	6	7	8	9	10	11	12	13	14	15	16	17	18	19	20	21	22	23	24	25	A
B		6					5					4				3				2				1		B
C																										C
D																										D
E																										E
F																										F
G																										G
H																										H
J																										J
K																										K
L																										L
M																										M
N																										N
O																										O
P																										P
Q																										Q
R																										R
S																										S
T																										T
U																										U
V																										V
W																										W
X																										X
Y																										Y
Z																										Z

PLACE MONUMENT SYMBOL AT PROPER LOCATION ON ABOVE INDEX

North _____ Elev. _____

East _____

Hor. Datum _____ Vert. Datum _____

LATITUDE _____ ELLIPS. HT. _____

LONGITUDE _____

NAD83(91) _____ NETWORK ADJ. YR 2010

GPS (X) _____ TRAVERSE (X)

BASED ON THE FOLLOWING CONTROL:

CORNER MONUMENT

WITNESS MONUMENT

(a)

ROCK COUNTY PROJECTION
BEARINGS ARE BASED ON: _____

FIELD BOOK _____ PAGE # _____

OR OBSERVATION SHEET _____

SHEET 1 OF 3

SHOW A PLAN VIEW DRAWING DEPICTING THE CORNER MONUMENT AND SURROUNDING PHYSICAL FEATURES, INCLUDING THE EXCAVATION AREA AND DEPTH.

PLANNING & ZONING COMMITTEE ADOPTED THIS FORM ON 12/2/1982

CORNER CODE X-1(1)

UN614 W1/4CORSEC31

(B) Describe any record evidence, monument evidence, occupational evidence, testimonial evidence or any other material evidence you considered, and whether the monument was found or placed.

- 1833 BRINK OBS AT THIS CORNER VAR 8-10E WEST ON SOUTH SIDE SECTION 36 T4N R9E
- 2640.00 SET 1/4 SECTION POST IN PRAIRIE MADE MOUND & ?
 - 2640.00 LEAVE PRAIRIE
 - 5280.00 SET POST CORNER SECTIONS 35 & 36 BUR OAK 10 N74W 27.06'; BURR OAK 10 N17E 31.68' LAND ROLLING SECOND RATE DRY PRAIRIE GRASS
- 1833 BRINK SEP 11 EAST BOUNDARY T3N R9E NORTH ON EAST SIDE SEC 12
- 528.00 WESTERN POINT OF A SAND STONE LEDGE
 - 990.00 DESCENT TO CREEK BOTTOMS
 - 1716.00 RAPID STREAM 16.5' CROSS WEST
 - 2508.00 LEAVE BOTTOM LAND
 - 2640.00 SET 1/4 SECTION POST BURR OAK 16 S41W 66.00' BUR OAK 16 N42W 45.54'
 - 3468.96 W. OAK 14
 - 5280.00 SET POST CORNER SECTIONS 1 & 12 W OAK 14 S26W 21.78' W. OAK 15 N1W 40.92' LAND ROLLING, SECOND RATE BLACK & BURR OAK, & ?/
- 1833 BRINK SEP 11 NORTH ON EAST SIDE SECTION 1
- 2640.00 ENTER PRAIRIE
 - 1676.40 A SMALL SPRING RUNNING EAST
 - 2640.00 SET 1/4 SECTION POST IN PRAIRIE AND MADE A MOUND & C?
 - 5280.00 INTERSECTED SOUTH BOUNDARY OF T4 AS RUN OUT FROM SUGAR CREEK. SET POST FOR CORNER TO TOWNSHIPS 3 & 4 NORTH, RANGE 9 EAST IN PRAIRIE AND MADE A MOUND, & C? LAND ROLLING SECOND RATE PRAIRIE HAZEL GRASS & ? LAND ROLLING SECOND RATE PRAIRIE HALE GRASS, & C. SEPTEMBER 11TH 1833
- 1833 BRINK (SEP 12) WEST ON SOUTH SIDE OF SECTION 31 T4N R10E
- 249.48 W OAK 14
 - 2640.00 SET QUARTER POST BURR OAK 7 N43E 55.44'; BURR OAK 6 N70W 65.34'
 - 5732.76 INTERSECTED RANGE LINE 924' NORTH OF CORNER TO SECTIONS 1 & 12. SET POST AT INTERSECTION FOR CORNER TO T3 & 4N R10E. W. OAK 16 N61E 15.18', W. OAK 18 S8E 75.9' LAND ROLLING SECOND RATE BURR OAK W. OAK HICKORY & HAZLE ????? SEP 12TH 1833
- 1833 HARRISON (DEC 9) SE COR SEC 1 T3N R9E EAST ON RAND. BET 1 & 12
- 1848.00 LEAVE TIMBER & ENTER MARSH
 - 2574.00 LEAVE MARSH & ENTER TIMBER
 - 2640.00 TEMPY 1/4 SEC CORNER
 - 5254.92 INT. E. BDY 237.60 NORTH OF P. LAND LEVEL 2ND RATE TIMBER BURR W.O. & RED OAK. ??? GRASS & WEEDS.
WEST COR. BET. SECS 1 & 12
 - 2627.46 QUARTER SEC. CORNER. {BURR O. 16 N20E 26.4' BURR OAK 13 S83E 36.96 BURR O 16, BURR O 13} MARKED
 - 5254.92 SEC COR.

30AL

512000

Ronald Barnes
OCT 11 2011

SHEET 1 OF 3
CORNER CODE X-1(1)

UN614 W1/4CORSEC31

1870 RUGER AUG REMON-83 NORTH ON WEST LINE OF SW 1/4 SEC 31 ON A VAR 7-18 OFFSET WEST 6.93' OFFSET WEST 4.95 COULD FIND NO TRACE OF QUARTER CORNER. CONTINUED LINE ON SAME VARIATION. AT

5246.34 INTERSECTED NORTH BOUNDARY LINE 24.09' EAST OF CORNER FOUND HARD HEAD STONE AT CORNER SET BY SELF IN A PREVIOUS SURVEY COR VAR 7-41 ESTABLISHED QUARTER CORNER AT A POINT IN A TRUE LINE BETWEEN AND EQUI-DISTANT FROM THE NORTH WEST AND SOUTH WEST CORNERS OF SAID SECTION. IT BEING 2623.17 DISTANT FROM EACH.

1890 BLEEDORN VOL 2 PG 440 MON. VAR 5-15 TO E 1/4 COR SEC 31. USED TO SUBDIVIDE SEC 31

1966 BATTERMAN VOL 4 PG 266 FD CUT STONE & REF SAME.

1978 BARNES VOL 5 PG 407 SET 10" ALUM OVER CUT STONE.

1978 TALARCZK #5240 NE COR SEC 1 T3N R9E CAST ALUM. MON. CORNER SET BY PROPORTIONATE MEASUREMENT & EXISTING PHYSICAL EVIDENCE USGS MON. ELEV 1985 ADJ 1903 SW 46.24 FROM ALUM. MON IS 2' WEST OF PVMT CENTER & ON LINE WITH PVMT CENTER TO THE WEST (TOWNLINE RD)

1980 COMBS GSM VOL10 PG 123 ALUM. MON EAST 611.01

1981 COMBS #12964 FD ALUM. MON. WEST FROM ALUM MON @ E1/4 SEC 31. E 1/4 COR SEC 31 TO SE COR SEC 31 IS SO -08-50W 2647.26'

1986 COMBS GSM VOL 12 PG 395 ALUM MON 3028.50 TO CENTER OF SEC 31. USED ALUM @ E 1/4 COR SEC 31 FOR LINE

1996 BARNES X-01 I DID NOT PERFORM THIS SURVEY. I AM ONLY PLACING ON RECORD THE DATA. DID NOT ACCEPT NOR REJECT THE PROVIDED DATA. PK @ NE COR SEC 1 T3 9E. ELEV 985.926, 301,091.116 N/S; 400,275.428 E/W NAD83 VERT DATUM NAD29, LAT 42-46-12.777829 LONG 89-22-08.828543. ELLIPS HT. 875.8934 GPS.

2004 COMBS GSM VO 28 PG 7 ALUM. EAST 3028.50 TO R/R SPIKE @ CENTER OF SEC 31.

2009 KARNES #16230 ROCK COUNTY SEC COR. N89-45-07E TO E 1/4 COR SEC 31

FD ALUM MON 0.4' DEEP.

C) Was the corner restored through acceptance of (1) an obliterated evidence location, or, (2) a found perpetuated location?

ACCEPTED FD ALUM WHICH IS ON THE CUT LIMESTONE.

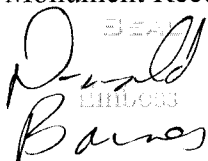
D) Describe any material discrepancy between the location of the corner as restored or reestablished and the location of that corner as previously restored or reestablished by distance and direction. Show the discrepancy on the plan view drawing under (a), above. Show the distances between the corner as previously restored or reestablished and (1) the corner as restored or reestablished, and (2) to at least 4 of the witness monuments shown on the drawing in (a), above.

NONE

(E) Was the corner reestablished through lost corner proportionate methods? If so, show the method, including the directions and distances to other public land survey corners used as evidence or used for proportioning the corner location.

RUGER PLACED CUT LIMESTONE ON LINE AND EQUAL DISTANCE BETWEEN THE NW & SW CORNERS OF SEC 31.

I, **Donald Barnes**, hereby certify that the corner location as identified by the corner code index was determined by me under my direction and control and that this U.S. Public Land Survey Monument Record is correct and complete to the best of my knowledge and belief.

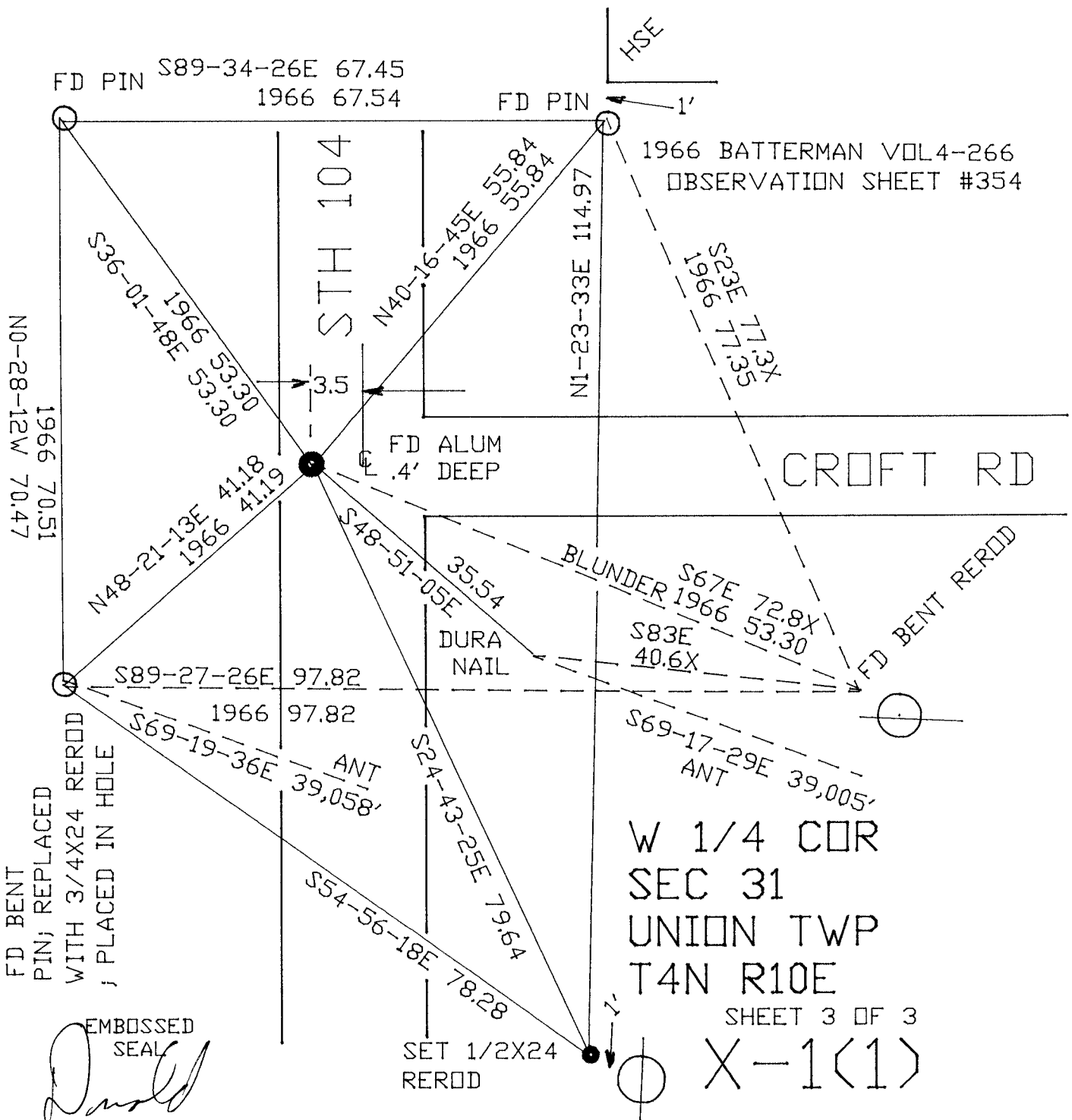

DONALD BARNES

SHEET 2 OF 3

CORNER CODE X-1(1)

OCT 11 2011

A.E. 7.08 REQUIREMENT



W 1/4 COR
 SEC 31
 UNION TWP
 T4N R10E

SHEET 3 OF 3

X-1(1)

EMBOSSSED SEAL

Donald Barnes
 OCT 11 2011

1966 70.51
 NO-28-12W 70.47