

Paper weight-110# (minimum)

Black nonfading ink required

U.S. PUBLIC LAND SURVEY MONUMENT RECORD

For Public Land Survey Corners In:

WI ADMINISTRATIVE CODE A-E 7.08 REQUIREMENT

T. 4 N. R. 10 E. 4th P.M.

REV 10/23/2004

USMONREC.DWG

CORNER CODE INDEX

A	2	3	4	5	6	7	8	9	10	11	12	13	14	15	16	17	18	19	20	21	22	23	24	25	A
B																									B
C	6																								C
D																									D
E																									E
F																									F
G	7																								G
H																									H
J																									J
K	18																								K
L																									L
M																									M
N																									N
O																									O
P	19																								P
Q																									Q
R																									R
S																									S
T	30																								T
U																									U
V																									V
W																									W
X	31																								X
Y																									Y
Z																									Z

UNION TWP
ROCK COUNTY WI

IF AVAILABLE
ROCK COUNTY COORDINATES PREFERRED

North _____ Elev. _____

East _____

Hor. Datum _____ Vert. Datum _____

LATITUDE _____ ELLIPS. HT. _____

LONGITUDE _____

NAD83(91) _____ NETWORK ADJ. YR _____

GPS (X) _____ TRAVERSE (X) _____

BASED ON THE FOLLOWING CONTROL:

◆ CORNER MONUMENT ○ WITNESS MONUMENT

BEARINGS ARE BASED ON: _____

FIELD BOOK _____ PAGE # _____

SHEET 1 OF 5

SHOW A PLAN VIEW DRAWING DEPICTING THE CORNER MONUMENT AND SURROUNDING PHYSICAL FEATURES, INCLUDING THE EXCAVATION AREA AND DEPTH.

PLANNING & ZONING COMMITTEE ADOPTED THIS FORM ON 12/2/1982

CORNER CODE E-17(1)

UN529 SECORSEC3

(B) Describe any record evidence, monument evidence, occupational evidence, testimonial evidence or any other material evidence you considered, and whether the monument was found or placed.

- 1833 HARRISON NORTH BET. 10 & 11**
- 1155 LEAVE PRAIRIE & ENTER TIMBER**
 - 2640 QUARTER SEC COR. IN SOUTHE**
EDGE OF SW CORNER OF PRAIRIE {BURR O.
24 N74W 38.94'; BURR O 18 S40E 82.5'
BURR O. 24 & BURR O 18} MARKED
 - 4290 ENTER TIMBER**
 - 5280 COR TO SECS 2,3,10,11 {BURR O. 24 N20E**
38.94', BURR O S50E 18.48', BURR O 20
S45W 82.5', BURR O. 20 N55W 27.72'
LAND LEVEL 2ND RATE WITH BURR O
TIMBER PRAIRIE LEVEL 1ST RATE.
TOWN 4 & RANGE 10 E 4TH MER. NOV 7, 1833
EAST ON RAND BET 2 & 11
 - 2640 TEMPY 1/4 SEC**
 - 5227.20 INT. @ BDY 9.9' N OF P. LAND LEVEL 2ND**
RATE- TEMBER ALL BURR O. ??? ?? OF
WEEDS
WEST COR WEST BET SEC 2 & 11
 - 2617.56 QUARTER SEC COR {BURR O 18 S37E**
91.74', BURR O. 18 N64W 48.84' BURR O
18, BURR O 18
EAST ON RAND. BET. SECS 3 & 10
 - 2640.00 TEMPY 1/4 SEC COR**
 - 5237.76 INT. E BDY 13.2' N OF P. LAND LEVEL 2ND**
RATE TIMBER RED BURR & W.O. MOSTLY
LEVEL GRASS & WEEDS.
WEST COR. BET. SEC 3 & 10
 - 2618.88 QUARTER SEC COR. {BURR O. 10 S3W 42.9',**
BURR DAK 10 N 26W 28.38' BURR O 10
BURR O 10} MARKED.
NORTH BETWEEN SECS 2 & 3
 - 2123.88 ENTER MARSH**
 - 2376 ENTER MARSH**
 - 2640 QUARTER SEC COR. {WO 18 S24E 16.5'. NO**
OTHER NEAR WO 18 ???} MARKED
 - 3960 LEAVE MARSH CRR NE EXT. 2640 & 1320**
S.W.
 - 5175.06 INT. N. BDY 16.5' E OF POST. {BURR O.**
S24E 21.78', BURR O 12 S77W 15.84'
- 1870 RUGER REMON FIELD NOTES (SEPTEMBER) PG 110 WEST ON**
NORTH LINE OF NE 1/4 SEC 11 ON A VAR 7-47 AT
- 2601.06' INTERSECTED QUARTER LINE AT QUARTER**
CORNER. FOUND OLD STAKE AT CORNER
ALSO FOUND NORTH BEARING TREE AND
STUMP OF SOUTH BEARING TREE.
WEST ON NORTH LINE OF NW 1/4 SEC 11 ON A
VAR 7-30 AT
 - 2629.77 INTERSECTED WEST BOUNDARY LINE AT**
CORNER. FOUND OLD STAKE AND PIECES
OF IRON AT COR. ALSO FD STUMPS OF
BOTH BEARING TREES.
NORTH ON WEST LINE OF SW 1/4 SEC 2 ON A VAR
6-35; OFFSET WEST 26.4' AT
 - 2642.64 INTERSECTED QUARTER LINE 13.86' WEST**
OF QUARTER CORNER. COR VAR 6-51
PG 111 SOUTH ON WEST LINE OF NW 1/4 SEC 11
ON A VAR 7-00 AT
 - 2661.45 INTERSECTED QUARTER LINE 2.97' EAST OF**
QUARTER CORNER. FOUND OLD STAKE AT
CORNER. ALSO FOUND STUMPS OF BOTH
BEARING TREES. COR VAR 6-56

Dodd Barnes

8-10-2009

UN529 SECORSEC3

PG 112 WEST ON NORTH LINE OF NE 1/4 SEC 10
ON A VAR 7-10, AT
2648.25' INTERSECTED QUARTER LINE 13.86' SOUTH
OF QUARTER CORNER FOUND STUMPS OF
BOTH BEARING TREES AND ESTABLISHED
CORNER FROM THEM. COR VAR 6-52.
SEPTEMBER 5, 1870

PG 111 WEST ON NORTH LINE OF NW 1/4 SEC 10
ON A VAR 7-15; OFFSET NORTH 1.32' AT
2636.04 INTERSECTED WEST BOUNDARY LINE 18.48'
SOUTH OF CORNER. FOUND OLD STAKE AT
CORNER ALSO FOUND STUMP OF SOUTH
BEARING TREE. COR VAR 6-49

PG 111 SOUTH ON WEST LINE OF NW 1/4 SEC 11
ON VAR 7-00; AT
2661.45 INTERSECTED QUARTER LINE 2.97' EAST OF
QUARTER CORNER. FOUND OLD STAKE AT
CORNER. ALSO FOUND STUMPS OF BOTH
BEARING TREES. COR VAR 6-56

- 1884 RUGER VOL 2 PG 387 FD STONE @ SW, S 1/4, & W 1/4 COR
SEC 2. 2629.77 TO S 1/4 COR SEC 2 & 2642.64 TO W 1/4
COR SEC 2.
- 1972 BATTERMAN VOL 4 PG 524 SETS TIES BUT STATES NOTHING
ABOUT MON. BK163/73 10-25-72 [VERIFIED WITH FIELD
NOTES}
- 1975 WILHELM VOL 5 PG 161 & 162 MAP #7007 & 7008 N89-27-
57W 2641.91 TO S 1/4 COR SEC 3, N89-27-57W 5283.82 TO
SW COR SEC 3, NO-20-00E 2668.74 TO FD 1 1/4 PIPE @ W
1/4 COR SEC 2. FROM W 1/4 COR SEC 2 TO NW COR SEC 2
IS NO-08-06W 2677.92.
- 2000 COMBS CSM VOL 24 PG 204 SET PK FROM TIES IN VOL 4 PG
524. 2651.08 TO S 1/4 COR SEC 3
- 20?? COMBS E-17 USED SW & NW REFERENCE MONUMENTS FROM
VOL 4 PG 524 TO SET PK. VOL 5 PG 161 KERMIT WILHELM
SETS 1" PIPE. APPEARS THAT HE ESTABLISHED THIS
LOCATION BY EXTENDING STRAIGHT LINE FROM SE COR SEC
2 THRU S 1/4 COR SEC 2. FD VOL 4 PG 524 REFERENCE
MONUMENTS.
- 2008 LATHROP #16081 OUT FOR MICROFILMING
- 2008 LATHROP CSM VOL 32 PG 237 FD PK S89-47-50W 2632.81
TO FD PK @ NW COR SEC 11 & S0-03-43E 5355.05 TO CUT
L.S. @ S 1/4 COR SEC 11.

PRIOR TO RESURFACING I SEARCHED & FD A MAG NAIL &
WILHELM'S SET PIPE.

C) Was the corner restored through acceptance of (1) an obliterated evidence location, or, (2) a found
perpetuated location?

FIELD NOTES & VOL 4 PG 524 DOESN'T STATE IF HE FOUND THE CUT
LIMESTONE OR ESTABLISHED THE CORNER. PRIOR TO RESURFACING
I FOUND THE LOCATION OF THE OLD EXCAVATION PATCH & A MAG
NAIL. THE REFERENCE TIES INDICATES THE CUT STONE MAY HAVE
BEEN FOUND. THE MAG NAIL DOES NOT ACCURATELY FIT WITH ANY
TWO REFERENCE MONUMENTS. SHOULD DIG FOR CUT LIMESTONE.

DID NOT ACCEPT NOR REJECT THE FOUND MAG NAIL. THE UNION
TOWNSHIP PROJECT SHOULD BE USED TO REEVALUATE THE
LOCATION.

SHEET OF 5

Donald Barnes
8-10-2009

E-17(1)

UN529 SECORSEC3

D) Describe any material discrepancy between the location of the corner as restored or reestablished and the location of that corner as previously restored or reestablished by distance and direction. Show the discrepancy on the plan view drawing under (a), above. Show the distances between the corner as previously restored or reestablished and (1) the corner as restored or reestablished, and (2) to at least 4 of the witness monuments shown on the drawing in (a), above.

WILHELM'S PIPE IS S9-37-14W 21.16 FROM THE MAG NAIL. THE MAG NAIL IS 3' SOUTH OF THE NORTH PVMT EDGE & THE FD PIPE IS 3' SOUTH OF THE SOUTH PVMT EDGE.

(E) Was the corner reestablished through lost corner proportionate methods? If so, show the method, including the directions and distances to other public land survey corners used as evidence or used for proportioning the corner location.

I, DONALD BARNES, hereby certify that the corner location as identified by the corner code index was determined by me under my direction and control and that this U.S. Public Land Survey Monument Record is correct and complete to the best of my knowledge and belief.

Donald Barnes

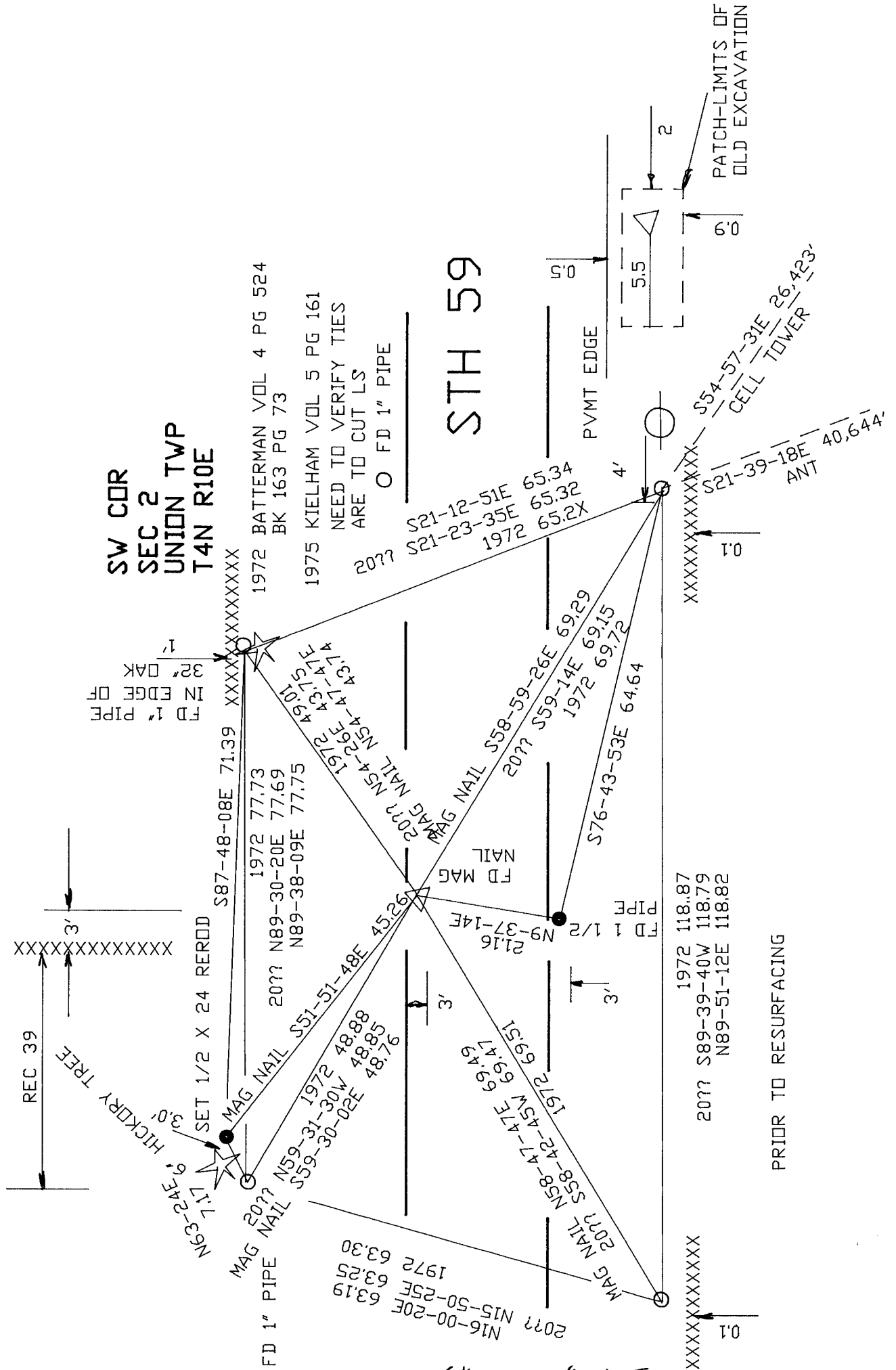
Seal

8-10-2009

Emboss

SHEET 3 OF 5

CORNER CODE **E-17(1)**
A.E. 7.08 REQUIREMENT



SW CDR
 SEC 2
 UNION TWP
 T4N R10E

1972 BATTERMAN VOL 4 PG 524
 BK 163 PG 73

1975 KIELHAM VOL 5 PG 161
 NEED TO VERIFY TIES
 ARE TO CUT LS

○ FD 1" PIPE

STH 59

PATCH-LIMITS OF
 OLD EXCAVATION

PRIOR TO RESURFACING

EMBOSSED
 SEAL

*Paul
 Jones*

8-08-2009

SHEET 4 of 5
 E-17(1)

Donald Barnes

8/08/2009

1

UNION TWP
SEC 2

SEC 11

SEC 3

SEC 10

1833 DRIG 2535.06
1870 RUGER VAR7-14 2566.74
1975 NO-08-06W 2677.92

1833 DRIG 2640
1870 RUGER VAR6-51 2642.64
1884 RUGER 2642.64
1975 NO-20-00E 2668.74

1833 DRIG 2618.88
1870 RUGER VAR6-49 2636.04
1975 N89-27-57W 2641.91

1833 DRIG 2618.88
1870 RUGER VAR6-52 2648.25
1975 N89-27-57W 2641.91
2000 COMBS 2651.08

1833 DRIG 2617.56
1870 RUGER VAR7-30 2629.77
1884 RUGER 2629.77
2008 S89-47-50W 2632.81

1833 DRIG 2617.56
1870 RUGER VAR7-47 2601.06

1833 DRIG 2640
1870 RUGER VAR 6-56 2661.45

SO-03-43E 5355.05

SHEET 5 of 5

E-17(1)