

Paper weight-110# (minimum)

Black nonfading ink required

U.S. PUBLIC LAND SURVEY MONUMENT RECORD

For Public Land Survey Corners In:

WI ADMINISTRATIVE CODE A-E 7.08 REQUIREMENT

T. 4 N. R. 10 E. 4th P.M.

REV 10/23/2004

USMONREC.DWG

CORNER CODE INDEX

UNION TWP

ROCK COUNTY WI

IF AVAILABLE

ROCK COUNTY COORDINATES PREFERRED

A	1	2	3	4	5	6	7	8	9	10	11	12	13	14	15	16	17	18	19	20	21	22	23	24	25	A
B		6					5				4				3			2			1					B
C																										C
D																										D
E																										E
F																										F
G																										G
H																										H
J																										J
K																										K
L																										L
M																										M
N																										N
O																										O
P																										P
Q																										Q
R																										R
S																										S
T																										T
U																										U
V																										V
W																										W
X																										X
Y																										Y
Z																										Z

North _____ Elev. _____

East _____

Hor. Datum _____ Vert. Datum _____

LATITUDE _____ ELLIPS. HT. _____

LONGITUDE _____

NAD83(91) _____ NETWORK ADJ. YR 2010 _____

GPS (X) _____ TRAVERSE (X) X

BASED ON THE FOLLOWING CONTROL:

◆ CORNER MONUMENT

○ WITNESS MONUMENT

(a)

BEARINGS ARE BASED ON: --- ROCK COUNTY PROJECTION ---

FIELD BOOK _____ PAGE # _____

OR OBSERVATION SHEET _____

SHEET 1 OF 4

SHOW A PLAN VIEW DRAWING DEPICTING THE CORNER MONUMENT AND SURROUNDING PHYSICAL FEATURES, INCLUDING THE EXCAVATION AREA AND DEPTH.

PLANNING & ZONING COMMITTEE ADOPTED THIS FORM ON 12/2/1982

CORNER CODE E-1(1)

UN521

NWCORSEC7

(B) Describe any record evidence, monument evidence, occupational evidence, testimonial evidence or any other material evidence you considered, and whether the monument was found or placed.

1833 BRINK PG 44 EAST BOUNDARY T4N R9E NORTH ON EAST SIDE OF SECTION 13

2640.00 SET 1/4 SECTION POST IN PRAIRIE MADE A MOUND

2937.00 ROAD FROM MINERAL POINT TO KOSCONONG E&W

4620.00 LEAVE PRAIRIE

5280.00 SET POST FOR CORNER TO SECTIONS 12 & 13 BUR OAK 24 S17E 80.52'; BUR OAK 12 N43E 89.76' LAND ROLLING RICH DRY PRAIRIE. NORTH OF PRAIRIE THINLY TIMBERED WITH BURR OAK NEEDLE ATTRACTED 1-40 WEST

1833 BRINK (SEP 15TH) PG 46 EAST BOUNDARY T4N R9E NORTH ON EAST SIDE OF SECTION 12

1204.50 BUR OAK 18

2112.00 ENTER MARSH NE

2640.00 SET 1/4 SECTION POST BUR OAK 12 S1 1/2E 570.24' NO OTHER

4884 LEAVE MARSH

5280.00 SET POST FOR CORNER TO SECTIONS 1 & 12 BUR OAK 16 N6W; BUR OAK 16 S28W 116.16' FIRST 1/2 LAND ROLLING SECOND RATE BUR OAK, HAZEL, RED ROOT & C. MARSH WET ? WILLOW SEP 15TH 1833

1833 HARRISON T4N R9E EAST ON RANDOM BET. SECS 12 & 13 T4NR9E

2640.00 TEMPY 1/4 SEC COR

5243.70 INT. E BDY 138.6' N OF P. LAND ROLLING 2ND RATE TIMBER RED O & BURR. UNDERGROWTH HAZLE GRUBS GRASS & WEEDS.

WEST CORD WEST BET 12N & 13

2621.85 1/4 SEC COR RED O 18 S61E 26.4'; RED O. 12 S25E 31.68'; RED O 18 & RED O 12} MARKED

5243.70 INTD SEC COR. NOV 12TH

1833 HARRISON (NOV 10TH) T4N T10E 4TH MER WEST BETWEEN SECS 6 & 7

990.0 MARSH

1650.0 LEFT ????

1828.20 WD 12

2640.00 QUARTER SEC COR {WD 12 S32E 27.72'; WD 18 N79W 21.78' WD 12 & WD 18} MARKED

5342.70 INT RANGE LINE OF RANGE 9E SET COR TO SEC S 6 & 7 {BURR O 12 N34E 27.72'; BURR O S23E 31.02' LAND ROLLING 2ND RATE WITH WD & BURR O TIMBER GROWTH HAZEL, GRASS, & WEEDS NOV 11TH 1833

1853 CHURCH VOL 1 PG 83 STATES NOTHING ABOUT MON.

2640.00 TO W 1/4 COR SEC 6 & 1382.7 TO S 1/16TH COR OF SW 1/4 SEC 6.

1870 RUGER VOL 2 PG 50 VAR 7-18 VAR 7-18 2722.28 & VAR 4-55

2629.44 TO STONE MON SET BY SELF @ W 1/4 COR SEC 7. STONE MONSET BY SELF

1870 RUGER AUG REMON-124 EAST ON SOUTH LINE OF SW 1/4 SEC 6 ON A VAR 7-27; OFFSET NORTH 18.48' AT

2720.52 INTERSECTED QUARTER LINE 36.30' NORTH OF QUARTER CORNER. FOUND OLD STAKE AT CORNER. COR VAR 7-04

EAST ON SOUTH LINE OF SE 1/4 SEC 6 ON A VAR 7-10; AT

2648.58 INTERSECTED EAST BOUNDARY LINE AT CORNER. EDWARD RUGER COUNTY SURVEYOR

SEAL

Ronald Baines
Emboss

SHEET 1 OF 4

CORNER CODE E-1(1)

Aug 17, 2011

UN521 NWCORSEC7

- 1870 RUGER AUG REMON-122 NORTH ON WEST LINE OF SW
1/4 SEC 7 ON A VAR 5-05; AT
2640.00 INTERSECTED QUARTER LINE AT QUARTER
CORNER. FOUND STONE AT CORNER AND OLD
STAKE UNDER STONE.
NORTH ON WEST LINE OF NW 1/4 SEC 7 ON A
VAR 4-55; AT
2630.76 INTERSECTED NORTH BOUNDARY LINE AT
CORNER FOUND STONE AT CORNER AND OLD
STAKE UNDER STONE. ALSO FOUND STUMPS OF
BEARING TREES.
- 1870 RUGER AUG REMON-124 SOUTH ON WEST LINE OF NW
1/4 SEC 6 ON A VAR 5-05; AT
2636.04 INTERSECTED QUARTER LINE 5.28' WEST OF
QUARTER CORNER. FOUND OLD STAKE AT
CORNER. COR VAR 5-12
SOUTH ON WEST LINE OF SW 1/4 SEC 6 ON A
VAR 4-55; AT
2660.46 INTERSECTED SOUTH BOUNDARY LINE AT
CORNER.
- 1912 KERCH VOL 3 PG 70 MON. 2730.14 TO MON @ N 1/4 COR
SEC 7.
- 1977 BARNES VOL 5 PG 369 STATES NOTHING ABOUT MON.
2667.14 TO W 1/4 COR SEC 6, 2637.37 TO W 1/4 COR SEC 7,
900.85 TO SE COR SEC 12 T4N R9E WHICH IS SOUTH OF SW
COR SEC 6, ANGLE OF 179-43-58 @ SW COR SEC 6 FROM
THE E 1/4 COR SEC 12 TO THE SE COR SEC 12, & THE SW
COR SEC 6 IS 0.53 EAST OF A LINE FROM THE SE COR SEC
12 TO THE W 1/4 COR SEC 6
- 1977 BARNES VOL 5 PG 370 REFERENCED SAME. 0.5' WEST OF
EAST PVMT EDGE & 8' NORTH OF E/W FENCE LINE ON EAST
SIDE OF RD. NOT IN EXCAVATION PATCH. ALUM. MON. SET
ON LINE WITH SE COR SEC 12 & E 1/4 COR SEC 12 GREEN
CO. AT SINGLE PROPORTIONATE DISTANCE. WHILE
EXCAVATING FOR OTHER SEC. CORNERS AN OLD ASPHALT
RD WAS USUALLY FD BELOW THE EXISTING SURFACE. THE
TERRAIN & THE FACT THAT THE OLD ASPHALT WAS NOT FD
INDICATES THAT THE CORNER WAS PROBABLY DESTROYED
DURING THE ROAD CONSTRUCTION BY GREEN CO. FIVE
YEARS AGO. EXCAVATION HOLE IS 9'X6' HOLE @ CENTER OF
PVMT & ON LINE WITH E/W FENCE.
- 1977 TALARCZYK #5091 @ SE COR SEC 12 T4N R9E CAST ALUM
MON & REFERENCED COR. CORNER SET IN PLACE OF
STONE FOUND. @ AMIDON RD & CTH T
- 1978 BARNES VOL 5 PG 398 FD PK AS PREVIOUSLY SET. SET
ALUM. MON.
- 1982 BARNES VOL 6 PG 273 FD ALUM. MON. SET R/R 8.06' WEST
OF ALUM. EASTERLY 698.37 TO FD IP 2730.14 TO CUT
LIMESTONE @ N 1/4 COR SEC 7. R/R IS 2.5' EAST OF CENTER
OF PVMT. COMBS S2-10-DW 2637.42 TO ALUM W 1/4 COR
SEC 7.
- 1982 BARNES VOL 6 PG 274 RUGER STATED HE FOUND THE
STAKE & BEARING TREE STUMPS, SO I AM USING HIS
LOCATION AS THE ORIGINAL CORNER. THE PRORATION OF
RUGER & KERCH'S RECORD MEASUREMENTS ARE IN
HARMONY. THE TRUE POSITION OF THE CUT LIMESTONE
APPEARS TO BE WEST OF THE CORNER I ESTABLISHED ON THE
TOWNLINE. THEREFORE I AM ESTABLISHING AN AMENDED
MONUMENT. A DETAIL EXPLANATION IS IN THE "MANUAL OF
SURVEYING INSTRUCTIONS 1973" 5-41 (PAGE 140). GREEN

Donald Barnes

Emboss

Aug 17, 2011

SHEET 2 OF 4
CORNER CODE E-1(1)

UN521 NWCORSEC7

COUNTY'S TIE SHEETS STATES A STONE WAS FOUND AT THE E 1/4 COR SEC 13 T4N R9E AND AT THE NE COR OF SEC 13. THE W 1/4 COR OF SEC 7 IS BETWEEN THOSE CORNERS. GREEN COUNTY DID NOT FIND ANYTHING AT THE E 1/4 COR OF SEC 12, WHICH IS THE NEXT STANDARD CORNER NORTH OF THE NW CORNER OF SEC 7. IF THE E 1/4 COR OF SEC 12 WAS REJECTED, A STRAIGHT LINE BETWEEN THE W 1/4 COR OF SEC 6 AND THE SE COR OF SEC 12 WOULD PLACE THE NW COR OF SEC 7 ONLY 0.53 WEST OF IT'S PRESENT LOCATION. FD ALUM. 0.7 SOUTH OF THE LINE BETWEEN THE AMENDED MONUMENT & THE N 1/4 COR SEC 7. THE AMENDED MON A R/R SPIKE IS NORTHWESTERLY 8.06 FROM THE FD ALUM. MON. THE R/R SPIKE IS 2.5 EAST OF THE N/S PVMT CENTER. SHOWS RECORD DISTANCES. 2729.12 FROM AMENDED COR TO N 1/4 COR SEC 7. 2721.06 FROM ALUM MON. TO CUT LS @ N 1/4 COR SEC 7. THE DISTANCE BETWEEN THE EASTERLY FD IP & THE AMENDED COR IS 698.11. KERCH'S RECORD DISTANCE IS 698.37

2004 CARROLL CSM VOL 28 PG 22 ALUM. MON. 2637.12 TO ALUM @ W 1/4 COR SEC 7

2005 CARROLL E-1 MON. FD IN PLACE INDICATED BY PLAT AND RECORD OF DONALD BARNES DATED NOV 14, 1977 EXCEPT FOR 2 MISSING WITNESS MONUMENTS. TWO NEW WITNESS MONUMENTS WERE SET AS INDICATED. COR IS 0.5 WEST OF EAST PVMT EDGE & NORTH OF E/W FENCE ON EAST SIDE OF RD.

FD ALUM. 0.2' DEEP

C) Was the corner restored through acceptance of (1) an obliterated evidence location, or, (2) a found perpetuated location?

ACCEPTED FD ALUM

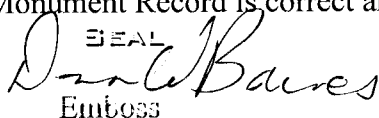
D) Describe any material discrepancy between the location of the corner as restored or reestablished and the location of that corner as previously restored or reestablished by distance and direction. Show the discrepancy on the plan view drawing under (a), above. Show the distances between the corner as previously restored or reestablished and (1) the corner as restored or reestablished, and (2) to at least 4 of the witness monuments shown on the drawing in (a), above.

NONE

(E) Was the corner reestablished through lost corner proportionate methods? If so, show the method, including the directions and distances to other public land survey corners used as evidence or used for proportioning the corner location.

NO

I, **Donald Barnes**, hereby certify that the corner location as identified by the corner code index was determined by me under my direction and control and that this U.S. Public Land Survey Monument Record is correct and complete to the best of my knowledge and belief.


Emboss

SHEET 3 OF 4

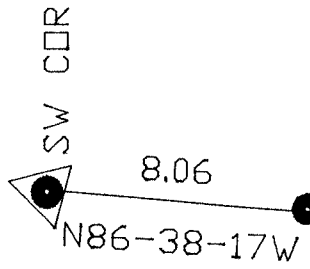
Aug 17, 2011

CORNER CODE E-1(1)

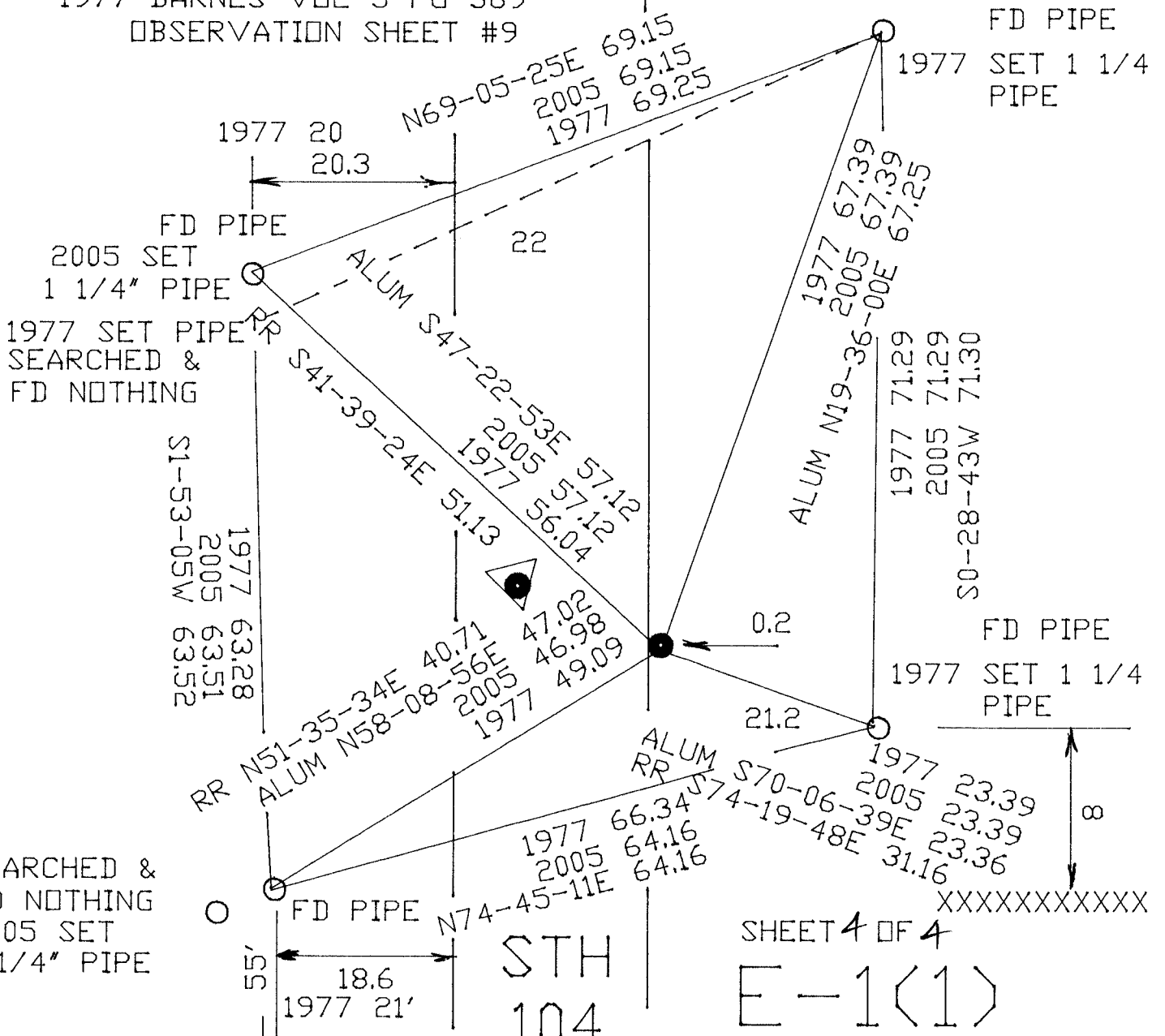
A.E. 7.08 REQUIREMENT

SW COR
SEC 6
UNION TWP

1977 CARROLL E-1
1977 BARNES VOL 5 PG 369
OBSERVATION SHEET #9



● ALUM IS AMENDED COR
▲ REC R/R SW COR



SHEET 4 OF 4
E-1(1)

Daniel Barnes
Aug 17 2011