

Paper weight-110# (minimum)

Black nonfading ink required

U.S. PUBLIC LAND SURVEY MONUMENT RECORD

For Public Land Survey Corners In:
T. 4 N. R. 10 E. 4th P.M.
CORNER CODE INDEX

WI ADMINISTRATIVE CODE A-E 7.08 REQUIREMENT
REV 10/23/2004 USMONREC.DWG

UNION TWP
ROCK COUNTY WI

IF AVAILABLE
ROCK COUNTY COORDINATES PREFERRED

A	1	2	3	4	5	6	7	8	9	10	11	12	13	14	15	16	17	18	19	20	21	22	23	24	25	A
B		6				5					4				3					2					1	B
C																										C
D																										D
E																										E
F																										F
G																										G
H																										H
J																										J
K																										K
L																										L
M																										M
N																										N
O																										O
P																										P
Q																										Q
R																										R
S																										S
T																										T
U																										U
V																										V
W																										W
X																										X
Y																										Y
Z																										Z

North _____ Elev. _____

East _____

Hor. Datum _____ Vert. Datum _____

LATITUDE _____ ELLIPS. HT. _____

LONGITUDE _____

NAD83(91) _____ NETWORK ADJ. YR 2010

GPS (X) _____ TRAVERSE (X) X

BASED ON THE FOLLOWING CONTROL:

◆ CORNER MONUMENT

○ WITNESS MONUMENT

BEARINGS ARE BASED ON: ROCK COUNTY PROJECTION

FIELD BOOK _____ PAGE # _____
OR OBSERVATION SHEET _____

SHEET 1 OF 3

SHOW A PLAN VIEW DRAWING DEPICTING THE CORNER MONUMENT AND SURROUNDING PHYSICAL FEATURES, INCLUDING THE EXCAVATION AREA AND DEPTH.

PLANNING & ZONING COMMITTEE ADOPTED THIS FORM ON 12/2/1982

CORNER CODE C-13(1)

UN517 W1/4CORSEC3

(B) Describe any record evidence, monument evidence, occupational evidence, testimonial evidence or any other material evidence you considered, and whether the monument was found or placed.

- 1833 HARRISON T4N R10E NORTH BETWEEN SECTIONS 3 & 4
1954.26 BURR O 10
2640.00 QUARTER SEC COR. {BURR O 12 S56W 19.8';
BURR O 12 S27E 30.36' BURR O 12 & BURR O
12} MARKED
2904.0 SMALL POND - OFFSET E 264.0'; N 726'; W
264.0'
3729.66 WO 20
5155.92 INT. N. BDY 17.82' WEST OF P. {BURR O 12
S34E 1.32'; BURR O 18 S34W 48.18' LAND & C
SAME
- 1870 RUGER AUG REMON-113
NORTH ON WEST LINE OF SW 1/4 SEC 3 ON A
VAR 6-55; OFFSET WEST 5.94'; OFFSET EAST
14.85' AT
2657.82 INTERSECTED QUARTER CORNER 11.88' EAST OF
QUARTER CORNER. FOUND REMAINS OF OLD
STAKE AT CORNER ALSO FD STUMPS OF BOTH
BEARING TREES. COR VAR 6-59
NORTH ON WEST LINE OF NW
1/4 SEC 3 ON A VAR 7-10; OFFSET EAST TO
AVOID POND. 297.99' OFFSET WEST 305.58' AT
2525.16 INTERSECTED NORTH BOUNDARY LINE 8.58'
WEST OF CORNER FOUND REMAINS OF OLD STAKE
AT CORNER. ALSO FOUND STUMP OF SW
BEARING TREE AND REMAINS OF STUMP OF SE
BEARING TREE. COR VAR 7-08
- 1961 BATTERMAN VOL 4 PG 97 FD BROKEN CUT STONE MON. WITH
THE BOTTEM IN TACT) REFERENCED SAME.
- 1970 COMBS CSM VOL 1 PG FD 1" PIPE IN MON BOX
- 1971 COMBS CSM VOL 2 PG 89 351 SET 1" PIPE OVER CUT
STONE, SOUTH 33.00 TO PIPE @ LOT COR., & EAST 1320.17
TO PIPE @ RD INTERSECTION.
- 1971 LEE VOL 4 PG 524 MON. BOX
- 1975 WILHELM VOL 5 PG 162 FD 1" IP INSIDE A 10" SQ. STEEL
BOX. SO-02-37W 2662.76 TO STONE @ SW COR SEC 3
- 1975 WILHELM . #7006 & #7007 FD A 1" IP INSIDE A 10" SQ
STEEL BOX. SO-02-37E 2662.76 TO STONE @ SW COR SEC
3.
- 1978 LEE #5073 FD 1" IRON PIPE. S89-28-19W 2674.82 TO
CENTER OF SEC 4 & S89-28-19W 5333.08 TO FD 1" PIPE @ W
1/4 COR SEC 4.
- 1980 FED #5075 FD 1" PIPE ON LINE WITH N/S FENCE LINE & 2.5
NORTH OF GEN PVMT. N89-32-26E 2674.53 TO 1/2 REBAR @
GEN SEC 4, S89-32-26W 5332.90 TO FD PIPE @ W 1/4 COR
SEC 4, & NO-02-43W 2524.74 TO 6X6 LIMESTONE @ NE COR
SEC 4
- 1991 SCHROEDER #2118 STATES NOTHING ABOUT MON. S89-31-
53E 2642.07 TO FD IRON PIPE @ CENTER OF SEC 3.
- 1993 KARNS CSM VOL 17 PG 197 ROCK COUNTY SEC COR @ E 1/4
COR & NE COR SEC 4. FROM E 1/4 COR SEC 4 TO NE COR
SEC 4 IS NO-19-40E 2528.46 & FROM E 1/4 COR SEC 4 WEST
959.10 TO PROP COR.
- 1994 KRIZAN #9516 FD IRON PIPE IN MON. MANHOLE. SO-08-14W
2663.15 TO SQUARE LIMESTONE @ SE COR SEC 4
- 1994 KRIZAN C-13 FD A 1" IRON PIPE IN A MONUMENT MANHOLE
3.5' +/- NORTH OF THE CENTERLINE OF HOLT ROAD ON LINE
WITH A FENCE LINE TO THE SOUTH. REFERENCED SAME.
- 1994 KRIZAN #9516 FD PIPE IN MON. MANHOLE. SO-08-14W
2663.15 TO LS @ SE COR SEC 4.

David Barnes
Surveyor

SHEET 1 OF 3
CORNER CODE C-13(1)

Oct 20, 2011

UN517 W1/4CORSEC3
 1995 KARNs CSM VOL 18 PG 257 ROCK COUNTY SEC COR. NO-19-40E 2528.44 TO ROCK COUNTY SEC COR. @ NE COR SEC 4 & WEST 1885.00 TO IRON STAKE.
 1996 SCHROEDER CSM VOL 19 PG 37 STATES NOTHING
 1996 HOFMEISTER CSM VOL 19 PG 391 STATES NOTHING. WEST 200.00 TO LOT COR.
 2005 KARNs #15094 ROCK COUNTY SEC CORNER FD SO-08-18W TO ROCK COUNTY SEC CORNER @ SE COR SEC 4
 2006 LATHROP CSM VOL 30 PG 307 FD ALUM. WEST 5332.95 TO FD PK @ W 1/4 COR SEC 4
 2007 KARNs CSM VOL 32 PG 38 ROCK COUNTY SEC COR. WEST 1369.85 TO LOT COR.
 2008 LATHROP #15968 & #15967 FD PIPE, SB9-13-14E 1319.49 TO COMPUTED LOCATION FROM REF MONUMENTS @ 1/16TH COR., SO-21-01W 2662.97 TO FD PIN @ SW COR SEC 3
 2009 BTK #16231
 NOT FILED

FD 0.3' DEEP MON BOX COVER, 2.5' NORTH OF CENTER OF PVMT & ON LINE OF N/S FENCE TO THE SOUTH. FD REFERENCE PIPES ON NORTH SIDE OF ROD & REFERENCE RERODS.

C) Was the corner restored through acceptance of (1) an obliterated evidence location, or, (2) a found perpetuated location?

THE INTERSECTION OF THE RECORD REFERENCE DISTANCES OF 50.00 FROM THE REFERENCE PIPES CHECKS WITH THE REFERENCE REROD DISTANCES. BECAUSE OF THE CHECKS WITH RECORD REFERENCE MONUMENTS, I DID NOT REMOVE MONUMENT COVER.

D) Describe any material discrepancy between the location of the corner as restored or reestablished and the location of that corner as previously restored or reestablished by distance and direction. Show the discrepancy on the plan view drawing under (a), above. Show the distances between the corner as previously restored or reestablished and (1) the corner as restored or reestablished, and (2) to at least 4 of the witness monuments shown on the drawing in (a), above.

NONE

(E) Was the corner reestablished through lost corner proportionate methods? If so, show the method, including the directions and distances to other public land survey corners used as evidence or used for proportioning the corner location.

NO

I, **Donald Barnes**, hereby certify that the corner location as identified by the corner code index was determined by me under my direction and control and that this U.S. Public Land Survey Monument Record is correct and complete to the best of my knowledge and belief.

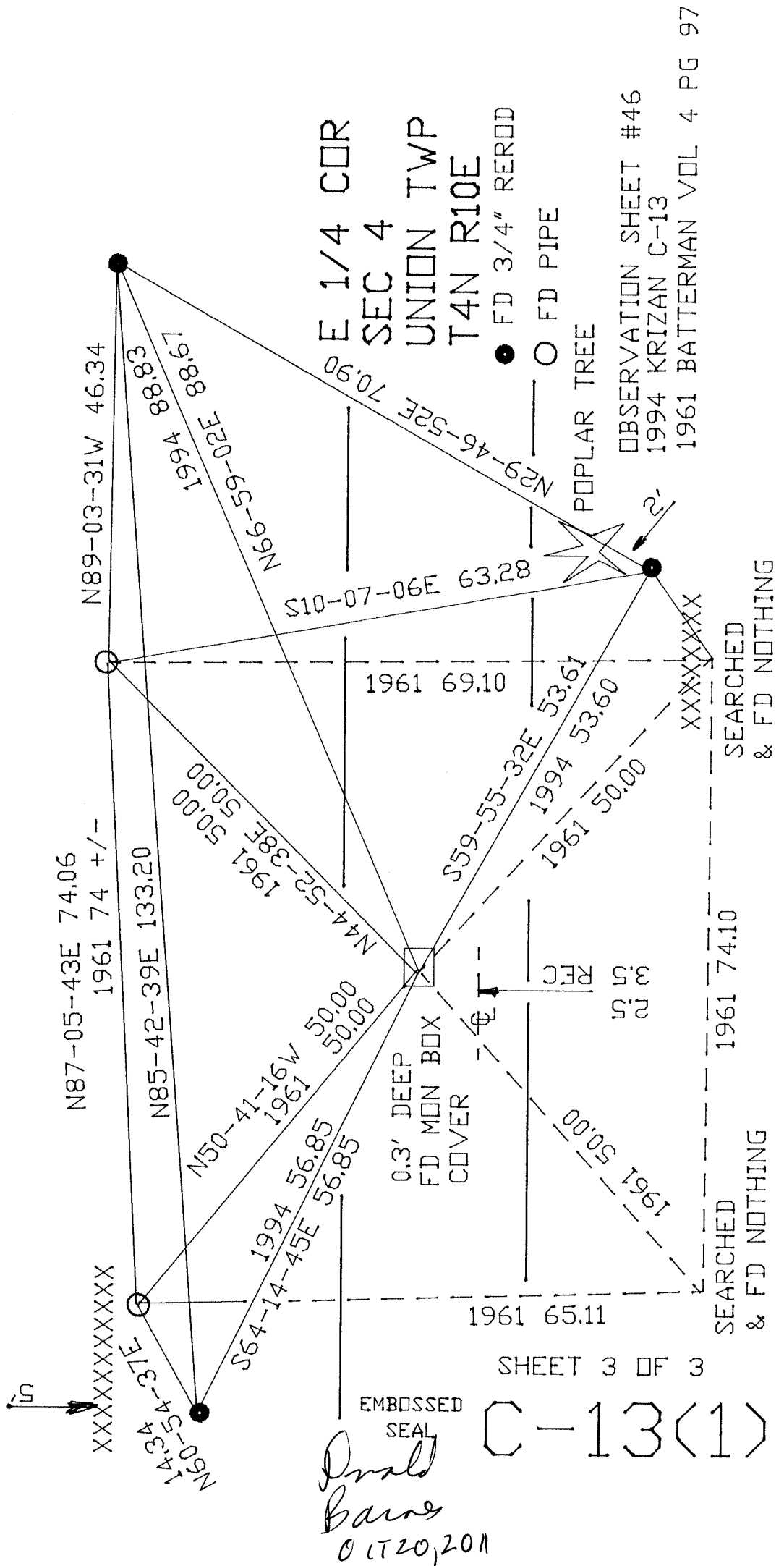
Donald Barnes
 DONALD BARNES

SHEET 2 OF 3

OCT 20, 2011

CORNER CODE C-13(1)

A.E. 7.08 REQUIREMENT



E 1/4 COR
 SEC 4
 UNION TWP
 T4N R10E

● FD 3/4" REROD
 ○ FD PIPE

POPLAR TREE

OBSERVATION SHEET #46
 1994 KRIZAN C-13
 1961 BATTERMAN VOL 4 PG 97

N89-03-31W 46.34

1994 88.83

1961 88.67

N66-59-02E 88.67

70.90

N29-46-52E 70.90

63.28

S10-07-06E 63.28

1961 69.10

1994 53.67

1961 53.60

S59-55-32E 53.67

1961 50.00

1994 50.00

N87-05-43E 74.06
 1961 74 +/-

N85-42-39E 133.20

1961 50.00

1994 50.00

N44-52-38E 50.00

1961 50.00

1994 50.00

N50-41-16W 50.00

1961 50.00

1994 50.00

S64-14-45E 56.85

1994 56.85

1961 56.85

1994 56.85

0.3' DEEP
 FD MON BOX
 COVER

RFC

25

25

XXXXXXXXXX

SEARCHED
 & FD NOTHING

1961 74.10

1961 65.11

SHEET 3 OF 3

EMBOSSED SEAL

*Donald
 Baine
 01/20/2011*

C-13(1)