

U.S. PUBLIC LAND SURVEY MONUMENT RECORD

For Public Land Survey Corners in:

WI ADMINISTRATIVE CODE A-E 7.08 REQUIREMENT

T 5 N., R. 14 E

CORNER CODE INDEX

A	1	2	3	4	5	6	7	8	9	10	11	12	13	14	15	16	17	18	19	20	21	22	23	24	25
B																									
C	6																								
D																									
E																									
F																									
G	1																								
H																									
J																									
K																									
L	18																								
M																									
N																									
O																									
P	19																								
Q																									
R																									
S																									
T	30																								
U																									
V																									
W																									
X	31																								
Y																									
Z																									

KOSHONONG TWP

ROCK COUNTY WI

IF AVAILABLE
ROCK COUNTY COORDINATES PREFERRED

North _____ Elev. _____

East _____

Hor. Datum _____ Vert. Datum _____

LATITUDE _____ ELLIPS. HT. _____

LONGITUDE _____

GPS (X) _____ TRAVERSE (X) _____

BASED ON THE FOLLOWING CONTROL:

PLACE MONUMENT SYMBOL \blacklozenge AT PROPER LOCATION ON ABOVE INDEX

\blacklozenge CORNER MONUMENT

\circ WITNESS MONUMENT

(a)

THOMAS WOLLIN, JEFFERSON COUNTY SURVEYOR,
PROVIDED THE STATE PLANE COORDINATES FOR
CORNER CODE #6501 COR SE SEC 32 T 5 N R 14 E

STATE PLANE COORDINATES N/S 309, 925.700
NAD 1983/91 OF RECORD E/W 2,275,324.161

I DONALD BARNES CONVERTED THE ABOVE
COORDINATES TO THE FOLLOWING:

LATITUDE 42-50-40, 44559
LONGITUDE 88-51-21.27432
MERIDIAN CONV. 0-47-09.99
SCALE FACTOR 0.9999794313

ROCK COUNTY COORDINATES (NAD 1983/91)

N/S 328, 124, 955
E/W 538, 016, 089
SCALE 0, 9999998451

CONVERGENCE: THE ANGULAR DIFFERENCE
BETWEEN THE GEODETIC NORTH & THE ROCK
COUNTY MERCATOR NORTH

$\oplus/-$ DEG 0 MIN 08 SEC 49.5

BEARINGS ARE BASED ON:

Donald Barnes
2/12/03

FIELD BOOK _____ PAGE # _____

SHEET 1 OF 1

SHOW A PLAN VIEW DRAWING DEPICTING THE CORNER MONUMENT AND SURROUNDING
PHYSICAL FEATURES, INCLUDING THE EXCAVATION AREA AND DEPTH.

PLANNING & ZONING COMMITTEE ADOPTED THE ABOVE FORM ON 12/2/1982

File in LIMA TWP

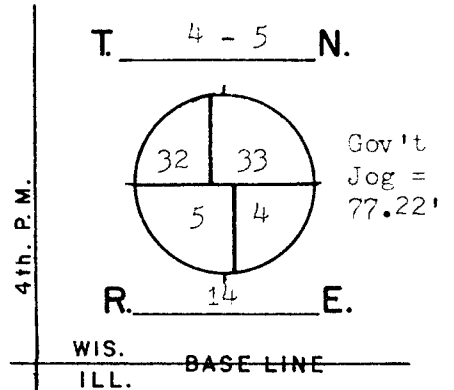
CORNER CODE A-8/9

GOVERNMENT LAND CORNER RECORD*

JEFFERSON COUNTY

CORNER NO. 6501

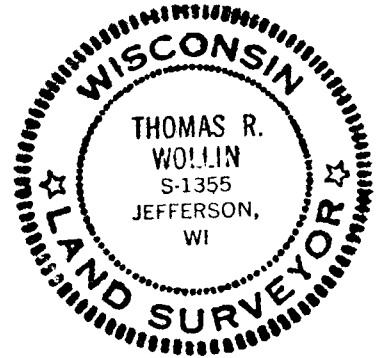
TYPE OF MONUMENT Limestone & Aluminum
 STATE PLANE COORDINATES N. 309925.700
NAD 1983/91 E. 2275324.161 SE-32
 ELEVATION M.S.L. DATUM: _____
Grid-Ground 1.0000581500
 FIELD BOOK Koshkonong p. 150
 DRAWN BY TRW



BASIS FOR MONUMENTATION

Original Survey, 1834-37, Wood Post & Bearing Trees
 Resurvey of Koshkonong Township, by Milo C. Jones,
 August-December, 1886. Field notes say that the
 corner was verified. A limestone monument, Approx.
 6" by 36" long with a squared finished top, was set
 for the corner. Notes recorded in the Register of
 Deeds, Miscellaneous Volume 1, pages 389-412.
 1981, The Resurvey stone for Koshkonong was found by
 Rock Co. Surveyor. The stone is about even with the
 surface of the ground. The corner to Rock County
 was also established and an Aluminum Monument was set.
 I set an Aluminum Witness monument next to the stone.
 3/12/2002, G.P.S. coordinates are assigned. A Topcon
 GP-SX1 single-frequency receiver was used.

SEAL:

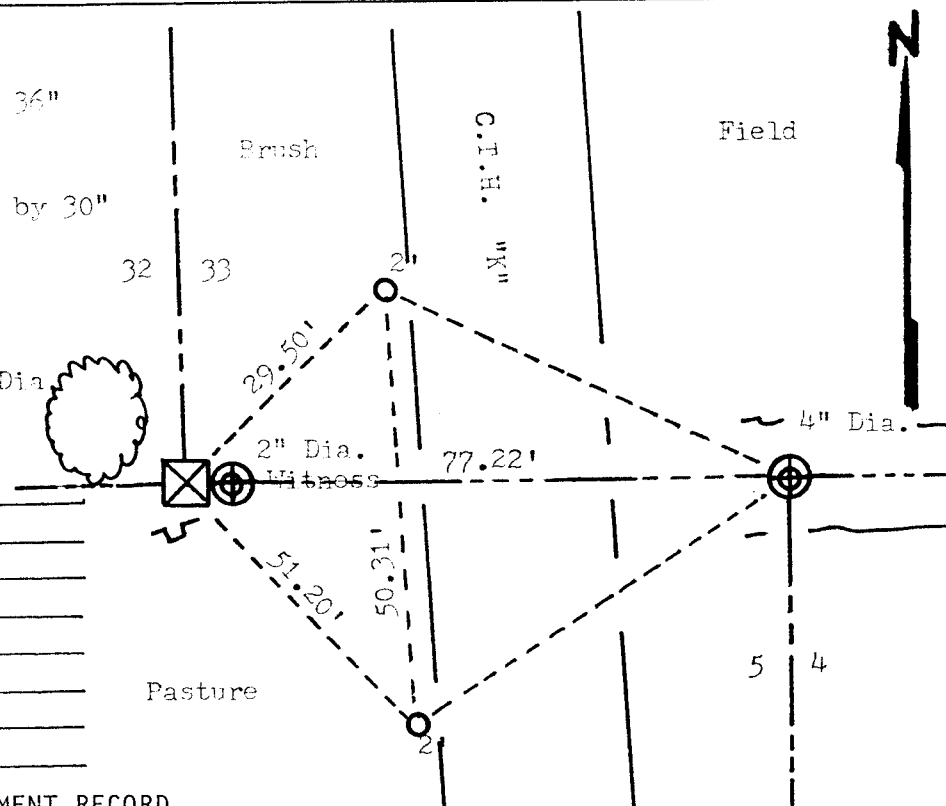


DATA SHOWN HERE ON
 CERTIFIED CORRECT:

Thomas R. Wollin
 REGISTERED LAND SURVEYOR
 DATED 7/1/1982

LOCATION SKETCH

- ☒ SQUARE CUT LIMESTONE 6" by 36"
- CONCRETE / BRASS CAP
- ⊕ ALUMINUM MAGNETIZED 2"-4" by 30"
- IRON PIPE 1" by 24"
- RR SPIKE
- + PK NAIL
- *** FENCE
- ⊗ UTILITY POLE
- ⌚ STEEL POST / SIGN



MAINTENANCE RECORD

DATE	INIT.	REMARKS

* U.S. PUBLIC LAND SURVEY MONUMENT RECORD

A-819