

U.S. PUBLIC LAND SURVEY MONUMENT RECORD

For Public Land Survey Corners In:

WI ADMINISTRATIVE CODE A-E 7.08 REQUIREMENT

T. 2 N. R. 12 E.

CORNER CODE INDEX

1	2	3	4	5	6	7	8	9	10	11	12	13	14	15	16	17	18	19	20	21	22	23	24	25	
A																									A
B	6					5				4				3			2				1				B
C																									C
D																									D
E																									E
F																									F
G	7					8				9				10			11				12				G
H																									H
J																									J
K	18					17				16				15			14				13				K
L																									L
M																									M
N																									N
O																									O
P	19					20				21				22			23				24				P
Q																									Q
R																									R
S																									S
T	30					29				28				27			26				25				T
U																									U
V																									V
W																									W
X	31					32				33				34			35				36				X
Y																									Y
Z																									Z

ROCK TWP

ROCK COUNTY WI

IF AVAILABLE
ROCK COUNTY COORDINATES PREFERRED

North _____ Elev. _____

East _____

Hor. Datum _____ Vert. Datum _____

LATITUDE _____ ELLIPS. HT. _____

LONGITUDE _____

GPS (X) _____ TRAVERSE (X) _____

BASED ON THE FOLLOWING CONTROL:

PLACE MONUMENT SYMBOL AT PROPER LOCATION ON ABOVE INDEX

CORNER MONUMENT

WITNESS MONUMENT

BEARINGS ARE BASED ON: _____

FIELD BOOK _____ PAGE # _____

SHEET 1 OF 2

SHOW A PLAN VIEW DRAWING DEPICTING THE CORNER MONUMENT AND SURROUNDING PHYSICAL FEATURES, INCLUDING THE EXCAVATION AREA AND DEPTH.

PLANNING & ZONING COMMITTEE ADOPTED THE ABOVE FORM ON 12/2/1982

CORNER CODE N 17 (1)

R0569

(B) Describe any record evidence, monument evidence, occupational evidence, testimonial evidence or any other material evidence you considered, and whether the monument was found or placed.

1861 RUGER VOL 1 PG 168 SET LIMESTONE 15X5X3
1867 LOCKE VOL 1 PG 284 FOUND CORNER SET BY RUGER
1939 SUNNY VOL 3 PG 463 FOUND LIMESTONE.
1941 SUNNY VOL 3 PG 469 FD LIMESTONE, SET 2" PIPE
1978 HURD VOL 5 PG 517 MAPPING COORDINATES
1980 BARNES FB 1 PG 73 FD 2" PIPE REPLACED WITH ALUMINUM
1988 BARNES N-17 FD ALUM. MON. PLACED CARSONITE POST ON
SOUTH SIDE & REFERENCED SAME.

FD ALUM. MON. CORNER WILL BE DISTURBED BY MAJOR AIRPORT
RUNWAY IMPROVEMENT PROJECT.

C) Was the corner restored through acceptance of (1) an obliterated evidence location, or, (2) a found perpetuated location?

ACCEPTED FOUND PERPETUATED LOCATION

D) Describe any material discrepancy between the location of the corner as restored or reestablished and the location of that corner as previously restored or reestablished by distance and direction. Show the discrepancy on the plan view drawing under (a), above. Show the distances between the corner as previously restored or reestablished and (1) the corner as restored or reestablished, and (2) to at least 4 of the witness monuments shown on the drawing in (a), above.

NONE

(E) Was the corner reestablished through lost corner proportionate methods? If so, show the method, including the directions and distances to other public land survey corners used as evidence or used for proportioning the corner location.

NO

I, Donald Barnes, hereby certify that the corner location as identified by the corner code index was determined by me under my direction and control and that this U.S. Public Land Survey Monument Record is correct and complete to the best of my knowledge and belief.

Seal

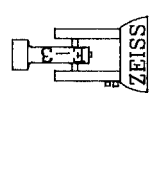
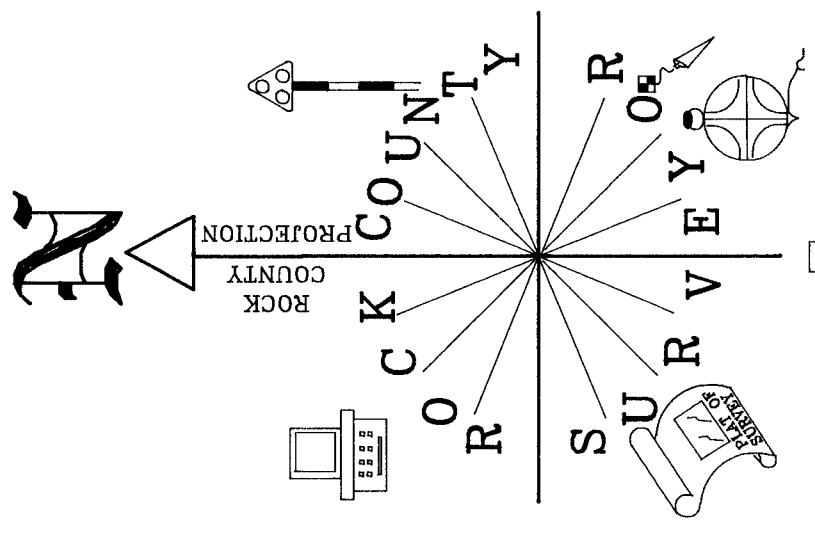
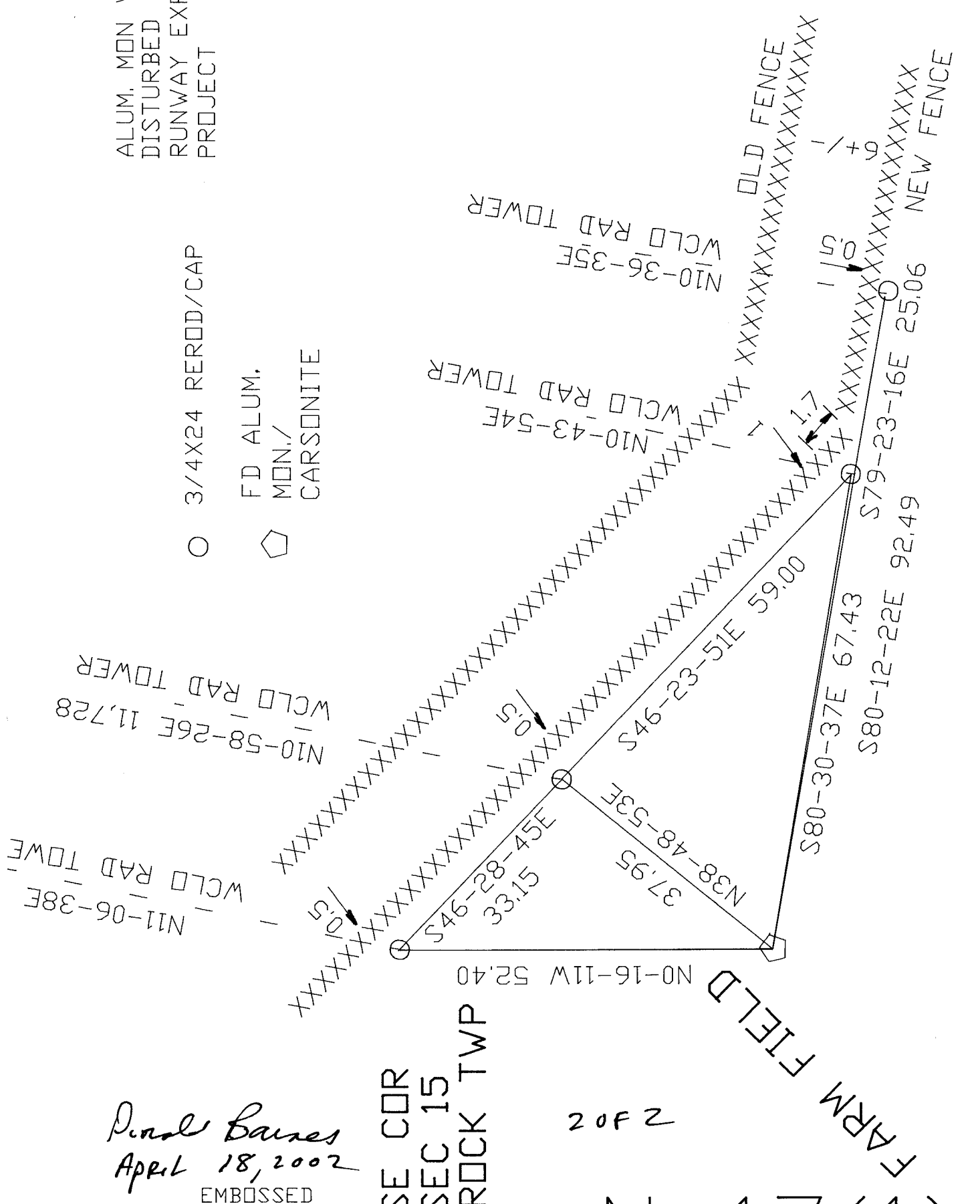
SHEET 1 OF 2

Emboss
Donald Barnes
Apr. 18 2002

CORNER CODE N-17(1)
A.E. 7.08 REQUIREMENT

ALUM. MON WILL BE
DISTURBED BY
RUNWAY EXPANSION
PROJECT

- 3/4X24 REROD/CAP
- FD ALUM.
MON./
CARSONITE



NOT TO SCALE

OBSERVATION SHEET #56'

David Baines
April 18, 2002
EMBOSSED
SEAL

SE COR
SEC 15
ROCK TWP

2 OF 2

FARM FIELD
N-17(1)