

U.S. PUBLIC LAND SURVEY MONUMENT RECORD

For Public Land Survey Corners in:
T. 2N., R. 12E

WI ADMINISTRATIVE CODE A-E 7.08 REQUIREMENT

CORNER CODE INDEX

A	2	3	4	5	6	7	8	9	10	11	12	13	14	15	16	17	18	19	20	21	22	23	24	25
B																								
C	6																							
D																								
E																								
F																								
G	1																							
H																								
J																								
K																								
L	18																							
M																								
N																								
O																								
P	19																							
Q																								
R																								
S																								
T	30																							
U																								
V																								
W																								
X																								
Y																								
Z																								

ROCK TWP
ROCK COUNTY WI

IF AVAILABLE
ROCK COUNTY COORDINATES PREFERRED

North _____ Elev. _____

East _____

Hor. Datum _____ Vert. Datum _____

LATITUDE _____ ELLIPS. HT. _____

LONGITUDE _____

GPS (X) _____ TRAVERSE (X) _____

BASED ON THE FOLLOWING CONTROL:

PLACE MONUMENT SYMBOL AT PROPER LOCATION ON ABOVE INDEX

CORNER MONUMENT

WITNESS MONUMENT

(a)

BEARINGS ARE BASED ON:

FIELD BOOK _____ PAGE # _____

SHEET 1 OF 4

SHOW A PLAN VIEW DRAWING DEPICTING THE CORNER MONUMENT AND SURROUNDING PHYSICAL FEATURES, INCLUDING THE EXCAVATION AREA AND DEPTH.

PLANNING & ZONING COMMITTEE ADOPTED THE ABOVE FORM ON 12/2/1982

CORNER CODE V23(3)

ROGEN 13

(B) Describe any record evidence, monument evidence, occupational evidence, testimonial evidence or any other material evidence you considered, and whether the monument was found or placed.

- 1869 LEE VOL 1 PG 346 & #03911 SET STAKE AT INTERSECTION & SURROUNDED BY 3 HH. 2650.56 TO W 1/4 COR SEC 13 & 2647.92 TO N 1/4 COR SEC 13
- 1877 RUGER VOL 2 PG 237 & #03906 FD COR SET BY LEE 2564.43 TO E 1/4 COR SEC 13.
- 1890 BLEEDORN VOL 2 PG 434 & #03971 FD STAKE SURROUNDED BY 3 L.S. SET BY RUGER. 2633.4 TO S 1/4 COR SEC 13.
- 1948 SUNNY #3883, 3956 & 06894 STATES NOTHING ABOUT MON. SOUTHERLY 1309.1 TO FD IRON PIPE & 2649.6 TO W 1/4 COR SEC 13
- 1954 SUNNY #06895 STATES NOTHING ABOUT MON. 2649.6 TO W 1/4 COR SEC 13
- 1961 BATTERMAN #03959 AIRPORT SURVEY. SET SPIKE BY REFERENCE TIES. 2633.60 TO S 1/4 COR SEC 13
- 1964 BATTERMAN #03958 AIRPORT SURVEY SET SPIKE IN BLACK TOP. SOUTHERLY 1316.80 TO FD 2" IP & 2633.60 TO S 1/4 COR SEC 13
- 1973 COMBS #03964 FD NAIL & CAP
- 1978 TRUE CSM VOL 7 PG 206 LOCATED FROM COUNTY SURVEYORS REF. PIPES. 2651.53 TO W 1/4 COR SEC 13.
- 1980 COMBS #03978 STATES NOTHING ABOUT MON. S88-55-20E 1327.5 & SO-13-25E 2633.83 TO S 1/4 COR SEC 13
- 1987 DOT #11106 60d NAIL 233,028,21; 2,263,421.05
- 1987 COMBS #12323 STATES NOTHING ABOUT MON. SOUTHERLY 1320 TO FD PIN
- 1989 BARNES VOL 6 PG 395 ANGLE @ CENTER FROM E 1/4 COR SEC 13 TO W 1/16TH COR OF SE 1/4 SEC 13 88-41-43 (1980 COMBS 88-41-55) DOT 233,039.28; 2,263,421.05. S89-22-18E 2567.60 TO E 1/4 COR SEC 13, N89-38-20W 2651.54 (DOT N89-51-31W 2651.60) TO W 1/4 COR SEC 13, SO-40-03E 2633.76 (1980 COMBS 2663.83, 1961 BATTERMAN 2633.60) TO S 1/4 COR SEC 13, SO-40-25E 1316.01 TO W 1/16TH COR OF SE 1/4 SEC 13
- 1990 BARNES L-23 #16760 VOCD STH 233,039.28; 2,263,421.05 PROJECT #5636-01-21
- 1990 BARNES L-23(2) FK PK & REFERENCED SAME.
- 1990 TRUE CSM VOL 14 PG 244 STATES NOTHING ABOUT MON. 2651.53 TO W 1/4 COR SEC 13
- 1999 LATHROP #07545 & 7546 BRASS CAP IN CONCRETE. ANGLE 88-35-50 @ E 1/4 COR SEC 13 FROM CENTER OF SEC 13 TO E 1/4 COR SEC 13.
- 1999 DOT #22183 NAIL WITH CAP Y= 71,029.261M; X= 680,279.593M. N89-38-26W 2651.52 TO W 1/4 COR SEC 13.
- 2001 DOT #24867 N89-38-26W 2651.52 TO W 1/4 COR SEC 13 & S89-22-24E 2567.62 TO E 1/4 COR SEC 13
- 2001 COMBS CSM VOL 24 PG 355 2567.60 TO E 1/4 COR SEC 13 & ANGLE 88-35-50 @ E 1/4 COR SEC 13 FROM CENTER SEC 13 TO NE COR SEC 13.
- 2001 COMBS #14220 FD BRASS CAP S88-41-40E 2567.60 TO E 1/4 COR SEC 13
- 2003 DOT #25143 NAIL/CAP. S89-22-24E 2567.62 TO E 1/4 COR SEC 13. Y=71,029.261M; X=680,279.593M
- 2003 BARNES L-23(1) INFORMATION PROVIDED BY WIDOT PROJECT #1704-06-21. SHEET #4.4. NAIL WITH CAP. NOTE: COORDINATES AND BEARINGS ON THIS PLAT ARE ORIENTED TO THE WI. COORDINATES SYSTEM SOUTH ZONE NAD83. COORDINATES ARE IN METERS. Y=71,029.261M

SHEET 1 OF 4

L-23(3)

Ronald Barnes
May 27 2004

ROGEN 13

X=680,279.593. I DON BARNES CONVERTED THE ABOVE
COORDINATES TO THE FOLLOWING ROCK COUNTY
COORDINATES; N/S 251,720.57; E/W 403,720.06

FOUND DOT DISK IN MON. BOX. MONUMENT WILL PROBABLY BE
DESTROYED BY MAJOR ROAD CONSTRUCTION.

C) Was the corner restored through acceptance of (1) an obliterated evidence location, or, (2) a found perpetuated location?

ACCEPTED FOUND PERPETUATED LOCATION.

D) Describe any material discrepancy between the location of the corner as restored or reestablished and the location of that corner as previously restored or reestablished by distance and direction. Show the discrepancy on the plan view drawing under (a), above. Show the distances between the corner as previously restored or reestablished and (1) the corner as restored or reestablished, and (2) to at least 4 of the witness monuments shown on the drawing in (a), above.

(E) Was the corner reestablished through lost corner proportionate methods? If so, show the method, including the directions and distances to other public land survey corners used as evidence or used for proportioning the corner location.

I, **Donald Barnes**, hereby certify that the corner location as identified by the corner code index was determined by me under my direction and control and that this U.S. Public Land Survey Monument Record is correct and complete to the best of my knowledge and belief.

Seal
Donald Barnes
Emboss

SHEET 2 OF 4

May 27 2004

CORNER CODE **L-23(3)**

A.E. 7.08 REQUIREMENT

U.S. PUBLIC LAND SURVEY MONUMENT RECORD

For Public Land Survey Corners in:
T. 2N., R. 12E

WI ADMINISTRATIVE CODE A-E 7.08 REQUIREMENT

CORNER CODE INDEX

A	1	2	3	4	5	6	7	8	9	10	11	12	13	14	15	16	17	18	19	20	21	22	23	24	25
B																									
C	6																								
D																									
E																									
F																									
G	7																								
H																									
J																									
K																									
L	18																								
M																									
N																									
O																									
P	19																								
Q																									
R																									
S																									
T	30																								
U																									
V																									
W																									
X																									
Y																									
Z																									

Rock TWP
ROCK COUNTY WI

IF AVAILABLE
ROCK COUNTY COORDINATES PREFERRED

North _____ Elev. _____

East _____

Hor. Datum _____ Vert. Datum _____

LATITUDE _____ ELLIPS. HT. _____

LONGITUDE _____

GPS (X) _____ TRAVERSE (X) _____

BASED ON THE FOLLOWING CONTROL:

PLACE MONUMENT SYMBOL AT PROPER LOCATION ON ABOVE INDEX

CORNER MONUMENT

WITNESS MONUMENT

(a)

BEARINGS ARE BASED ON:

2001 DOT 251,720.57
A93,720.06

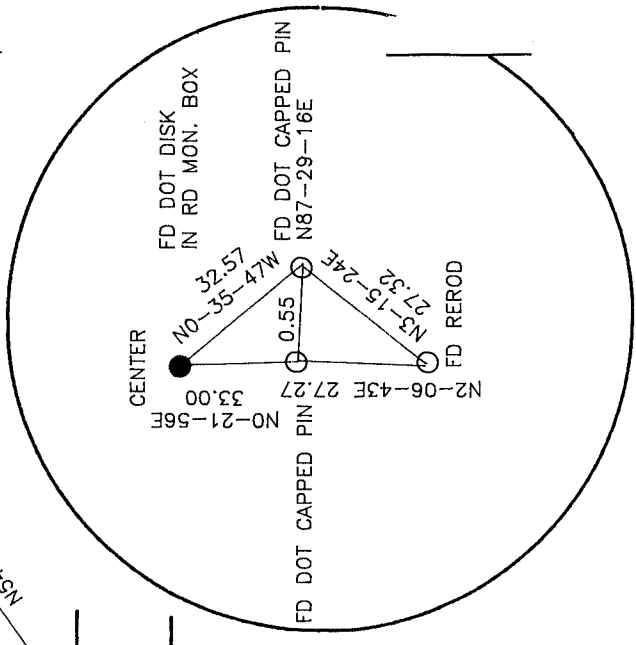
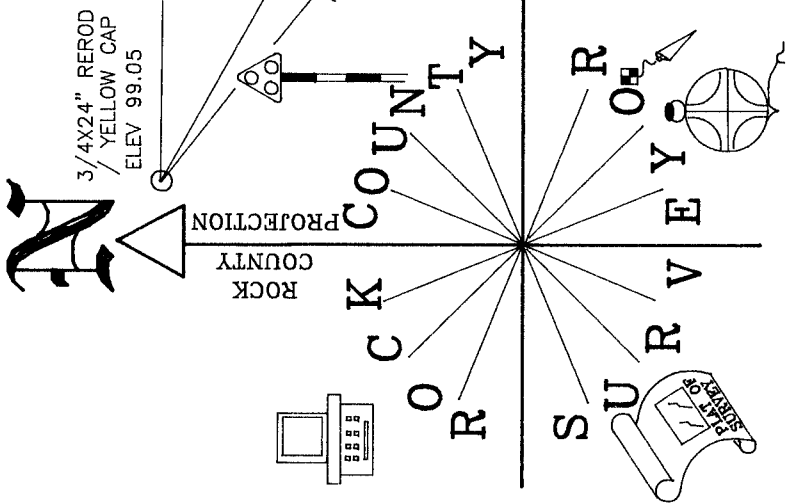
FIELD BOOK _____ PAGE # _____

SHEET 3 OF 4

SHOW A PLAN VIEW DRAWING DEPICTING THE CORNER MONUMENT AND SURROUNDING PHYSICAL FEATURES, INCLUDING THE EXCAVATION AREA AND DEPTH.

PLANNING & ZONING COMMITTEE ADOPTED THE ABOVE FORM ON 12/2/1982

CORNER CODE L-23(2)



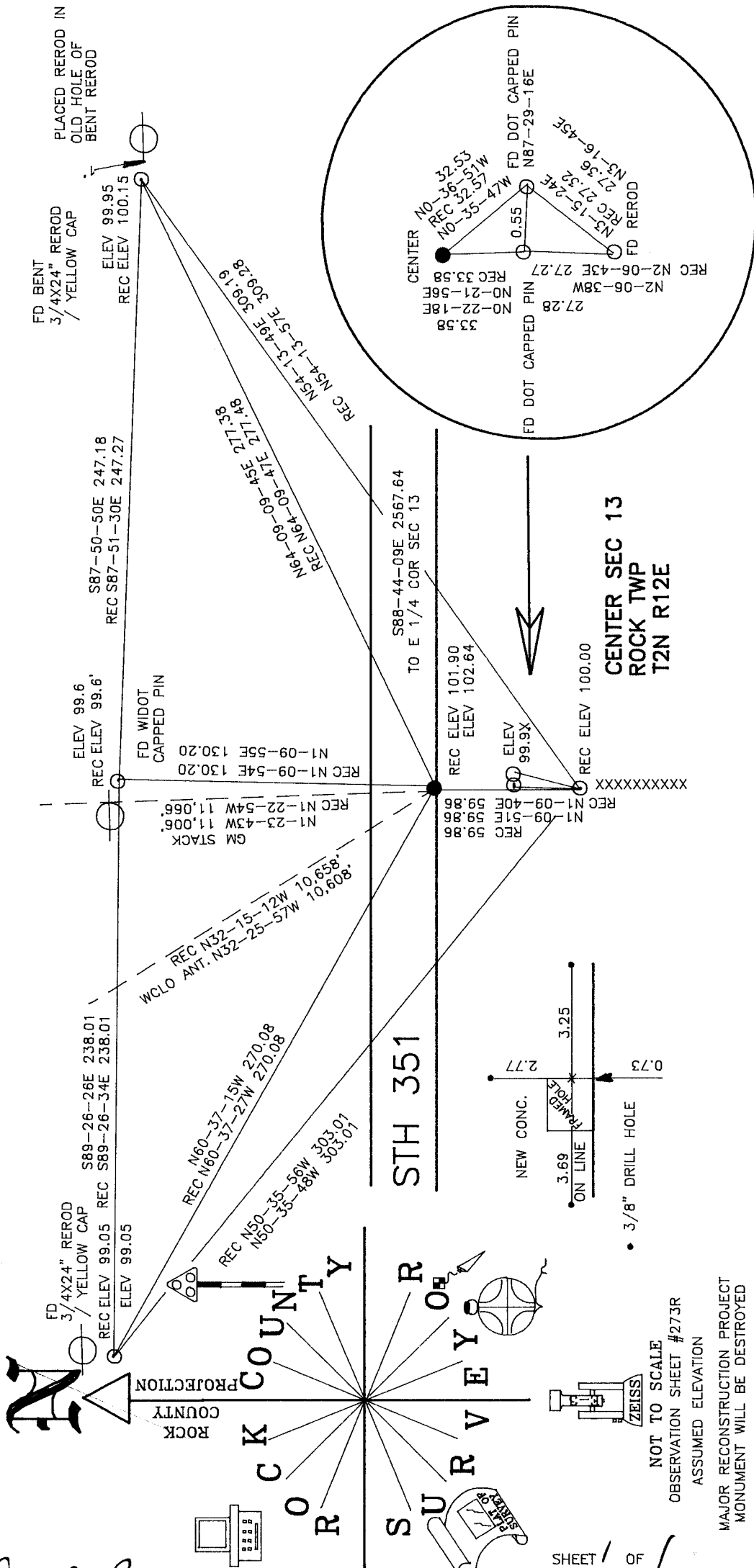
EMBOSSSED SEAL
Donald Barnes
 May 27 2004

L-23(2)

SHEET OF
 NOT TO SCALE
 OBSERVATION SHEET #273R
 ASSUMED ELEVATION
 MAJOR RECONSTRUCTION PROJECT
 MONUMENT WILL BE DESTROYED

STH 11
 CENTER SEC 13
 ROCK TWP
 T2N R12E

Donald Barnes
 EMPRESSED SEAL
 Sep 19, 2004



NOT TO SCALE
 OBSERVATION SHEET #273R
 ASSUMED ELEVATION
 MAJOR RECONSTRUCTION PROJECT
 MONUMENT WILL BE DESTROYED

SHEET 1 OF 1

L-23(3)