

U.S. PUBLIC LAND SURVEY MONUMENT RECORD

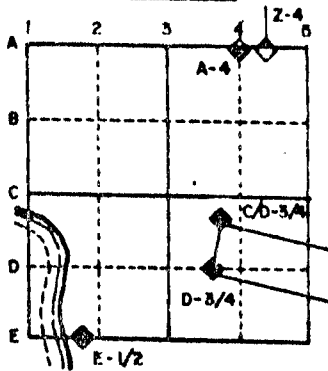
For Public Land Survey Corners in the

T. 2 N., R. 12 E.

CORNER CODE INDEX

	1	2	3	4	5	6	7	8	9	10	11	12	13	14	15	16	17	18	19	20	21	22	23	24	25
A																									
B																									
C	6																								
D		5																							
E			4																						
F				3																					
G					2																				
H																									
I																									
J	7																								
K		8																							
L			9																						
M				10																					
N					11																				
O						12																			
P							13																		
Q								14																	
R									15																
S										16															
T											17														
U												18													
V													19												
W														20											
X															21										
Y																22									
Z																	23								
																		24							
																			25						
																				26					
																					27				
																						28			
																							29		
																								30	
																									31
																									32
																									33
																									34
																									35
																									36

EXAMPLE



ROCK TWP
ROCK COUNTY WI

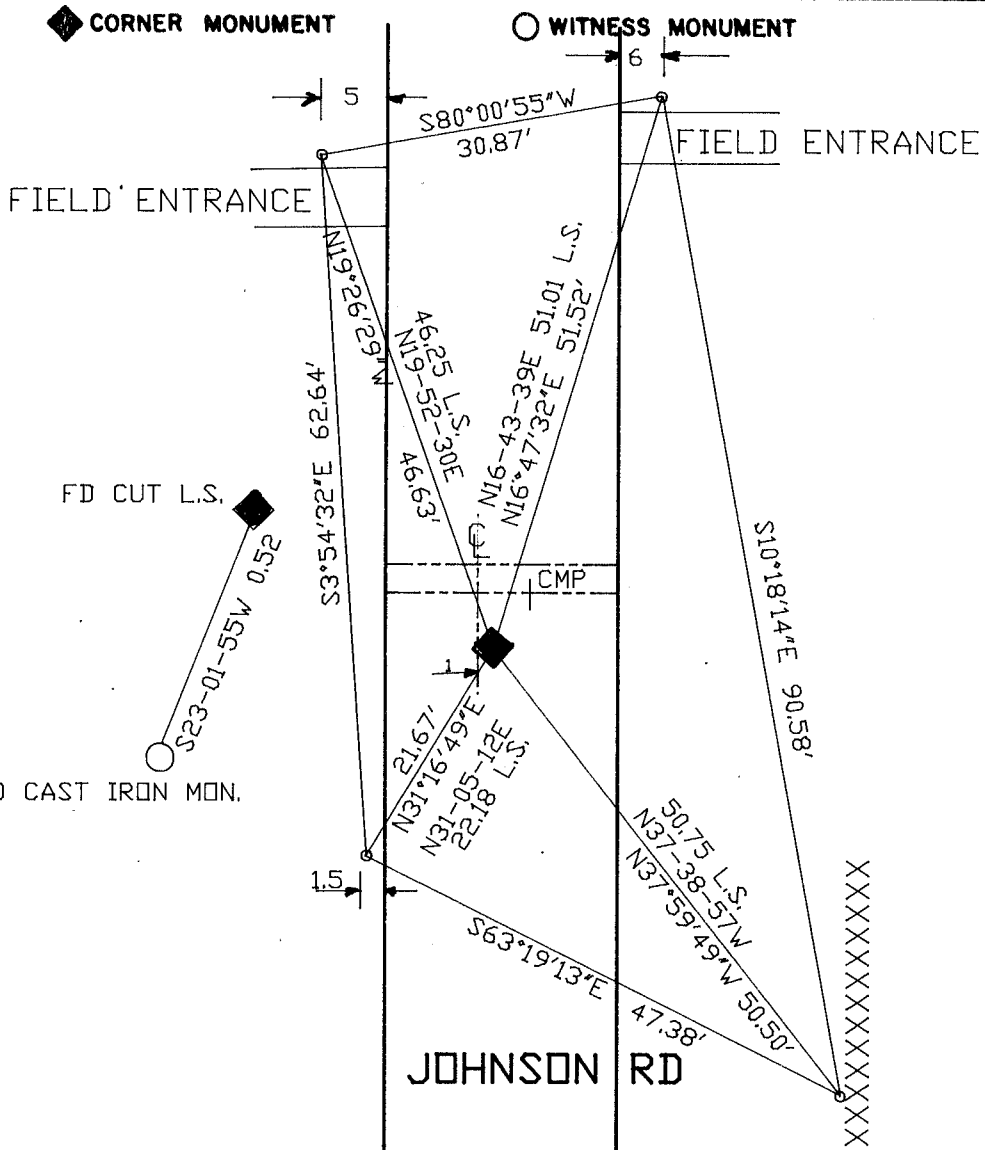
IF AVAILABLE
 STATE PLANE COORDINATES

NAD 27
 North (Y) 224,909.69 Eleve. (Z) _____
 East (X) 2,234,300.36 Zone _____
 Hor. Datum _____ Vert. Datum _____
 WPL 224,908.66
2,234,298.70

PLACE MONUMENT SYMBOL (◆) AT PROPER
 LOCATION ON ABOVE INDEX

a.)

◆ CORNER MONUMENT ○ WITNESS MONUMENT



BEARINGS ARE BASED ON: Township Proj

◆ OBSERVATION STA #581
 ◆ FOUND CUT LIME STONE
 ○ 3/4x24" REROD

MICROFILMED

SHEET ___ OF ___

CORNER CODE: R1(1)

(B) Describe any record evidence, monument evidence, occupational evidence, testimonial evidence or any other material evidence you considered, and whether the monument was found or placed.

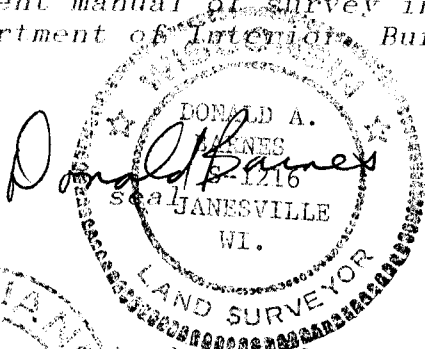
- 1833 MULLETT ORIGINAL GOVERNMENT SURVEYOR. NORTH ON EAST SIDE SECTION 25. SET POST CORNER SECTION 24 & 25 AND RAISED A MOUND.
- 1834 HARRISON ORIGINAL GOVERNMENT SURVEYOR. WEST BETWEEN 19 & 30. W. BDG IN MARSH 62 N OF P. MARKED SAME FOR COR TO SEC 19 & 30. LAND ALL MARSH.
- 1868 LOCKE PLYMOUTH TOWNSHIP REMONUMENTATION FIELD NOTES. EAST BETWEEN SECTION 24 AND 25. INTERSECTED EAST BOUNDARY 15.18' NORTH OF CORNER. FOUND MOUND IN LINE WITH FENCES RUNNING SOUTH AND EAST. PLACED CUT LIMESTONE. SHOWS A DISTANCE OF 2671.02' TO SOUTH 1/4 OF SECTION 24 PLYMOUTH TOWNSHIP, 2647.92 TO E 1/4 COR SEC 24, 2659.80' TO E 1/4 CORNER OF SECTION 25 PLYMOUTH TOWNSHIP.
- 1892 BLEEDORN VOL 2 PG 466 FOUND MONUMENT AT SE COR SEC 24 PLYMOUTH. SHOWS A DISTANCE OF 2663.10' TO S 1/4 CORNER AND 2645.28 TO E 1/4 CORNERS OF SECTION 24 PLYMOUTH TOWNSHIP.
- 1961 BATTERMAN VOL 4 PG 16 RESET 1" PIPE FROM OLD TIES AND REFERENCED SAME. SHOWS WPL COORDINATES OF N/S 224908.56; E/W 2,234,298.70
- 1972 LEE VOL 4 PG 577 SHOWS DISTANCE FROM NW TO N 1/4 CORNERS OF SECTION 30 AS 2689.88 AND 2658.64 FROM NW TO W 1/4 CORNERS OF SECTION 30.
- 1981 BARNES VOL 6 PG 144 SHOWS WPL BEARING AND DISTANCE OF S89-55-15E 2690.37 FROM NW TO N 1/4 CORNERS OF SECTION 30 AND N1-02-37W 2658.70 FROM NW TO W 1/4 CORNERS OF SECTION 30.
- 1982 BARNES VOL 6 PG 282 SHOWS A DISTANCE FROM NW CORNER OF SECTION 30 TO S 1/4 CORNER OF SECTION 24 PLYMOUTH TOWNSHIP AS 2666.42.

FOUND CAST IRON MONUMENT. LEE STATED THAT HE DID NOT DIG FOR CUT LIMESTONE. DUG AND FOUND CUT LIMESTONE N23-01-55E .52 OF THE CAST IRON MONUMENT. CAST IRON MONUMENT WAS REMOVED AS A RESULT OF THE EXCAVATION. CUT LIMESTONE IS 2.1' DEEP. PLACED MAGNETS 17 INCHES BELOW THE TOP OF THE STONE.

C) Was the corner restored through acceptance of (1) an obliterated evidence location, or, (2) a found perpetuated location?

ACCEPTED FOUND CUT LIMESTONE.

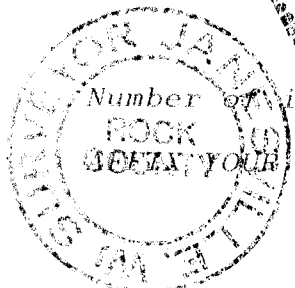
I, Donald Barnes, hereby certify that the corner points as identified by the corner code index were, in a field survey on, JUNE 21, 1989, established, re-established, monumented, re-monumented, recovered or restored as expressed below and in conformance with the regulations and rules as required in the current manual of survey instructions of the United States Department of Interior, Bureau of Land Management.



COUNTY SURVEYOR FILING DATA

Date of computer entry _____

Date microfilmed _____



Number of included sheets _____
LAND SURVEYOR SEAL

CORNER CODE

R1(1)