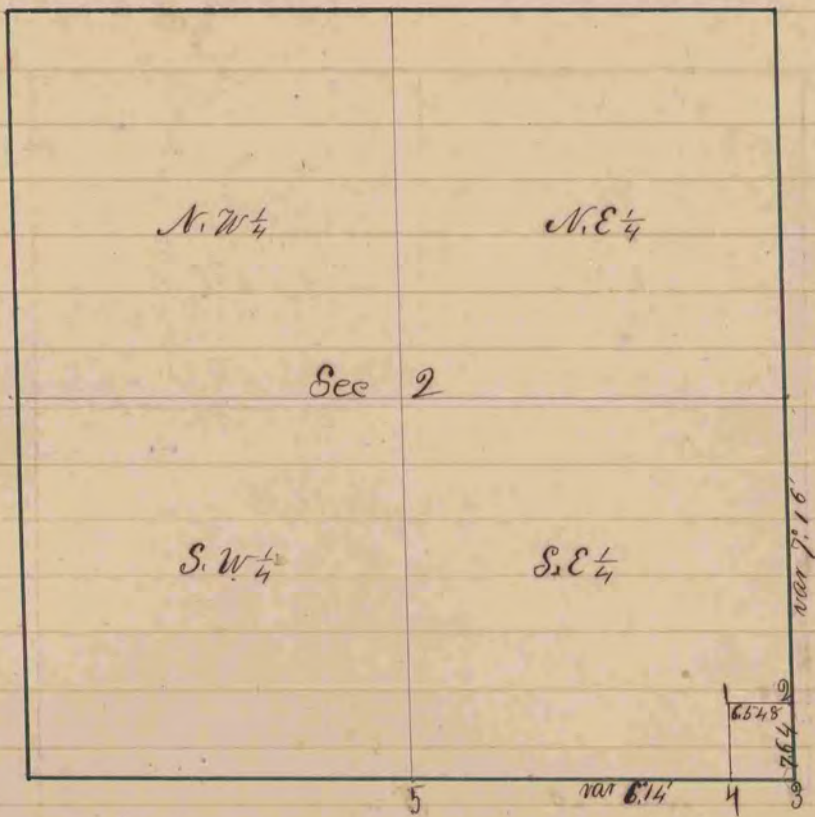


A Record and Plat of Sec 2 in Town 1 Range 13 for J. Swingle +  
Mr. Besseguier Surveyed Feb 24<sup>th</sup> 1859 by Edward Rager  
County Surveyor of Rock County Wis

Distances given in chains  
variations marked on the lines

Juste



- Fig 3 old witness trees gone took new ones  
 " " White Oak 36 S 31° 23' E 157 1/2  
 " " " " 4 N 46° 37' W 68 var  
 " 5 took new witness trees  
 " " Black Oak 48 S 7° 15' W 141 1/2  
 " " " " 10 N 72° 50' W 108 var 6.14