

# U.S. PUBLIC LAND SURVEY MONUMENT RECORD

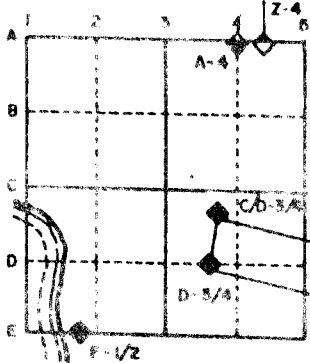
For Public Land Survey Corners in the  
T. 2 N., R. 12 E.

## CORNER CODE INDEX

	1	2	3	4	5	6	7	8	9	10	11	12	13	14	15	16	17	18	19	20	21	22	23	24	25
A																									
B																									
C																									
D																									
E																									
F																									
G																									
H																									
I																									
J																									
K																									
L																									
M																									
N																									
O																									
P																									
Q																									
R																									
S																									
T																									
U																									
V																									
W																									
X																									
Y																									
Z																									

PLACE MONUMENT SYMBOL (◆) AT PROPER LOCATION ON ABOVE INDEX

### EXAMPLE



ROCK TWP  
ROCK COUNTY WI

IF AVAILABLE  
STATE PLANE COORDINATES

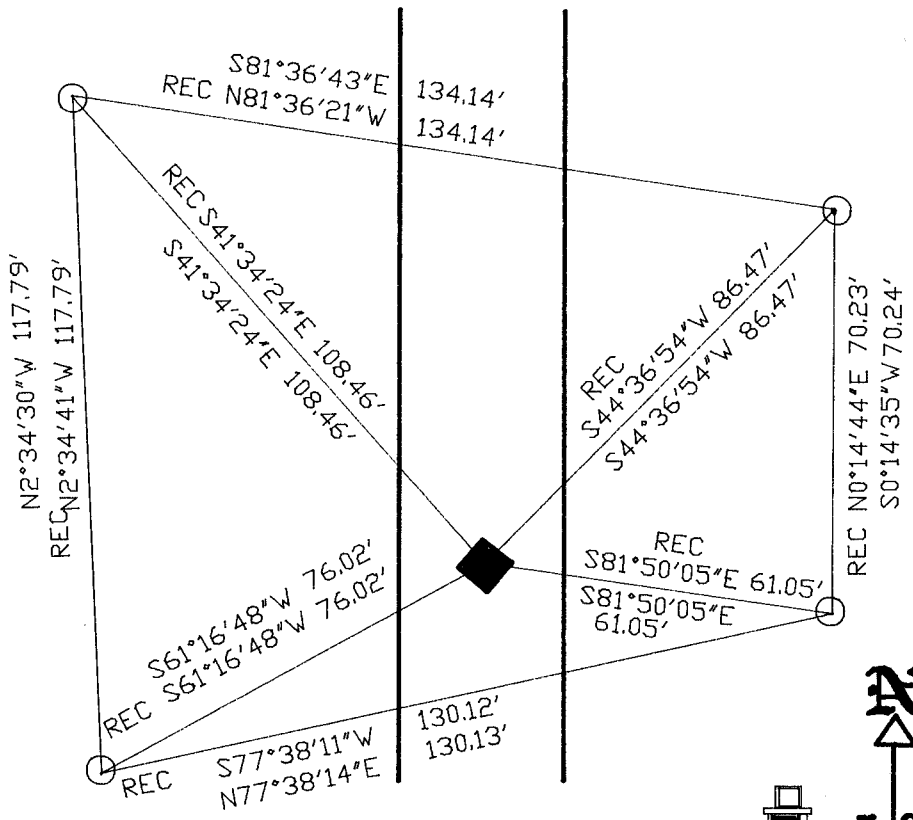
North (Y) \_\_\_\_\_ Eleve. (Z) \_\_\_\_\_  
 East (X) \_\_\_\_\_ Zone \_\_\_\_\_  
 Hor. Datum \_\_\_\_\_ Vert. Datum \_\_\_\_\_

(a.)

◆ CORNER MONUMENT      ○ WITNESS MONUMENT

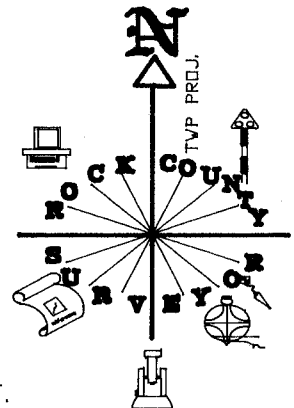
STH 51

BEARINGS ARE BASED ON:



OBSERVATION SHEETS

- ◆ FOUND DOT DISK IN CONCRETE IN ROUND MONUMENT BOX DRILLED HOLE AT INTERSECTION OF RECORD TIE DISTANCES
- FOUND DOT DISK IN CONCRETE MONUMENT.



FIELD BOOK \_\_\_\_\_ PAGE # \_\_\_\_\_

MICROFILMED

SHOW A PLAN VIEW DRAWING DEPICTING THE CORNER MONUMENT AND SURROUNDING PHYSICAL FEATURES, INCLUDING THE EXCAVATION AREA AND DEPTH. THE CORNER MONUMENT SHALL HAVE THE FOLLOWING CHARACTERISTICS: 1) HAVE AT LEAST TWO PREDETERMINED BREAK-OFF POINTS. 2) IF BROKEN, LEAVE A PERMANENTLY MAGNETIZED REMNANT AT THE ORIGINAL POINT. 3) MUST BE EXTENDABLE. 4) THE CAP IS INSCRIBED: ROCK COUNTY SURVEY MONUMENT - PENALTY FOR DISTURBING MARKER. 5) OR AN EXISTING CUT LIMESTONE. AN IRON PIPE 1 1/2" x 4"0" (MINIMUM) MAY BE USED IN AREAS WHERE GROUND WATER IS WITHIN ONE FOOT OF THE SURFACE. IF THE CORNER IS OCCUPIED BY AN IMPROVEMENT (MANHOLE, BURIED CABLE, ETC.) ANY DURABLE, DISTINCT MONUMENT MAY BE USED. CORNERS SHALL BE REFERENCED WITH AT LEAST 4 DURABLE WITNESS MONUMENTS. WITNESS MONUMENTS SHALL BE MADE OF CONCRETE, NATURAL STONE, IRON OR OTHER EQUALLY DURABLE MATERIAL, EXCEPT WOOD. DESCRIBE THE CORNER AND THE WITNESS MONUMENTS.

CORNER CODE:  
R 21 (2)

(B) Describe any record evidence, monument evidence, original evidence, testimony evidence or any other evidence you considered, and whether the monument was found or placed.

1867 LOCKE VOL 1 PG 289. FOUND OLD STAKE IN CENTER OF HIGHWAY

1869 LEE VOL 1 PG 346. FOUND REMAINS OF OLD STAKE. SET OAK STAKE SURROUNDED BY 3 HARDHEADS. SHOWS A DISTANCE OF 2650.56' TO THE CENTER OF SECTION 13.

1880 LEE VOL 2 PG 314. CORNER LOST RANGE LINE BETWEEN SECTION CORNERS AND ESTABLISHED CORNER IN THIS LINE AND IN LINE OF FENCE EAST. SET LIMESTONE 10X5X6 ON TOP. SHOWS A DISTANCE OF 2642.64 TO THE SW CORNER OF SECTION 13.

1890 BLEEDORN VOL 2 PG 434. FOUND LIMESTONE SET BY LEE. SHOWS 2642.64 TO THE SW CORNER OF SECTION 13.

1919 BATTERMAN VOL 3 PG 91. FOUND LIMESTONE 10X6X5. REFERENCED SAME.

1959 BATTERMAN JR. VOL 3 PG 574 SHOWS REFERENCE TIES.

1975 SCHROEDER VOL 5 PG 60 SHOWS REFERENCE TIES.

1981 BARNES VOL 6 PG 225. FOUND BRASS DISK IN PAVEMENT. REFERENCED SAME.

1989 BARNES VOL 6 PG 395 FOUND BRASS PLUG. SHOWS COORDINATES OF N/S 233,045.82 E/W 2,260,769.68 AND DOT COORDINATES OF N/S 233,045.82 E/W 2,260,769.46. SHOWS THE FOLLOWING BEARINGS AND DISTANCES:

TO NW COR SEC 13	S00-49-52E	2646.74
	DOT	S89-51-31E 2651.60
SW COR SEC 13	N00-47-55W	2639.53

1992 BARNES L21(3) FOUND BRASS PLUG.

AFTER CONSTRUCTION I FOUND A DOT DISK IN CONCRETE INSIDE A ROUND MONUMENT BOX. DRILLED A HOLE AT INTERSECTION OF RECORD TIE DISTANCES.

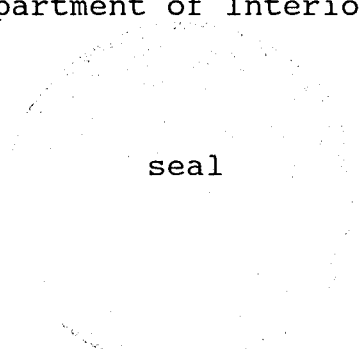
C) Was the corner restored through acceptance of (1) an obliterated evidence location, or, (2) a found perpetuated location?

ACCEPTED FOUND MONUMENT.

D) Describe any material discrepancy between the location of the corner as restored or reestablished and the location of that corner as previously restored or reestablished by distance and direction. Show the discrepancy on the plan view drawing under (a), above. Show the distances between the corner as previously restored or reestablished and (1) the corner as restored or reestablished, and (2) to at least 4 of the witness monuments shown on the drawing in (a), above.

(E) Was the corner reestablished through lost corner proportionate methods? If so, show the method, including the directions and distances to other public land survey corners used as evidence or used for proportioning the corner location.

I, Donald Barnes, hereby certify that the corner points as identified by the corner code index were, in a field survey on, ~~July 24, 1990~~ JAN 18, 1993, established, re-established, monumented, re-monumented, recovered or restored as expressed below and in conformance with the regulations and rules as required in the current manual of survey instructions of the United States Department of Interior, Bureau of Land Management.



seal

COUNTY SURVEYOR FILING DATA

Date of computer entry \_\_\_\_\_

Date microfilmed \_\_\_\_\_

Number of included sheets \_\_\_\_\_  
CORNER CODE

AFFIX YOUR LAND SURVEYOR SEAL

*Donald Barnes*

R21(2)