

Paper weight-110# (minimum)

Black nonfading ink required

U.S. PUBLIC LAND SURVEY MONUMENT RECORD

For Public Land Survey Corners In:
T. 2N. R. 12E. 4th P.M.
CORNER CODE INDEX

WI ADMINISTRATIVE CODE A-E 7.08 REQUIREMENT
REV 10/23/2004 USMONREC.DWG

A	1	2	3	4	5	6	7	8	9	10	11	12	13	14	15	16	17	18	19	20	21	22	23	24	25	A
B		6				5				4				3			2				1					B
C																										C
D																										D
E																										E
F																										F
G																										G
H																										H
J																										J
K																										K
L																										L
M																										M
N																										N
O																										O
P																										P
Q																										Q
R																										R
S																										S
T																										T
U																										U
V																										V
W																										W
X																										X
Y																										Y
Z																										Z

Rock TWP

ROCK COUNTY WI

IF AVAILABLE
ROCK COUNTY COORDINATES PREFERRED

North _____ Elev. _____

East _____

Hor. Datum _____ Vert. Datum _____

LATITUDE _____ ELLIPS. HT. _____

LONGITUDE _____

NAD83(91) _____ NETWORK ADJ. YR _____

GPS (X) _____ TRAVERSE (X) _____

BASED ON THE FOLLOWING CONTROL:

PLACE MONUMENT SYMBOL AT PROPER LOCATION ON ABOVE INDEX

CORNER MONUMENT

WITNESS MONUMENT

(a) BEARINGS ARE BASED ON: ROCK COUNTY PROJECTION

FIELD BOOK _____ PAGE # _____
OR OBSERVATION SHEET _____

SHEET 1 OF 2

SHOW A PLAN VIEW DRAWING DEPICTING THE CORNER MONUMENT AND SURROUNDING PHYSICAL FEATURES, INCLUDING THE EXCAVATION AREA AND DEPTH.

PLANNING & ZONING COMMITTEE ADOPTED THIS FORM ON 12/2/1982

CORNER CODE P-25(1)

(B) Describe any record evidence, monument evidence, occupational evidence, testimonial evidence or any other material evidence you considered, and whether the monument was found or placed. (B) Describe any record evidence, monument evidence, occupational evidence, testimonial evidence or any other material evidence you considered, and whether the monument was found or placed.

- 1833 MULLETT ORIGINAL GOVERNMENT SURVEYOR. FIELD NOTES © SET QUARTER SECTION POST IN MOUND. PIT BEARING SOUTH 3.3'. 693' TO THE NORTH WAS A ARMY TRAIL COURSE N.W.
- 1866 LOCKE VOL 1 PG 253 FOUND STAKE. SET LIMESTONE 24 X 11 X 5 SHOWS 2558.82 TO CENTER OF SECTION 19 LA PRAIRIE AND 2632.74 TO SW CORNER OF SECTION 19 LA PRAIRIE.
- 1936 SUNNY VOL 3 PG 295. FOUND 6X6 STONE MONUMENT 22" LOW. SET 1 1/2" IRON PIPE. CAPPED ON TOP. REFERENCED SAME.
- 1960 BATTERMAN VOL 4 PG 59. SHOWS REFERENCE TIES.
- 1989 BARNES VOL 6 PG 394. N/S 227,728.05;E/W 2,266,065.06 TOWNSHIP PROJECT N/S 227,729.13; E/W 2,266,064.93. SHOWS TO NE COR SEC 24

SO-59-27E	2627.24
RUGER 1871	2628.45
BARNES 1985	2627.23
SE COR SEC 24 SO-36-41E	2639.06
BARNES 1985	2639.02
- 1999 BARNES P-25 FD 1" PIPE IN MON BOX 0.5' BELOW PVMT SURFACE & 1" EAST OF PVMT CENTER. REFERENCED MON. TERRAIN INDICATES LARGE FILL AREA.

FD PK @ PVMT SURFACE & 0.9' DEEP FD PIPE IN MON BOX.

C) Was the corner restored through acceptance of (1) an obliterated evidence location, or, (2) a found perpetuated location?

ACCEPTED THE FD PIPE IN THE MON BOX.

D) Describe any material discrepancy between the location of the corner as restored or reestablished and the location of that corner as previously restored or reestablished by distance and direction. Show the discrepancy on the plan view drawing under (a), above. Show the distances between the corner as previously restored or reestablished and (1) the corner as restored or reestablished, and (2) to at least 4 of the witness monuments shown on the drawing in (a), above.

FD PK IS N9-23-41W 0.08' OF THE PIPE

(E) Was the corner reestablished through lost corner proportionate methods? If so, show the method, including the directions and distances to other public land survey corners used as evidence or used for proportioning the corner location.

I, Donald Barnes, hereby certify that the corner location as identified by the corner code index was determined by me under my direction and control and that this U.S. Public Land Survey Monument Record is correct and complete to the best of my knowledge and belief.

SEAL
ENCLOSURE

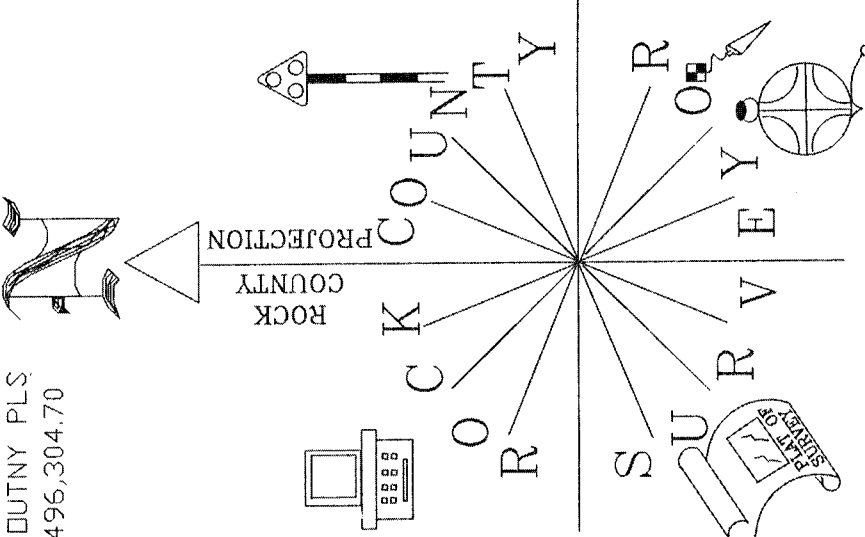
SHEET 1 OF 2

Donald Barnes
Sep 19, 2012

CORNER CODE P-25(1)

A.E. 7.08 REQUIREMENT

2012 COMBS PK N/S 246,392.00; E/W 496,304.70
 2012 BARNES READJUSTMENT OF COUNTY PLS
 PIPE N/S 246,392.00; E/W 496,304.70

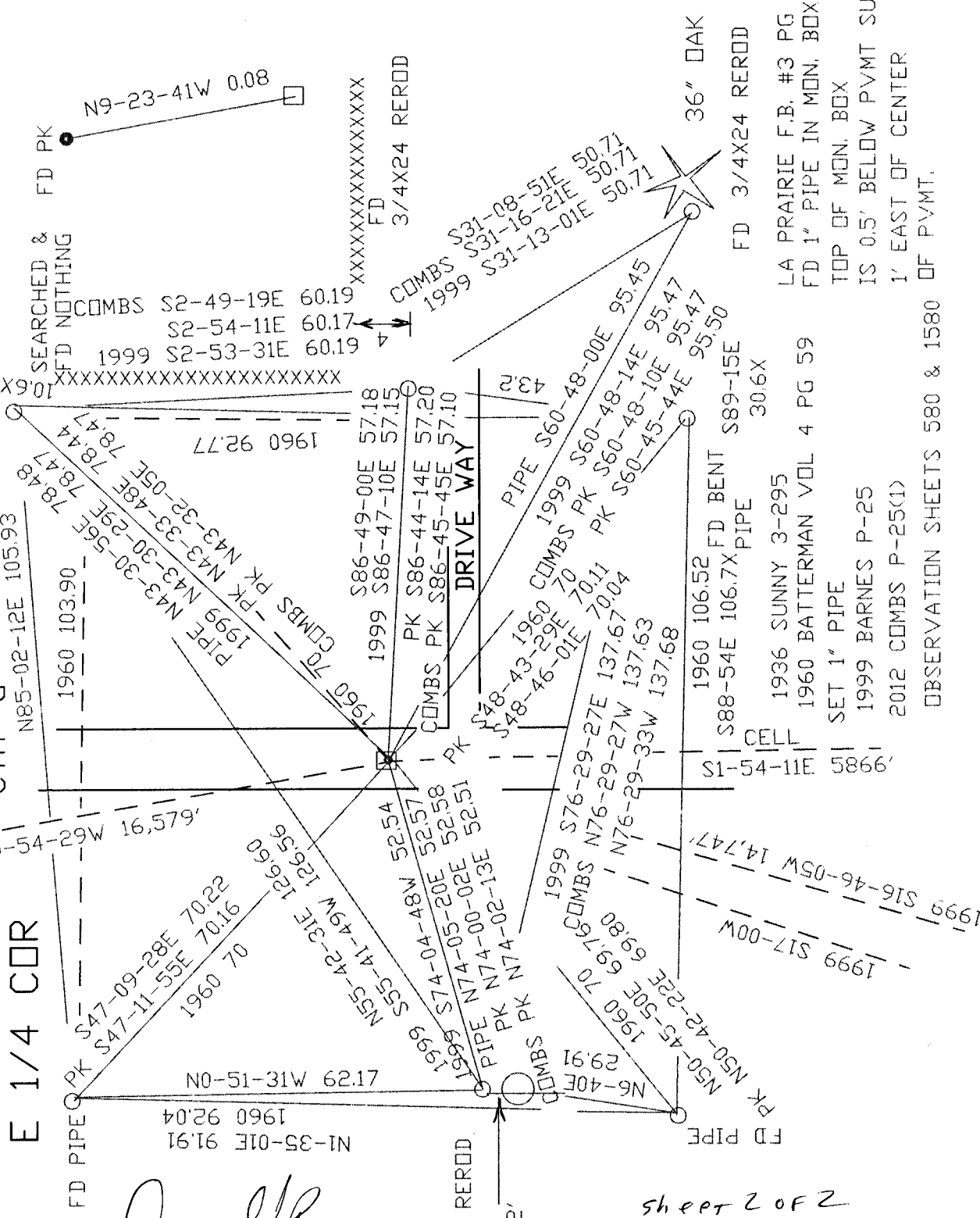


W 1/4 COR
 SEC 19
 LA PRAIRIE TWP

□ FD PIPE IN
 MON BOX
 0.9' DEEP

● FD PK @ PVMT
 SURFACE

GM STACK
ROCK TWP
SEC 24
E 1/4 COR



LA PRAIRIE F.B. #3 PG 62
 FD 1" PIPE IN MON. BOX
 TOP OF MON. BOX
 IS 0.5' BELOW PVMT SURFACE
 1' EAST OF CENTER
 OF PVMT.

1936 SUNNY 3-295
 1960 BATTERMAN VOL 4 PG 59
 SET 1" PIPE
 1999 BARNES P-25
 2012 COMBS P-25(1)
 OBSERVATION SHEETS 580 & 1580

WPL POWER STACKS

Arnold Barnes
 EMBOSSSED SEAL
 Sep 19, 2012

sheet 2 of 2

P-25(1)