

U.S. PUBLIC LAND SURVEY MONUMENT RECORD

For Public Land Survey Corners in:

WI ADMINISTRATIVE CODE A-E 7.08 REQUIREMENT

T. 2N., R. 12E

CORNER CODE INDEX

A	1	2	3	4	5	6	7	8	9	10	11	12	13	14	15	16	17	18	19	20	21	22	23	24	25
B																									
C	6																								
D																									
E																									
F																									
G	7																								
H																									
I																									
J																									
K	18																								
L																									
M																									
N																									
O																									
P	19																								
Q																									
R																									
S																									
T	30																								
U																									
V																									
W																									
X	31																								
Y																									
Z																									

ROCK TWP
ROCK COUNTY WI

IF AVAILABLE
ROCK COUNTY COORDINATES PREFERRED

North _____ Elev. _____

East _____

Hor. Datum _____ Vert. Datum _____

LATITUDE _____ ELLIPS. HT. _____

LONGITUDE _____

GPS (X) _____ TRAVERSE (X) _____

BASED ON THE FOLLOWING CONTROL:

PLACE MONUMENT SYMBOL AT PROPER LOCATION ON ABOVE INDEX

CORNER MONUMENT

WITNESS MONUMENT

(a)

BEARINGS ARE BASED ON:

FIELD BOOK _____ PAGE # _____

SHEET 1 OF 3

SHOW A PLAN VIEW DRAWING DEPICTING THE CORNER MONUMENT AND SURROUNDING PHYSICAL FEATURES, INCLUDING THE EXCAVATION AREA AND DEPTH.

PLANNING & ZONING COMMITTEE ADOPTED THE ABOVE FORM ON 12/2/1982

CORNER CODE L-21(5)

RD559
FD WIDOT DISK IN ROUND MONUMENT BOX & NE AND NW
REFERENCE MONUMENTS. THE 1990 TWP PROJECT OBSERVATIONS
AS ADJUSTED WITH OTHER TOWNSHIP PROJECTS PRODUCED THE
FOLLOWING:

N89-39-18W 2661.27 TO CENTER OF SEC 14
N0-11-44W 2646.76 TO NE COR SEC 14
S0-09-46E 2639.54 TO SE COR SEC 14
S89-00-10E 2651.54 TO CENTER OF SEC 13
N89-42-20W 5313.90 TO W 1/4 COR SEC 14
S88-52-17E 5219.16 TO E 1/4 COR SEC 13

C) Was the corner restored through acceptance of (1) an obliterated evidence location, or, (2) a found perpetuated location?

ACCEPTED FOUND MONUMENT.

D) Describe any material discrepancy between the location of the corner as restored or reestablished and the location of that corner as previously restored or reestablished by distance and direction. Show the discrepancy on the plan view drawing under (a), above. Show the distances between the corner as previously restored or reestablished and (1) the corner as restored or established, and (2) to at least 4 of the witness monument shown on the drawing in (a), above.

(E) Was the corner reestablished through lost corner proportionate methods? If so, show the method, including the directions and distances to other public land survey corners used as evidence or used for proportioning the corner location.

I, Donald Barnes, hereby certify that the corner location as identified by the corner code index was determined by me under my direction and control and that this U.S. Public Land Survey Monument Record is correct and complete to the best of my knowledge and belief.

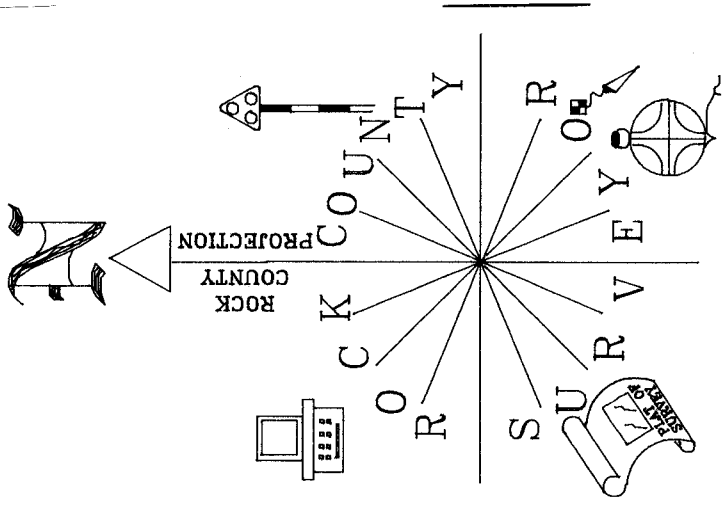
Seal
Donald Barnes
Emboss

8-14-02

SHEET 2 OF 3

CORNER CODE **L-21(5)**

A.E. 7.08 REQUIREMENT

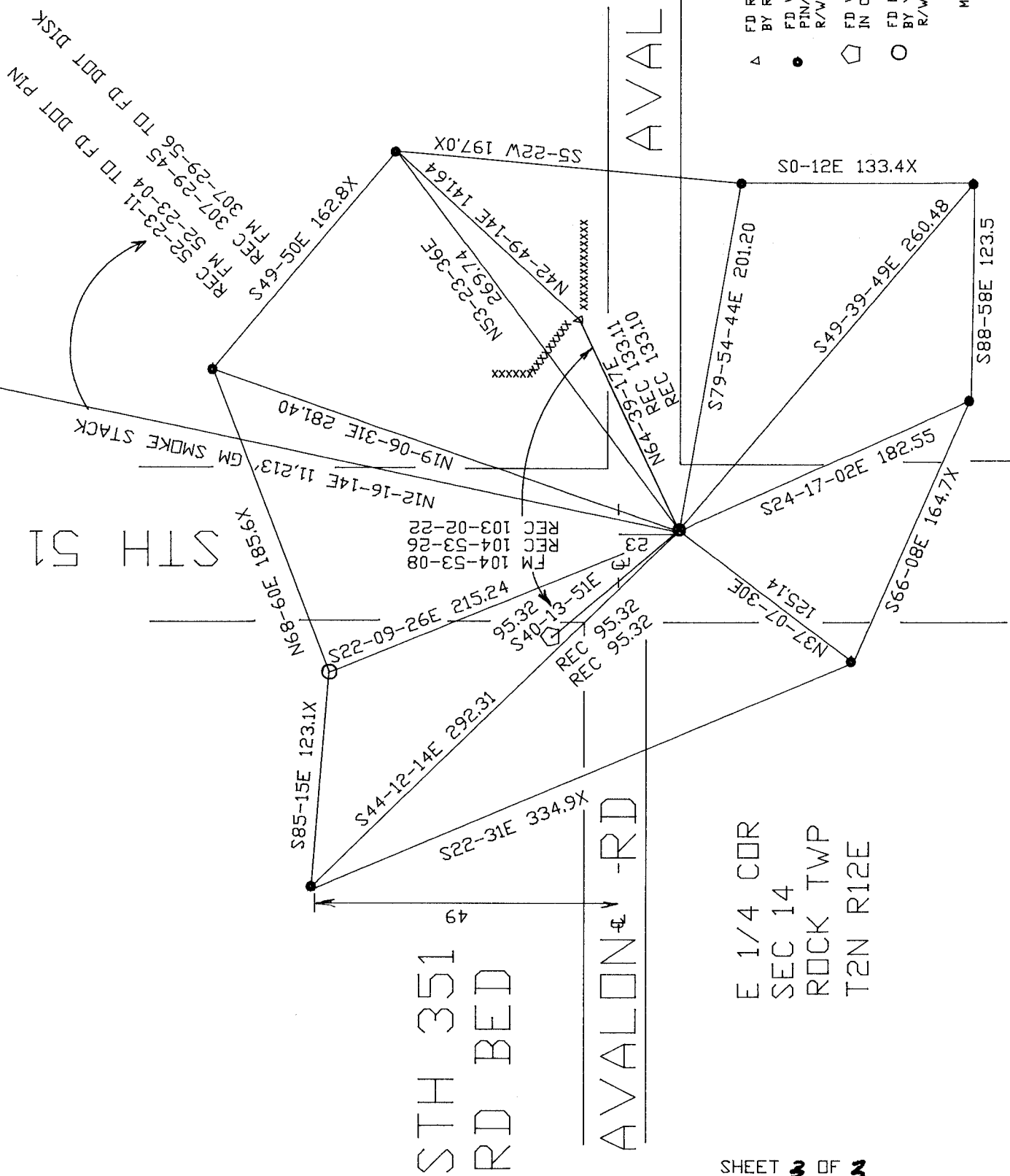


AVALON RD

AVALON RD

- NOT TO SCALE
OBSERVATION SHEET #559
- △ FD REC DOT PIN BY R/W SIGN POST
 - FD WIDDOT DISK IN ROUND MON. BOX E 1/4 COR
 - ◻ FD WIDDOT DISK IN CONCRETE
 - FD LARGE PIN BY YELLOW PLASTIC & 23" SOUTH OF THE CENTER OF PVMT PROJECTED FROM THE WEST.

MONUMENT WILL BE DESTROYED BY ROAD CONSTRUCTION



STH 51

REC 52-23-11 TO FD DOT PIN
FM 52-23-04 TO FD DOT DISK
REC 307-29-45 TO FD DOT DISK
FM 307-29-56 TO FD DOT DISK
REC 305-64
FM 307-29-45
REC 307-29-56

8-14-02
EMBOSSSED SEAL
Donald Barnes

SHEET 3 OF 3

L-21(5)