

U.S. PUBLIC LAND SURVEY MONUMENT RECORD

For Public Land Survey Corners In:

WI ADMINISTRATIVE CODE A-E 7.08 REQUIREMENT

T. 2N. R. 12E. 4th P.M.

REV 10/23/2004

USMONREC.DWG

CORNER CODE INDEX

Rock TWP

ROCK COUNTY WI

IF AVAILABLE

ROCK COUNTY COORDINATES PREFERRED

A	1	2	3	4	5	6	7	8	9	10	11	12	13	14	15	16	17	18	19	20	21	22	23	24	25	A
B		6				5				4					3					2					1	B
C																										C
D																										D
E																										E
F																										F
G																										G
H																										H
J																										J
K																										K
L																										L
M																										M
N																										N
O																										O
P																										P
Q																										Q
R																										R
S																										S
T																										T
U																										U
V																										V
W																										W
X																										X
Y																										Y
Z																										Z

North _____ Elev. _____

East _____

Hor. Datum _____ Vert. Datum _____

LATITUDE _____ ELLIPS. HT. _____

LONGITUDE _____

NAD83(91) _____ NETWORK ADJ. YR _____

GPS (X) _____ TRAVERSE (X) _____

BASED ON THE FOLLOWING CONTROL:

PLACE MONUMENT SYMBOL AT PROPER LOCATION ON ABOVE INDEX

CORNER MONUMENT

WITNESS MONUMENT

(a)

BEARINGS ARE BASED ON: _____

FIELD BOOK _____ PAGE # _____

SHEET 1 OF 3

SHOW A PLAN VIEW DRAWING DEPICTING THE CORNER MONUMENT AND SURROUNDING PHYSICAL FEATURES, INCLUDING THE EXCAVATION AREA AND DEPTH.

PLANNING & ZONING COMMITTEE ADOPTED THIS FORM ON 12/2/1982

CORNER CODE L-25(3)

R0560

(B) Describe any record evidence, monument evidence, occupational evidence, testimonial evidence or any other material evidence you considered, and whether the monument was found or placed.

- 1835 MULLETT ORIGINAL GOVERNMENT SURVEYOR. FIELD NOTES - SET QUARTER SECTION POST IN MOUND. PIT BEARING SOUTH 1.98'.
- 1869 LEE VOL 1 PG 346. FOUND POINT OF OLD STAKE. SET PIECE OF SCANTLING 1 1/2 X4 INCHES SURROUNDED BY 4 LIMESTONES.
- 1869 LEE VOL 2 PG 4. FOUND CORNER SET BY SELF. SHOWS A DISTANCE OF 2653.20 TO THE NE CORNER OF SECTION 13.
- 1871 RUGER LA PRAIRIE REMONUMENTATION FIELD NOTES. SOUTH ON WEST LINE NW 1/4 SECTION 18. ON A VAR 7-00 AT 2654.52 INTERSECTED 1/4 LINE 1.98' EAST OF 1/4 CORNER FOUND STAKE SURROUNDED BY 3 LIMESTONES AT CORNER. CORRECTED VAR 6-57. 2646.60 TO SW CORNER OF SECTION 18. PLACED CUT LIMESTONE.
- 1877 RUGER VOL 2 PG 237. SHOWS 2649.08 TO THE NE CORNER AND 2564.43 TO CENTER OF SEC 13.
- 1920 TAPPASS BK 10 PG 2 "MAPLEWOOD SUB" CORNER STONE. N84-30E 2480.14 TO CENTER OF SEC 18, S4-36E 1318.55 TO 1/16TH COR
- 1936 SUNNY VOL 3 PG 294 FOUND 6X6 CUT STONE MONUMENT 16" LOW. SET 1 1/2 X 16" IRON PIPE WITH CAP ON TOP. REFERENCED SAME.
- 1960 BATTERMAN JR. VOL 4 PG 60. REFERENCED SAME.
- 197? HURD VOL 5 PG 517 N/S 233,000.74; E/W 2,265,988.96
- 1978 COMBS CSM VOL 8 PG 54 FD MON BOX
- 1978 HURD VOL 5 PG 517 233,000.736; 2,265,988.96 E/W
- 1978 COMBS CSM VOL 8 PG 124 FD MON BOX
- 1980 BARNES L-23 FD PK @ CENTER OF PVMT. & REFERENCED SAME. STH 233,039.28; 2,263,421.05 PROJECT 5636-01-21
- 1982 COMBS CSM VOL 11 PG 121 FD MON. BOX
- 1985 BARNES L-1 REPLACED 1"X24" PIPE WITH POLY MON & REF. SAME. REFERENCED SAME. FD REC NE, SE, & SW REFERENCE PIPES. 233,000.50; 2,265,985.52. STH 233,000.00; 2,265,988.48. HURD 233,000.74; 2,265,988.96. ELEVATION 833.2
- 1986 DOT AFTER ROAD CONSTRUCTION, DOT PLACED CONCRETE MONUMENT IN MONUMENT BOX. FOUND CONCRETE MONUMENT IN ROUND MONUMENT BOX.
- 1987 DOT #11107 STH 351 ALUM 233,000.00; 2,265,988.48
- 1989 BARNES L-1 FD BERNTSEN MON & REFERENCED SAME. FD DOT PINS & INCLUDED IN REFERENCE MONUMENTS.
- 1989 THOM CSM VOL 13 PG 460 ALUM. MON ANGLE 89-38-15 @ NW COR SEC 18 FROM NORTH LINE SEC 18 TO W 1/4 COR SEC 18
- 1989 BARNES VOL 6 PG 395 N/S 232,999.61; E/W 2,265,988.72; DOT COORDINATES N/S 233,000.00; E/W 2,265,988.48 TOWNSHIP PROJECT N/S 233,000.50 E/W 2,265,988.52 SHOWS THE FOLLOWING DISTANCES AND BEARINGS TO NE COR SEC 13
- | | |
|---------------------------|---------|
| BARNES 1986 | 2653.41 |
| HURD 197? N00-46-29W | 2653.37 |
| CENTER SEC 13 S89-22-18E | 2567.60 |
| SE COR SEC 13 BARNES 1986 | 2644.82 |
| HURD 197? | 2644.40 |
| NO-40-15W | 2644.78 |
- 1990 BARNES L-25 ACCEPTED FOUND CONCRETE MON. IN MONUMENT BOX. & REF. SAME. 232,999.80; 2,265,988.52. HURD=233,000.74; 2,265,988.96. STH=233,000.00; 2,265,988.48 LA PRAIRIE TWP=233,000.50; 2,265,988.52. ELEVATION 833.2
- 1991 COMBS CSM VOL 15 PG 135 BRASS PLUG IN MON BOX 2644.70 TO SE COR SEC 13.
- 1992 LEE MAP #11242 & 1243 ANGLE 180-18-10 @ NW COR SEC 18 FROM W 1/4 COR SEC 7 TO W 1/4 COR SEC 18

SHEET 1 OF 3
L-25(3)

April 21 2005
Donald Barnes

RD560

- 1992 DIEBLES VOL 6 PG 424 THE FOLLOWING INFORMATION WAS PROVIDED BY TIM DIEBLES, DOT, DISTRICT 1. THIS INFORMATION APPLIES TO DOT CONSTRUCTION PROJECTS THAT OCCURRED IN THE LAST FIVE YEARS. STH 351 (AVALON RD.) PROJECT FROM CTH G TO I-90. PROJECT CONSULTANT INSTALLED SECTION AND QUARTER CORNER MONUMENTS FROM COUNTY SURVEYORS TIE SHEETS.
- 1994 SARKO #9743 MORTGAGE INSPECTION FD ALUM. MON. 5219.3 TO W 1/4 COR SEC 13
- 1997 HOEL #08591 ALUM MON 2653.34 TO NW COR SEC 18
- 1997 LATHROP CSM VOL 20 PG 329 DOT MON 2653.35 TO NW COR SEC 18
- 1998 ZHRINGER #08262 ALUM. ANGLE 89-38-40 @ NW COR SEC 18 FROM N 1/4 COR SEC 18 TO W 1/4 COR SEC 18
- 1998 COMBS CSM VOL 21 PG 461 ALUM. 2653.34 TO NW COR SEC 18 & ANGLE 89-38-40 @ NW COR SEC 18 FROM NORTH LINE SEC 18 TO W 1/4 COR SEC 18
- 1999 KNUDSON CSM VOL 22 PG 147 DOT MON. 2653.34 TO NW COR SEC 18 & ANGLE 89-38-40 @ NW COR SEC 18 FROM NORTH LINE SEC 18 TO W 1/4 COR SEC 1
- 1999 KNUDSON #07274 FD DOT MON. 2653.45 TO NW COR SEC 18. ANGLE 89-44-30 @ NW COR SEC 18 FROM N 1/4 COR SEC 7 TO W 1/4 COR SEC 18.
- 1999 STROBEL #7442 FD DOT MON
- 1999 LATHROP #7545 & 7546 FD BRASS CAP IN CONCRETE. ANGLE 88-35-50 FROM CENTER SEC 13 TO E 1/4 COR SEC 13, & ANGLE 180-18-25 @ NE COR SEC 13 FROM E 1/4 COR SEC 12 TO E 1/4 SEC 13.
- 1999 LATHROP CSM VOL 23 PG 73 DOT MON. 2653.31 TO NW COR SEC 18
- 1999 KNUDSON CSM VOL 22 PG 147 DOT MON. 2653.45 TO NW COR SEC 18 & ANGLE 180-18-35 FROM W 1/4 COR SEC 7 TO W 1/4 COR SEC 18
- 1999 LATHROP CSM VOL 23 PG 254 DOT MON. 2653.31 TO NW COR SEC 18
- 1999 COMBS #7374 FD DOT MON.
- 2001 COMBS MAP #14220 FD BRASS CAP. N88-41-40W 2567.60 TO GEN SEC 13 & N-05-50W ALONG SEC LINE
- 2001 DOT DISK IN CONC. N89-22-24W 2567.62 TO CENTER OF SEC 13.
- 2003 WIDOT L-25(1) DOT PROVIDED STATE PLANE WHICH, I CONVERTED TO COUNTY OF: 251,663.90; 496,287.07
- 2004 BARNES L-25(2) FOUND DOT DISK IN MONUMENT BOX & REFERENCE TIES.

COORDINATED WITH PROJECT ENGINEER IN INSTALLATION OF MONUMENT & REFERENCE MONUMENTS. DRILLED HOLE IN TOP OF DISK AND MEASURED TO OLD AND NEW WIDOT DISKS IN MONUMENTS. DRILLED HOLES IN REFERENCE MONUMENTS.

C) Was the corner restored through acceptance of (1) an obliterated evidence location, or, (2) a found perpetuated location?

ACCEPTED FOUND MONUMENT.

I, **Donald Barnes**, hereby certify that the corner location as identified by the corner code index was determined by me under my direction and control and that this U.S. Public Land Survey Monument Record is correct and complete to the best of my knowledge and belief.

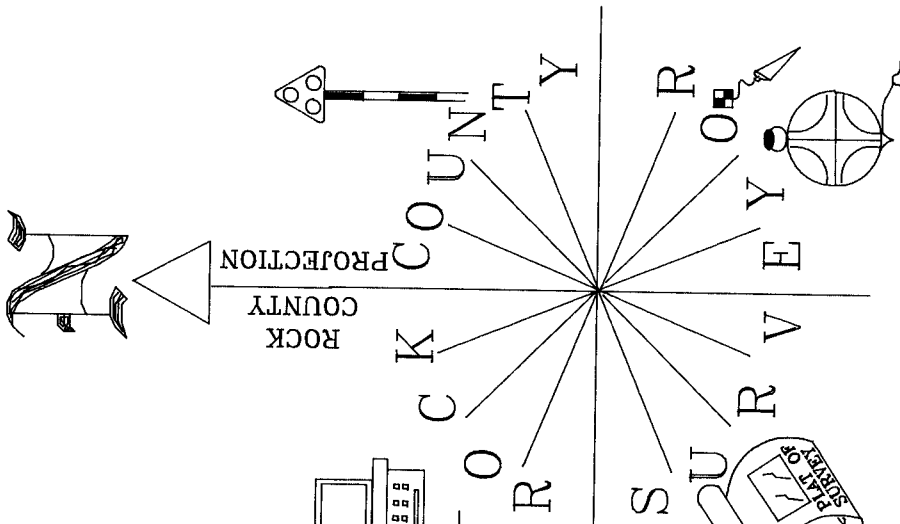
Seal

April 21 2005
Embloss
Donald Barnes

SHEET 2 OF 3

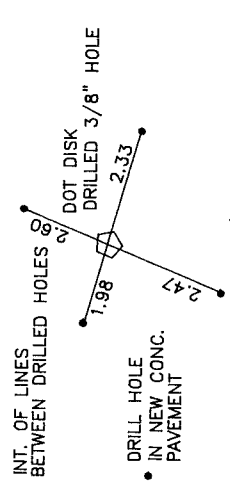
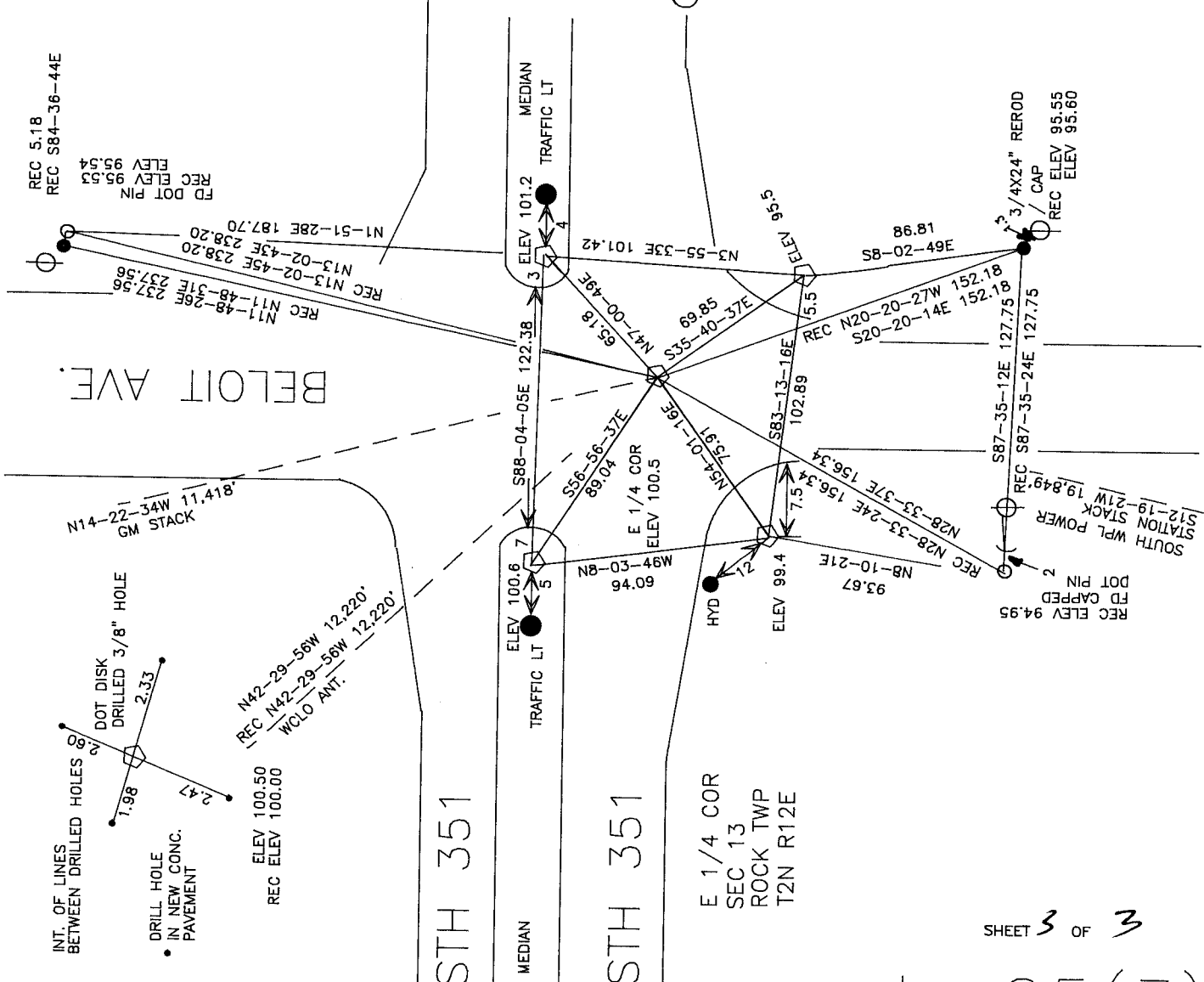
CORNER CODE **L-25(3)**

A.E. 7.08 REQUIREMENT



NOT TO SCALE

ASSUMED ELEVATION
OBSERVATION SHEETS #580R & 288R
MAJOR RECONSTRUCTION OF STH 351 & BELOIT AVE.



N42-29-56W 12,220'
REC N42-29-56W 12,220'
W/O ANT.

ELEV 100.50
REC ELEV 100.00

STH 351

STH 351

E 1/4 COR
SEC 13
ROCK TWP
T2N R12E

SHEET 3 OF 3

L-25(3)

APR 21
2005
[Handwritten Signature]

EMBOSSED SEAL