

# U.S. PUBLIC LAND SURVEY MONUMENT RECORD

For Public Land Survey Corners In:

WI ADMINISTRATIVE CODE A-E 7.08 REQUIREMENT

T. 2 N. R. 12 E. 4th P.M.

REV 10/23/2004

USMONREC.DWG

### CORNER CODE INDEX

|   |    |   |   |   |   |    |   |   |    |    |    |    |    |    |    |    |    |    |    |    |    |    |    |    |   |
|---|----|---|---|---|---|----|---|---|----|----|----|----|----|----|----|----|----|----|----|----|----|----|----|----|---|
| 1 | 2  | 3 | 4 | 5 | 6 | 7  | 8 | 9 | 10 | 11 | 12 | 13 | 14 | 15 | 16 | 17 | 18 | 19 | 20 | 21 | 22 | 23 | 24 | 25 |   |
| A |    |   |   |   |   |    |   |   |    |    |    |    |    |    |    |    |    |    |    |    |    |    |    |    | A |
| B | 6  |   |   |   |   | 5  |   |   |    |    | 4  |    |    |    | 3  |    |    |    |    | 2  |    |    |    | 1  | B |
| C |    |   |   |   |   |    |   |   |    |    |    |    |    |    |    |    |    |    |    |    |    |    |    |    | C |
| D |    |   |   |   |   |    |   |   |    |    |    |    |    |    |    |    |    |    |    |    |    |    |    |    | D |
| E |    |   |   |   |   |    |   |   |    |    |    |    |    |    |    |    |    |    |    |    |    |    |    |    | E |
| F |    |   |   |   |   |    |   |   |    |    |    |    |    |    |    |    |    |    |    |    |    |    |    |    | F |
| G | 7  |   |   |   |   | 8  |   |   |    |    | 9  |    |    |    | 10 |    |    |    |    | 11 |    |    |    | 12 | G |
| H |    |   |   |   |   |    |   |   |    |    |    |    |    |    |    |    |    |    |    |    |    |    |    |    | H |
| J |    |   |   |   |   |    |   |   |    |    |    |    |    |    |    |    |    |    |    |    |    |    |    |    | J |
| K |    |   |   |   |   |    |   |   |    |    |    |    |    |    |    |    |    |    |    |    |    |    |    |    | K |
| L | 18 |   |   |   |   | 17 |   |   |    |    | 16 |    |    |    | 15 |    |    |    |    | 14 |    |    |    | 13 | L |
| M |    |   |   |   |   |    |   |   |    |    |    |    |    |    |    |    |    |    |    |    |    |    |    |    | M |
| N |    |   |   |   |   |    |   |   |    |    |    |    |    |    |    |    |    |    |    |    |    |    |    |    | N |
| O |    |   |   |   |   |    |   |   |    |    |    |    |    |    |    |    |    |    |    |    |    |    |    |    | O |
| P | 19 |   |   |   |   | 20 |   |   |    |    | 21 |    |    |    | 22 |    |    |    |    | 23 |    |    |    | 24 | P |
| Q |    |   |   |   |   |    |   |   |    |    |    |    |    |    |    |    |    |    |    |    |    |    |    |    | Q |
| R |    |   |   |   |   |    |   |   |    |    |    |    |    |    |    |    |    |    |    |    |    |    |    |    | R |
| S |    |   |   |   |   |    |   |   |    |    |    |    |    |    |    |    |    |    |    |    |    |    |    |    | S |
| T | 30 |   |   |   |   | 29 |   |   |    |    | 28 |    |    |    | 27 |    |    |    |    | 26 |    |    |    | 25 | T |
| U |    |   |   |   |   |    |   |   |    |    |    |    |    |    |    |    |    |    |    |    |    |    |    |    | U |
| V |    |   |   |   |   |    |   |   |    |    |    |    |    |    |    |    |    |    |    |    |    |    |    |    | V |
| W |    |   |   |   |   |    |   |   |    |    |    |    |    |    |    |    |    |    |    |    |    |    |    |    | W |
| X | 31 |   |   |   |   | 32 |   |   |    |    | 33 |    |    |    | 34 |    |    |    |    | 35 |    |    |    | 36 | X |
| Y |    |   |   |   |   |    |   |   |    |    |    |    |    |    |    |    |    |    |    |    |    |    |    |    | Y |
| Z |    |   |   |   |   |    |   |   |    |    |    |    |    |    |    |    |    |    |    |    |    |    |    |    | Z |

Rock TWP

ROCK COUNTY WI

IF AVAILABLE  
ROCK COUNTY COORDINATES PREFERRED

North \_\_\_\_\_ Elev. \_\_\_\_\_

East \_\_\_\_\_

Hor. Datum \_\_\_\_\_ Vert. Datum \_\_\_\_\_

LATITUDE \_\_\_\_\_ ELLIPS. HT. \_\_\_\_\_

LONGITUDE \_\_\_\_\_

NAD83(91) \_\_\_\_\_ NETWORK ADJ. YR \_\_\_\_\_

GPS (X) \_\_\_\_\_ TRAVERSE (X) \_\_\_\_\_

BASED ON THE FOLLOWING CONTROL:

PLACE MONUMENT SYMBOL  AT PROPER LOCATION ON ABOVE INDEX

CORNER MONUMENT

WITNESS MONUMENT

(a)

BEARINGS ARE BASED ON:

FIELD BOOK \_\_\_\_\_ PAGE # \_\_\_\_\_

SHEET 1 OF 5

SHOW A PLAN VIEW DRAWING DEPICTING THE CORNER MONUMENT AND SURROUNDING PHYSICAL FEATURES, INCLUDING THE EXCAVATION AREA AND DEPTH.

PLANNING & ZONING COMMITTEE ADOPTED THIS FORM ON 12/2/1982

CORNER CODE 6-25(2)

R0540 E 1/4 SEC 12

(B) Describe any record evidence, monument evidence, occupational evidence, testimonial evidence or any other material evidence you considered, and whether the monument was found or placed.

- 1835 MULLETT ORIGINAL GOVERNMENT SURVEYOR. FIELD NOTES - SET QUARTER SECTION POST IN MOUND. PIT BEARING SOUTH 1.98'. MEASURED 2640' TO THE NE AND SE CORNERS OF SECTION 12.
- 1865 LOCKE VOL 1 PG 242 SHOWS A DISTANCE OF 2661.80 TO THE CENTER OF SECTION 7 LA PRAIRIE TOWNSHIP & 5092.56 TO E 1/4 COR SEC 7 & 2641.32 TO SE COR SEC 12.
- 1865 LOCKE & 2495 & 2496 2461.8 TO CENTER OF SEC 7 & 5092.56 TO E 1/4 COR SEC 7, 2641.32 TO SW COR SEC 7.
- 1865 LOCKE #2494 FD OLD STAKE. SET STAKE SURROUNDED BY 4 STONES (HARDHEADS) 2641.98 TO THE SE COR SEC 12.
- 1870 RUGER VOL 2 PG 23 FOUND OLD STAKE. SET LIMESTONE.
- 1871 RUGER LA PRAIRIE TOWNSHIP REMONUMENTATION. FIELD NOTES - SOUTH ON WEST LINE OF NW 1/4 OF SEC 7 ON A VAR 7-00' AT 2649.57 INTERSECTED 1/4 LINE AT 1/4 CORNER FOUND STAKE SURROUNDED BY HARDHEAD STONES AT CORNER.  
SOUTH ON WEST LINE OF SW 1/4 OF SEC 7 ON A VAR 6-57
- 2647.26 INTERSECTED SOUTH BOUNDARY LINE 1.65' EAST OF COR. FD STAKE SURROUNDED BY 3 LIMESTONES AT COR. COR VAR 6-55.  
PLACED CUT LIMESTONE.
- 1884 RUGER VOL 2 PG 376 & #2497 SHOWS A DISTANCE OF 391.71 TO THE R/R TRACKS THAT ARE NORTH OF THE CORNER. ALSO SHOWS 1300.86 TO THE E 1/16TH CORNER OF THE NE 1/4 OF SECTION 12. 391.38' SOUTH OF N.E. LINE OF C & N.W. R.C. RIGHT OF WAY
- 1907 RUGER #7145 NORTHERLY 227.37 TO SOUTH R/R ROW. STATES NOTHING ABOUT MON.
- 1936 SUNNY VOL 3 PG 294 FOUND LIMESTONE MONUMENT 10" LOW. SET 1 1/2" X 10" IRON PIPE WITH CAP ON TOP. REFERENCED SAME. {TIES: SPIKE IN P.O & 36" MAPLE, 2 CUT CROSSES IN SIDEWALK}
- 1936 SUNNY VOL 3 PG 318 FOUND STONE MONUMENT.
- 1937 SUNNY VOL 3 PG 329 FOUND 2" PIPE.
- 1938 SUNNY VOL 3 PG 383 SHOWS A DISTANCE OF 2651.60 TO THE NW CORNER OF SECTION 7 LA PRAIRIE TOWNSHIP.
- 1938 SUNNY #5978 FD 2" PIPE MON. N4-40W (MAGNETIC BEARING) 2651.60 TO THE NW COR SEC 7.
- 1944 SUNNY #??? ANGLE 91-30 AT CENTER OF SEC 12 FROM N 1/4 COR SEC 12 TO E 1/4 COR SEC 12. STATES NOTHING ABOUT E 1/4 COR SEC 12.
- 1953 SUNNY #???? 2" PIPE
- 1958 SHIMEALL #3937 PIPE AT E 1/4 COR SEC 12. ANGLE 88-30 @ E 1/4 COR SEC 12 FROM E/W 1/4 LINE SEC 12 TO EAST LINE NE 1/4 SEC 12. PIPE @ E 1/4 COR OF SEC 12 (DESCRIPTION CALLS FOR IRON PIN)
- 1959 BATTERMAN #3899 LOCATION OF ORIGINAL STONE. FD 1" PIPE 0.76' W & 0.61S OF EAST 1/4 COR. 2557.52 TO FD 1" PIPE @ CENTER OF SEC 12. ALSO STATES NOTHING ABOUT MONUMENT.
- 1960 BATTERMAN JR. VOL 4 PG 60 SHOWS REFERENCES. DOES NOT SHOW ANY OF SUNNY'S TIES. IN BELOIT RECORD "MON BOX OVER 1" PIPE" IN DIFFERENT STYLE OF PRINTING THAT WAS USED FOR TIE DISTANCES. DISTANCE TO SW REFERENCE PIPE IS 54.79 WITH A LINE THRU 53.75.
- 1961 KNOERR BK 21 PG 8 "SUNDOWN ACRES". GOOD PLAT TO RELOCATE SEC COR. ANGLE 91-28 @ E 1/4 COR SEC 12 FROM SE COR TO CENTER OF SEC 12. E 1/4 COR SEC 12 IS 0.75'

SHEET 1 OF 5

G-25(2)

Donald Barnes

April 22 2005

RO540

NORTH OF CENTER OF KELLOGG AVE. STATES NOTHING ABOUT MON.

- 1962 BATTERMAN VOL 4 PG 122 SHOWS 2649.98 TO THE NE CORNER OF SECTION 12.
- 1965 KNOERR BK 22 PG 34 "SECOND SUNDOWN ACRES" STATES NOTHING ABOUT MON.
- 1968 THOM#2490 PIPE. EAST 40.00 TO 1" PIPE. ANGLE 90-41-18 @ W 1/4 COR SEC 7 FROM WEST LINE SEC 7 TO E/W 1/4 LINE SEC 7 & ANGLE 89-21-22 @ W 1/4 COR SEC 7 FROM E/W 1/4 LINE SEC 7 TO WEST LINE SEC 18
- 1969 BEATY CSM VOL1 PG 219 STATES NOTHING ABOUT MON.
- 1971 SHARKY #??? MON BOX EAST 1136.00 TO 1/16<sup>TH</sup> COR.
- 1971 COMBS #2491 FD PIPE IN MON BOX AT THE W 1/4 COR SEC 7. ANGLE 90-42 @ W 1/4 COR SEC 7 FROM NORTH TO CENTER OF SEC 7.
- 1974 COMBS CSM VOL 4 PG 106 STATES NOTHING ABOUT MON.
- 1974 LEE #??? FD PIPE IN MON BOX EAST 1136.13 TO 1/16<sup>TH</sup> COR & 2456.49 TO CENTER OF SEC 7
- 1975 COMBS CSM VOL 4 PG 351 FD MON. BOX. CALLS FOR DEED "1339.66" TO THE WEST.
- 1976 LEE CSM VOL 6 PG 35 FD MON. BOX.
- 1977 COMBS #3936 STATES NOTHING ABOUT MON.
- 1980 COMBS #3944 FD MON. BOX 566.16 TO THE NORTH R/W LINE OF C&N.W. RR
- 1981 COMBS #12994 MORTGAGE INSPECTION STATES NOTHING ABOUT MON.
- 1981 LEUEMBERGER #3951 FD MON. BOX EAST 1136.00 TO 1/16<sup>TH</sup> COR
- 1982 COMBS #3953 FD PIPE IN MON BOX
- 1983 COMBS #13057 MORTGAGE INSPECTION STATES NOTHING ABOUT MON.
- 1984 COMBS CSM VOL 11 PG 606 FD PIPE IN MON. BOX
- 1985 COMBS VOL 12 PG 267 FD PIPE IN MON. BOX
- 1985 BARNES G-1 - JUNE 18 FD 1" IRON PIPE IN MON BOX AND 2 1/2' DEEP FD ANOTHER PIPE. CORNER WILL BE DESTROYED BY ROAD CONSTRUCTION. REFERENCED BOTH PIPES. FD NW REFERENCE PIPE & DISTURBED SW REFERENCE PIPE. RESET SW REFERENCE PIPE. THE FD TOP AND 2 1/2 DEEP PIPE ARE BOTH .05 DIFFERENT FROM THE RECORD DISTANCE TO THE FD NW REFERENCE PIPE. THERE IS A DIFFERENCE OF 0.14 BETWEEN THE TOP PIPE AND THE RECORD TO THE SW REFERENCE PIPE, WHICH WAS REPLACED. THE DIFFERENCE BETWEEN THE 2 1/2 DEEP PIPE AND THE SW REFERENCE PIPE IS 0.34 WHICH IS LARGER. THE NE & SE REFERENCE PIPES ARE DESTROYED. [LA PRAIRIE TWP FB #2 PG 59]
- 1985 ?? ANGLE 90-43-30 @ W 1/4 COR SEC 7 FROM NW COR SEC 7 TO E/W 1/4 LINE SEC 7
- 1985 DOT G-1(1) MEASURED BY JRJ, JSF 7/3/85. RESET 10/01/85 JRS, DJ. SET MON BOX WITH DISK IN CONC. WITH TYPE "A" CONCRETE IN PLACE WITH ALUM. DISK.
- 1985 BARNES - NOV 4 FIELD NOTES FOR LA PRAIRIE TWP REMONUMENTATION PROJECT. FD BRASS DISK IN PVMT. ELEV 839.9.
- 1986 COMBS #13956 JACKSON PARK (UNRECORDED) STATES NOTHING ABOUT MON.
- 1989 BARNES MARCH 26-ROCK TWP PROJECT W 1/4 COR SEC 12 OBSERVATION SHEET. FD DISK IN ROUND MONUMENT BOX AT E 1/4 COR SEC 12.
- 1990 COMBS #12079 MON BOX 2649.98 TO NW COR SEC 7 (1325.02-1324.96)
- 1990 BARNES G-25 FOUND DISK/CONCRETE IN ROUND MONUMENT BOX THAT DOT PLACED AFTER 1985 ROAD CONSTRUCTION. REFERENCE DOT ALUM DISK IN CONCRETE PLACED PER PROJ #5990-02-22 ALSO MEASUREMENTS ARE BY THE PROJECT ENGINEER. ELEV 839.9

SHEET 2 OF 5  
G-25(1)

*Derald Barnes*

*APRIL 22 2005*

RO540

- 1991 BARNES E-23 CALLS FOR N88-59-14W 2557.83 TO CENTER OF SEC 12, S00-26-30E 2646.29 TO SE COR SEC 12, & N00-29-17W 2650.05 TO NE COR SEC 12.
- 1992 BERRINKOT #10300 FD ALUM. 2557.89 TO CENTER OF SEC 12.
- 1993 COMBS CSM VOL 17 PG 107 STATES NOTHING ABOUT MON. 2556.89 TO CENTER OF SEC 12
- 1994 COMBS #9855 SECTION CORNER LOCATED PER CLAYTON SHIMEALL'S SURVEY DATED APRIL & MAY 1958. S50-21W 1.0' FROM MON BOX. ANGLE 88-29-50 AT SHIMEALL'S POSITION FROM E/W ¼ LINE SEC 12 TO NE COR SEC 12
- 1994 LATHROP GSM VOL 17 PG 318 IP IN MON. BOX
- 1996 BORCHERDING #9178 & 5938 FD MON. ANGLE 91-26-57 @ E ¼ COR SEC 12 FROM THE EAST LINE OF THE SE ¼ SEC 12 TO E/W CENTER LINE OF SEC 12
- 1997 LATHROP GSM VOL 20 PG 137 IP IN MON. BOX 2646.13 TO PK @ SE COR SEC 12.
- 1997 LATHROP BK32 PG 368 " SUNDOWN REPLAT" 1" PIPE IN MON. BOX.
- 1998 KREBS #8201 WIDOT MON IN MON. BOX 2650.02 TO (DOT MON IN MON. BOX) NW COR SEC 7
- 1998 CHAPUT #8210 FD CONC. MON. 2649.95 TO NW COR SEC 7
- 1999 KNUDSON #7274&7276 FD ALUM 2646.22 TO SW COR SEC 7 (SET PK)
- 2002 KUBICEK #14359 & 14360 BRASS CAPPED MON IN HAND HOLE. 2646.95 TO NW COR SEC 7
- 2004 BARNES G-25(1) FD DOT DISK IN ROUND MON. BOX. DISK THAT WAS PLACED BY WIDOT IN 10/01/1985. FD 2 WIDOT REFERENCE DISKS IN CONCRETE & MY TWO OLD ½ REFERENCE RERODS.

MEASURED TO OLD REFERENCE MONUMENTS AND NEW WIDOT DISKS IN CONCRETE. DRILLED HOLES IN FD WIDOT DISKS IN CONCRETE. AT THE SECTION CORNER FOUND ROUND MONUMENT BOX WITH DISK IN CONCRETE. DRILLED HOLE IN DISK AT THE LOCATION OF THE OLD DISK. ON SW EDGE OF CONCRETE, I PLACED A 3/4X24" REROD, WHICH IS THE OLD LOCATION OF THE OLD 2 ½' DEEP FD PIPE IN 1985 BY ME {G-1}. THE CONCRETE/DISK DID NOT SEEM VERY STABLE. IT MOVED WHEN I PLACED THE REROD.

C) Was the corner restored through acceptance of (1) an obliterated evidence location, or, (2) a found perpetuated location?

BASED ON RECORD INFORMATION, I AM ACCEPTING THE 2 ½ DEEP PIPE THAT I FOUND IN 1985 (G-1 - JUNE 18), WHICH I BELIEVE IS THE LOCATION OF THE PIPE THAT SUNNY PLACED OVER THE CUT LIMESTONE.

D) Describe any material discrepancy between the location of the corner as restored or reestablished and the location of that corner as previously restored or reestablished by distance and direction. Show the discrepancy on the plan view drawing under (a), above. Show the distances between the corner as previously restored or reestablished and (1) the corner as restored or reestablished, and (2) to at least 4 of the witness monuments shown on the drawing in (a), above.

THERE ARE AT LEAST THREE DIFFERENT RECORD POSITIONS: 1) THE PIPE AT TOP OF GRADE IN THE OLD MONUMENT BOX (CORNER #1540), 2) THE 2 ½ DEEP PIPE (CORNER #2540) IN THE OLD MONUMENT BOX, 3) THE WIDOT DISK (#540) IN THE NEW MONUMENT BOX AND, 4) THE LOCATION AS DETERMINED BY SHIMEALL (CORNER #3540) IN 1958.

IN 1959, BATTERMAN'S SURVEY MAP #3899 FD A 1" PIPE 0.76 W & 0.61 S OF CORNER. ALSO COMBS'S 1994 SURVEY MAP #9855 CALLS FOR SHIMEALL'S LOCATION AS S50-21W 1.0 OF THE FD DOT SHEET 3 OF 5 G-25(2)

Donald Barnes  
Apr 22 2005

R0540

DISK. THIS IS A 1.0 DISCREPANCY. IN BOTH THE 1985 LA PRAIRIE TWP PROJECT & THE 1989 ROCK TWP PROJECT, I USED THE WIDOT DISK FOR ALL OBSERVATIONS. IN THE DRAWING THE NUMBER 3540 REPRESENTS SHIMEALL'S POSITION BY USING BATTERMAN'S 1959 FD PIPE AND BY USING THEIR STATED N/S & E/W DIFFERENCE IN POSITION. THE RECORDS INDICATES THE 2" CAPPED PIPE THAT SUNNY PLACED ON TOP OF THE CUT STONE WAS LAST REFERRED TO IN 1953. IN 1960 BATTERMAN STATES A 1" PIPE IN A MON. BOX. IN 1968 THOM REFERS TO A 1" PIPE. THE TOP 1" PIPE THAT I FOUND FITS HIS FD EASTERLY 40.00 PIPE. I BELIEVE THE TOP 1" PIPE THAT I FOUND IN 1985 WAS USED BY THOM. BASED ON THE DISTANCES AND ANGLES, I BELIEVE THE (#2540) PIPE I FOUND 2 1/2' DEEP IS THE PIPE THAT BATTERMAN USED IN 1959. SINCE HE CALLS FOR THIS AS THE POSITION OF THE ORIGINAL STONE I BELIEVE THIS PERPETUATES THE CUT STONE. THE PIPE SHOWN ON SHIMEALL'S 1958 SURVEY IS PROBABLY THE PIPE THAT BATTERMAN IS REFERRING TO. SHIMEALL'S LOCATION AS COMB'S CALLS FOR IN HIS 1994 SURVEY IS IN HARMONY WITH SHIMEALL'S RECORD DISTANCES AND ANGLES.

I BELIEVE THE DOT DISK DOES NOT REPRESENT THE LOCATION OF PREVIOUS FD MON. THE DISTANCE FROM THE COMPUTED TOP IP IS THE EXACT DISTANCE DOT CALLS FOR TO THEIR NE REFERENCE DISK AND WITHIN A 0.01TH TO THEIR EASTERLY REFERENCE DISK. SINCE I WAS NOT ABLE TO FIND THEIR SOUTHEASTERLY REFERENCE DISK I WAS UNABLE TO DETERMINE A THIRD CHECK.

*(E) Was the corner reestablished through lost corner proportionate methods? If so, show the method, including the directions and distances to other public land survey corners used as evidence or used for proportioning the corner location.*

I, Donald Barnes, hereby certify that the corner location as identified by the corner code index was determined by me under my direction and control and that this U.S. Public Land Survey Monument Record is correct and complete to the best of my knowledge and belief.

*Donald Barnes*  
Seal

Emboss

*April 22 2005*

SHEET 4 OF 5

CORNER CODE

**G-25(2)**

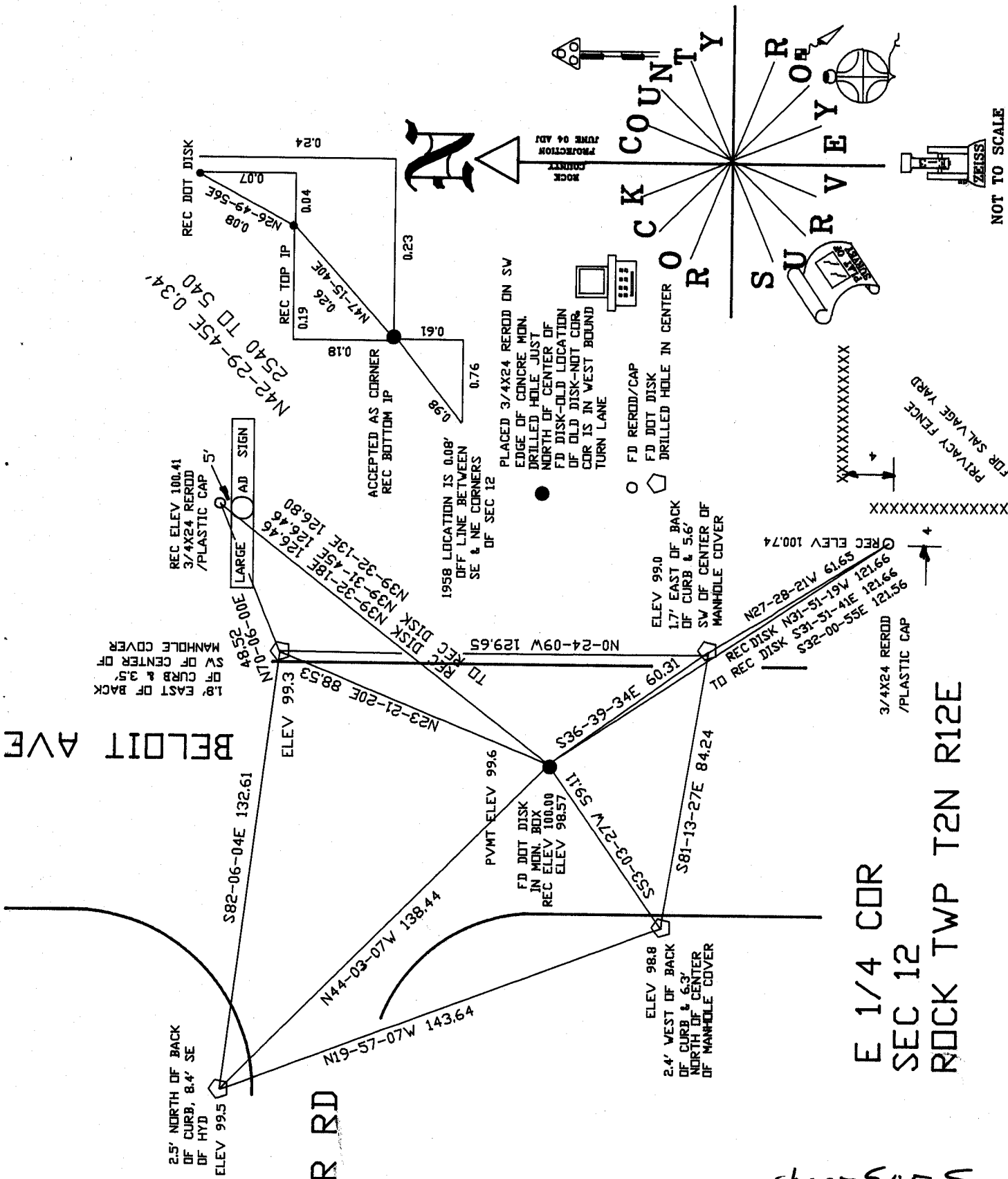
A.E. 7.08 REQUIREMENT

EMBOSSED SEAL

APR 16 22 2005  
Donald Beanes

REUTHER RD

BELOIT AVE



E 1/4 COR  
SEC 12  
ROCK TWP T2N R12E

sheet 5 of 5

OBSERVATION SHEET  
ROCK TWP

G-25(2)

NOT TO SCALE  
OBSERVATION SHEET #540