

Paper weight-110# (minimum)

Black nonfading ink required

# U.S. PUBLIC LAND SURVEY MONUMENT RECORD

For Public Land Survey Corners In:  
T. 4 N. R. 10 E. 4th P.M.  
CORNER CODE INDEX

WI ADMINISTRATIVE CODE A-E 7.08 REQUIREMENT  
REV 10/23/2004 USMONREC.DWG

UNION TWP  
ROCK COUNTY WI

IF AVAILABLE  
ROCK COUNTY COORDINATES PREFERRED

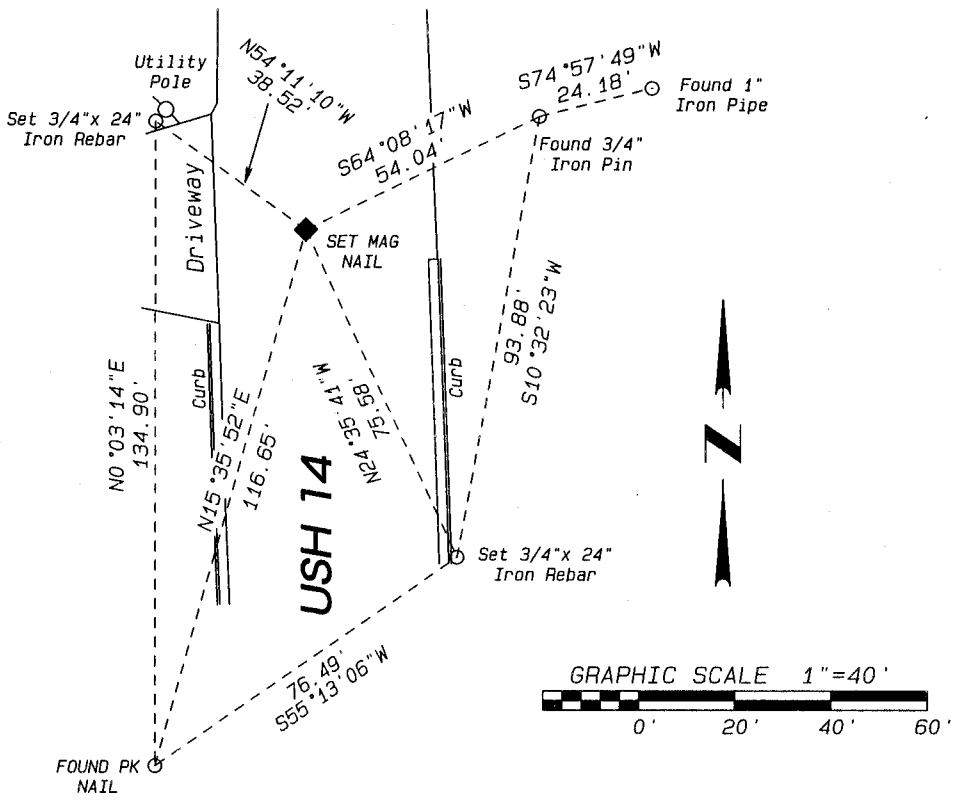
North \_\_\_\_\_ Elev. \_\_\_\_\_  
East \_\_\_\_\_  
Hor. Datum \_\_\_\_\_ Vert. Datum \_\_\_\_\_  
LATITUDE \_\_\_\_\_ ELLIPS. HT. \_\_\_\_\_  
LONGITUDE \_\_\_\_\_  
NAD83(91) \_\_\_\_\_ NETWORK ADJ. YR \_\_\_\_\_  
GPS (X) \_\_\_\_\_ TRAVERSE (X) \_\_\_\_\_  
BASED ON THE FOLLOWING CONTROL:

1	2	3	4	5	6	7	8	9	10	11	12	13	14	15	16	17	18	19	20	21	22	23	24	25	
A																									A
B																									B
C	6																								C
D																									D
E																									E
F																									F
G	7																								G
H																									H
J																									J
K																									K
L	18																								L
M																									M
N																									N
O																									O
P	19																								P
Q																									Q
R																									R
S	30																								S
T																									T
U																									U
V																									V
W																									W
X	31																								X
Y																									Y
Z																									Z

PLACE MONUMENT SYMBOL  $\blacklozenge$  AT PROPER LOCATION ON ABOVE INDEX

$\blacklozenge$  CORNER MONUMENT       $\circ$  WITNESS MONUMENT

(a)  
BEARINGS ARE BASED ON: Assumed Datum.  
Assumed N0°29'54"W along the North-South Centerline  
of Section 27-4-10.



FIELD BOOK \_\_\_\_\_ PAGE # \_\_\_\_\_ SHEET 1 OF 2

SHOW A PLAN VIEW DRAWING DEPICTING THE CORNER MONUMENT AND SURROUNDING PHYSICAL FEATURES, INCLUDING THE EXCAVATION AREA AND DEPTH.

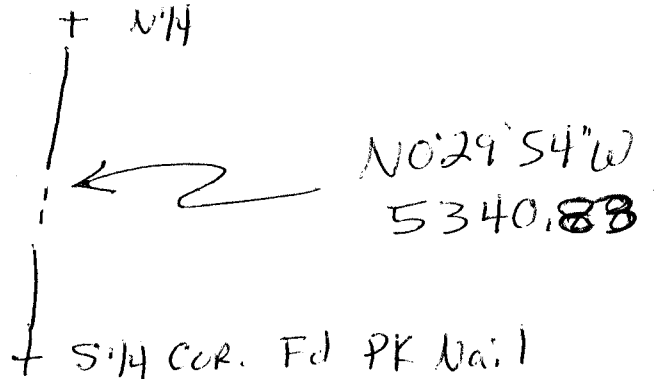
PLANNING & ZONING COMMITTEE ADOPTED THIS FORM ON 12/2/1982

CORNER CODE R-15 (4)

(B) Describe any record evidence, monument evidence, occupational evidence, testimonial evidence or any other material evidence you considered, and whether the monument was found or placed.

Fd. 2 reference monuments. Used these to set Mag. Nail at Section Corner. It's location checked within reason to preliminary Rock County Coord. Value.

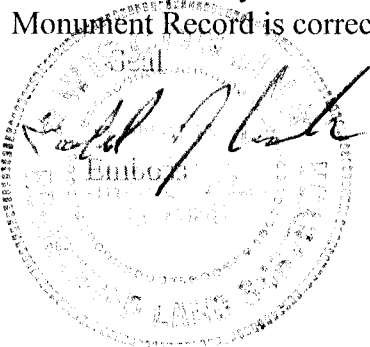
(C) Was the corner restored through acceptance of (1) an obliterated evidence location, or, (2) a found perpetuated location?



(D) Describe any material discrepancy between the location of the corner as restored or reestablished and the location of that corner as previously restored or reestablished by distance and direction. Show the discrepancy on the plan view drawing under (a), above. Show the distances between the corner as previously restored or reestablished and (1) the corner as restored or reestablished, and (2) to at least 4 of the witness monuments shown on the drawing in (a), above.

(E) Was the corner reestablished through lost corner proportionate methods? If so, show the method, including the directions and distances to other public land survey corners used as evidence or used for proportioning the corner location.

I, Ronald J. Combs, hereby certify that the corner location as identified by the corner code index was determined by me under my direction and control and that this U.S. Public Land Survey Monument Record is correct and complete to the best of my knowledge and belief.



SHEET 2 OF 2

Sept. 24, 2010

CORNER CODE

A.E. 7.08 REQUIREMENT

R-15