

U.S. PUBLIC LAND SURVEY MONUMENT RECORD

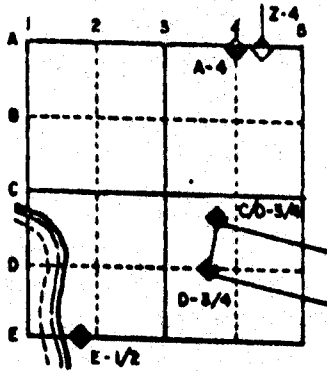
For Public Land Survey Corners in the
T. 2 N., R. 12 E.

CORNER CODE INDEX

	1	2	3	4	5	6	7	8	9	10	11	12	13	14	15	16	17	18	19	20	21	22	23	24	25
A																									
B																									
C																									
D																									
E																									
F																									
G																									
H																									
I																									
J																									
K																									
L																									
M																									
N																									
O																									
P																									
Q																									
R																									
S																									
T																									
U																									
V																									
W																									
X																									
Y																									
Z																									

PLACE MONUMENT SYMBOL (◆) AT PROPER LOCATION ON ABOVE INDEX

EXAMPLE



Rock TWP
ROCK COUNTY WI

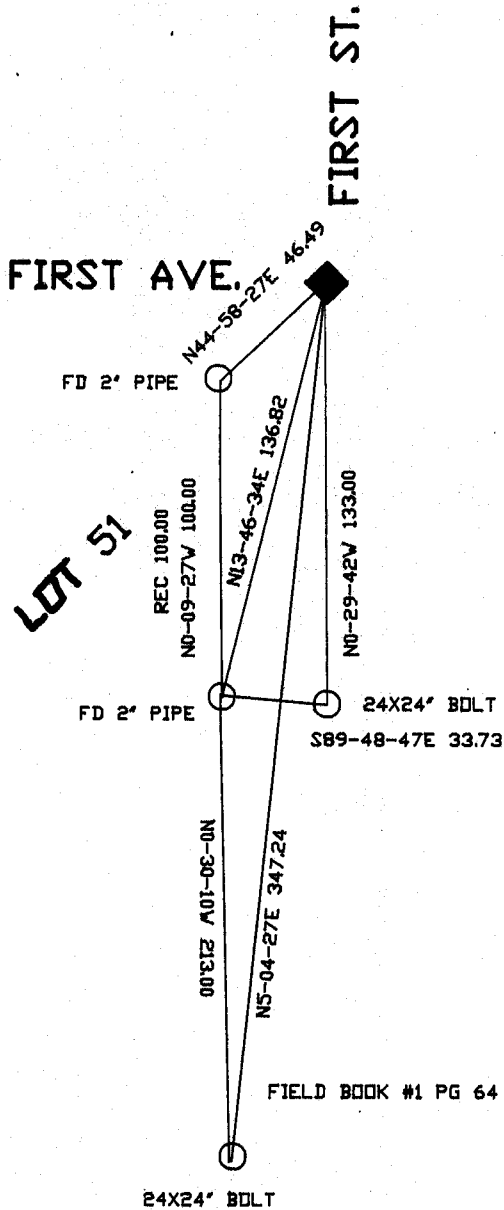
IF AVAILABLE
STATE PLANE COORDINATES

North (Y) _____ Eleve. (Z) _____
East (X) _____ Zone _____
Hor. Datum _____ Vert. Datum _____

◆ CORNER MONUMENT

○ WITNESS MONUMENT

BEARINGS ARE BASED ON: Rock Twp Project



MICROFILMED

SHEET ___ OF ___

CORNER CODE: v 21

(B) Describe any record evidence, monument evidence, occupational evidence, testimonial evidence or any other material evidence you considered, and whether the monument was found or placed.

- 1836 ORSON LYON SET POST CORNER TO SECTIONS 25,26,35, & 36.
BLACK OAK 14 N41 1/2E 9.9', WHITE OAK 12 N39W 21.78'
- 1873 LEE VOL 2 PG 95 FOUND STUMPS OF B.T.s & HOLLOW IN GROUND & PUT CORNER.
- 1956 SHIMEALL BAXTER VALLEY SECOND ADDITION BK 18 PG 12. STATES THAT HE FOUND A STONE AT THE CORNER.
- 1957 SHIMEALL PLAT OF SURVEY. FOUND PIN SURROUNDED BY STONES AT THE S 1/6th CORNER OF THE SE 1/4 OF SECTION 26. SHOWS A DISTANCE OF 1319.33 TO THE SE CORNER OF SECTION 26. STATES NOTHING ABOUT THE SECTION CORNER.
- 1981 BARNES PLAT OF SURVEY. FOUND 2" PIPE.

FOUND 2" PIPE.

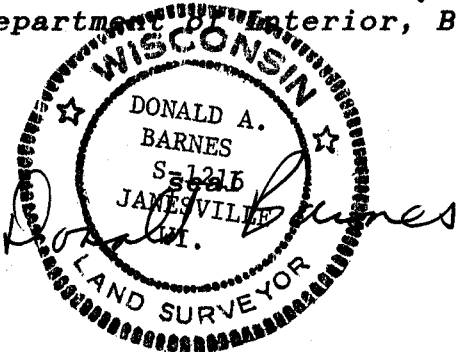
(C) Was the corner restored through acceptance of (1) an obliterated evidence location, or, (2) a found perpetuated location?

ACCEPTED FOUND PERPETUATED LOCATION.

D) Describe any material discrepancy between the location of the corner as restored or reestablished and the location of that corner as previously restored or reestablished by distance and direction. Show the discrepancy on the plan view drawing under (a), above. Show the distances between the corner as previously restored or reestablished and (1) the corner as restored or reestablished, and (2) to at least 4 of the witness monuments shown on the drawing in (a), above.

(E) Was the corner reestablished through lost corner proportionate methods? If so, show the method, including the directions and distances to other public land survey corners used as evidence or used for proportioning the corner location.

I, Donald Barnes, hereby certify that the corner points as identified by the corner code index were, in a field survey on, November 6, 1990, established, re-established, monumented, re-monumented, recovered or restored as expressed below and in conformance with the regulations and rules as required in the current manual of survey instructions of the United States Department of Interior, Bureau of Land Management.



AFFIX YOUR LAND SURVEYOR SEAL

COUNTY SURVEYOR FILING DATA

Date of computer entry _____

Date microfilmed _____

Number of included sheets _____
CORNER CODE

V 21